

Paper weight-110# (minimum)

Black nonfading ink required

# U.S. PUBLIC LAND SURVEY MONUMENT RECORD

For Public Land Survey Corners In:

WI ADMINISTRATIVE CODE A-E 7.08 REQUIREMENT

T. 4 N. R. 12 E. 4th P.M.

REV 10/23/2004

USMONREC.DWG

### CORNER CODE INDEX

1	2	3	4	5	6	7	8	9	10	11	12	13	14	15	16	17	18	19	20	21	22	23	24	25	
A																									A
B	6					5					4				3					2				1	B
C																									C
D																									D
E																									E
F	7					8					9				10					11				12	F
G																									G
H																									H
J																									J
K	18					17					16				15					14				13	K
L																									L
M																									M
N																									N
O	19					20					21				22					23				24	O
P																									P
Q																									Q
R																									R
S	30					29					28				27					26				25	S
T																									T
U																									U
V																									V
W																									W
X	31					32					33				34					35				36	X
Y																									Y
Z																									Z

FULTON TWP  
ROCK COUNTY WI

IF AVAILABLE  
ROCK COUNTY COORDINATES PREFERRED

North \_\_\_\_\_ Elev. \_\_\_\_\_

East \_\_\_\_\_

Hor. Datum \_\_\_\_\_ Vert. Datum \_\_\_\_\_

LATITUDE \_\_\_\_\_ ELLIPS. HT. \_\_\_\_\_

LONGITUDE \_\_\_\_\_

NAD83(91) \_\_\_\_\_ NETWORK ADJ. YR \_\_\_\_\_

GPS (X) \_\_\_\_\_ TRAVERSE (X) \_\_\_\_\_

BASED ON THE FOLLOWING CONTROL:

PLACE MONUMENT SYMBOL  AT PROPER LOCATION ON ABOVE INDEX

CORNER MONUMENT

WITNESS MONUMENT

BEARINGS ARE BASED ON:

FIELD BOOK \_\_\_\_\_ PAGE # \_\_\_\_\_

SHEET 1 OF 3

SHOW A PLAN VIEW DRAWING DEPICTING THE CORNER MONUMENT AND SURROUNDING PHYSICAL FEATURES, INCLUDING THE EXCAVATION AREA AND DEPTH.

PLANNING & ZONING COMMITTEE ADOPTED THIS FORM ON 12/2/1982

CORNER CODE A-13

FU507^

(B) Describe any record evidence, monument evidence, occupational evidence, testimonial evidence or any other material evidence you considered, and whether the monument was found or placed.

1833 (SEP21ST) MULLETT & BRINK EAST ON SOUTH SIDE SECTION 33  
T5N R12E

2640 SET QUARTER SECTION POST WHITE OAK 16 N16W  
31.02' WHITE OAK 10 N43E 52.8'  
3432 ENTER MARSH  
3630 STREAM 19.8' @ SOUTH  
3762 LEAVE MARSH  
5280 SET POST CORNER SECTIONS 33 & 34 WHITE OAK  
20 N77W 57.42' WHITE OAK 24 N45E 95.04' LAND  
ROLLING SECOND RATE THINLY TIMBERED WITH BUR  
WHITE AND BLACK OAK GOOD OBSERVATION AT THIS  
CORNER VAR 8-40

1833 (SEP21ST) MULLETT & BRINK EAST ON SOUTH SIDE SECTION 34  
T5N R12E

1368.18 WHITE OAK 12 IN DIAMETER  
2640 SET QUARTER SECTION POST WHITE OAK 14 N52W  
25.08' WHITE OAK 16 N71E 21.12'  
5280 SET POST CORNER SECTIONS 34 & 35 BUR OAK 14  
N41W 26.4' BUR OAK 16 N25E 35.64 LAND ROLLING  
SECOND RATE TIMBER WHITE BACK & BUR OAK

1834 (MAR/APR) HARRISON NORTH BET SECS 3 & 4

1554.3 RED O. 12  
2640 QUARTER SEC. CORNER {W.O. 10 S72E 52.8' RED O 12 S25W  
163.68' W.O. 10 RED O 12} MARKED  
4290 BROOK 9.9' E  
5305.74 INT. NORTH BDY 145.2' E OF P {BURR O 18 S48W 116.82'  
W.O. 12 S37E 98.34' LAND ?? SAME

1833 (OCT-NOV) MILLER NORTH BETWEEN SECTIONS 33 & 34 T5N R12E  
4<sup>TH</sup> MER.

1762.2 YEL. OAK 18 IN  
2640 SET 1/4 SEC POST B.B. O. 12 IN N7E 11.88', B.B.O. 16 IN  
S24-30W 42.24'  
2651.88 B. OAK 8 IN  
3869.58 YEL. OAK 5 IN ON EDGE OF IMPASSABLE MARSH.  
MARKED SAME- WIDTH OF MARSH OBT? BY  
TRIGONOMETRY 3931.62'  
5280 COR SEC 26,27,33,34 INACCEPABLE IN MARSH  
LAND LEVEL 2<sup>ND</sup> RATE B. YEL. OAK OAK & HAZLE  
UNDERGROWTH. RED ROOT B?? PRAIRIE & MARSH  
GRASS.

1873 GRAVES VOL 6 PG 349 DANE COUNTY SURVEYOR. 2649.24 FROM  
SE COR SEC 33 TO S 1/4 COR SEC 33. PLACED STONE @ S 1/16<sup>TH</sup>  
COR OF SE 1/4 OF SEC 33.

1881 LEE VOL 2 PG 324 BT STUMPS GONE TOOK LINE OF FENCE FROM S  
TO INDICATE COR IS ABOUT 145.2' FROM FENCES FOR DANCO.  
COR. EAST OF DANE COUNTY COR. 2584.89 TO N 1/4 COR SEC 3,

1884 RUGER VOL 2 PG 389 & 385 FD OLD STAKE & STUMP OF SE BT &  
WHERE S.W. BT HAD BEEN. DROVE NEW STAKE & SURROUNDED IT  
BY 3 HH STONES. 149.82' EAST OF SW COR SEC 34. @ SW COR  
SEC 34 FD WHERE BTs HAD BEEN & APPEARANCE OF STAKE.  
DROVE NEW STAKE SURROUNDED BY 4 HH. 2651.22 FROM SW COR  
SEC 34 TO S 1/4 COR SEC 34 & VAR 5-58 2652.87 FROM SW TO W 1/4  
COR SEC 34.

1911 HINTZE ALBION T5N R12E SET COR OF SEC 33 & 34 145.2' WEST  
OF ROCK COUNTY CORNER. AT FENCE COR. IRON STAKE (IS THE  
IRON STAKE THE NE COR SEC 4 OF WHAT HE PLACED AT THE SE  
COR SEC 33?) NB9-30E 2650.6 TO S 1/4 COR SEC 34, SB9-11W  
2675.3 TO S 1/4 COR SEC 33, NO-22W 2656.1 TO W 1/4 COR SEC 34.  
AT DANE COUNTY CORNERS, HINTZE INSTALLED CONCRETE  
MONUMENTS. THE DIFFERENCE IN BEARING OF LINES

SHEET 1 OF

CORNER CODE A-13

Dund Bates  
OCT 29, 2007

FU507

BETWEEN SECTION CORNERS GIVES THE TRUE DEVIATION FROM THE STRAIGHT LINE. SOME OF THE BEARINGS ARE MAGNETIC, CHECKED BY MEASUREMENTS, AND THE REST ARE TRANSIT LINES CHECKED BY OBSERVATIONS ON POLARIS. I HEREBY CERTIFY THAT THE DISTANCES AND BEARINGS ARE CORRECT ACCORDING TO SURVEY MADE UNDER THE PROVISIONS OF CHAPTER, 39 SECTION 825 OF THE REVISED STATUTES OF WISCONSIN AND IN ACCORDANCE WITH THE RULES ESTABLISHED BY THE UNITED STATES LAND OFFICE.

- 1956 ELY BK18 PG 32 SUB BEL-AIRE. STATES NOTHING ABOUT MON.  
1976 BARNES VOL 5 PG 229 FD HH 5X8X12 SURROUNDED BY 3 HH & 2 METAL STRAPS. SET ALUM. MON. FD CONC MON @ SW COR SEC 34. NW COR SEC 3 IS 145.XX EAST OF SW COR SEC 34. SW COR SEC 34 IS ON LINE WITH N/S FENCE TO THE NORTH & SOUTH.  
1978 SANDSNES VOL 5 PG 447 COORDINATES PROVIDE BY HIM. 310,247.91; 2,248,836.75  
1978 BARNES VOL 5 PG 434 145.20 COMPUTED EAST OF SE COR SEC 33. S89-03-52W 2721.08 TO N ¼ COR SEC 4, 2673.89 FROM SE COR SEC 33 TO S ¼ COR SEC 33.  
1981 AERO-METRIC PHOTO CONTROL NGVD 29 ELEVATION 888.21'. HIGHEST POINT ON STONE MON.  
1984 BARNES VOL 6 PG 326 COORDINATES FROM SANDSNES. 310,247.91; 2,248,836.75 & @ SW COR SEC 34 310,245.22; 2,248,691.57 S88-56-19W 145.21 TO SW COR SEC 34, S1-46-35E 2644.16 TO W ¼ COR SEC 3, N88-57-56E 2587.28 TO N ¼ COR SEC 3, FROM SW COR SEC 34 TO S ¼ COR SEC 34 N88-56-29E 2648.8X  
1999 KOFMEISTER #14455 FD ALUM MON. S01-08-44E 2644.09 TO ALUM. MON. @ E ¼ COR SEC 4. NOTE: BEARINGS FOR THIS SURVEY AND MAP ARE BASED ON GRID NORTH AS DETERMINED BY GPS METHODS IN 1999.  
2000 LATHROP #9785 ASSESSORS PLAT OF EDGERTON BK 20 PG 24 OL 30 & 31. FD ALUM. MON. 1178.92' WEST OF WEST R/W LINE OF BLAINE ST.  
2001 LATHROP #9942 OL 33 ALUM. MON

FD ALUM. AT NE COR SEC 4. PLACED CARSONITE POST ON NORTH SIDE OF E/W FENCE LINE. ALUM MON IS ON SOUTH SIDE OF FENCE. FD CONC. MON. WITH STEEL POST ON LINE WITH N/S FENCE LINE.

C) Was the corner restored through acceptance of (1) an obliterated evidence location, or, (2) a found perpetuated location?

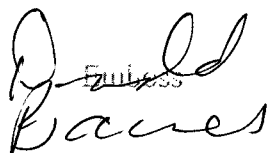
ACCEPTED FD CORNERS.

D) Describe any material discrepancy between the location of the corner as restored or reestablished and the location of that corner as previously restored or reestablished by distance and direction. Show the discrepancy on the plan view drawing under (a), above. Show the distances between the corner as previously restored or reestablished and (1) the corner as restored or reestablished, and (2) to at least 4 of the witness monuments shown on the drawing in (a), above.

NONE

I, Donald Barnes, hereby certify that the corner location as identified by the corner code index was determined by me under my direction and control and that this U.S. Public Land Survey Monument Record is correct and complete to the best of my knowledge and belief.

Seal

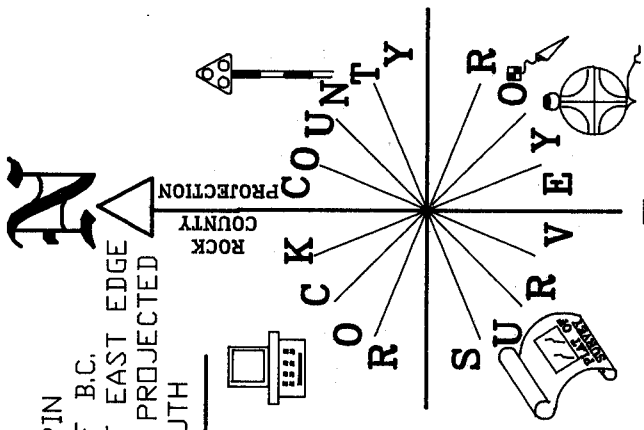
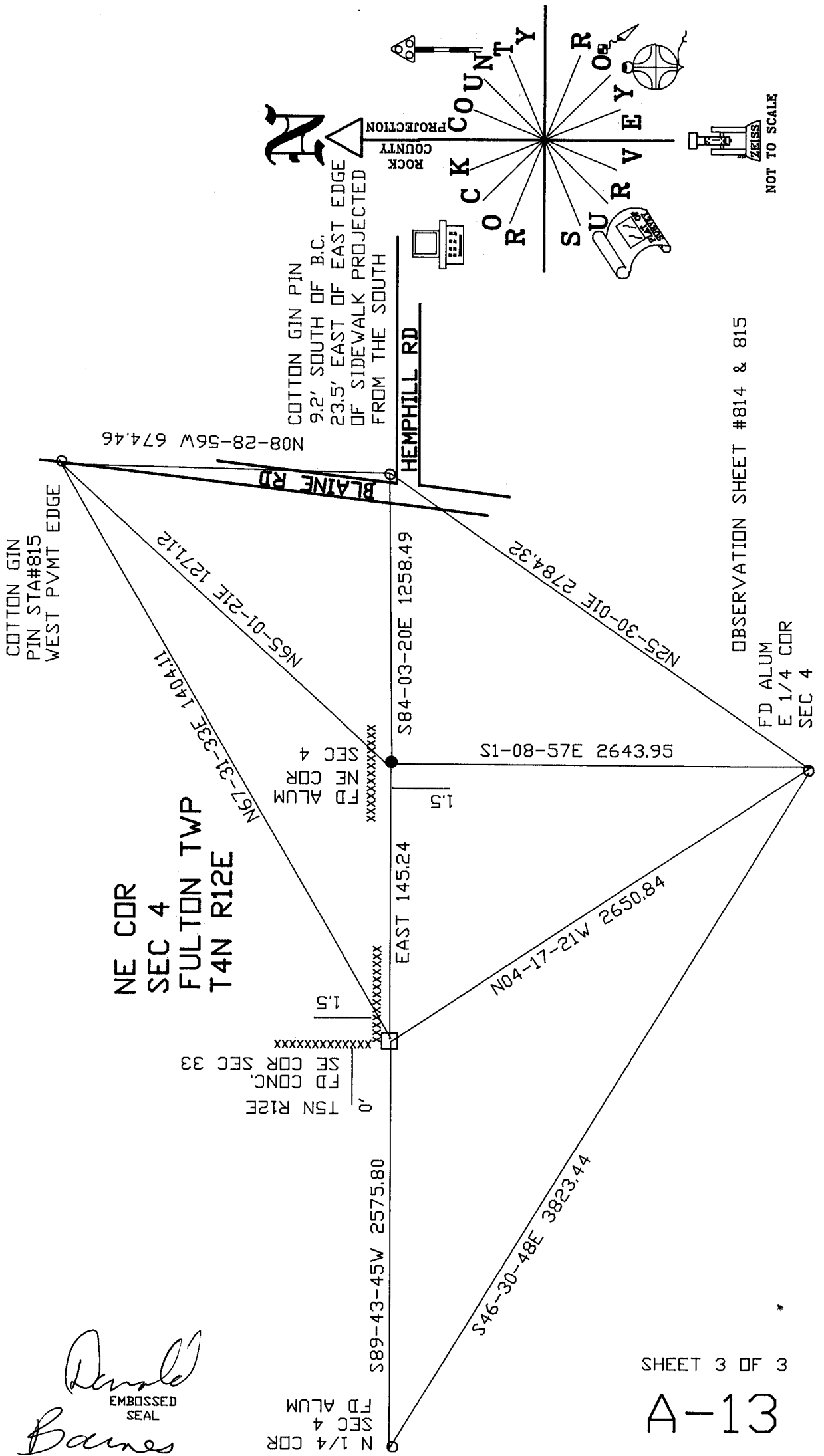
  
Donald Barnes

OCT 29, 2007

SHEET 2 OF 3

CORNER CODE **A-13**

A.E. 7.08 REQUIREMENT



NOT TO SCALE

*Donald Barnes*  
 EMBOSSED SEAL  
 OCT 29, 2007