

502 N 1/4 5

(B) Describe any record evidence, monument evidence, occupational evidence, testimonial evidence or any other material evidence you considered, and whether the monument was found or placed.

1833 ORIG. SURVEYOR DID NOT ESTABLISH CORNER. ORIG PLAT SHOWS AT THE N 1/4 COR SEC 6 A DISTANCE OF 2587.20 TO THE NW AND 2640 TO THE NE CORNERS OF SECTION 6, AT THE S 1/4 CORNER OF SEC 31 PORTER TWP. A DISTANCE OF 2587.20 TO THE SW AND 2640 TO THE SE CORNERS OF SEC 31 PORTER TWP. THE PLAT ALSO SHOWS A JOG OF 7.92 AT THE NE COR OF SEC 6. FROM THE NW CORNER OF SEC 6 WHICH IS ALSO THE SW CORNER OF SEC 31 THE DIFFERENCE OF 2587.20 & 2579.28 IS 7.92 WHICH REPRESENTS THE JOG AT THE N 1/4 COR OF SEC 6 ACCORDING TO THE ORIG PLAT.

1874 RUGER VOL 2 PG 165 CALLS FOR A VAR OF 7-25 (A STRAIGHT LINE) FROM THE SW COR OF SEC 31 TO THE S 1/4 COR OF SEC 32 PORTER TWP. CALLS FOR 2601.94 FROM THE S 1/4 COR SEC 31 TO THE SW COR SEC 31 & 2654.96 TO THE SE COR SEC 31.

1876 RUGER VOL 2 PG 219 DROVE STAKE. SET STAKE AT CENTER OF SECTION 6.

1900 BROWN VOL 2 PG 520 SET A STAKE AT THE N 1/4 COR OF SEC 6. HE USED THIS TO SUBDIVIDE SECTION 6. CALLS FOR 2614.92 TO THE NW COR AND 2642.64 TO THE NE CORNER OF SEC 6. SET STAKE & DRAG TOOTH SURROUNDED BY 4 WHITE BRICKS AT CENTER OF SEC 6. THE DISTANCE FROM THE CENTER OF SEC 6 TO THE E 1/4 COR OF SEC 6 INDICATES THAT HE PLACED THE N 1/4 CORNER CORRECTLY BUT PROBABLY COMPUTED THE DISTANCE BASED ON THE JOG AS BEING ON THE EAST SIDE INSTEAD OF THE WEST SIDE OF THE S 1/4 COR OF SEC 31.) CALLS FOR DISTANCES AROUND THE PERIMETER OF SECTION 6.

190? KERCH VOL 3 PG 15 SET GAS PIPE. CALLS FOR A NEW N/S ROAD. MAP SHOWS CORNER IN MIDDLE OF NEW ROAD. CALLS FOR 2596.1 TO NW COR AND 2657.2 TO NE CORNERS OF SEC 6. CALLS FOR 1329.1 FROM SE TO S 1/16 TH COR OF SE 1/4 OF SEC 31 PORTER TWP.

1976 BARNES VOL 5 PG 181 ACCEPTED FENCE AS MONUMENT AT THE S 1/16TH COR OF THE SE 1/4 OF SEC 31. SET S 1/4 COR OF SEC 31 ON LINE WITH SE COR OF SEC 31 AND THE FENCE AT THE S 1/16TH COR OF THE SE 1/4 COR SEC 31. AT DISTANCE OF 2659.4. REFERENCED SAME.

THE POSITION IS IN THE DRAINAGE DITCH. DID NOT PLACE A MONUMENT. ESTABLISHED CORNER PER ORIG PLAT DISTANCE JOG OF 7.92'. THIS IS IN HARMONY WITH KERCH'S DISTANCES AND BROWN'S DISTANCES IF ONE ASSUMES BROWN COMPUTED THE DISTANCES WITH THE JOG ON THE WRONG SIDE OF THE S 1/4 COR SEC 31.

C) Was the corner restored through acceptance of (1) an obliterated evidence location, or, (2) a found perpetuated location?

THE CORNER WAS RESTORED THROUGH ACCEPTANCE OF OBLITERATED EVIDENCE LOCATION.

I, Donald Barnes, hereby certify that the corner points as identified by the corner code index were, in a field survey on, March 30, 1995, established, re-established, monumented, re-monumented, recovered or restored as expressed below and in conformance with the regulations and rules as required in the current manual of survey instructions of the United States Department of Interior, Bureau of Land Management.

seal



COUNTY SURVEYOR FILING DATA

Date of computer entry _____

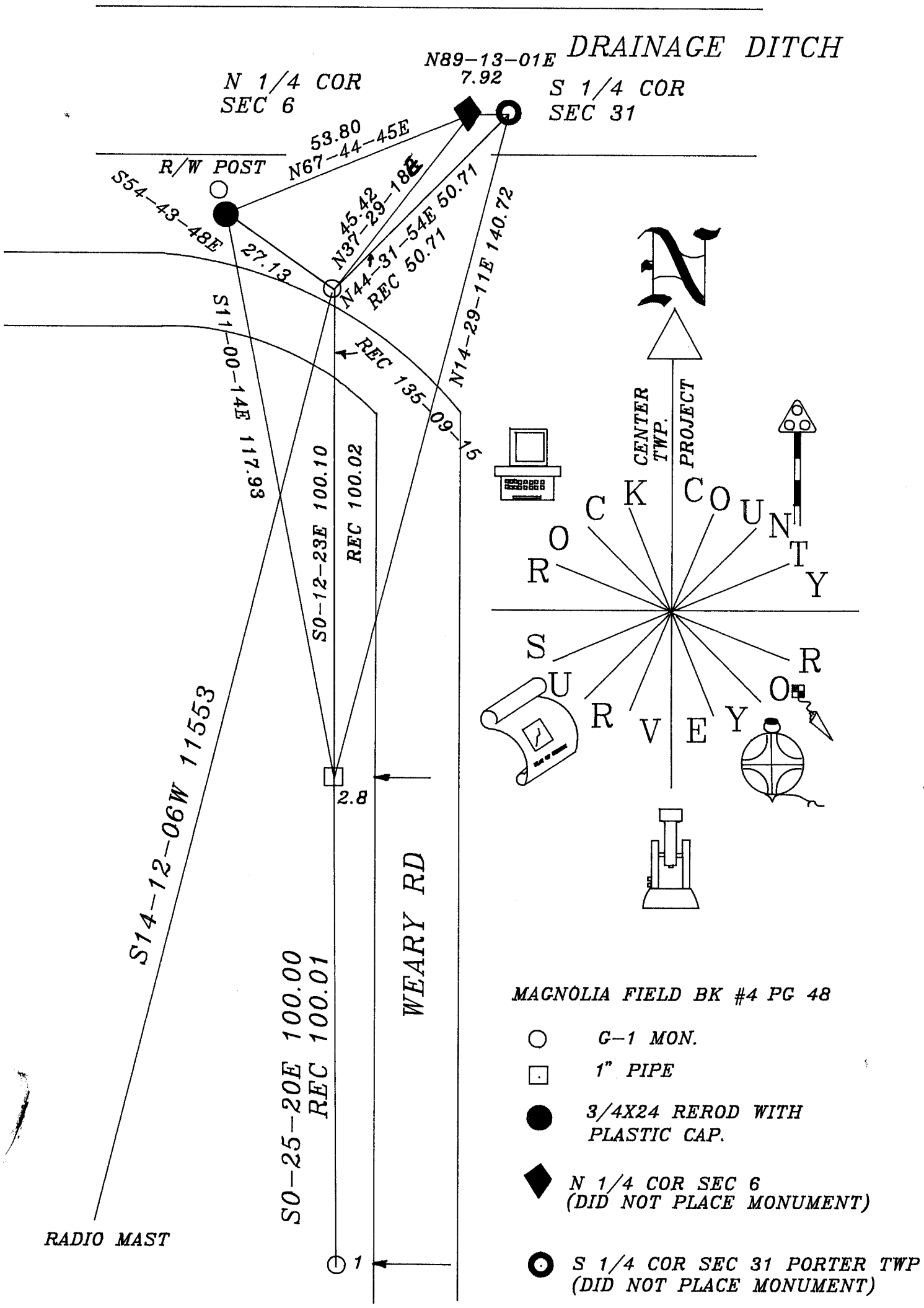
Date microfilmed _____

Number of included sheets _____

CORNER CODE

EMBOSS LAND SURVEYOR SEAL

A3



Donald Baer
3/30/95

SEC 31

NW COR

N89-13-01E 2604.99
ORIG (PLAT) 2587.2
BARNES 1994 2604.99
RUGER 1874 2548.92 VAR 7-25

N89-13-01E 2597.07
KERCH 2596.1
BROWN 1900 2614.92
ORIG (PLAT) 2587.20

SEC 6

N 1/4 COR

N89-13-01E 7.92
ORIG (PLAT 7.92)

S 1/4 COR

N89-15-43E 2659.00
KERCH 2657.2
BROWN 1900 2642.64

N89-15-59E 2658.59
ORIG 2640
KERCH 1329.1
1327.48 RUGER 1874 1327.48
1329.7 BARNES 1976 1329.7

NE COR

SE COR

KERCH 7.8
BARNES 1979 7.80
RUGER 1874 7.92
ORIG 7.92

Donald Barnes