



- (b.) Describe any record evidence, monument evidence, occupational evidence, testimonial evidence or any other material evidence you considered, and whether the monument was found or placed.
1. SEP 1, 1871 RUGER FOUND THE ORIG STAKE & STUMP OF SE BT & WHERE THE STUMP OF THE NW BT WAS DUG UP. (REMONUMENTATION FIELD NOTES-ORIGINAL PAPER COPIES ARE THE RH BATTERMAN OFFICE).
  2. 1895 BLEEDHORN USED THE CORNER TO SUBDIVIDE SECTION 31. COUNTY SURVEYOR'S RECORD OL 2-491.
  3. NO DATE FORMER COUNTY SURVEYOR DUG AND FOUND NOTHING. THIS IS SHOWN ON THE I-90 HIGHWAY PLANS. APPEARS THAT HE DUG FOR THE CORNER PRIOR TO CONSTRUCTION.
  4. 1973 HAROLD COMBS SHOWS THE NORTH LINE OF THE NE 1/4., CSM VOL 3 PAGE 45

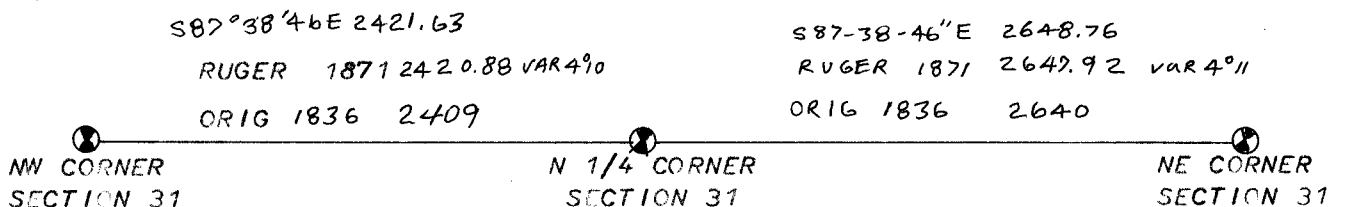
(c.) Was the corner restored through acceptance of (1) an obliterated evidence location, or, (2) a found perpetuated location?

NO

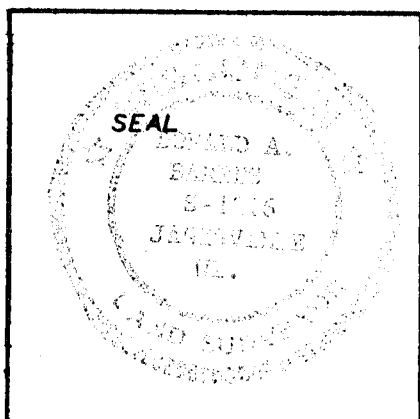
(d.) Describe any material discrepancy between the location of the corner as restored or reestablished and the location of that corner as previously restored or reestablished by distance and direction. Show the discrepancy on the plan view drawing under (a), above. Show the distances between the corner as previously restored or reestablished and (1) the corner as restored or reestablished, and (2) to at least 4 of the witness monuments shown on the drawing in (a), above.

(e.) Was the corner reestablished through lost corner proportionate methods? If so, show the method, including the directions and distances to other public land survey corners used as evidence or used for proportioning in determining the corner location.

YES



I, Donald Barnes, hereby certify that the corner points as identified by the corner code index were, in a field survey on Nov 21 1983, established, re-established, monumented, re-monumented, recovered or restored as expressed below and in conformance with the regulations and rules as required in the current manual of survey instructions of the United States Department of Interior, Bureau of Land Management.



COUNTY SURVEYOR FILING DATA

Date of Computer Entry \_\_\_\_\_  
 Date Received \_\_\_\_\_  
 Date Microfilmed \_\_\_\_\_  
 Treasurer's Receipt No. \_\_\_\_\_  
 Number of Included Sheets \_\_\_\_\_

AFFIX YOUR LAND SURVEYOR SEAL.

V3