

Paper weight-110# (minimum)

Black nonfading ink required

U.S. PUBLIC LAND SURVEY MONUMENT RECORD

For Public Land Survey Corners In:
T. 4 N. R. 13 E. 4th P.M.
CORNER CODE INDEX

WI ADMINISTRATIVE CODE A-E 7.08 REQUIREMENT
REV 10/23/2004 USMONREC.DWG

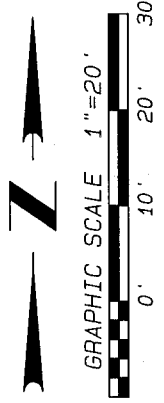
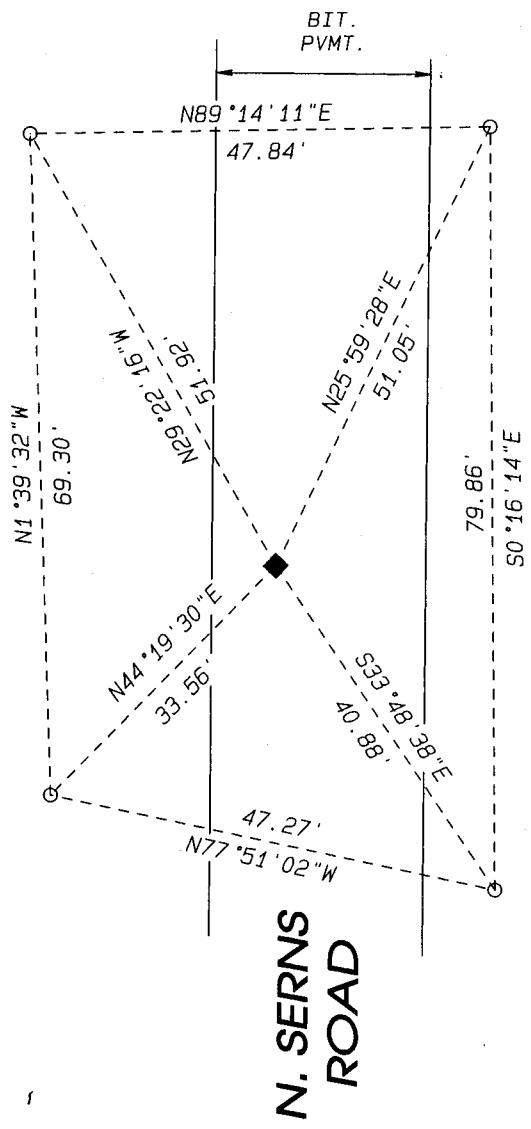
1	2	3	4	5	6	7	8	9	10	11	12	13	14	15	16	17	18	19	20	21	22	23	24	25	
A																									A
B																									B
C																									C
D																									D
E																									E
F																									F
G																									G
H																									H
J																									J
K																									K
L																									L
M																									M
N																									N
O																									O
P																									P
Q																									Q
R																									R
S																									S
T																									T
U																									U
V																									V
W																									W
X																									X
Y																									Y
Z																									Z

Milton TWP
ROCK COUNTY WI
IF AVAILABLE
ROCK COUNTY COORDINATES PREFERRED

North _____ Elev. _____
East _____
Hor. Datum _____ Vert. Datum _____
LATITUDE _____ ELLIPS. HT. _____
LONGITUDE _____
NAD83(91) _____ NETWORK ADJ. YR _____
GPS (X) _____ TRAVERSE (X) _____
BASED ON THE FOLLOWING CONTROL:

- ◆ CORNER MONUMENT
- WITNESS MONUMENT - Set 3/8" x 18" Iron Rebar

(a)
BEARINGS ARE BASED ON: Rock County Casso Datum
Assumed S0°20'42" W along the East Line
of NE 1/4 of Section 21-4-13.



FIELD BOOK _____ PAGE # _____ SHEET 1 OF 2

SHOW A PLAN VIEW DRAWING DEPICTING THE CORNER MONUMENT AND SURROUNDING PHYSICAL FEATURES, INCLUDING THE EXCAVATION AREA AND DEPTH.

PLANNING & ZONING COMMITTEE ADOPTED THIS FORM ON 12/2/1982

CORNER CODE P-13

(B) Describe any record evidence, monument evidence, occupational evidence, testimonial evidence or any other material evidence you considered, and whether the monument was found or placed.

Found PK Masonry Nail - Location checked
Rock County Coordinate

C) Was the corner restored through acceptance of (1) an obliterated evidence location, or, (2) a found perpetuated location?

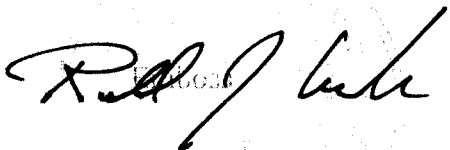
Found Perpetuated Location

D) Describe any material discrepancy between the location of the corner as restored or reestablished and the location of that corner as previously restored or reestablished by distance and direction. Show the discrepancy on the plan view drawing under (a), above. Show the distances between the corner as previously restored or reestablished and (1) the corner as restored or reestablished, and (2) to at least 4 of the witness monuments shown on the drawing in (a), above.

(E) Was the corner reestablished through lost corner proportionate methods? If so, show the method, including the directions and distances to other public land survey corners used as evidence or used for proportioning the corner location.

I, Ronald J. Cuthbert hereby certify that the corner location as identified by the corner code index was determined by me under my direction and control and that this U.S. Public Land Survey Monument Record is correct and complete to the best of my knowledge and belief.

Seal



Ronald J. Cuthbert

November 25, 2009

SHEET 2 OF 2

CORNER CODE

A.E. 7.08 REQUIREMENT

P-13