

U.S. PUBLIC LAND SURVEY MONUMENT RECORD

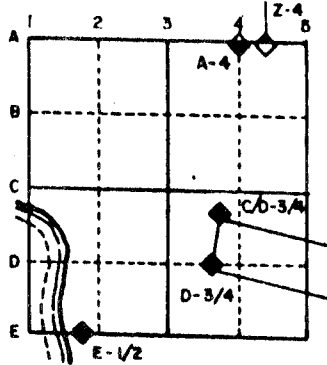
For Public Land Survey Corners in the
T. 4 N., R. 12 E.

CORNER CODE INDEX

| | | | | | | | | | | | | | | | | | | | | | | | | | |
|---|---|---|---|----|----|----|----|----|----|----|----|----|----|----|----|----|----|----|----|----|----|----|----|----|----|
| | 1 | 2 | 3 | 4 | 5 | 6 | 7 | 8 | 9 | 10 | 11 | 12 | 13 | 14 | 15 | 16 | 17 | 18 | 19 | 20 | 21 | 22 | 23 | 24 | 25 |
| A | | | | | | | | | | | | | | | | | | | | | | | | | |
| B | | | | | | | | | | | | | | | | | | | | | | | | | |
| C | 6 | | | | | | | | | | | | | | | | | | | | | | | | |
| D | | 5 | | | | | | | | | | | | | | | | | | | | | | | |
| E | | | 4 | | | | | | | | | | | | | | | | | | | | | | |
| F | | | | 3 | | | | | | | | | | | | | | | | | | | | | |
| G | | | | | 2 | | | | | | | | | | | | | | | | | | | | |
| H | | | | | | | | | | | | | | | | | | | | | | | | | |
| I | | | | | | | | | | | | | | | | | | | | | | | | | |
| J | | | | | | | | | | | | | | | | | | | | | | | | | |
| K | | | | | | | | | | | | | | | | | | | | | | | | | |
| L | 7 | | | | | | | | | | | | | | | | | | | | | | | | |
| M | | 8 | | | | | | | | | | | | | | | | | | | | | | | |
| N | | | 9 | | | | | | | | | | | | | | | | | | | | | | |
| O | | | | 10 | | | | | | | | | | | | | | | | | | | | | |
| P | | | | | 11 | | | | | | | | | | | | | | | | | | | | |
| Q | | | | | | 12 | | | | | | | | | | | | | | | | | | | |
| R | | | | | | | 13 | | | | | | | | | | | | | | | | | | |
| S | | | | | | | | 14 | | | | | | | | | | | | | | | | | |
| T | | | | | | | | | 15 | | | | | | | | | | | | | | | | |
| U | | | | | | | | | | 16 | | | | | | | | | | | | | | | |
| V | | | | | | | | | | | 17 | | | | | | | | | | | | | | |
| W | | | | | | | | | | | | 18 | | | | | | | | | | | | | |
| X | | | | | | | | | | | | | 19 | | | | | | | | | | | | |
| Y | | | | | | | | | | | | | | 20 | | | | | | | | | | | |
| Z | | | | | | | | | | | | | | | 21 | | | | | | | | | | |
| | | | | | | | | | | | | | | | | 22 | | | | | | | | | |
| | | | | | | | | | | | | | | | | | 23 | | | | | | | | |
| | | | | | | | | | | | | | | | | | | 24 | | | | | | | |
| | | | | | | | | | | | | | | | | | | | 25 | | | | | | |
| | | | | | | | | | | | | | | | | | | | | 26 | | | | | |
| | | | | | | | | | | | | | | | | | | | | | 27 | | | | |
| | | | | | | | | | | | | | | | | | | | | | | 28 | | | |
| | | | | | | | | | | | | | | | | | | | | | | | 29 | | |
| | | | | | | | | | | | | | | | | | | | | | | | | 30 | |
| | | | | | | | | | | | | | | | | | | | | | | | | | 31 |
| | | | | | | | | | | | | | | | | | | | | | | | | | 32 |
| | | | | | | | | | | | | | | | | | | | | | | | | | 33 |
| | | | | | | | | | | | | | | | | | | | | | | | | | 34 |
| | | | | | | | | | | | | | | | | | | | | | | | | | 35 |
| | | | | | | | | | | | | | | | | | | | | | | | | | 36 |

PLACE MONUMENT SYMBOL (◆) AT PROPER LOCATION ON ABOVE INDEX

EXAMPLE



FULTON TWP
ROCK COUNTY WI

IF AVAILABLE
STATE PLANE COORDINATES

North (Y) _____ Eleve. (Z) _____
East (X) _____ Zone _____
Hor. Datum _____ Vert. Datum _____

(a.)

◆ CORNER MONUMENT

○ WITNESS MONUMENT

BEARINGS ARE BASED ON:

FIELD BOOK _____ PAGE # _____

MICROFILMED

SHOW A PLAN VIEW DRAWING DEPICTING THE CORNER MONUMENT AND SURROUNDING PHYSICAL FEATURES, INCLUDING THE EXCAVATION AREA AND DEPTH. THE CORNER MONUMENT SHALL HAVE THE FOLLOWING CHARACTERISTICS: 1) HAVE AT LEAST TWO PREDETERMINED BREAK-OFF POINTS. 2) IF BROKEN, LEAVE A PERMANENTLY MAGNETIZED REMNANT AT THE ORIGINAL POINT. 3) MUST BE EXTENDABLE. 4) THE CAP IS INSCRIBED: ROCK COUNTY SURVEY MONUMENT - PENALTY FOR DISTURBING MARKER. 5) OR AN EXISTING CUT LIMESTONE. AN IRON PIPE 1 1/2" x 4'0" (MINIMUM) MAY BE USED IN AREAS WHERE GROUND WATER IS WITHIN ONE FOOT OF THE SURFACE. IF THE CORNER IS OCCUPIED BY AN IMPROVEMENT (MANHOLE, BURIED CABLE, ETC.) ANY DURABLE, DISTINCT MONUMENT MAY BE USED. CORNERS SHALL BE REFERENCED WITH AT LEAST 4 DURABLE WITNESS MONUMENTS. WITNESS MONUMENTS SHALL BE MADE OF CONCRETE, NATURAL STONE, IRON OR OTHER EQUALLY DURABLE MATERIAL, EXCEPT WOOD. DESCRIBE THE CORNER AND THE WITNESS MONUMENTS.

CORNER CODE:

N3

(B) Describe any record evidence, monument evidence, occupational evidence, testimonial evidence or any other material evidence you considered, and whether the monument was found or placed.

- 1833 HARRISON ORIGINAL SURVEYOR. BURR OAK 8 N9E 66' & RED OAK 8 N20W 126.72. CALLS FOR 2655.84 TO SW CORNER AND 2640 TO SE CORNER OF SECTION 18.
- 1875 RUGER VOL 2 PG 200 FOUND STUMP OF SE BT & WHERE STUMP OF NE BT HAD BEEN DUG UP. DID NOT ESTABLISH CORNER. CALLS FOR 2691.48 TO SW CORNER OF SECTION 18.
- 1880 LEE VOL 2 PG 315 CORNER LOST, BT GONE. DID NOT ESTABLISH IT.
- 1960 BATTERMAN JR. VOL 4 PG 13. FOUND PIECE OF WOOD STAKE. RESET WITH CONCRETE MONUMENT. CALLS FOR 2638.6 TO SE CORNER OF SECTION 18.
- 1966 BATTERMAN JR. VOL 4 PG 293 FOUND CONCRETE MONUMENT. SEE VOL 4 PG 13. CALLS FOR 2638.6 TO SE CORNER OF SECTION 18.
- 1970 BATTERMAN JR. VOL 4 PG 467 CALLS FOR CONCRETE MONUMENT. 1319.30 TO S 1/16TH CORNER OF SE 1/4 OF SECTION 18.

LAND OWNER SAID THAT HE FOUND THE MONUMENT LEANING AND STRAIGHTENED SAME. FOUND CONCRETE MONUMENT & PLACED CARSONITE POST ON EAST SIDE.

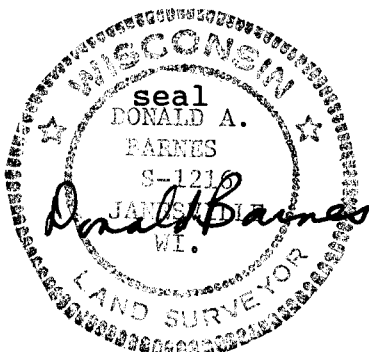
C) Was the corner restored through acceptance of (1) an obliterated evidence location, or, (2) a found perpetuated location?

ACCEPTED FOUND MONUMENT.

D) Describe any material discrepancy between the location of the corner as restored or reestablished and the location of that corner as previously restored or reestablished by distance and direction. Show the discrepancy on the plan view drawing under (a), above. Show the distances between the corner as previously restored or reestablished and (1) the corner as restored or reestablished, and (2) to at least 4 of the witness monuments shown on the drawing in (a), above.

(E) Was the corner reestablished through lost corner proportionate methods? If so, show the method, including the directions and distances to other public land survey corners used as evidence or used for proportioning the corner location.

I, Donald Barnes, hereby certify that the corner points as identified by the corner code index were, in a field survey on, September 16 1992, established, re-established, monumented, re-monumented, recovered or restored as expressed below and in conformance with the regulations and rules as required in the current manual of survey instructions of the United States Department of Interior, Bureau of Land Management.



AFFIX YOUR LAND SURVEYOR SEAL

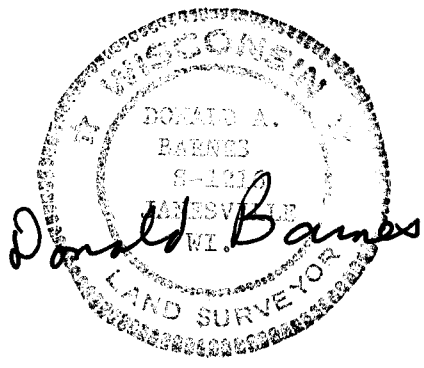
COUNTY SURVEYOR FILING DATA

Date of computer entry _____

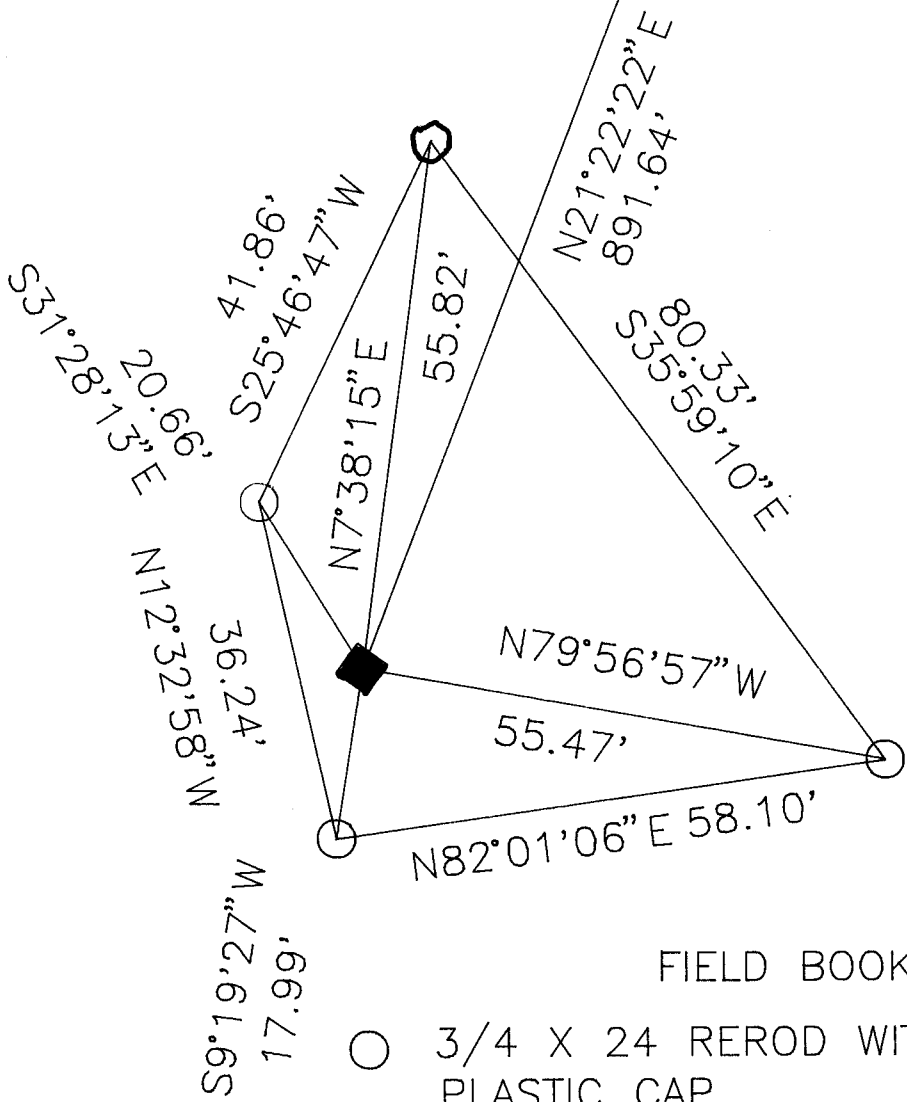
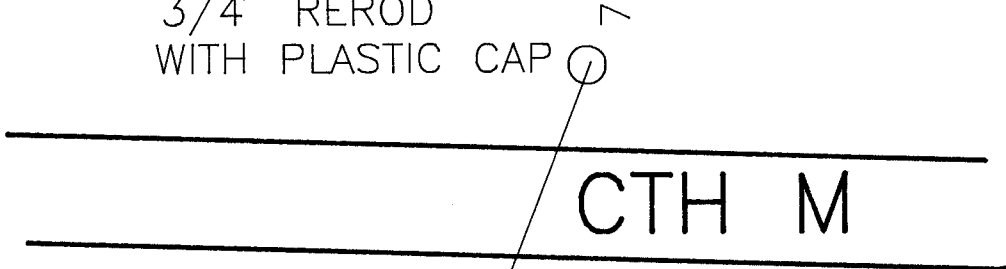
Date microfilmed _____

Number of included sheets **2**

CORNER CODE



XXXXXXXXXXXXXXXXXXXXXXXXXXXX
 3/4" REROD
 WITH PLASTIC CAP



FIELD BOOK "FULTON DAM" PG 10

- 3/4 X 24 REROD WITH PLASTIC CAP
- ◆ FOUND CONCRETE MONUMENT THAT IS ABOUT 2' ABOVE THE GROUND PLACED CARSONITE ON EAST SIDE