

Paper weight-110# (minimum)

Black nonfading ink required

U.S. PUBLIC LAND SURVEY MONUMENT RECORD

For Public Land Survey Corners In:

WI ADMINISTRATIVE CODE A-E 7.08 REQUIREMENT

T. AN. R. 12 E. 4th P.M.

REV 10/23/2004

USMONREC.DWG

CORNER CODE INDEX

FULTON TWP
ROCK COUNTY WI

IF AVAILABLE
ROCK COUNTY COORDINATES PREFERRED

A	1	2	3	4	5	6	7	8	9	10	11	12	13	14	15	16	17	18	19	20	21	22	23	24	25	A			
B		6				5									4											3	B		
C																											2	C	
D																												1	D
E																													E
F																													F
G																													G
H																													H
J																													J
K																													K
L																													L
M																													M
N																													N
O																													O
P																													P
Q																													Q
R																													R
S																													S
T																													T
U																													U
V																													V
W																													W
X																													X
Y																													Y
Z																													Z

North _____ Elev. _____

East _____

Hor. Datum _____ Vert. Datum _____

LATITUDE _____ ELLIPS. HT. _____

LONGITUDE _____

NAD83(91) _____ NETWORK ADJ. YR _____

GPS (X) _____ TRAVERSE (X) _____

BASED ON THE FOLLOWING CONTROL:

PLACE MONUMENT SYMBOL AT PROPER LOCATION ON ABOVE INDEX

CORNER MONUMENT

WITNESS MONUMENT

BEARINGS ARE BASED ON: _____

OBSERVATION SHEET 791

FIELD BOOK _____ PAGE # _____

SHEET 1 OF 2

SHOW A PLAN VIEW DRAWING DEPICTING THE CORNER MONUMENT AND SURROUNDING PHYSICAL FEATURES, INCLUDING THE EXCAVATION AREA AND DEPTH.

PLANNING & ZONING COMMITTEE ADOPTED THIS FORM ON 12/2/1982

CORNER CODE L-13

FU557^

(B) Describe any record evidence, monument evidence, occupational evidence, testimonial evidence or any other material evidence you considered, and whether the monument was found or placed.

1834 (MAR/APR) HARRISON NORTH BETWEEN SECS 15 & 16
4854.3 LEAVE ROCK RIVER & SET MEANDER POST ON RIGHT BANK OF SAME {BURR O 12 N73E 9.24' BURR O 10 N47W 55.44'
5085.3 TRAIL CRS E
5280 COR TO 9,10,15,16 {BURR O 18 N64W 73.26' BURR O 18 N69E 27.72' BURR O 10 S33E 93.72' BURR O 12 S40W 202.62' LAND ROLLING & BROKEN 2ND RATE WITH BURR O TIMBER ? GRASS & WEEDS
1836 (JULY/AUG) BURNHAM NORTH BETWEEN SECTIONS 15 & 16
1683 TRAIL NE & SW
4392.3 TO LEFT BANK OF ROCK RIVER
4946.7 INT RIGHT BANK 1.27' W OF M. POST FIRST RATE W & BUR OAK OPENINGS
SOUTH CORRECTION BETWEEN 15 & 16
543.84 SET MP ON LEFT BANK. YELLOW OAK 14 S21E 34.32' YELLOW OAK 12 S13 1/2 W 69.96' YELLOW OAK 14 IN DI
2306.7 SET 1/4 SEC POST BURR OAK 10 N85 1/2E 22.44' BUR O 12 S70W 41.58'

I SEARCHED AND FOUND NOTHING. THERE IS NO TREE OR FENCE LINE WITHIN A 600' RADIUS OF CORNER. I PLACED AN ORANGE POLY. WITH TOP ABOUT 14" BELOW GRADE. I PLACED 2 MAGNETS ABOUT 4" ABOVE MON. BASE AND 2 MAGNETS AT THE MID POINT OF THE MONUMENT.

C) Was the corner restored through acceptance of (1) an obliterated evidence location, or, (2) a found perpetuated location?

NO

D) Describe any material discrepancy between the location of the corner as restored or reestablished and the location of that corner as previously restored or reestablished by distance and direction. Show the discrepancy on the plan view drawing under (a), above. Show the distances between the corner as previously restored or reestablished and (1) the corner as restored or reestablished, and (2) to at least 4 of the witness monuments shown on the drawing in (a), above.

THE SW COR OF SEC 15 WAS ESTABLISHED BY BURNHAM IN AUGUST OF 1836. HOW WAS HARRISON ABLE TO GO NORTH ON THE WEST LINE OF SEC 15 IN 1834? HE DOES NOT CALL FOR THE SW COR OF SEC 15. HOWEVER, HE NEEDED IT TO RUN HIS LINE.

(E) Was the corner reestablished through lost corner proportionate methods? If so, show the method, including the directions and distances to other public land survey corners used as evidence or used for proportioning the corner location.

YES. I PLACED THE MONUMENT ON LINE WITH THE SE & NE CORNERS OF SEC 16 AT SINGLE PORPORTIONATE DISTANCE. THE DISTANCE FROM THE E 1/4 COR OF SEC 16 TO THE NE & SE CORNERS IS 2698.14. THE 1836 BURNHAM DISTANCE IS 2640 TO THOSE CORNERS.

I, Donald Barnes, hereby certify that the corner location as identified by the corner code index was determined by me under my direction and control and that this U.S. Public Land Survey Monument Record is correct and complete to the best of my knowledge and belief.

Seal

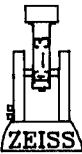
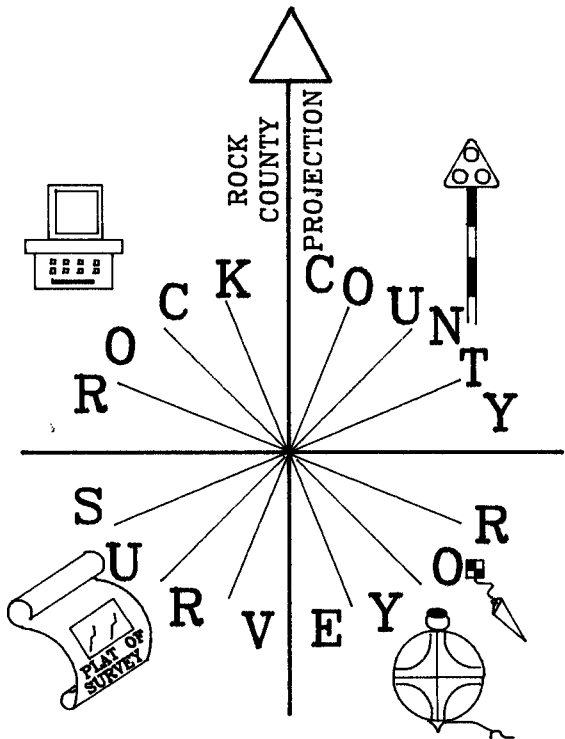
Donald Barnes
Emboss

SHEET 1 OF 2

APRIL 22, 2008

CORNER CODE **L-13**

A.E. 7.08 REQUIREMENT

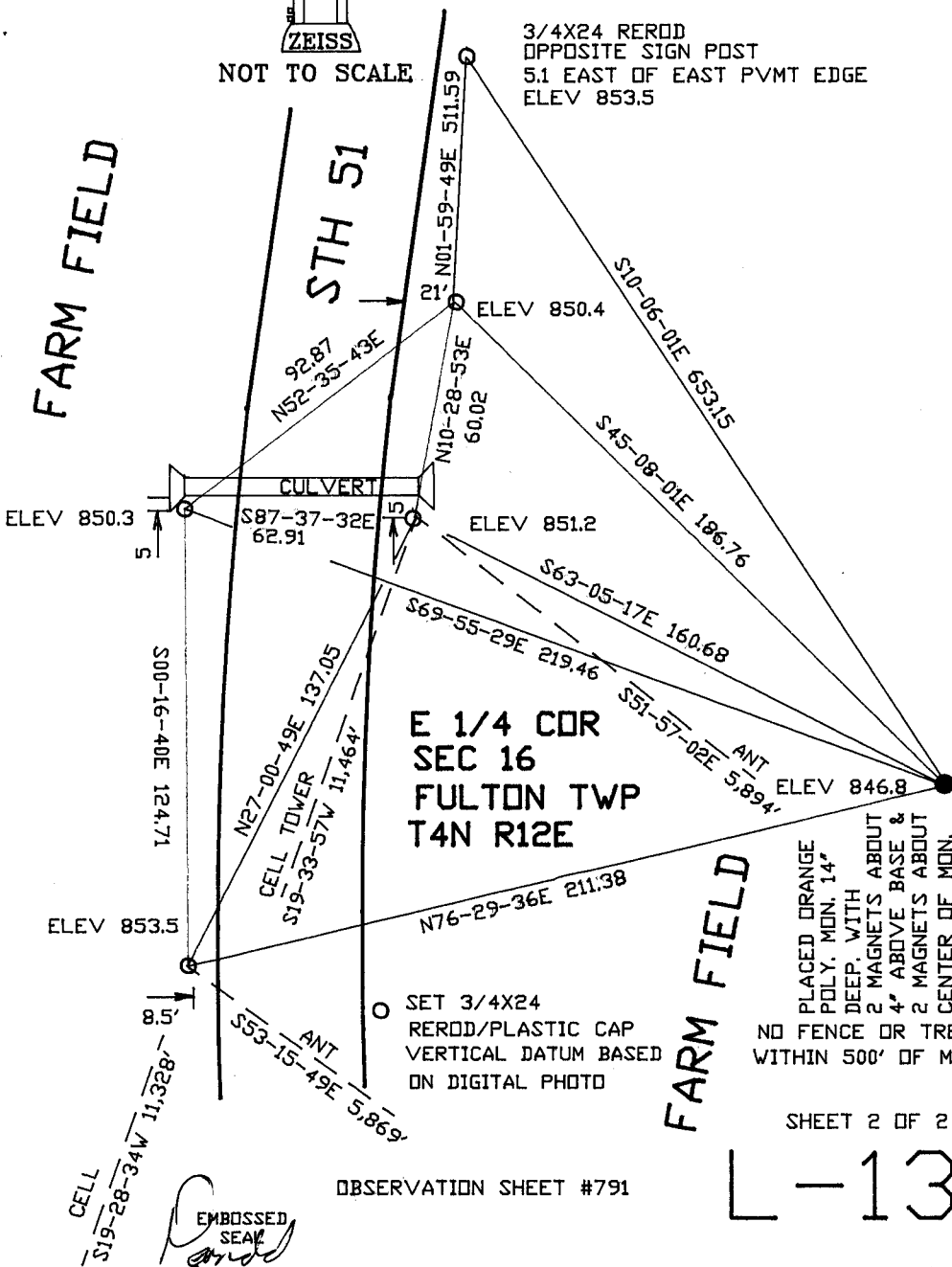


NOT TO SCALE

3/4X24 REROD
OPPOSITE SIGN POST
5.1 EAST OF EAST PVMT EDGE
ELEV 853.5

FARM FIELD

STH 51



PLACED ORANGE
POLY. MON. 14"
DEEP. WITH
2 MAGNETS ABOUT
4" ABOVE BASE &
2 MAGNETS ABOUT
CENTER OF MON.
NO FENCE OR TREES
WITHIN 500' OF MON.

FARM FIELD

SHEET 2 OF 2

L-13

OBSERVATION SHEET #791

EMBOSSED
SEAL
James

APRIL 22, 2008