

U.S. PUBLIC LAND SURVEY MONUMENT RECORD

For Public Land Survey Corners In:
T. 4 N. R. 12 E. 4th P.M.

WI ADMINISTRATIVE CODE A-E 7.08 REQUIREMENT

REV 10/23/2004

USMONREC.DWG

CORNER CODE INDEX

A	1	2	3	4	5	6	7	8	9	10	11	12	13	14	15	16	17	18	19	20	21	22	23	24	25	A	
B																										B	
C	6						5											4								C	
D																											D
E																											E
F																											F
G																											G
H																											H
J																											J
K																											K
L																											L
M																											M
N																											N
O																											O
P																											P
Q																											Q
R																											R
S																											S
T																											T
U																											U
V																											V
W																											W
X																											X
Y																											Y
Z																											Z

FULTON TWP

ROCK COUNTY WI

IF AVAILABLE
ROCK COUNTY COORDINATES PREFERRED

North _____ Elev. _____

East _____

Hor. Datum _____ Vert. Datum _____

LATITUDE _____ ELLIPS. HT. _____

LONGITUDE _____

NAD83(91) _____ NETWORK ADJ. YR _____

GPS (X) _____ TRAVERSE (X) _____

BASED ON THE FOLLOWING CONTROL:

PLACE MONUMENT SYMBOL AT PROPER LOCATION ON ABOVE INDEX

CORNER MONUMENT

WITNESS MONUMENT

BEARINGS ARE BASED ON: _____

FIELD BOOK _____ PAGE # _____

SHEET 1 OF 2

SHOW A PLAN VIEW DRAWING DEPICTING THE CORNER MONUMENT AND SURROUNDING PHYSICAL FEATURES, INCLUDING THE EXCAVATION AREA AND DEPTH.

PLANNING & ZONING COMMITTEE ADOPTED THIS FORM ON 12/2/1982

CORNER CODE 5-3

FU542

(B) Describe any record evidence, monument evidence, occupational evidence, testimonial evidence or any other material evidence you considered, and whether the monument was found or placed.

- 1834 (APR) HARRISON WEST ON A RANDOM BET 7 & 18
1320 LEAVE PRAIRIE
2640 TEMPY 1/4 SEC COR.
3884.1 TRAIL NW TO FOUR LAKES
5338.74 WEST BOUNDARY 19.14' N OF P LAND ROLLING 2ND
RATE WITH BUR OAK TIMBER FOR LAST 3/4 OF MILE
1ST 1/4 LEVEL 2ND RATE PRAIRIE
COR EAST BET 7 & 18
2698.74 QUARTER SEC COR {BURR O 10 N76W 213.18'
BURR O 10 S10E 83.92' BURR O 10 BURR O
10}MARKED
5338.74 INT. SEC COR
1871 RUGER VOL 2 PG 79 & 1069 FD OLD STAKE & NW BT &
STUMP OF SE BT SET NEW STAKE DEEP & PUT ON TOP OF
IT LIMESTONE 14X9X5 POINT UP & SURROUNDED IT WITH
3 HH & 1 L.S. VAR 7-28 TO N 1/4 COR SEC 7.
1876 RUGER #1069 FD OLD STAKE & NW BT & STUMP OF SE BT SET
NEW STAKE DEEP & PUT ON TOP OF IT LIMESTONE 14X9X5
POINT UP & SURROUNDED IT WITH 3 HH & 1 L.S. VAR 7-28
TO N 1/4 COR SEC 7
1937 SUNNY VOL 3 PG 359 FD L.S. MON. SET 1 1/2X30"
CAPPED PIPE ON TOP & REF. SAME. IN PVMT
1959 ? VOL 3 PG 359 INKED IN 8/19/59 IRON PIN 31.52
NORTH OF COR.
1966 BATTERMAN VOL 4 PG 256 DUG & FD CAPPED 1 1/2" PIPE
2.5' N OF LINE BETWEEN THE SE & SW COR OF SEC 7.
REF. SAME. EAST OF CONC. CULVERT.
1971 LEE CSM VOL 2 PG 95 STATES NOTHING ABOUT MON.
1972 SCHROEDER CSM VOL 3 PG 10 STATES NOTHING ABOUT
MON.
1973 LEE #1286 FD PIN 2646.05 TO NE COR SEC 18
1975 WPL #1287 299,346.72; 2,235,782.59 N88-34-22E
2645.82 TO NE COR SEC 18
1978 BARNES #1275 SHOWS RECORD DISTANCES.
1979 SCHROEDER CSM VOL 8 PG 362 10 STATES NOTHING
ABOUT MON. SW COR OF LOT 1 IS 35.00' NORTH OF S 1/4
COR SEC 7
1982 BARNES VOL 6 PG 261 FD PK. TIED INTO FROM AERO-
METRIC ENG. PHOTO. CONTROL. 299,347.08;
2,235,782.36
1987 BARNES VOL 6 PG 373 FD CAPPED PIPE
1992 NORTHROP CSM VOL 15 PG 475 ANGLE 89-50-36 @ N 1/4
COR SEC 7 FROM S 1/4 COR SEC 7 TO NW COR SEC 7
2000 NORTHROP CSM VOL 24 PG 45&87 ALUM. MON. 5325.47
TO N 1/4 COR SEC 7 & ANGLE 89-50-36 @ N 1/4 COR SEC 7
FROM S 1/4 COR SEC 7 TO NW COR SEC 7

FD 0.6' DEEP CAPPED PIPE. PUT MAGNETS NEXT TO PIPE. MON IS
1' NORTH OF CENTER OF PVMT. FD MAG. NAIL 2.02' NORTH & MAG.
NAIL 2.00' EAST.

C) Was the corner restored through acceptance of (1) an obliterated evidence location, or, (2) a found perpetuated location?

ACCEPTED PERPETUATED LOCATION.

I, **Donald Barnes**, hereby certify that the corner location as identified by the corner code index was determined by me under my direction and control and that this U.S. Public Land Survey Monument Record is correct and complete to the best of my knowledge and belief.

Seal

Donald Barnes

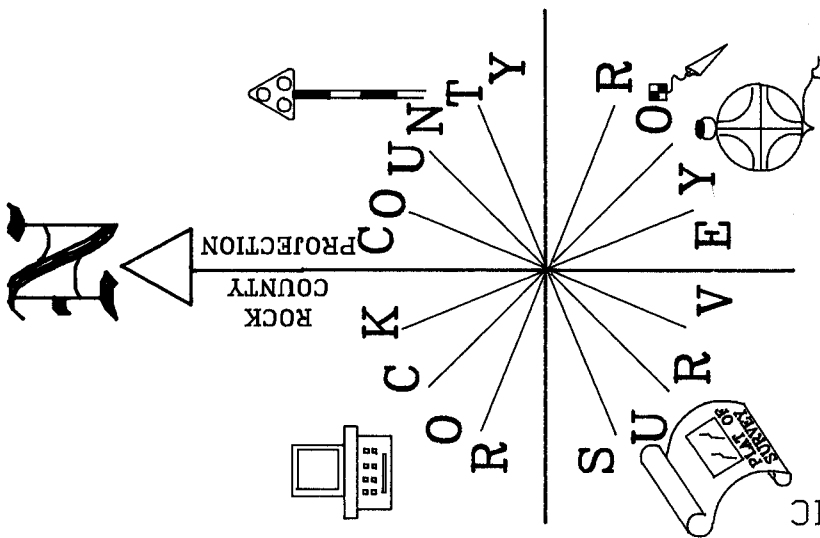
Emboss

SHEET 1 OF 2

CORNER CODE **J-3**

May 17, 2006

A.E. 7.08 REQUIREMENT

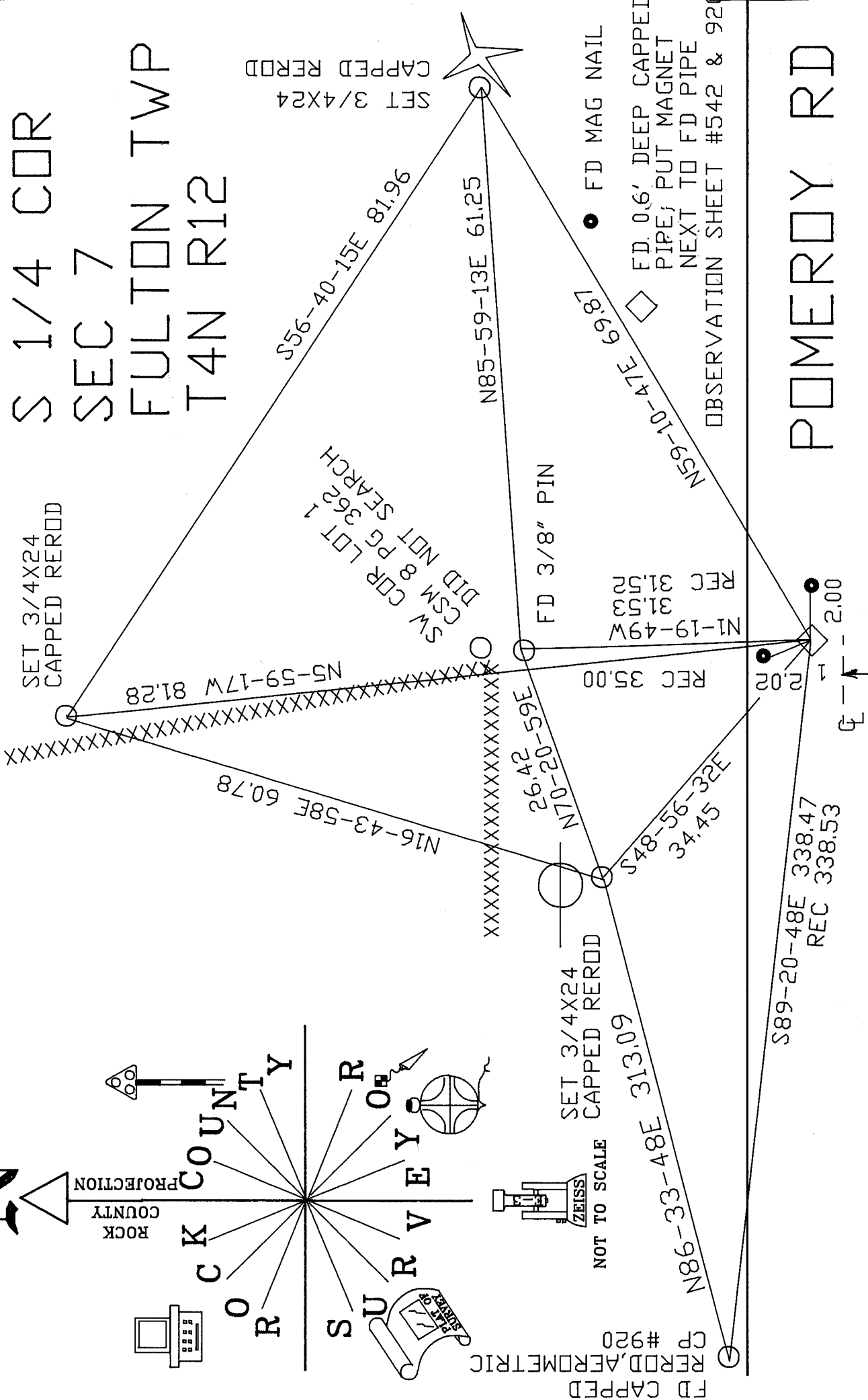


S 1/4 COR
 SEC 7
 FULTON TWP
 T4N R12

SET 3/4X24
 CAPPED REROD

SET 3/4X24
 CAPPED REROD

SW COR LOT 1
 CSM 8 PG 362
 DID NOT SEARCH



POMEROY RD

SHEET 2 OF 2

EMBOSSSED
 SEAL

May 17 2006
 Donald Barnes

