

Paper weight-110# (minimum)

Black nonfading ink required

U.S. PUBLIC LAND SURVEY MONUMENT RECORD

For Public Land Survey Corners In:

WI ADMINISTRATIVE CODE A-E 7.08 REQUIREMENT

T. 4 N. R. 12 E. 4th P.M.

REV 10/23/2004

USMONREC.DWG

CORNER CODE INDEX

| | | | | | | | | | | | | | | | | | | | | | | | | | |
|---|----|---|---|---|---|---|---|---|----|----|----|----|----|----|----|----|----|----|----|----|----|----|----|----|---|
| 1 | 2 | 3 | 4 | 5 | 6 | 7 | 8 | 9 | 10 | 11 | 12 | 13 | 14 | 15 | 16 | 17 | 18 | 19 | 20 | 21 | 22 | 23 | 24 | 25 | |
| A | | | | | | | | | | | | | | | | | | | | | | | | | A |
| B | | | | | | | | | | | | | | | | | | | | | | | | | B |
| C | 6 | | | | | | | | | | | | | | | | | | | | | | | | C |
| D | | | | | | | | | | | | | | | | | | | | | | | | | D |
| E | | | | | | | | | | | | | | | | | | | | | | | | | E |
| F | | | | | | | | | | | | | | | | | | | | | | | | | F |
| G | 7 | | | | | | | | | | | | | | | | | | | | | | | | G |
| H | | | | | | | | | | | | | | | | | | | | | | | | | H |
| J | | | | | | | | | | | | | | | | | | | | | | | | | J |
| K | | | | | | | | | | | | | | | | | | | | | | | | | K |
| L | 18 | | | | | | | | | | | | | | | | | | | | | | | | L |
| M | | | | | | | | | | | | | | | | | | | | | | | | | M |
| N | | | | | | | | | | | | | | | | | | | | | | | | | N |
| O | | | | | | | | | | | | | | | | | | | | | | | | | O |
| P | 19 | | | | | | | | | | | | | | | | | | | | | | | | P |
| Q | | | | | | | | | | | | | | | | | | | | | | | | | Q |
| R | | | | | | | | | | | | | | | | | | | | | | | | | R |
| S | | | | | | | | | | | | | | | | | | | | | | | | | S |
| T | 30 | | | | | | | | | | | | | | | | | | | | | | | | T |
| U | | | | | | | | | | | | | | | | | | | | | | | | | U |
| V | | | | | | | | | | | | | | | | | | | | | | | | | V |
| W | | | | | | | | | | | | | | | | | | | | | | | | | W |
| X | 31 | | | | | | | | | | | | | | | | | | | | | | | | X |
| Y | | | | | | | | | | | | | | | | | | | | | | | | | Y |
| Z | | | | | | | | | | | | | | | | | | | | | | | | | Z |

FULTON TWP
ROCK COUNTY WI

IF AVAILABLE
ROCK COUNTY COORDINATES PREFERRED

North _____ Elev. _____

East _____

Hor. Datum _____ Vert. Datum _____

LATITUDE _____ ELLIPS. HT. _____

LONGITUDE _____

NAD83(91) _____ NETWORK ADJ. YR _____

GPS (X) _____ TRAVERSE (X) _____

BASED ON THE FOLLOWING CONTROL:

PLACE MONUMENT SYMBOL AT PROPER LOCATION ON ABOVE INDEX

CORNER MONUMENT

WITNESS MONUMENT

BEARINGS ARE BASED ON: (a) _____

FIELD BOOK _____ PAGE # _____

SHEET 1 OF 4

SHOW A PLAN VIEW DRAWING DEPICTING THE CORNER MONUMENT AND SURROUNDING PHYSICAL FEATURES, INCLUDING THE EXCAVATION AREA AND DEPTH.

PLANNING & ZONING COMMITTEE ADOPTED THIS FORM ON 12/2/1982

CORNER CODE J-13

FU547^

(B) Describe any record evidence, monument evidence, occupational evidence, testimonial evidence or any other material evidence you considered, and whether the monument was found or placed.

- 1834 (MAR/APR) HARRISON EAST ON RAND BET SECS 9 & 16
2640 TEMPY 1/4 SEC COR
5305.08 INT. E BDY 26.4' N OF P LAND & ? SAME
COR WEST
2652.54 QUARTER SEC COR {W.O. 12 S52E 3.96' W.O. 10
N65W 5.28' W.O. 12 W.O 10} MARKED
5305.08 INT. SEC COR
- 1834 HARRISON ORIG. SURVEYOR.
NORTH BETWEEN SECS 9 & 10
377.52 RED OAK 12
2640 TO A HICKORY 10 INCHES IN DIAMETER IN WHICH
ESTABLISHED QUARTER SEC COR.
3498 TRAIL CRS N.E.
3664.98 RED OAK 8
3994.98 TRAIL NE & ROAD
5016 TRAIL N.E.
5280 COR TO SECS 3, 4, 9, 10
- 1834 (MAR/APR) HARRISON EAST BETWEEN SECS 10 & 15 ON
RANDOM
2112 BROOK 13.2' CRS SOUTH
2640 TEMPY 1/4 SEC COR
5273.4 INT E BDY AT P LAND ROLLING 2ND RATE TIMBER &
SAME AS BEFORE
COR WEST
2636.7 QUARTER SEC COR. {RED O 12 S38W 56.1' RED O
12 N1E 67.98' RED O 12 RED O 12}
5273.4 INT SEC COR.
- 1834 (MAR/APR) HARRISON NORTH BETWEEN SECS 15 & 16
4854.3 LEAVE ROCK RIVER & SET MEANDER POST ON RIGHT
BANK OF SAME {BURR O 12 N73E 9.24' BURR O 10
N47W 55.44'
5085.3 TRAIL CRS E
5280 COR TO 9,10,15,16 {BURR O 18 N64W 73.26'
BURR O 18 N69E 27.72' BURR O 10 S33E 93.72'
BURR O 12 S40W 202.62' LAND ROLLING &
BROKEN 2ND RATE WITH BURR O TIMBER ? GRASS &
WEEDS
- 1836 (JULY/AUG) BURNHAM NORTH BETWEEN SECTIONS 15 & 16
1683 TRAIL NE & SW
4392.3 TO LEFT BANK OF ROCK RIVER
4946.7 INT RIGHT BANK 1.27' W OF M. POST FIRST RATE W &
BUR OAK OPENINGS
SOUTH CORRECTION BETWEEN 15 & 16
543.84 SET MP ON LEFT BANK. YELLOW OAK 14 S21E
34.32' YELLOW OAK 12 S13 1/2 W 69.96' YELLOW
OAK 14 IN DI
2306.7 SET 1/4 SEC POST BURR OAK 10 N85 1/2E 22.44'
BUR O 12 S70W 41.58'
- 1848 PIERCE TWP RD BK 1 PG 11 THIS DAY SURVEYED A RD BY
DIRECTION OF THE COMMISSIONERS OF HIGHWAYS,
BEGINNING AT A STAKE ON THE SEC. LINE OF 9 & 16 IN
T4 OF RANGE 12 AND IN THE RD RUNNING NORTH &
SOUTH BEING W. OF THE 1/4 SECTION POST [N 1/4 COR SEC
16] 1361.58 NOW FROM SAID STAKE RUN ON SECTION
LINE N81-15E 2079'; THENCE S58E 528'; THENCE N60E
462'; THENCE N86-15E 660'; N58E 613.8' TO SECTION
LINE OF 15 & 10 THEN ON SECTION LINE N81-15E
1564.2; THENCE S62E 297'; THENCE N73-15E 1036.2'

SHEET 1/4 OF 4
CORNER CODE J-13

Donald J. Barnes
Nov 7 2007

FU547

- TO THE SEC LINE; THENCE N81-15E SECTION LINE
2329.8' TO SEC CORNER; THENCE N49E 2277';
N18W 825'; THENCE N38W 363'; THENCE N7E 1395.9',
N65-15E R, 2310'? THEN N73E 660'; THENCE N42-30E
759'; THENCE N63E 775.5'; THENCE S73E 1155' N83E
1645.38; THENCE N56E 301.62'; THENCE N73E 601.26'
TO THE 1/4 LINE OF SEC 12 & HIGHWAY ON NORTH BANK
OF ROCK RIVER. MAKING 21,077.76'
- 1859 RUGER VOL 1 PG 123 STATES NOTHING ABOUT COR.
425.7 NORTH OF MP. VAR 8-35 TO N 1/4 COR SEC 15
- 1871 RUGER VOL 2 PG 53 & #1234 FD OLD STAKE & NW
BEARING TREE & STUMP OF NE BEARING TREE, THE FORMER
SHOULD READ N60W 71.28' & THE LATTER N39E 27.72', VAR
7-31 2627.62 TO N 1/4 COR SEC 15, VAR 6-18 449.96 TO MP
- 1872 LEE VOL 2 PG 89 FD NW BT & STUMP OF NE BT & OLD
STAKE. VAR 8-30 2648.58 TO S 1/4 COR SEC 9, VAR 8-25
2653.2 TO E 1/4 COR SEC 9, 412.5 TO MP
- 1891 BLEEDORN VOL 2 PG 436 #1092 FD STUMPS OF BTS &
REMAINS OF OLD STAKE. SET HH 13X12X5 SURROUNDED
BY 4 HH. 2670.36 TO E 1/4 COR SEC 9
- 1934 ELY #1235 IRON STAKE DRIVEN. N85-01E 394 TO
IRON STAKE FD
- 1937 SUNNY #6635 FD IRON ROD. PLACED A 2X30" IRON PIPE
OVER IT. 1316.3 TO A LS AS DESCRIBED & SET BY RUGER
IN 1871 AT THE N 1/16TH COR OF THE NW 1/4 OF SEC 15.
AT THE 1/16TH COR IT WAS REPLACED WITH 2X30" IP &
SURROUNDED IT WITH STONES. FD PIPE 494.0 EAST OF COR.
- 1937 SUNNY VOL 3 PG 337 FD IRON ROD SET 2X36" PIPE.
SHOWS DISTANCES TO MON ON NORTH LINE OF GOV. LOT
4 OF SEC 15
- 1951 ELY #1110 IRON STAKE FOUND IN CENTER OF R/W
- 1955 ELY #1096 CALLS FOR COR BUT STATES NOTHING ABOUT
IT
- 1954 ELY #1235 STATES NOTHING ABOUT MON.
- 1956 ELY "RIVER VISTA" BK 18 PG 29 STATES NOTHING ABOUT
MON.
- 1960 DOT STH 51 #6722 STATES NOTHING ABOUT MON.
SHOWS NEAR EAST R/W
- 1967 WEIR "FIRST ADDITION TO RIVER VISTA" BK 23 PG 22.
STATES NOTHING ABOUT MON. CALLS FOR MAGNETIC
NORTH 4-33 WEST OF TRUE NORTH.
- 1976 BARNES VOL 5 PG 227 FD 2 1/2" IP SURROUNDED BY 3/4"
IRON PIN. REF SAME. 113' EAST OF CENTER OF STH 51
PVMT. NEAR HISTORIC SITE.
- 1978 SANDSNES VOL 5 PG 447 299,637.64; 2,249,092.08
- 1978 SANDSNES #1117 & #6573 AIR PHOTO CONTROL FOR
EDGERTON
- 1981 BARNES VOL 6 PG 104 299,637.64; 2,249,092.09
SANDSNES N89-32-02E 2632.55 TO N 1/4 COR SEC 15.
- 1982 COMBS #1144 FD IRON PIPE 2632.24 TO S 1/4 COR SEC
10. FD PIPE @ S 1/16TH COR OF SW 1/4 SEC 10. 1316.12 FROM
1/16TH COR TO S 1/4 & SW CORNERS OF SEC 10
- 1983 SCHROEDER #5303 CALLS FOR COR BUT STATES
NOTHING ABOUT MON.
- 1989 NORTHROP #171 2" I.D. PIPE. SOUTH 164.66 TO PIPE
ON NORTH SIDE OF GRAVEL DR.
- 1989 NORTHROP #12234 & 00175 2" I.D. PIPE. 1" I.D. PIPE
164.66 SOUTH OF 2" PIPE
- 1993 KREBS #9829 FD IRON PIPE 2664.66 TO E 1/4 COR SEC 9
- 1997 NORTHROP #8451 FD 2" PIPE
- 2004 COMBS CSM VOL 28 PG 71 IRON PIPE. 2664.48 TO FD DOT
DISK @ W 1/4 COR SEC 10

SHEET 2 OF 4
CORNER CODE J-13

Nov 7, 2007
Russ Barnes

FU547

2004 COMBS #14904 FD PIPE 2664.48 TO DOT DISK @ W 1/4 COR
SEC 10, 2631.44 TO FD PIN @ S 1/4 COR SEC 10, & ANGLE 90-
39-57 FROM W 1/4 COR SEC 10 TO S 1/4 COR SEC 10
2005 FAVORITE #??? FD 2" PIPE. NO1-06-04E 2664.62 TO ALUM
MON @ E 1/4 COR SEC 9
2005 J. SCHROEDER CSM VOL 29 PG 27 2" IRON PIPE. 2664.48 TO
ALUM @ W 1/4 COR SEC 10
2005 J. SCHROEDER BK32-684 FD 2" IRON PIPE. 2664.48 TO
ALUM @ W 1/4 COR SEC 10
2006 NORTHROP #???? FD 2" PIPE, 2639.95 TO STONE MON @ N 1/4
COR SEC 16; 112.95 EAST OF USH 51

FD PIN IN 2 1/2-3" PIPE WITH CARSONITE POST.

C) Was the corner restored through acceptance of (1) an obliterated evidence location, or, (2) a found perpetuated location?

ACCEPTED FD PIPE.

D) Describe any material discrepancy between the location of the corner as restored or reestablished and the location of that corner as previously restored or reestablished by distance and direction. Show the discrepancy on the plan view drawing under (a), above. Show the distances between the corner as previously restored or reestablished and (1) the corner as restored or reestablished, and (2) to at least 4 of the witness monuments shown on the drawing in (a), above.

(E) Was the corner reestablished through lost corner proportionate methods? If so, show the method, including the directions and distances to other public land survey corners used as evidence or used for proportioning the corner location.

I, **Donald Barnes**, hereby certify that the corner location as identified by the corner code index was determined by me under my direction and control and that this U.S. Public Land Survey Monument Record is correct and complete to the best of my knowledge and belief.

Seal
Donald Barnes

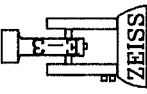
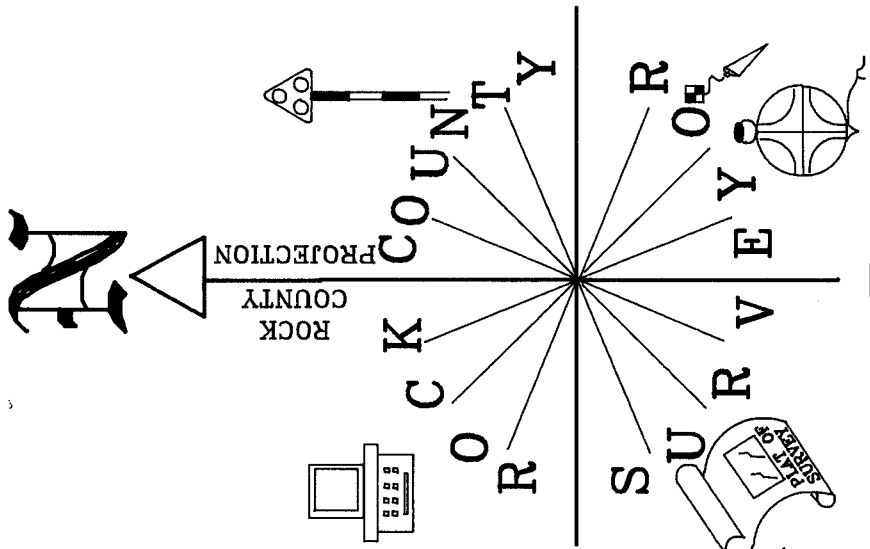
SHEET 3 OF 4

Emboss

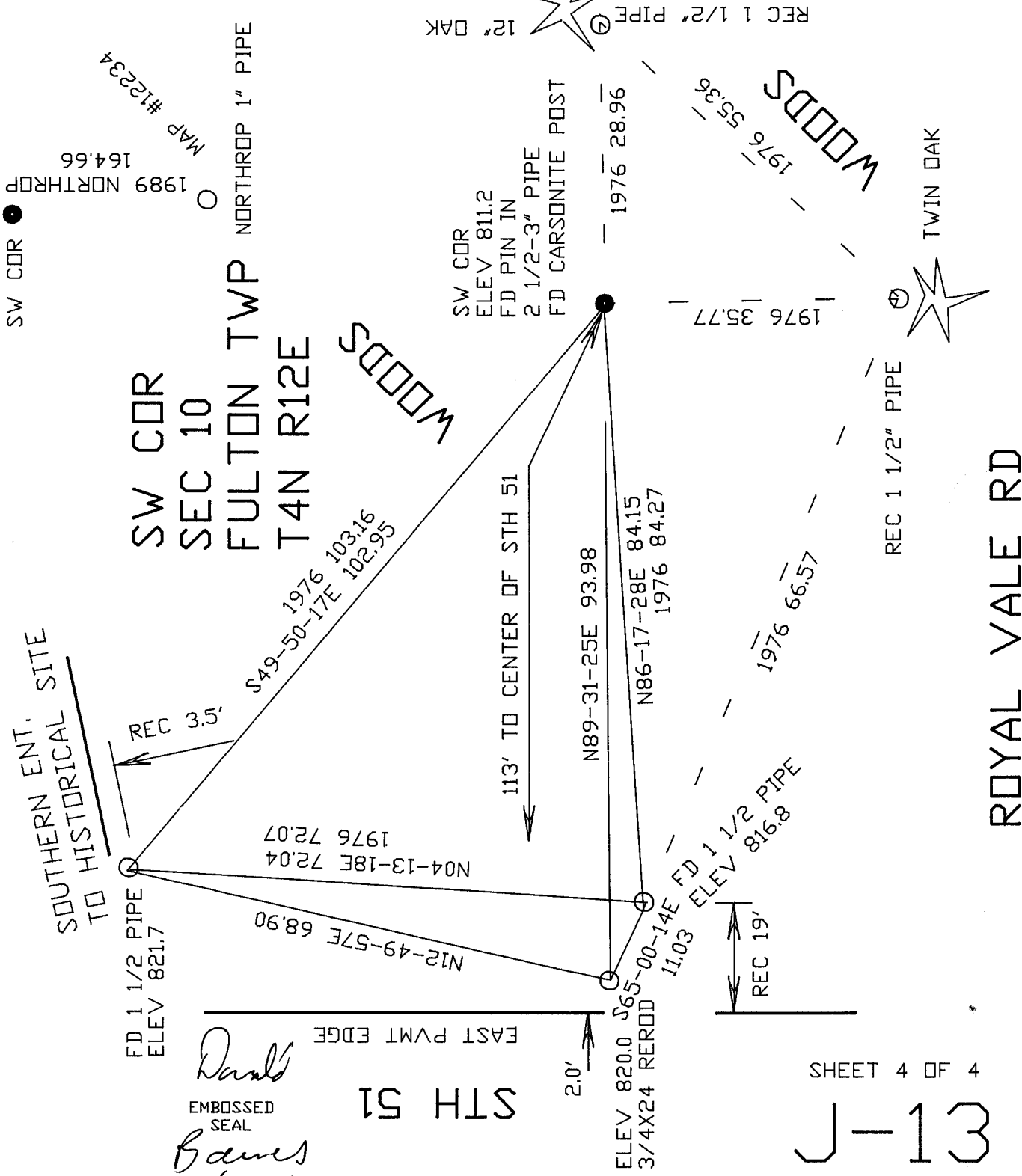
11/07/2007

CORNER CODE **J-13**

A.E. 7.08 REQUIREMENT



NOT TO SCALE
OBSERVATION SHEET #801
VERTICAL DATUM BASED
ON DIGITAL PHOTO



SW COR ●
1989 NORTHROP 164.66
MAP #12234

SW COR
SEC 10
FULTON TWP
T4N R12E

WOODS

WOODS

TWIN OAK

ROYAL VALE RD

SOUTHERN ENT.
TO HISTORICAL SITE

Daryl
EMBOSSED SEAL
Bames
11/07/07

STH 51

2.0'

ELEV 820.0
3/4X24 REROD
11.03
N86-17-28E 84.15
1976 84.27

SHEET 4 OF 4

J-13