

PLAT AND RECORD

Of a Survey on Section 3 T 2 R 13 E. of the 4 P. M. in La Prairie Township

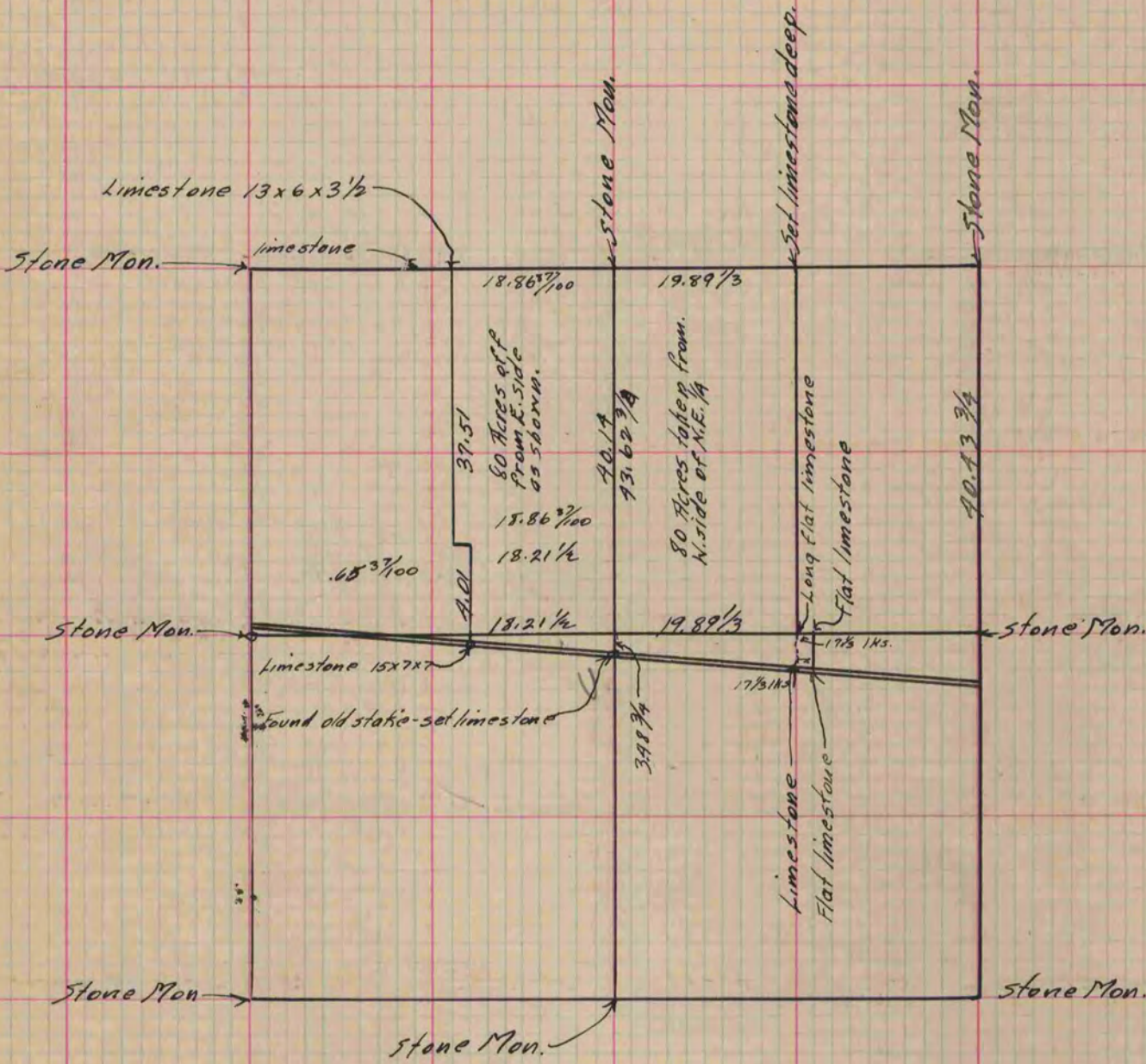
Rock County, Wisconsin, made September the 29 1871
June 25 1883

I hereby certify that the following is a correct record of said survey as made by me.

COUNTY BUILDING
IN CITY OF BELOIT

(Signed) Edward Roger.
RMB

County Surveyor.



Copied from Page 43 Vol. 2 Original County Surveyors Record.