

PLAT AND RECORD

Of a Survey on Section 1 T 3 R 12 E. of the 4 P. M. in Janesville Township

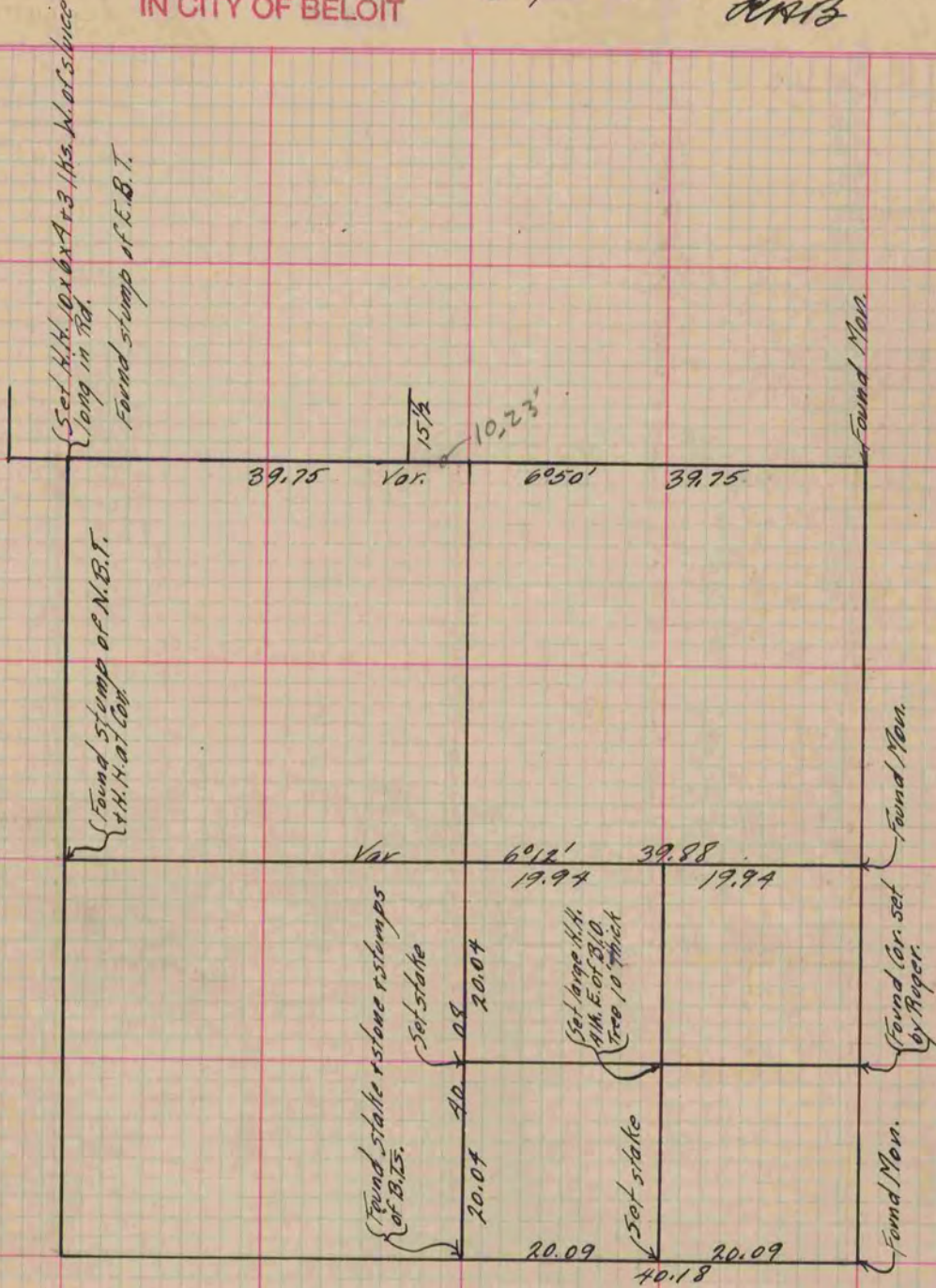
Rock County, Wisconsin, made June the 18th 1872

I hereby certify that the following is a correct record of said survey as made by me.

COUNTY BUILDING
IN CITY OF BELOIT

(Signed) R.H. Lee
RHL

{Deputy
County Surveyor.



Copied from Page 56 Vol. 2 Original County Surveyor's Record.