

# PLAT AND RECORD

Of a Survey on Section 20 T 1 R 10 E. of the 4 P. M. in Avon Township

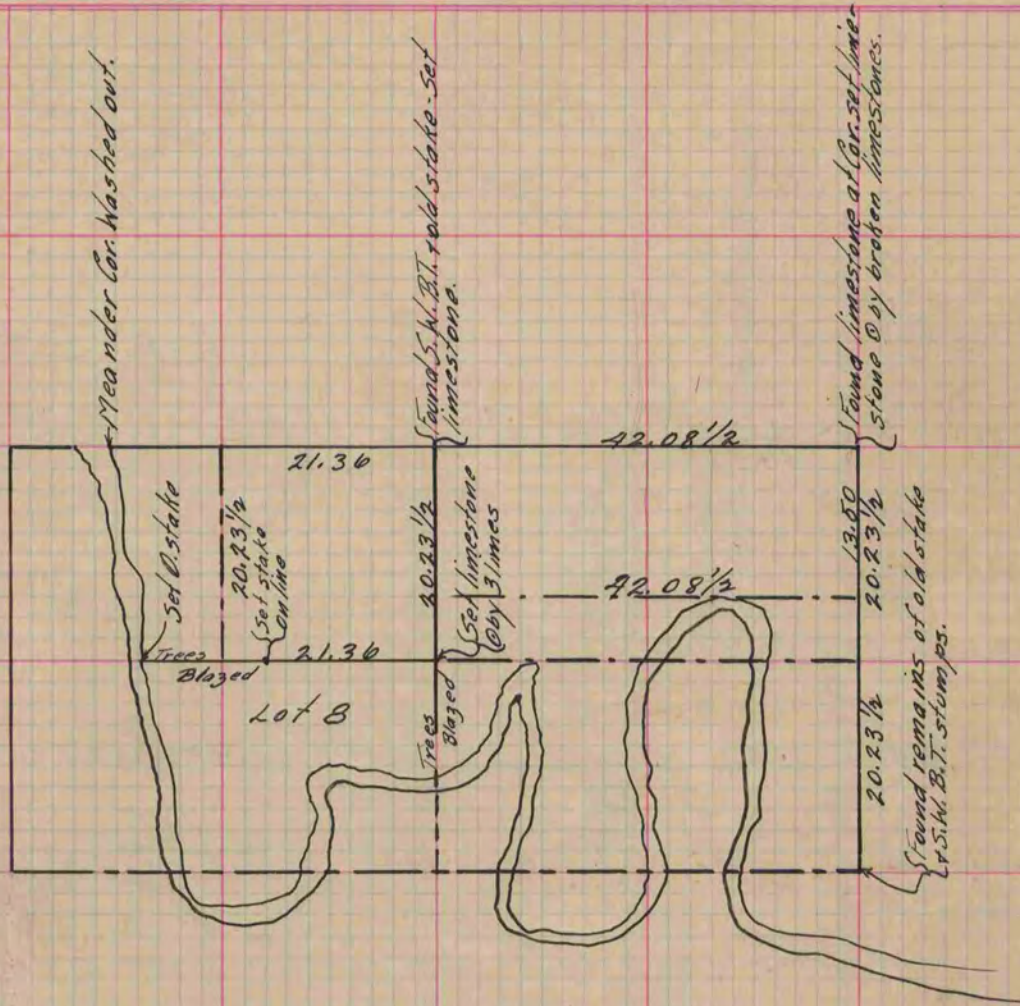
Rock County, Wisconsin, made May the 19<sup>th</sup> & 20<sup>th</sup> 1873

I hereby certify that the following is a correct record of said survey as made by me.

COUNTY BUILDING  
IN CITY OF БЕЛОIT

(Signed) R. K. Lee  
RKL

{Deputy  
County Surveyor.



Copied from Page 59 Vol. 2 Original County Surveyor's Record.