

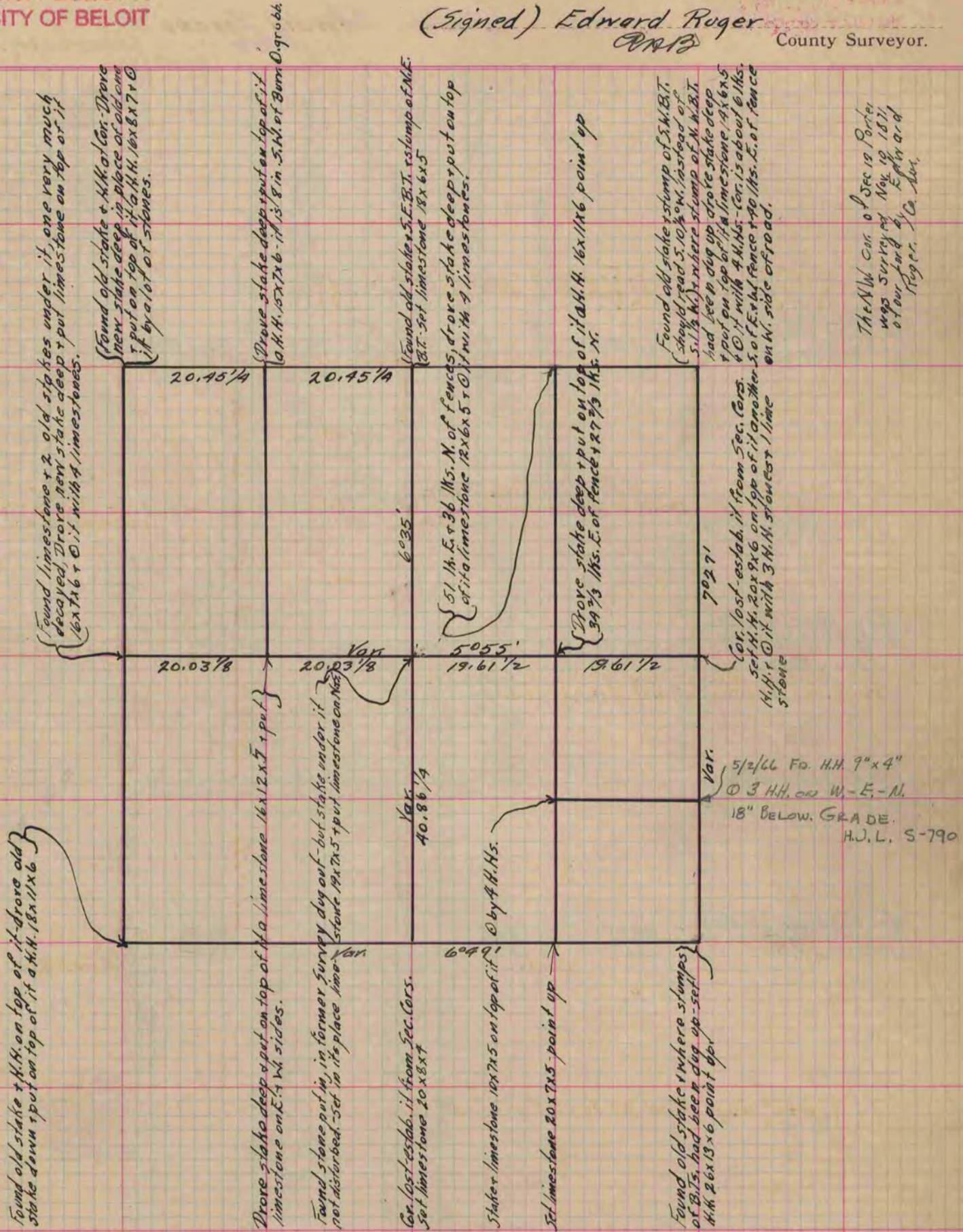
PLAT AND RECORD

Of a Survey on Section 12 T 4 R 11 E. of the 4 P. M. in Porter Township
 Rock County, Wisconsin, made May the 15+16 1871

I hereby certify that the following is a correct record of said survey as made by me.

COUNTY BUILDING
 IN CITY OF BELoit

(Signed) Edward Ruger
 County Surveyor.



Copied from Page 39 Vol. 2. Original County Surveyor's Record.