

PLAT AND RECORD

88

Of a Survey on Section 26 T 3 R 12 E. of the 4 P. M. in Janesville Township

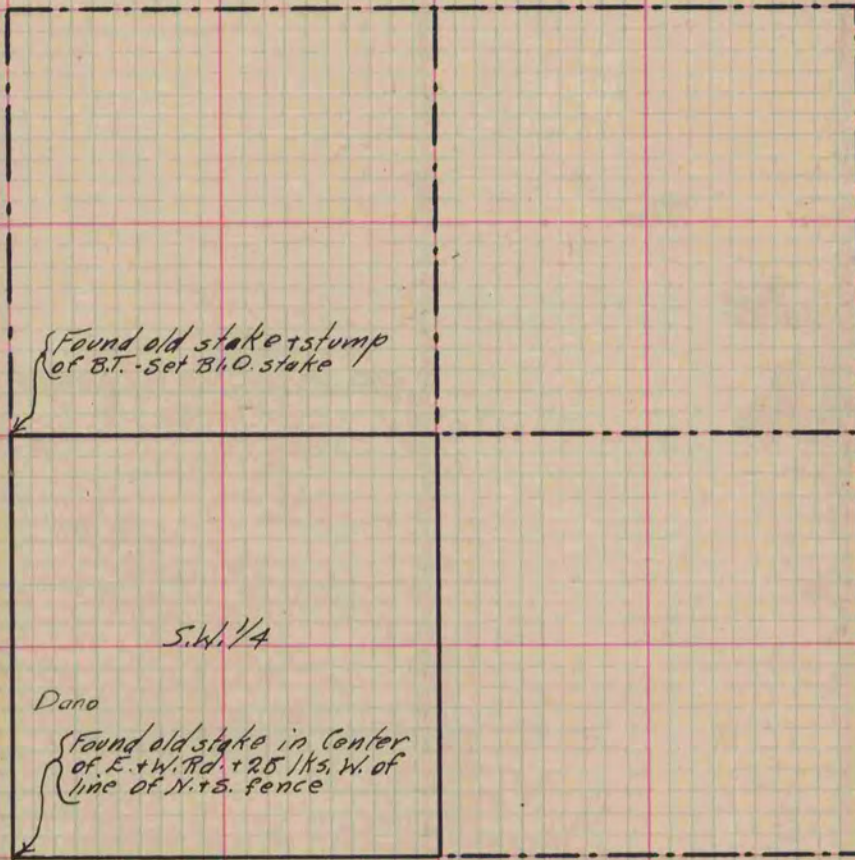
Rock County, Wisconsin, made May the 12 1872

I hereby certify that the following is a correct record of said survey as made by me.

COUNTY BUILDING
IN CITY OF BELOIT

(Signed) R. K. Lee
RKL

Deputy
County Surveyor.



Copied from lower 1/2 of Page 50 Vol. 2 Original County Surveyor's Record