

# PLAT AND RECORD

Of a Survey on Section 6+7 T 2 R 13 E. of the 4 P. M. in La Prairie Township

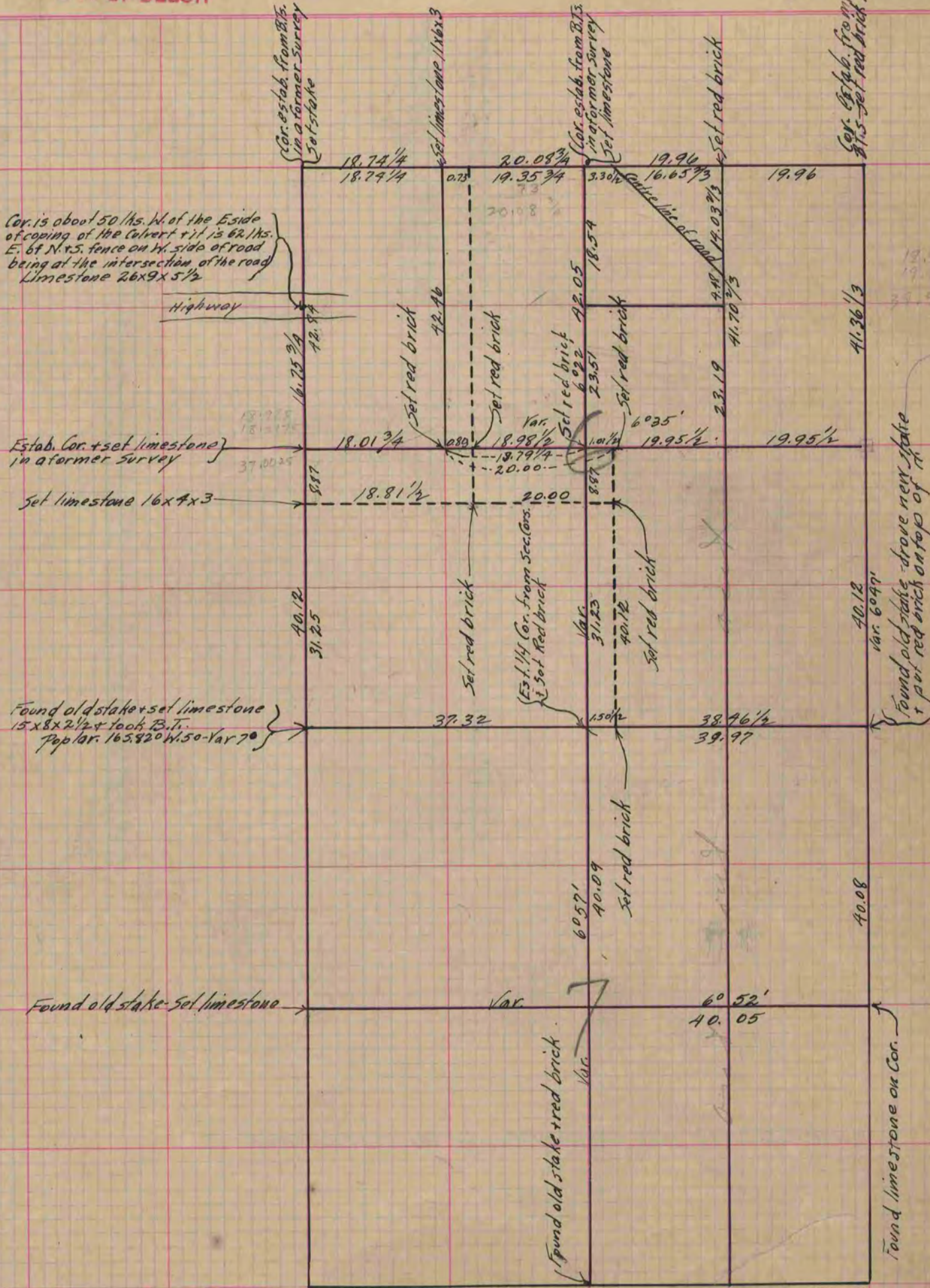
Rock County, Wisconsin, made March the 14, 17, 18, 19+21 1890

I hereby certify that the following is a correct record of said survey as made by me.

COUNTY BUILDING  
IN CITY OF БЕЛОIT

(Signed) Edward Ruger  
R. H. B.

Deputy  
County Surveyor.



Copied from Page 18 Vol. 1. Original County Surveyors Record