

PLAT AND RECORD

71

Of a Survey on Section 33 T 4 R 13 E. of the 4 P. M. in Milton Township

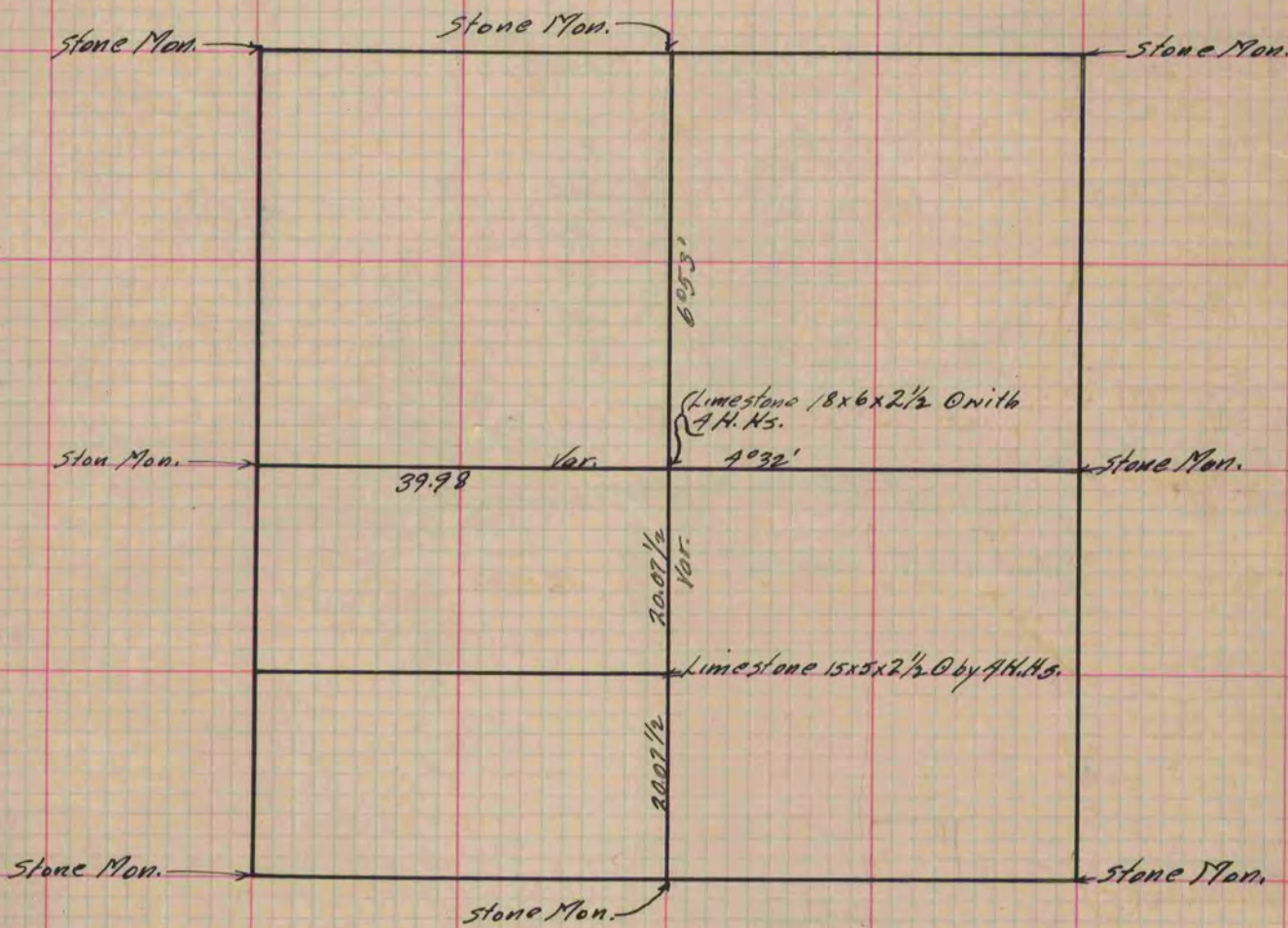
Rock County, Wisconsin, made September the 25 1871

I hereby certify that the following is a correct record of said survey as made by me.

COUNTY BUILDING
IN CITY OF BELOIT

(Signed) Edward Roger

County Surveyor.



Copied from Page 43 Vol. 2. Original County Surveyor's Record.