

# PLAT AND RECORD

Of a Survey on Section 34 T 4 R 11 E. of the 4 P. M. in Porter Township

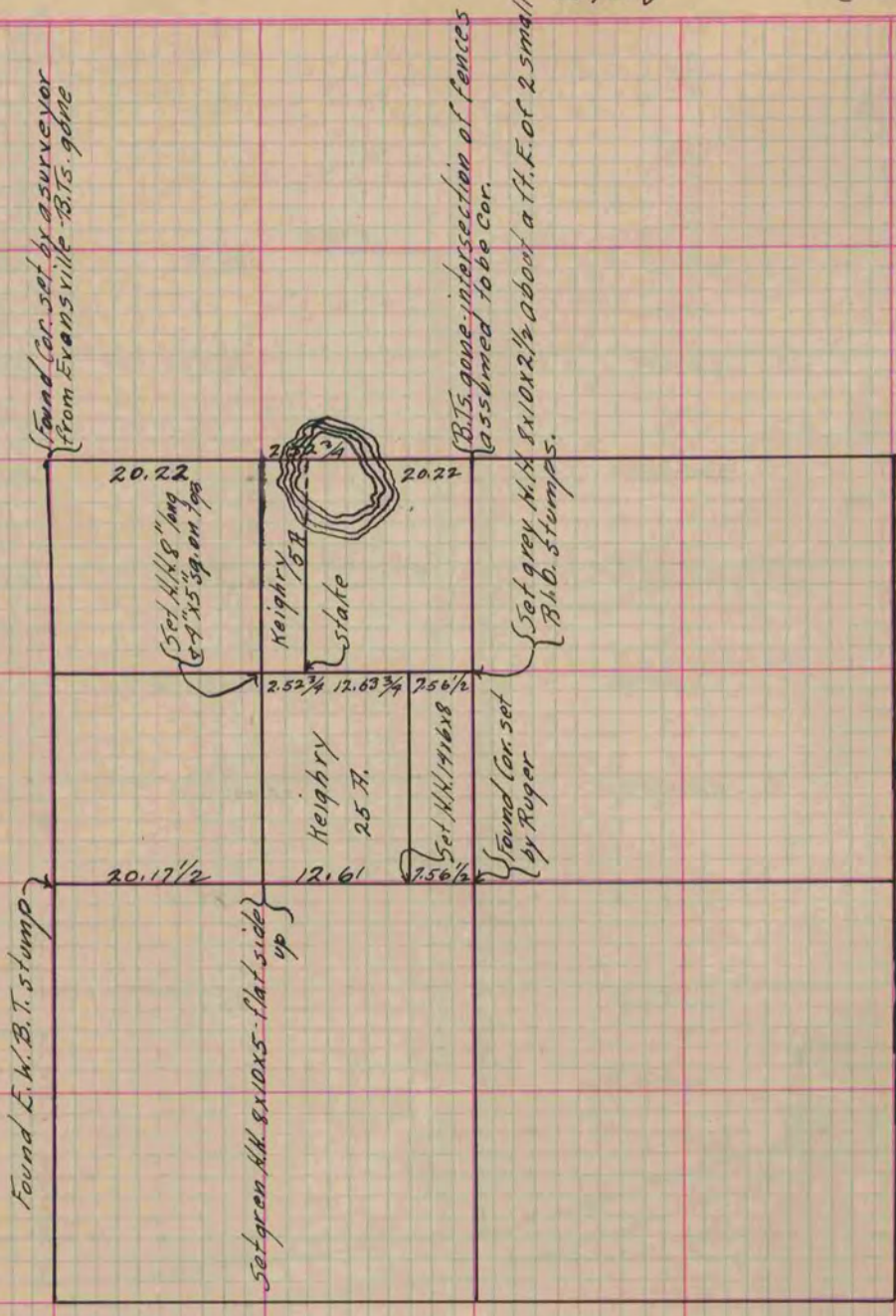
Rock County, Wisconsin, made February the 7th & 8th 1873

I hereby certify that the following is a correct record of said survey as made by me.

COUNTY BUILDING  
IN CITY OF BELOIT

(Signed) R. K. Lee

Deputy  
County Surveyor.



Copied from Page 55 Vol. 2 Original County Surveyor's Record.