

PLAT AND RECORD

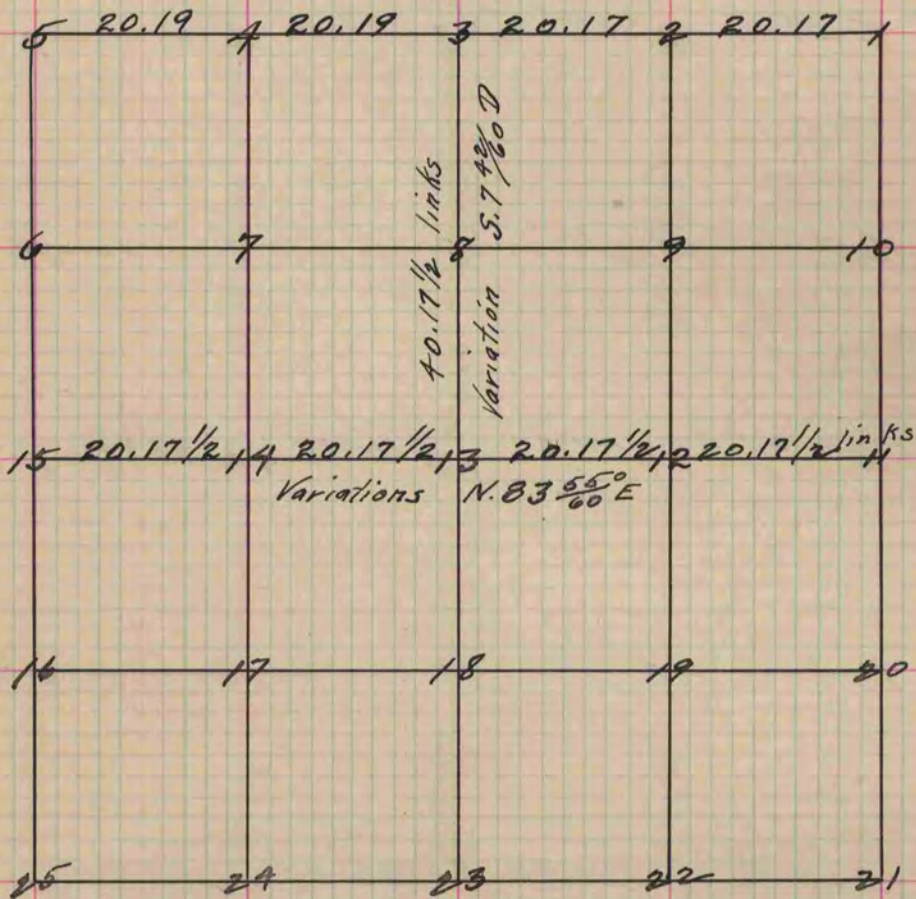
Of a Survey on Section 35 T 2 R 11 E. of the 4 P. M. in Plymouth Township
Rock County, Wisconsin, made March the 26th 1856

I hereby certify that the following is a correct record of said survey as made by me.

COUNTY BUILDING
IN CITY OF BELOIT

(Signed) Joseph Church
JACB

County Surveyor.



- Fig. 13 W.O. 20 N. 67 W. 46
- 30 N. 85 1/2 E. 95
- " 12 Br.O. 12 S. 20 1/4 W. 225
- " " 16 N. 18 3/4 W. 353
- " 14 W.O. 24 N. 70 W. 22 1/2
- 20 S. 57 W. 66
- " 4 W.O. 20 N. 55 W. 120
- " 2 Bl.O. 20 N. 66 E. 70

Copied from Page 63 Vol. 1 Original County Surveyors Record.