

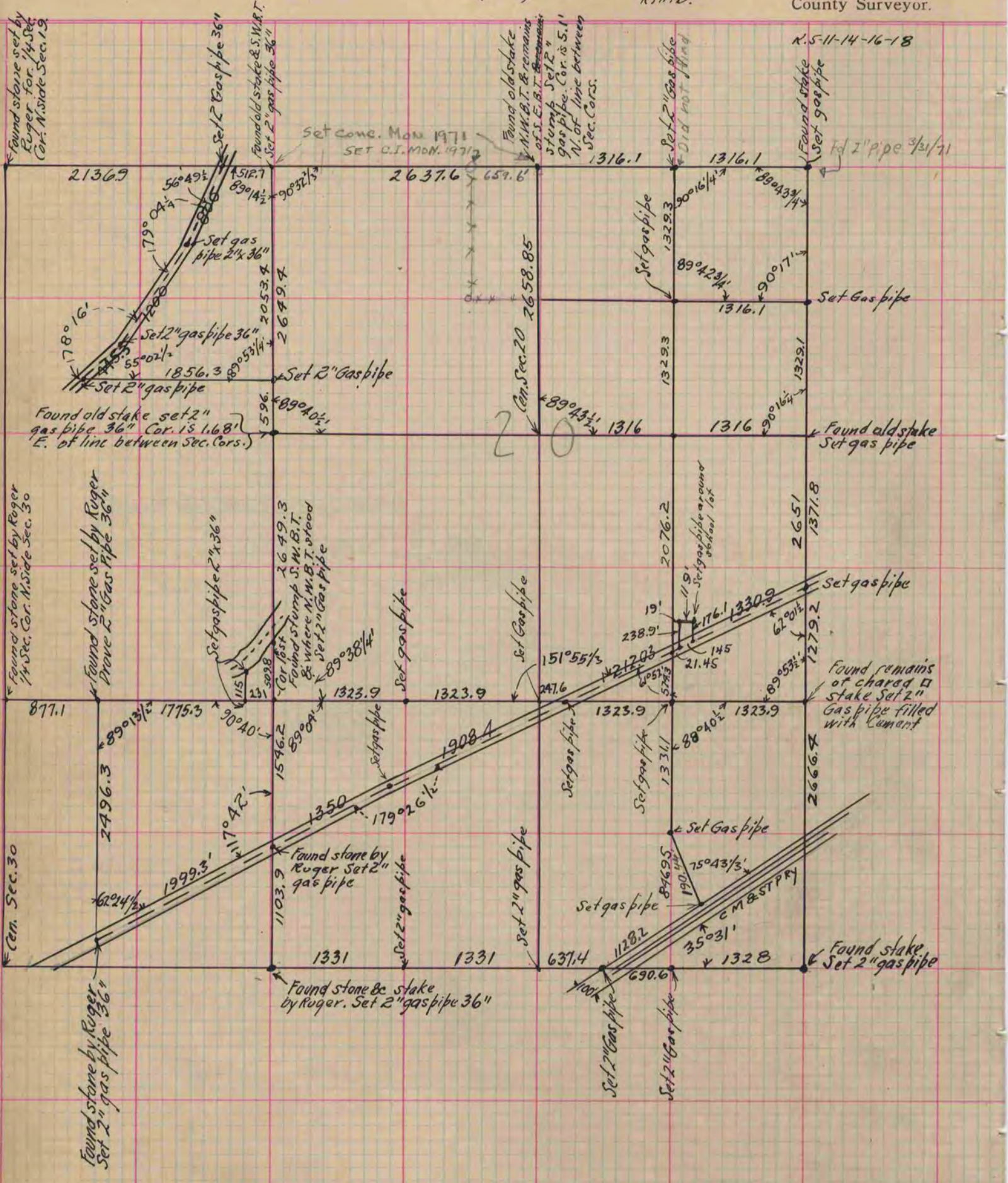
PLAT AND RECORD

Of a Survey on Section 19, 20, 29 T 1 R 13 E. of the 4 P. M. in Turtle Township
Rock County, Wisconsin, made April 1st to 10th the 1911

I hereby certify that the following is a correct record of said survey as made by me.

(Signed) C.V. Kerch
R.H.B.

County Surveyor.



See Recorded Plat of MORGAN FARM