

PLAT AND RECORD

Of a Survey on Section 9 T 1 R 14 E. of the 4 P. M. in Clinton Township
Rock County, Wisconsin, made September the 7th 1855

I hereby certify that the following is a correct record of said survey as made by me.

COUNTY BUILDING
IN CITY OF БЕЛОИТ

(Signed) Joseph Church
JMC

County Surveyor.

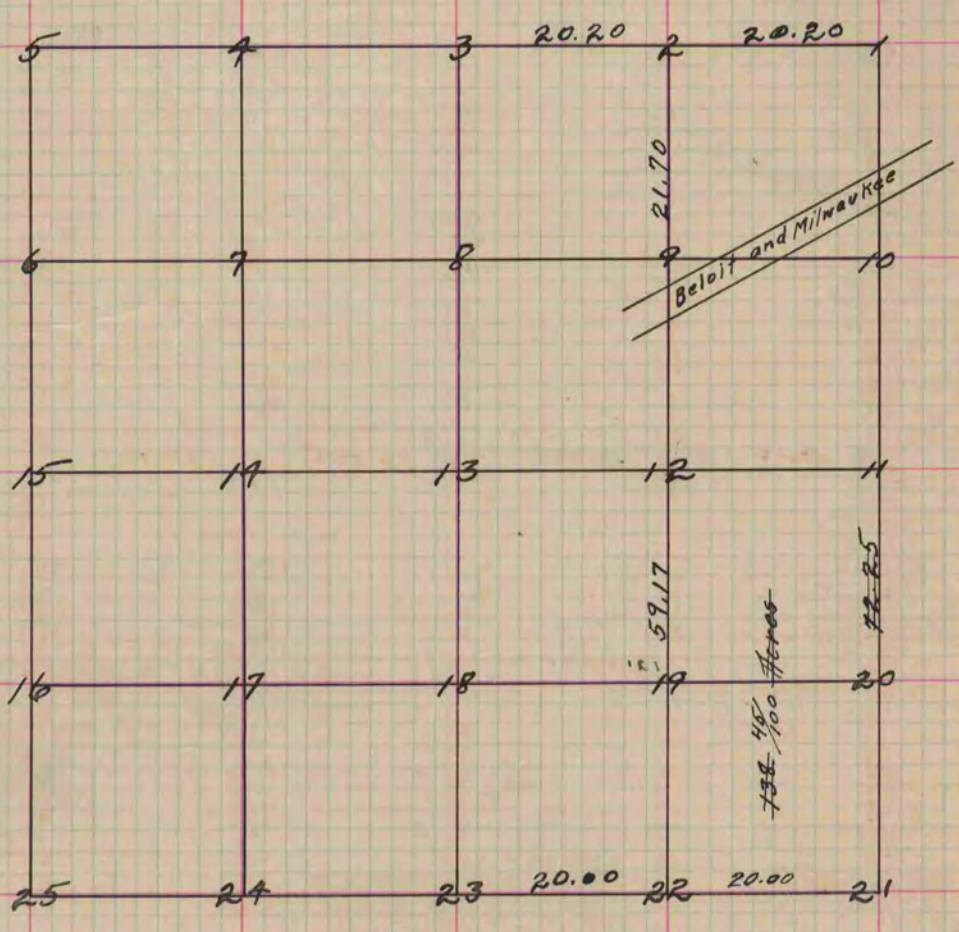


Fig. 9 is 21.70 links South on the line from Fig. 2 and
is in the centre of the Beloit and Milwaukee Rd.
Fig. 22 Stake and Stone.
" 23 Mound
" 21 Post in Mound
From Fig. 21 to highway 72.25 links
Copied from Page 50 Vol. 1 Original County Surveyors Record.