

# PLAT AND RECORD

Of a Survey on Section 18 T 1 R 14 E. of the 4 P. M. in Clinton Township

Rock County, Wisconsin, made February the 22<sup>nd</sup> & 23<sup>rd</sup> 1859

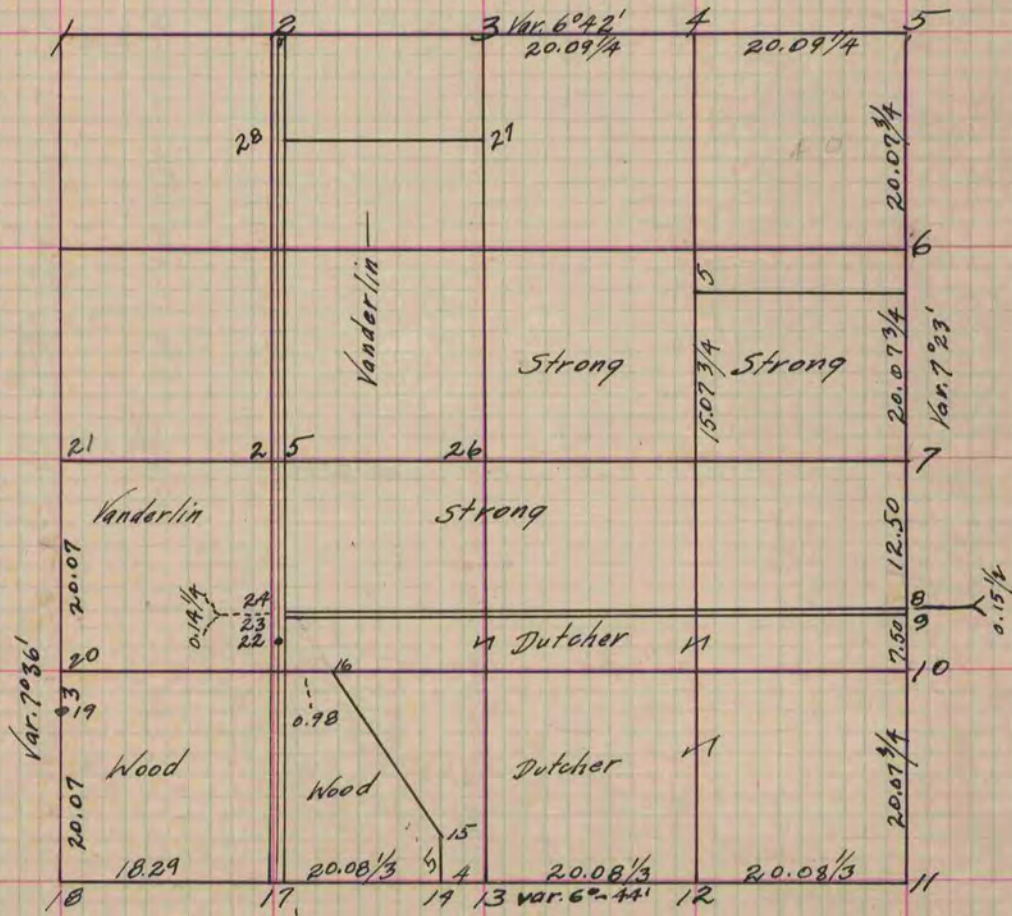
COUNTY BUILDING IN CITY OF БЕЛОIT hereby certify that the following is a correct record of said survey as made by me.

(Signed) Edward Ruger

County Surveyor.

For Strong, Dutcher, Woods & Vanderlin

Distances given in chains.  
Variations marked on the lines.



- Fig. 7 Post in fence N. 57° E. 6 1/2'
- " " " " S. 50° W. 5'
- " 9 Locust 5 N. 46° E. 2.65
- " " " " N. 19° 25' E. 2.16 2/3
- " 11 Tree Sec. Corner Willow 2 inches.
- " 12 Wild Plum 2 N. 30° 45' E. 11 2/3
- " " " " 2 N. 5° 05' E. 14
- " 14 Black Oak 4 N. 15° 15' W. 34 1/2
- " " " " 8 S. 73° W. 22 1/2
- " 15 " " 9 S. 69° W. 66 2/3
- " " " " 13 N. 27° 40' E. 53

- Fig. 19 Burr Oak 22 N. 73° 25' W. 42 1/3
- " " " " 10 S. 19° 35' E. 74 1/2
- " 20 " " 10 S. 87° 55' W. 248 1/3
- " " " " 17 S. 26° W. 175
- " 21 Took new Wit. trees.
- " 21 Burr Oak 8 S. 51° 35' E. 170 3/4
- " " " " 8 N. 68° 28' W. 170
- " 29 " " 8 S. 84° 20' W. 114

Copied from Page 103 Vol. 1 Original County Surveyors Record.