

U.S. PUBLIC LAND SURVEY MONUMENT RECORD

For Public Land Survey Corners In: **WI ADMINISTRATIVE CODE A-E 7.08 REQUIREMENT**

T. 1 N. - R. 14 E. of the 4th P.M.

CORNER CODE INDEX

(PLACE "◆" SYMBOL AT PROPER PLSS CORNER LOCATION)

| | | | | | | | | | | | | | | | | | | | | | | | | | | | |
|---|---|---|---|---|---|---|---|---|---|----|----|----|----|----|----|----|----|----|----|----|----|----|----|----|----|--|---|
| | 1 | 2 | 3 | 4 | 5 | 6 | 7 | 8 | 9 | 10 | 11 | 12 | 13 | 14 | 15 | 16 | 17 | 18 | 19 | 20 | 21 | 22 | 23 | 24 | 25 | | |
| A | | | | | | | | | | | | | | | | | | | | | | | | | | | A |
| B | | | | | | | | | | | | | | | | | | | | | | | | | | | B |
| C | | | | | | | | | | | | | | | | | | | | | | | | | | | C |
| D | | | | | | | | | | | | | | | | | | | | | | | | | | | D |
| E | | | | | | | | | | | | | | | | | | | | | | | | | | | E |
| F | | | | | | | | | | | | | | | | | | | | | | | | | | | F |
| G | | | | | | | | | | | | | | | | | | | | | | | | | | | G |
| H | | | | | | | | | | | | | | | | | | | | | | | | | | | H |
| J | | | | | | | | | | | | | | | | | | | | | | | | | | | J |
| K | | | | | | | | | | | | | | | | | | | | | | | | | | | K |
| L | | | | | | | | | | | | | | | | | | | | | | | | | | | L |
| M | | | | | | | | | | | | | | | | | | | | | | | | | | | M |
| N | | | | | | | | | | | | | | | | | | | | | | | | | | | N |
| O | | | | | | | | | | | | | | | | | | | | | | | | | | | O |
| P | | | | | | | | | | | | | | | | | | | | | | | | | | | P |
| Q | | | | | | | | | | | | | | | | | | | | | | | | | | | Q |
| R | | | | | | | | | | | | | | | | | | | | | | | | | | | R |
| S | | | | | | | | | | | | | | | | | | | | | | | | | | | S |
| T | | | | | | | | | | | | | | | | | | | | | | | | | | | T |
| U | | | | | | | | | | | | | | | | | | | | | | | | | | | U |
| V | | | | | | | | | | | | | | | | | | | | | | | | | | | V |
| W | | | | | | | | | | | | | | | | | | | | | | | | | | | W |
| X | | | | | | | | | | | | | | | | | | | | | | | | | | | X |
| Y | | | | | | | | | | | | | | | | | | | | | | | | | | | Y |
| Z | | | | | | | | | | | | | | | | | | | | | | | | | | | Z |
| | 1 | 2 | 3 | 4 | 5 | 6 | 7 | 8 | 9 | 10 | 11 | 12 | 13 | 14 | 15 | 16 | 17 | 18 | 19 | 20 | 21 | 22 | 23 | 24 | 25 | | |

CLINTON TWP
ROCK COUNTY WI

COORDINATES
(GNSS DERIVED VIA WISCORS)

NORTHING: 210746.492

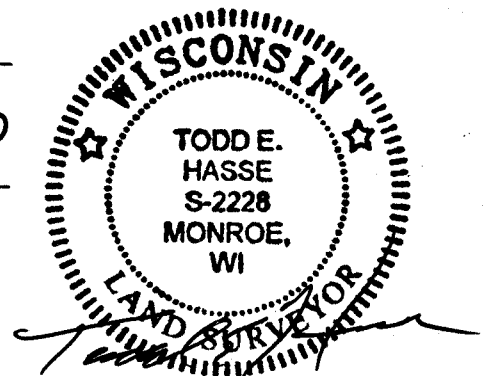
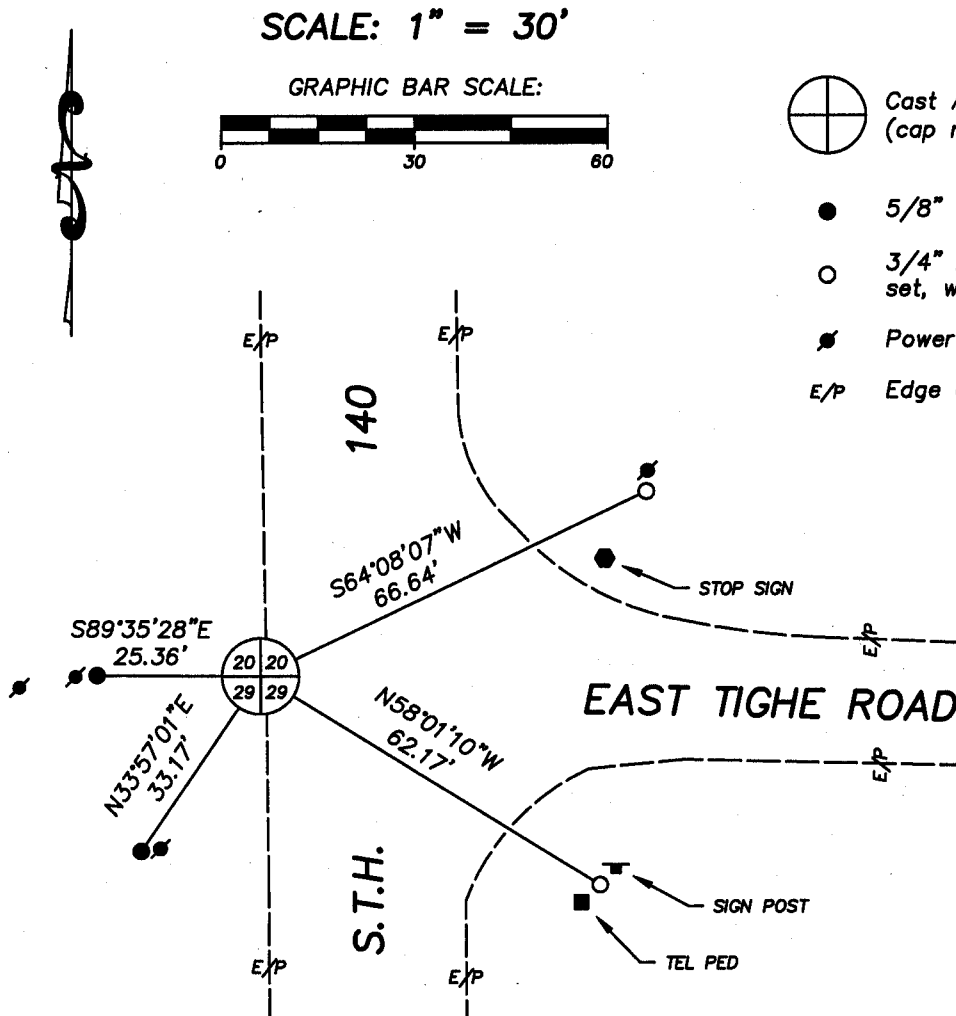
EASTING: 535829.186

ELEV: 947.74

Hor. Datum: WCCS-ROCK, (NAD83 2011)

Vertical Datum: NAVD 88

(a) LEGEND



January 14th, 2014

PREPARED FOR:

American Transmission Company
c/o Patrick Cowell
5303 Fen. Oak Drive
Madison, WI 53718-8810
(608) 877-7130

HASSE
SURVEYING
W5820 ILIFF ROAD
MONROE, WI 53566
(608) 328-5321 PHONE
(608) 329-5321 FAX

U.S. PUBLIC LAND SURVEY MONUMENT RECORD

- (B) Describe any record evidence, monument evidence, occupational evidence, testimonial evidence or any other material evidence you considered, and whether the monument was found or placed.

This monument location was previously established by Rock County Surveyor Donald Barnes on 10-30-1980, as shown on County Surveyor Records Volume 6, Page 80. I found a Berntsen Cast Aluminum monument 1' below the gravel surface, with the aluminum cap missing. I shot and accepted the center of the stem as being the corner location. I found (2) existing witness monument and I set (2) new witness monuments as shown.

- (C) Was the corner restored through acceptance of (1) an obliterated evidence location, or, (2) a found perpetuated location?

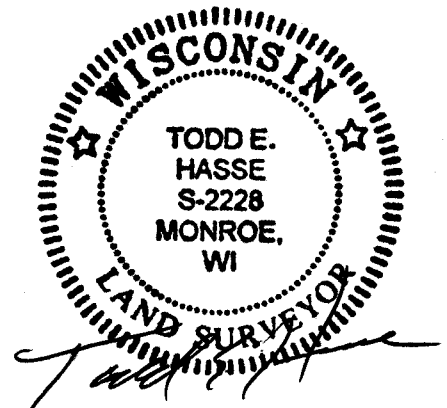
This monument location was a found perpetuated location.

- (D) Describe any material discrepancy between the location of the corner as restored or reestablished and the location of that corner as previously restored or reestablished by distance and direction. Show the discrepancy on the plan view drawing under (a), above. Show the distances between the corner as previously restored or reestablished an (1) the corner as restored or reestablished, and (2) to at least 4 of the witness monuments shown on the drawing in (a) above.

- (E) Was the corner reestablished through lost corner proportionate methods? If so, show the method, including the directions and distances to other public land survey corners used as evidence or used for proportioning the corner location.

| | |
|------------------------------|-----------------------|
| S 1/4 corner to SE corner | S88°04'14"E, 2640.07' |
| S 1/4 corner to SW corner | N88°09'39"W, 2644.47' |
| S 1/4 corner to N 1/4 corner | N00°26'14"W, 5321.62' |

I, Todd E. Hasse, hereby certify that this corner location as identified by the corner code index, was determined by me and under my direction and control and that this U.S. Public Land Survey Monument Record is correct and complete to the best of my knowledge and belief.



January 14th, 2014

PAGE 2 OF 2

CORNER CODE

R-7

 **HASSE
SURVEYING**
W8820 ILIFF ROAD
MONROE, WI 53566
(608) 328-5321 PHONE
(608) 328-5321 FAX