

U.S. PUBLIC LAND SURVEY MONUMENT RECORD

For Public Land Survey Corners In: **WI ADMINISTRATIVE CODE A-E 7.08 REQUIREMENT**

T. 1 N. - R. 14 E. of the 4th P.M.

CORNER CODE INDEX

(PLACE "◆" SYMBOL AT PROPER PLSS CORNER LOCATION)

A	1	2	3	4	5	6	7	8	9	10	11	12	13	14	15	16	17	18	19	20	21	22	23	24	25	A
B																										B
C	6					5				4					3					2						C
D																										D
E																										E
F																										F
G	7					8				9					10					11						G
H																										H
J																										J
K	18					17				16					15					14						K
L																										L
M	18					17				16					15					14						M
N																										N
O	19					20				21					22					23						O
P																										P
Q	19					20				21					22					23						Q
R																										R
S																										S
T	30					29				28					27					26						T
U																										U
V																										V
W	31					32				33					34					35						W
X																										X
Y	31					32				33					34					35						Y
Z																										Z
	1	2	3	4	5	6	7	8	9	10	11	12	13	14	15	16	17	18	19	20	21	22	23	24	25	

CLINTON TWP
ROCK COUNTY WI

COORDINATES
(GNSS DERIVED VIA WISCORS)

NORTHING: 216067.960

EASTING: 535788.589

ELEV: 965.28

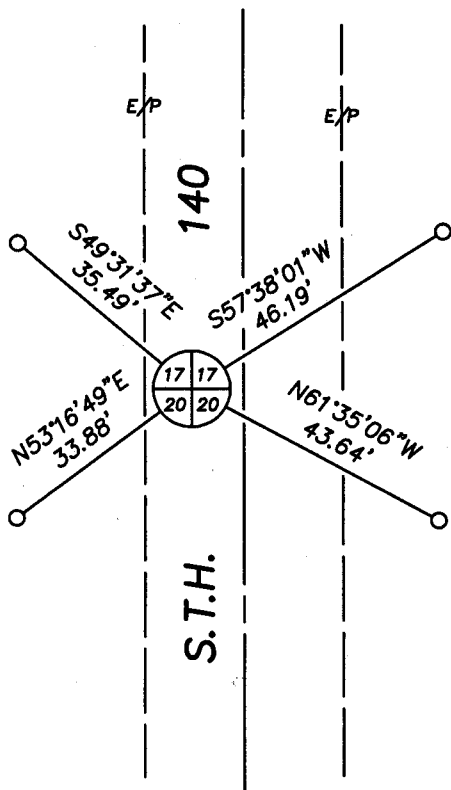
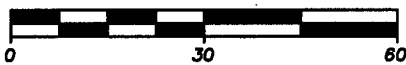
Hor. Datum: WCCS-ROCK, (NAD83 2011)

Vertical Datum: NAVD 88

(a) LEGEND

SCALE: 1" = 30'

GRAPHIC BAR SCALE:



LEGEND:

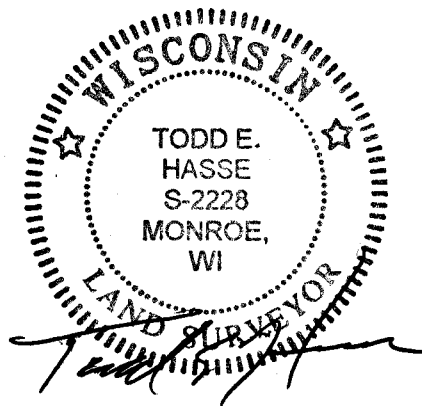


Cast Aluminum monument found
(cap & stem missing, shot center).



3/4" X 24" solid round iron rod
set, weighing 1.50 lbs per lineal ft.

E/P Edge of pavement.



January 14th, 2014

PREPARED FOR:

American Transmission Company
c/o Patrick Cowell
5303 Fen. Oak Drive
Madison, WI 53718-8810
(608) 877-7130

HASSE
SURVEYING
W5820 ILIFF ROAD
MONROE, WI 53588
(608) 326-5321 PHONE
(608) 326-5321 FAX

U.S. PUBLIC LAND SURVEY MONUMENT RECORD

- (B) Describe any record evidence, monument evidence, occupational evidence, testimonial evidence or any other material evidence you considered, and whether the monument was found or placed.

This monument was previously established by Rock County Surveyor Donald Barnes on 5-1-1986. I found a Berntsen Cast Aluminum monument .5' below the paved surface, with the aluminum cap and stem missing. On the Tie Sheet for this corner by Surveyor Barnes, he said the he "Placed a Poly Monument mid way between the SW & SE corners of Section 17 and 2.36' North of a line between those corners". I also found another Tie Sheet for this corner location, which listed dimensions from the NW corner to the NE corner of Section 20 to be S88°56'57"E, 5312.05'. As you can see from my dimensions as shown, this monument is not midway between those corners and is located 2.02' North of a straight line from the NW corner to the NE corner. I shot and accepted the center of the existing monument as being the true corner location as marked by Surveyor Barnes. I set (4) new witness monuments as shown and this corner location is approximately 185' north of the intersection of S.T.H. 140 and East Lake Shore Road and 8.0' West of the centerline of S.T.H. 140.

- (C) Was the corner restored through acceptance of (1) an obliterated evidence location, or, (2) a found perpetuated location?

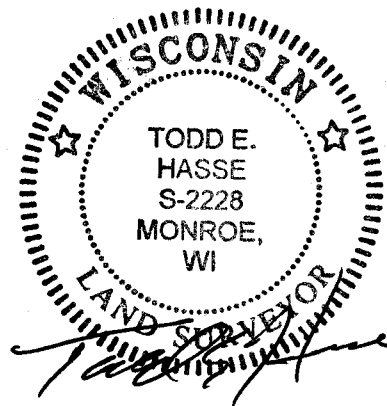
This monument location was a found perpetuated location.

- (D) Describe any material discrepancy between the location of the corner as restored or reestablished and the location of that corner as previously restored or reestablished by distance and direction. Show the discrepancy on the plan view drawing under (a), above. Show the distances between the corner as previously restored or reestablished an (1) the corner as restored or reestablished, and (2) to at least 4 of the witness monuments shown on the drawing in (a) above.

- (E) Was the corner reestablished through lost corner proportionate methods? If so, show the method, including the directions and distances to other public land survey corners used as evidence or used for proportioning the corner location.

N 1/4 corner to NE corner	S88°01'07"E, 2656.07'
N 1/4 corner to NW corner	N88°06'21"W, 2652.84'
NW corner to the NE corner	S88°03'44"E, 5308.92'
N 1/4 corner to S 1/4 corner	S00°26'14"E, 5321.62'

I, Todd E. Hasse, hereby certify that this corner location as identified by the corner code index, was determined by me and under my direction and control and that this U.S. Public Land Survey Monument Record is correct and complete to the best of my knowledge and belief.



January 14th, 2014