

Paper weight-110# (minimum)

Black nonfading ink required

U.S. PUBLIC LAND SURVEY MONUMENT RECORD

For Public Land Survey Corners In:
T. 1 N. R. 14 E. 4th P.M.

WI ADMINISTRATIVE CODE A-E 7.08 REQUIREMENT
REV 10/23/2004 USMONREC.DWG

CORNER CODE INDEX

	1	2	3	4	5	6	7	8	9	10	11	12	13	14	15	16	17	18	19	20	21	22	23	24	25		
A																											A
B																											B
C																											C
D																											D
E																											E
F																											F
G																											G
H																											H
J																											J
K																											K
L																											L
M																											M
N																											N
O																											O
P																											P
Q																											Q
R																											R
S																											S
T																											T
U																											U
V																											V
W																											W
X																											X
Y																											Y
Z																											Z

PLACE MONUMENT SYMBOL AT PROPER LOCATION ON ABOVE INDEX

CLINTON TWP

ROCK COUNTY WI

IF AVAILABLE
ROCK COUNTY COORDINATES PREFERRED

North _____ Elev. _____

East _____

Hor. Datum _____ Vert. Datum _____

LATITUDE _____ ELLIPS. HT. _____

LONGITUDE _____

NAD83(91) _____ NETWORK ADJ. YR _____

GPS (X) _____ TRAVERSE (X) _____

BASED ON THE FOLLOWING CONTROL:

CORNER MONUMENT

WITNESS MONUMENT

BEARINGS ARE BASED ON: _____

FIELD BOOK _____ PAGE # _____

SHEET 1 OF 6

SHOW A PLAN VIEW DRAWING DEPICTING THE CORNER MONUMENT AND SURROUNDING PHYSICAL FEATURES, INCLUDING THE EXCAVATION AREA AND DEPTH.

PLANNING & ZONING COMMITTEE ADOPTED THIS FORM ON 12/2/1982

CORNER CODE 5-7(2)

CL544 S1/4CORSECB

(B) Describe any record evidence, monument evidence, occupational evidence, testimonial evidence or any other material evidence you considered, and whether the monument was found or placed.

- 1856 HOBART BOOK #3 PG 12 "CLINTON" SET STONE MON. VAR 5-45 EAST. SB9-05E ALONG SOUTH LINE OF SE 1/4 OF SEC 8, N1-05W ALONG WEST LINE OF SE 1/4 OF SEC 8, CALLS FOR 56.1 FROM INTERSECTION OF SEC LINE & CENTER OF R/R TO NORTH R/W LINE OF RAILROAD, & 107.91' FROM INTERSECTION OF SEC LINE & CENTER OF R/R TO SOUTH R/W LINE OF RAILROAD, BEARING OF CENTER OF R/R IS N62-56E
- 1881 LEE VOL 6 PG 72 [SAME INFORMATION AS IN #876] THE PLAT OF SURVEY BY R. LEE IN 1881 IS FRAMED IN THE CLINTON CITY HALL.
- 1881 LEE VOL 2 PG 320 & #876 COR LOST DUG OUT BY RY. EST. IT EQUIDISTANT FROM SEC CORS. NB6-41E 2636.04 TO SE COR SEC 8, SB6-41W 2636.04 TO SW COR SEC 8.
- 19?? SURVEYOR UNKNOWN MAP #874 & #6532 IRON BOLT AT SEC COR. 16.5' NORTH OF CENTER OF R/R TRACKS, 38.84 SOUTH OF NORTH RAILROAD R/W. NORTHERLY 343.34 FROM S 1/4 COR SEC 8 TO PROPERTY LINE. AT PROPERTY THENCE WESTERLY 33 TO GAS PIPE (ANGLE 90). ANGLE 116-09-15 @ CENTER OF R/R TRACKS FROM THE SW CENTER OF TRACKS TO THE N/S 1/4 LINE OF SEC 8.
- 1930 BATTERMAN VOL 3 PG 180 FD WOOD STAKE & REPLACED IT WITH IRON BOLT. REFERENCED TO SIGNAL LIGHT CONC. BASES. SHOWS NORTH OF CENTER OF R/R TRACKS.
- 1932 SUNNY VOL 3 PG 127 THESE MONUMENTS WERE REFERENCED OUT BY R.H. BATTERMAN AUG 6,7,8,1930 PREPARATORY TO PAVING & RESET BY ME AS SHOWN. (SAME TIES AS PG 180). RESET MON WITH 1" PIPE 2' LONG & FLUSH WITH PENETRATION ASHPAHLT PAVEMENT. SUNNYS MEASUREMENTS TO BATTERMAN'S CALL ARE THE SAME EXCEPT TO THE ONE BUILDING CORNER. BATTERMAN'S DISTANCE IS 86.70 AND SUNNY'S IS 86.9.
- 1954 BATTERMAN #3656 & 13139 TIES TO SIGNAL BOX. SET PIN 1/2 WAY BETWEEN S 1/4 COR SEC 8 & CENTER OF SEC 8 (GROSS IN CONC.) 2654.46 FROM S 1/4 COR TO CENTER OF SEC 8.
- 19?? #878 DOT FD IP IN MON. BOX. TIES TO R/R SIGNAL LIGHTS & CORNER OF BUILDING FOUNDATION (CREAMERY).
- 1960 WIDOT J-7 CALLS FOR CORNER & REFERENCED TO SIGNAL BASES. STATES NOTHING ABOUT MON.
- 1964 WPL #2042 STATES NOTHING ABOUT MON. 472.55 ALONG THE N/S 1/4 LINE OF SEC 8; THENCE AT A 90 ANGLE 33 TO SE COR LOT COR. LOT IS 200 WIDE & 295.90 DEEP.
- 1966 BATTERMAN VOL 4 PG 252 FD PIN @ S 1/4 COR SEC 8. 9.32' PERPENDICULAR AND NORTH OF THE NORTH RAIL OF RR TRACKS. REFERENCED COR WITH RR SPIKES IN POWER POLES. DETAIL OF TRACK SHOWS CORNER 9.32' PERPENDICULAR TO NORTH RAIL.
- 1967 LEE #6540 FD PIN IN MON. BOX. SB3-38-50W 2640.22 ALONG SEC LINE TO IP SURROUNDED BY HH @ NW COR SEC 17; THENCE S5-24-40E 1006.44 ALONG SEC LINE TO PROPERTY COR. NB6-41E 2636.06 TO NE COR SEC 17. NB6-41E 25.34 ALONG SECTION LINE TO CENTER OF R/R R/W & NB6-41E FROM S 1/4 COR TO INTERSECTION OF SEC LINE & EASTERLY R/R R/W. FROM S 1/4 COR SEC 8 ALONG N/S 1/4 LINE OF SEC 8 330.54 (REC 326.84) TO PROPERTY COR.
- 1971 LEE GSM VOL 2 PG 97 STATES NOTHING ABOUT MON. NORTH ALONG 1/4 LINE 326.84 TO SE PROPERTY COR; THENCE NORTHERN 70.00 TO NE PROPERTY COR. R/W IS 33.00.

David Barne
10/02/08

CORNER CODE J-7(2)

- CL544 S1/4CORSEC8
- 1971 BATTERMAN CSM VOL 2 PG 190 STATES NOTHING ABOUT MON. N5-12-35W 400.54 TO NORTH LINE OF RD; THENCE WESTERLY 328.22 TO PROPERTY COR. 992.54 FROM INT. OF SEC LINE & NORTH RAILROAD R/W LINE TO PROPERTY COR. S87-08-30W FROM S 1/4 COR SEC 8 ALONG SOUTH SW 1/4 LINE.
- 1974 NEE CSM VOL 4 PG 56 BASICALLY THE SAME AS CSM VOL 2 PG 190
- 1974 COMBS SUB #02020 ASSESSOR'S PLAT VILLAGE OF CLINTON, DL 62, 63&64 CSM 2 PG 190. FD BRASS PLUG @ CENTER OF SEC 8. FROM CENTER OF SEC 8 S4-32-30E TO FD PIN IN MON BOX @ S 1/4 COR SEC 8. FROM S 1/4 COR SEC 8 TO PROPERTY COR ON SEC LINE IS S87-08-30W 328.0. NORTHERN RAILROAD R/W IS S59-10-45W.
- 1975 LEE CSM VOL 4 PG 329 STATES NOTHING ABOUT MON. N5-12-35W 400.54 TO NORTH LINE OF DELCO DR., S85-18-05W 546.02 TO SE COR OF 70.00 N/S ST.
- 1977 COMBS CSM VOL 7 PG 40 FD PIN IN MON. BOX EAST ALONG SOUTH LINE OF SE 1/4 OF SEC 8, S1-51-50E ALONG N/S 1/4 LINE OF SEC 17.
- 1979 KIENBAUM CSM VOL 8 PG 336 FD PIN IN MON. BOX. N4-31-05W 400.54 TO INT OF NORTH DELCO R/W & N/S 1/4 LINE; THENCE S85-18-05W 295.65 TO PROPERTY COR.
- 1982 BARNES J-7(1) FD MON. BOX & WIDOT REFERENCES. 203,155; 2,305,817'
- 1982 RD RESURFACED.
- 1985 BARNES J/K 7 TIE FOR STA 24 CLINTON TWP PROJECT. FD REROD IN MON. BOX. REFERENCED STA 24, WHICH IS IN THE CENTER OF THE RR TRACKS & CENTER OF N/S PVMT. N6-05-45W 12.67 TO REROD IN MON. BOX
- 1986 SCHROEDER CSM VOL 12 PG 336 USED FOR N/S 1/4 LINE OF SEC 17. STATED NOTHING ABOUT MON.
- 1987 LEE CSM VOL 13 PG 38 FD PIN IN MON. BOX NORTH ALONG 1/4 LINE 42.03; THENCE N63-40-52E 36.82 ALONG NORTH RAILROAD R/W LINE; THENCE N63-40-52E 409.29 ALONG NORTH RAILROAD R/W LINE TO PROPERTY COR.
- 1987 LEE CSM VOL 13 PG 127 FD PIN IN MON. BOX. NORTH 656.95 ALONG N/S 1/4 LINE TO SOUTH RAILROAD LINE; THENCE S62-59-10E 37.04 ALONG SOUTH RAILROAD LINE; THENCE S62-59-10E 650.10 ALONG SOUTH RAILROAD LINE TO PROPERTY COR.
- 1988 COMBS #11664 & 12504 FD 1" PIN IN MON. BOX. N4-32-40W ALONG 1/4 LINE. N/S ROAD RIGHT OF WAY ON WEST SIDE IS N4-49-30E
- 1989 COMBS #11464 STATES NOTHING ABOUT MON. N4-58-40W 719.70 ALONG N/S 1/4 LINE TO CENTER OF R/R ROW; THENCE S67-56-55E 976.24 ALONG CENTER OF R/R ROW.
- 1990 LEUNEMBERGER CSM VOL 14 PG 241 STATES NOTHING ABOUT MON. N89-43-42E 1321.95 TO 1/16TH COR; THENCE N5-11-00W ALONG 1/16TH LINE. 2643.90 TO FD ALUM @ SE COR SEC 8.
- 1994 KREBS CSM VOL 17 PG 219 LEGEND FD CUT STONE 1320.11 TO S 1/16TH COR OF SW 1/4 OF SEC 8
- 1994 KREBS CSM VOL 17 PG 252 FD PIN IN MON. BOX SOUTH ALONG N/S 1/4 LINE OF SEC 17 3501.29 TO NE PROPERTY COR; THENCE SOUTH 200.65 TO SE PROPERTY COR. R/W IS 40.03 @ PROPERTY LINE.
- 1994 GORDON CSM VOL 18 PG 16 STATES NOTHING ABOUT MON. N019-07W 2660.70 TO CENTER OF SEC 8, 5012.63 TO N 1/4 COR SEC 8.
- 1995 KREBS CSM VOL 18 PG 326 FD PIN IN MON. BOX 1320.11 TO S 1/16TH COR OF SW 1/4 OF SEC 8

Donald Barnes
10/02/08

CORNER CODE J-7(2)

CL544 S1/4CORSECB
 1995 KREBS #9254 FD PIN IN MON BOX. N88-52-36W 2639.92 TO FD ALUM. @ NW COR SEC 17. FROM N 1/4 COR SEC 17 SO-56-21E 591.10 ALONG N/S 1/4 LINE TO SET R/R SPIKE (NE COR OF LOT); SO-56-21E 400.26 TO SET R/R SPIKE (SE COR OF LOT); SO-56-21E TO BROKEN ALUM. MON. @ S 1/4 COR SEC 17. FROM NW COR SEC 17 SO-47-47E 2654.86 TO FD BROKEN ALUM. MON. @ W 1/4 COR SEC 17.
 1998 KREBS CSM VOL 21 PG 384 FD R/R SPIKE 1320.11 TO S 1/16TH COR OF SW 1/4 OF SEC 8
 1998 COMBS CSM VOL 21 PG 269 FD R/R SPIKE 1320.11 TO S 1/16TH COR OF SW 1/4 OF SEC 8
 1999 KREBS CSM VOL 22 PG 152 FD R/R SPIKE NO-27-10W 5315.45 TO IRON PIN @ N 1/4 COR SEC 8. NO-27-10W 1734.86 ALONG N/S 1/4 LINE TO PROPERTY COR.
 1999 UNKNOWN #6526 CALLS FOR PIN. TIES. DISTANCES TO R/R SIGNAL LIGHTS & CORNERS OF CREAMERY BUILDING. CALLS FOR 10.35 NORTH OF NORTH R/R RAIL.
 1999 KREBS CSM VOL 22 PG 426 FD R/R SPIKE, N88-24-30W 2639.91 TO FD ALUM. MON. @ SW COR SEC 8. FROM SW COR SEC 8 TO FD ALUM. @ W 1/4 COR SEC 8 IS NO-06-20W 2656.27
 1999 KREBS CSM VOL 22 PG 428 FD R/R SPIKE N86-43-42E 1321.95 TO 1/16TH COR OF SE 1/4 SEC 8, N5-11-00E FROM 1/16TH COR ALONG 1/16TH LINE. N86-43-42E 2643.90 TO FD ALUM. @ SE COR SEC 8.
 2000 KIENBAUM CSM VOL 23 PG 231 FD R/R SPIKE. N88-24-30W 2639.91 TO FD ALUM. @ SW COR SEC 8, NO-06-20W 2656.27 FROM SW COR SEC 8 TO ALUM @ W 1/4 COR SEC 8.
 2003 LEUENBERGER #10435 SUB CSM 13-127 2/6 SIZE 1 "CLINTON" FD CUT X ON R/R SPIKE. NO-00-00E 656.95 ALONG N/S 1/4 LINE TO INTERSECTION OF SOUTH RAILROAD R/R LINE; THENCE S62-59-10E 37.04 TO COR; THENCE S62-59-10E 651.10 ALONG SOUTH RAILROAD R/W LINE TO PROPERTY COR.
 2006 COMBS CSM VOL 30 PG 291 FD R/R SPIKE N88-00-34W 2639.90 TO FD ALUM. @ NW COR SEC 17, SO-04-18E 991.36 ALONG N/S 1/4 LINE OF SEC 17 TO NE PROPERTY COR. PROPERTY IS 215.00 WIDE & R/W IS 50.03

ON MAY 15TH I WAS CONTACTED BY WIDOT PROJECT ENGINEER THE NIGHT BEFORE THE MONUMENT BOX WAS REMOVED. I ARRIVED THE NEXT MORNING AND FOUND THE MONUMENT BOX, PAVEMENT & SUBBASE WAS REMOVED. I FOUND SUNNY'S 1 1/2" DIAMETER PIPE WHICH WAS HIT & SLIGHTLY LEANING TO THE NORTH. THE PIPE WAS ABOUT 6" BELOW THE ROAD BASE AND 1.1 BELOW THE CENTER OF THE RR TRACK & CENTER OF THE ROAD. THE MONUMENT BOX AND REROD WERE GONE. I REFERENCED THE PIPE. LATER THAT DAY THE DEEP CUT WAS SUCH THAT ALL PHYSICAL MONUMENTS WERE REMOVED. ONCE THE ROAD SURFACE WAS REPLACED, I MARKED AND LOCATED THE PIPE LOCATION. I GAVE THEM IN CONCRETE THE PROJECT CONSULTANT AN ALUM. MON. WHICH THEY INSTALLED IN CONCRETE. THEY ALSO INSTALLED ALUM. DISKS IN CONCRETE FOR REFERENCE MONUMENTS. I VERIFIED THE LOCATION OF THE ALUM. MON. & MEASURED TO THEIR ALUM. REFERENCE MONUMENTS. I DRILLED A SMALL HOLE IN THE TOP OF THE ALUM. MON. THE MON. IS 3.7' WEST OF THE NEW CENTER OF PAVEMENT.

Donald Barnes
 10/02/08

CL544 S1/4CORSEC8

C) Was the corner restored through acceptance of (1) an obliterated evidence location, or, (2) a found perpetuated location?

I ACCEPTED THE FOUND PIPE. I USED MY TOWNSHIP REMONENTATION FIELD DATA TO COMPUTE THE LOCATION OF THE PIN IN THE MONUMENT BOX. THE PIN IN THE MONUMENT BOX LOCATION IS S2-14-03E 3.41' OF THE ALUM. MON. THE FOLLOWING BEARINGS AND DISTANCES ARE FOR THE ALUM. & PIN IN THE MON BOX.

§ 1/4 COR TO SW COR SEC 8
ALUM N88-04-40W 2639.68
PIN IN BOX N88-00-14W 2639.93

S 1/4 COR TO SE COR SEC 8
ALUM S87-54-07E 2644.33
PIN IN BOX S87-58-32E 2644.08

NORTH OF CENTER OF RR TRACK
19?? MAP #874 16.5'
1985 PIN/BOX J/K-7 12.67
ALUM 16.0
PIN/BOX 12.2

NORTH OF NORTH R/R RAIL
1966 BATTERMAN VOL 4 PG 252 9.32' PERPENDICULAR TO THE NORTH RAIL
1999 UNKNOWN #6526 10.35 NORTH OF NORTH R/R RAIL.

THE PIN IN THE BOX IS 0.65' NORTH OF A STRAIGHT LINE BETWEEN THE SW & SE CORNERS OF SEC 8. THE PIN IS 2.07' WEST OF THE MID POINT LOCATION.

THE ALUM. MON. IS 4.05' NORTH OF A STRAIGHT LINE BETWEEN THE SW & SE CORNERS OF SEC 8. THE ALUM. IS 2.32' WEST OF THE MID POINT LOCATION.

THE MID POINT IS 1.4 EAST OF THE CENTER OF THE PVMT. BOTH THE FD PIPE AND THE FD PIN IN THE MONUMENT BOX MEET THE STANDARDS AND PRACTICES OF THE TIME WHICH BOTH MONUMENT THE INTENT OF PLACING IT ON A STRAIGHT LINE AND MIDWAY BETWEEN THE SW AND SE CORNERS OF SEC 8.

Donald Barnes
10/02/08

SHEET 4 OF 6
CORNER CODE J-7(2)

D) Describe any material discrepancy between the location of the corner as restored or reestablished and the location of that corner as previously restored or reestablished by distance and direction. Show the discrepancy on the plan view drawing under (a), above. Show the distances between the corner as previously restored or reestablished and (1) the corner as restored or reestablished, and (2) to at least 4 of the witness monuments shown on the drawing in (a), above.

THERE IS A MATERIAL DISCREPANCY BETWEEN THE MONUMENTS OF RECORD. I BELIEVE THE CORNER HISTORY SUPPORTS THE LOCATION OF THE PIN IN THE MONUMENT BOX AS THE POSITION ESTABLISHED BY BATTERMAN IN 1954.

I BELIEVE THE CORNER HISTORY SUPPORTS THE LOCATION OF THE ALUM. MON. AS THE LOCATION OF THE WOOD STAKE FOUND BY BATTERMAN IN 1930. THE PRE 1930 RECORDS CALL FOR THE CORNER AS ON A LINE BETWEEN THE SW & SE CORNERS OF SEC 8 AT MIDPOINT. ALSO THE RECORDS CALL FOR THE CORNER AS 16.5' NORTH OF THE CENTER OF THE RR TRACKS. THE ALUM IS 16.0' AND THE PIN IN THE BOX WAS 12.3'.

(E) Was the corner reestablished through lost corner proportionate methods? If so, show the method, including the directions and distances to other public land survey corners used as evidence or used for proportioning the corner location.

ORIGINALLY IT WAS REESTABLISHED AS LOST IN 1881 BY LEE AS STATED IN VOL 2 PG 320 & MAP #876.

I, **Donald Barnes**, hereby certify that the corner location as identified by the corner code index was determined by me under my direction and control and that this U.S. Public Land Survey Monument Record is correct and complete to the best of my knowledge and belief.

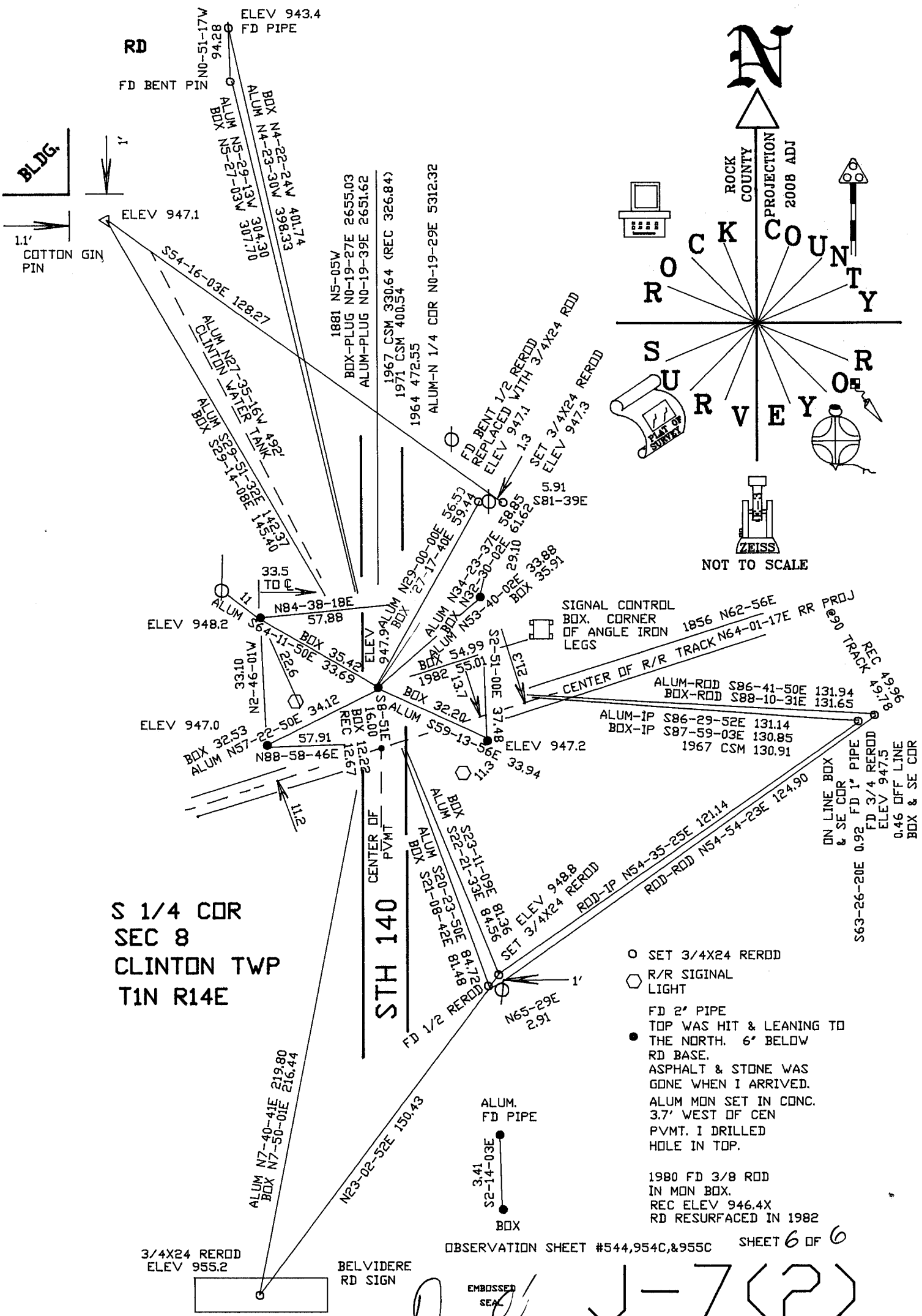
Seal

Donald Barnes
10/02/08
EUBOSS

SHEET 5 OF 6

CORNER CODE **J-7(2)**

A.E. 7.08 REQUIREMENT



S 1/4 COR
 SEC 8
 CLINTON TWP
 T1N R14E

STH 140

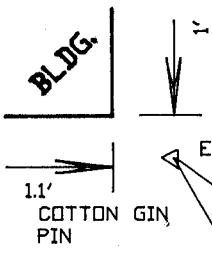
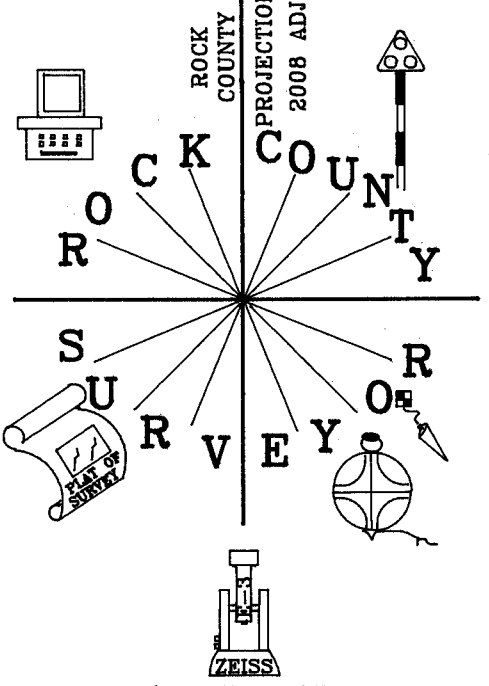
- SET 3/4X24 REROD
- ◻ R/R SIGNAL LIGHT
- FD 2" PIPE
 TOP WAS HIT & LEANING TO THE NORTH. 6' BELOW RD BASE. ASPHALT & STONE WAS GONE WHEN I ARRIVED. ALUM MON SET IN CONC. 3.7' WEST OF CEN PVMT. I DRILLED HOLE IN TOP.
- 1980 FD 3/8 ROD IN MON BOX. REC ELEV 946.4X RD RESURFACED IN 1982

OBSERVATION SHEET #544,954C,&955C SHEET 6 OF 6

Donald Barnes
 10/02/08

J-7(2)

NOT TO SCALE



RD
 FD BENT PIN
 ELEV 943.4
 FD PIPE
 NO-51-17W 94.28
 ALUM N4-22-24W 401.74
 BDX N4-23-30W 398.33
 ALUM N5-29-13W 304.30
 BDX N5-27-03W 307.70
 ELEV 947.1
 554-16-03E 128.27
 ALUM N27-35-16W 499.7
 CLINTON WATER TANK
 ALUM S29-51-32E 142.37
 BDX S29-14-08E 145.40
 1881 N5-05V
 BDX-PLUG N0-19-27E 2655.03
 ALUM-PLUG N0-19-39E 2651.62
 1967 CSM 330.64 (REC 326.84)
 1971 CSM 400.54
 1964 472.55
 ALUM-N 1/4 COR N0-19-29E 5312.32
 FD BENT 1/2 REROD REPLACED WITH 3/4X24 RD
 ELEV 947.1
 1.3
 SET 3/4X24 REROD
 ELEV 947.3
 5.91
 S81-39E
 SIGNAL CONTROL BOX. CORNER OF ANGLE IRON LEGS
 1856 N62-56E
 CENTER OF R/R TRACK N64-01-17E RR PROJ
 REC 491.98
 TRACK
 ALUM-RDD S86-41-50E 131.94
 BDX-RDD S88-10-31E 131.65
 ALUM-IP S86-29-52E 131.14
 BDX-IP S87-59-03E 130.85
 1967 CSM 130.91
 ELEV 947.2
 33.94
 11.3
 37.48
 S2-51-00E
 31.7
 1982 55.01
 ALUM N34-23-37E 56.50
 BDX N32-30-02E 59.44
 ALUM N53-40-02E 29.10
 BDX 33.88
 BOX 33.91
 ELEV 947.0
 BDX 32.53
 ALUM N57-22-50E 57.91
 N88-58-46E
 REC 12.67
 S8-51E
 16.00
 BDX 12.22
 CENTER OF PVMT
 S23-02-52E 150.43
 ALUM N7-40-41E 219.80
 BDX N7-50-01E 216.44
 3/4X24 REROD
 ELEV 955.2
 BELVIDERE RD SIGN
 3.41
 S2-14-03E
 BOX
 ALUM. FD PIPE
 1.1'