

Paper weight-110# (minimum)

Black nonfading ink required

# U.S. PUBLIC LAND SURVEY MONUMENT RECORD

For Public Land Survey Corners In:

WI ADMINISTRATIVE CODE A-E 7.08 REQUIREMENT

T. 4 N. R. 11 E. 4th P.M.

REV 10/23/2004

USMONREC.DWG

CORNER CODE INDEX

**PORTER** TWP

**ROCK COUNTY WI**

IF AVAILABLE

ROCK COUNTY COORDINATES PREFERRED

North \_\_\_\_\_ Elev. \_\_\_\_\_

East \_\_\_\_\_

Hor. Datum \_\_\_\_\_ Vert. Datum \_\_\_\_\_

LATITUDE \_\_\_\_\_ ELLIPS. HT. \_\_\_\_\_

LONGITUDE \_\_\_\_\_

NAD83(91) \_\_\_\_\_ NETWORK ADJ. YR \_\_\_\_\_

GPS (X) \_\_\_\_\_ TRAVERSE (X) \_\_\_\_\_

BASED ON THE FOLLOWING CONTROL:

A	1	2	3	4	5	6	7	8	9	10	11	12	13	14	15	16	17	18	19	20	21	22	23	24	25	A
B																										B
C																										C
D																										D
E																										E
F																										F
G																										G
H																										H
J																										J
K																										K
L																										L
M																										M
N																										N
O																										O
P																										P
Q																										Q
R																										R
S																										S
T																										T
U																										U
V																										V
W																										W
X																										X
Y																										Y
Z																										Z

1 2 3 4 5 6 7 8 9 10 11 12 13 14 15 16 17 18 19 20 21 22 23 24 25  
PLACE MONUMENT SYMBOL  AT PROPER LOCATION ON ABOVE INDEX

CORNER MONUMENT

WITNESS MONUMENT

(a)

BEARINGS ARE BASED ON: \_\_\_\_\_

FIELD BOOK \_\_\_\_\_ PAGE # \_\_\_\_\_

SHEET 1 OF 2

SHOW A PLAN VIEW DRAWING DEPICTING THE CORNER MONUMENT AND SURROUNDING PHYSICAL FEATURES, INCLUDING THE EXCAVATION AREA AND DEPTH.

PLANNING & ZONING COMMITTEE ADOPTED THIS FORM ON 12/2/1982

CORNER CODE 5-7(1)

P0544

S1/4CORSEC8

(B) Describe any record evidence, monument evidence, occupational evidence, testimonial evidence or any other material evidence you considered, and whether the monument was found or placed.

1833 (NOV) HARRISON T4N R11E 4<sup>TH</sup> MER. EAST ON RAND. BET. B & 17

2640.0 TEMPY 1/4 SEC COR.  
5313 INT. E BDY 26.4' NORTH OF POST  
LAND 1<sup>ST</sup> RATE ROLLING PRAIRIE SOIL GOOD-  
GROWTH GRASS AND WEEDS  
WEST COR. WEST BET. SECS 8 & 17  
2656.50 QUARTER SEC. COR. {SET POST & RAISED A  
MOUND OF EARTH & SOD  
5313.00 SEC COR.

- 1870 RUGER VOL 2 PG 25 CORNER LOST ESTABLISHED IT FROM SECTION CORNERS SET POINTED LIMESTONES & SURROUNDED IT WITH 4 HARD HEAD STONES. 2685.70 TO SW COR SEC 8, 1342.85 TO POINTED LIMESTON 15X8X4 @ S 1/16TH COR SE 1/4 COR SEC 8, & 2685.71 TO SE COR SEC 8. USED TO SUBDIVIDE SEC 8.
- 1895 BROWN VOL 2 PG 496 STATES NOTHING ABOUT MON. USED TO SUBDIVIDE SEC 17 2692.47 TO NE COR SEC 17, 1342.66 TO HH 13X12X6 @ N 1/16TH COR OF NW 1/4 SEC 17, 2685.32 TO NW COR SEC 17.
- 1978 BARNES VOL 5 PG 495 FD LIMESTONE 4X7X17 SURROUNDED BY HH. THE TELEPHONE CABLE IS DIRECTLY UNDER THE CORNER. REPLACED THE LS WITH AN ALUM. MON. & REFERENCED SAME.
- 1978 THOM CSM 8-212 FD ALUM. S00-09-30W 2665.61 TO SET IP @ CENTER OF SEC 17. FROM CENTER TO FD ALUM @ S 1/4 COR SEC 17 IS S00-08-30W 2633.38
- 1980 KARNs CSM 10-215 FD ALUM.
- 1984 COMBS CSM 11-620 FD ALUM. USED TO SUBDIVIDE SEC 8. 2657.09 TO SET R/R SPIKE @ CENTER OF SEC 8
- 1987 BARNES FB #2 PG 61 & 64 FD ALUM. MON & REFERENCE PIPES. SOLAR OBSERVATION.
- 1992 KARNs CSM 15-517 ROCK COUNTY MON.
- 1997 KARNs CSM 14-465 FD ALUM. N88-58-00E TO ALUM @ SE COR SEC 8, N0-40-53W ALONG SEC N/S 1/4 OF SEC 8
- 2003 KARNs #14565 FD ROCK COUNTY SEC COR. S00-09-08E TO ROCK COUNTY @ S 1/4 COR SEC 17

FD ALUM. 0.1' DEEP & 3.0' EAST OF CENTER OF PVMT.

C) Was the corner restored through acceptance of (1) an obliterated evidence location, or, (2) a found perpetuated location?

ACCEPTED PERPETUATED LOCATION.

D) Describe any material discrepancy between the location of the corner as restored or reestablished and the location of that corner as previously restored or reestablished by distance and direction. Show the discrepancy on the plan view drawing under (a), above. Show the distances between the corner as previously restored or reestablished and (1) the corner as restored or reestablished, and (2) to at least 4 of the witness monuments shown on the drawing in (a), above.

NONE

(E) Was the corner reestablished through lost corner proportionate methods? If so, show the method, including the directions and distances to other public land survey corners used as evidence or used for proportioning the corner location.

YES. RUGER DECLARED IT LOST.

I, **Donald Barnes**, hereby certify that the corner location as identified by the corner code index was determined by me under my direction and control and that this U.S. Public Land Survey Monument Record is correct and complete to the best of my knowledge and belief.

Seal  
Aug 18 2009  
15115055  
Donald Barnes

SHEET 1 OF 2

CORNER CODE J-7 (1)

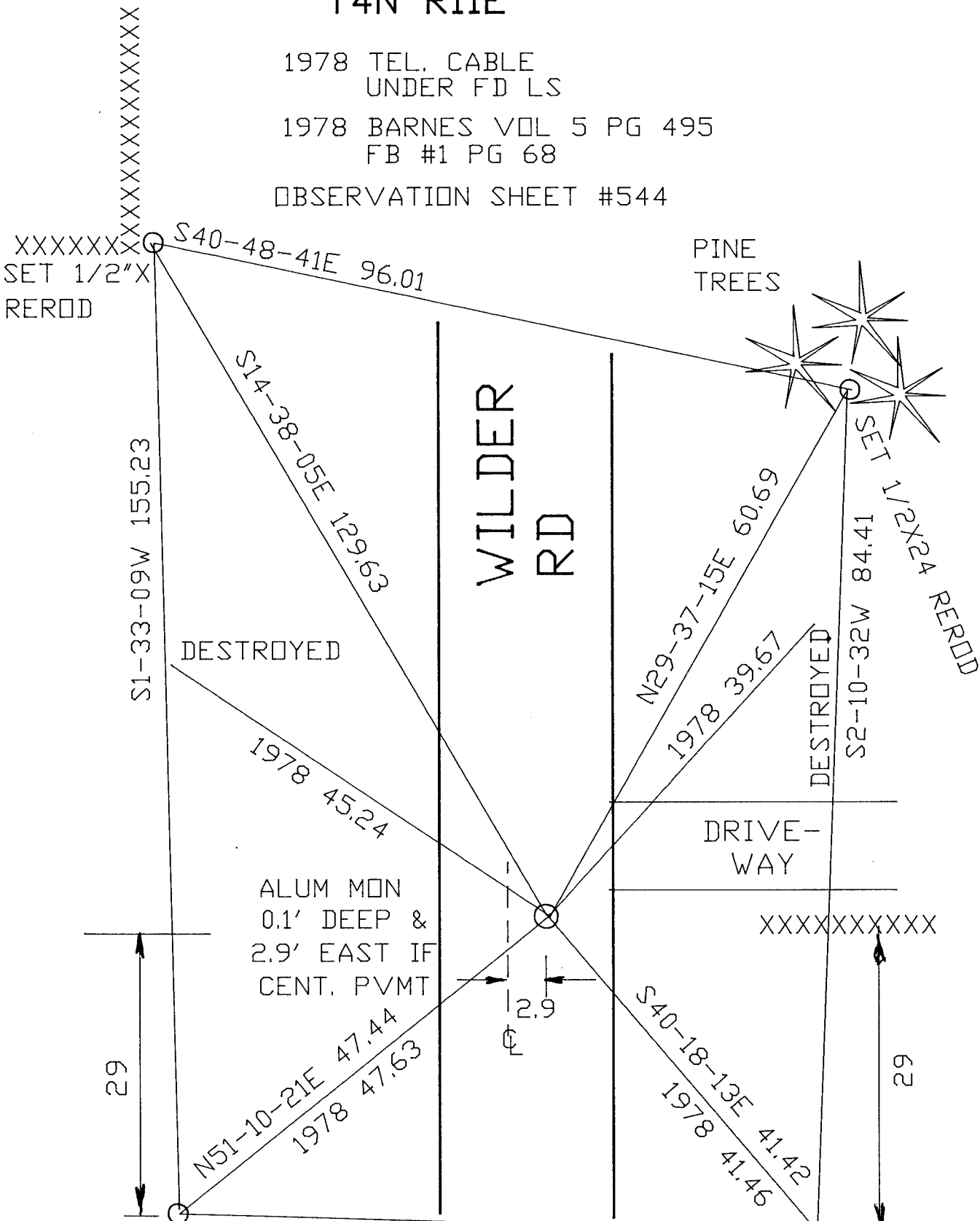
A.E. 7.08 REQUIREMENT

N 1/4 COR  
 SEC 17  
 PORTER TWP  
 T4N R11E

1978 TEL. CABLE  
 UNDER FD LS

1978 BARNES VOL 5 PG 495  
 FB #1 PG 68

OBSERVATION SHEET #544



FD BENT PIPE  
 REPLACED WITH  
 1/2X24 REROD

1978 63.93  
 S88-20-35E 63.78

*Donald Barnes*  
 Aug 18, 2009

J-7(1)  
 2 OF 2