

Paper weight-110# (minimum)

Black nonfading ink required

U.S. PUBLIC LAND SURVEY MONUMENT RECORD

For Public Land Survey Corners In:
T. 4 N. R. 11 E. 4th P.M.

WI ADMINISTRATIVE CODE A-E 7.08 REQUIREMENT
REV 10/23/2004 USMONREC.DWG

CORNER CODE INDEX

A	1	2	3	4	5	6	7	8	9	10	11	12	13	14	15	16	17	18	19	20	21	22	23	24	25	A
B		6				5					4				3					2				1		B
C																										C
D																										D
E																										E
F																										F
G																										G
H																										H
J																										J
K																										K
L																										L
M																										M
N																										N
O																										O
P																										P
Q																										Q
R																										R
S																										S
T																										T
U																										U
V																										V
W																										W
X																										X
Y																										Y
Z																										Z

PLACE MONUMENT SYMBOL AT PROPER LOCATION ON ABOVE INDEX

PORTER TWP
ROCK COUNTY WI

IF AVAILABLE
ROCK COUNTY COORDINATES PREFERRED

North _____ Elev. _____

East _____

Hor. Datum _____ Vert. Datum _____

LATITUDE _____ ELLIPS. HT. _____

LONGITUDE _____

NAD83(91) _____ NETWORK ADJ. YR _____

GPS (X) _____ TRAVERSE (X) _____

BASED ON THE FOLLOWING CONTROL:

CORNER MONUMENT

WITNESS MONUMENT

BEARINGS ARE BASED ON: _____

FIELD BOOK _____ PAGE # _____

SHEET 1 OF 4

SHOW A PLAN VIEW DRAWING DEPICTING THE CORNER MONUMENT AND SURROUNDING PHYSICAL FEATURES, INCLUDING THE EXCAVATION AREA AND DEPTH.

PLANNING & ZONING COMMITTEE ADOPTED THIS FORM ON 12/2/1982

CORNER CODE E-25

PO533

SE-COR-SEC1

(B) Describe any record evidence, monument evidence, occupational evidence, testimonial evidence or any other material evidence you considered, and whether the monument was found or placed.

1833 (SEP 20) MULLETT & BRINK NORTH ON EAST SIDE SEC 12 T4N R11E

- 957 ENTER PRAIRIE
- 1538.46 INDIAN PATH @ NW & SE
- 2131.8? LEAVE PRAIRIE
- 2180.64 BURR OAK 10 IN DIAMETER
- 2640 SET QUARTER SECTION POST BUR OAK 18 S23W 9.9' BUR OAK 10 N4 1/4W 165'
- 3993.66 BUR OAK 10 IN DIAMETER
- 5280 SET POST CORNER SECTIONS 1 & 12 BLACK OAK 8 S 1 1/2 W 55.44' BUR OAK 8 N57W 9.9' LAND ROLLING SECOND RATE FIRST 1/2 SOME PRAIRIE LAST 1/2 TIMBERED WITH WHITE BLACK AND BUR OAK

1833 (SEP 20) MULLETT & BRINK NORTH ON EAST SIDE SECTION 1

- 1372.14 BUR OAK 12 IN DIAMETER
- 2640 SET QUARTER SECTION POST BUR OAK 14 S19W 22.44' BUR OAK 12 N4N 48.18'
- 5280 SET POST CORNER TO TOWNSHIPS 4 & 5 N RANGES 11 & 12E BEARINGS {BUR OAK 12 N33E 24.42' BUR OAK 16 N77W 3.3'} MARKED {BUR OAK 18 S26E BUR OAK 18 S62W LAND LEVEL FIRST

1833 (OCT 30) HARRISON EAST ON RANDOM BET SECS 1 & 12 T4N R11E 4TH MER.

- 2640 TEMPY QUARTER SEC COR.
- 5332.8 INT. E BDY 39.6' N OF P LAND ROLLING 2ND RATE THINLY AND BADLY TIMBERED WITH SMALL RED & BURR O ? ? GRASS & WEEDS
COR WEST BET SECS 1 & 12
- 2666.4 QUARTER SEC COR. {BURR O 8 S58E 91.08' BURR O 10 N38E 105.6' BURR O 8 BURR O 10} MARKED
- 5332.8 INT SEC COR.

1834 (APR 4) HARRISON WEST ON RAND. BET SECS 6 & 7

- 2640 TEMPY 1/4 SEC COR.
- 5316.3 INT. W. BDY 29.7' N OF P LAND ROLLING 2ND RATE TIMBER ALL BURR O. UNDERGROWTH ? GRASS & WEEDS
COR. EAST
- 2676.3 QUARTER SEC COR. {BURR O 12 S80W 26.4' RED O. 10 N54E 76.56' BURR O 12, RED O 20} MARKED
- 4579.74 BURR O 12 IN DIAMETER
- 5316.3 SEC COR.

IN THE EARLY 1970S, TOM SPRAGUE PUBLISHED HIS MANUAL FOR ESTABLISHING AND PERPETUATING THE ORIGINAL GOVERNMENT SURVEY IN WISCONSIN. IN PAGE 25 HE STARTS THE COPY OF THE GENERAL INSTRUCTIONS TO HIS DEPUTIES; BY THE SURVEYOR GENERAL OF THE UNITED STATES, FOR THE STATES OF OHIO AND INDIANA, AND THE TERRITORY OF MICHIGAN, WHICH IS DATED 1833 IN CINCINNATI. ON PAGE 42 AND 43 HE STATES "SECTION 3 READ AS FOLLOWS BEFORE AN INK DELETION APPARENTLY MADE IN 1839; (IN CLOSING OUT THE SECTION LINES TO THE NORTH AND WEST BOUNDARIES OF THE TOWNSHIP, UNLESS THE SECTION LINES INTERSECT THE BOUNDARIES AT THE SECTION CORNERS THEREON ESTABLISHED FOR THE ADJOINING TOWNSHIPS, YOU MUST SET A POST, AND TAKE BEARING TREES AT EACH SUCH INTERSECTION, AND MEASURE AND NOTE THE DISTANCE TO THE POSTS PREVIOUSLY SET FOR THE ADJOINING TOWNSHIP, AND ON

SHEET 1 OF 4
CORNER CODE E25

Donald Barnes
4-02-89

PO533 SE-COR-SEC1

- WHICH SIDE OF SUCH POSTS. BUT WHERE-EVER THE CLOSING LINES OF THE SECTIONS, INTERSECT AT THE POSTS ON THE NORTH AND WEST BOUNDARIES, SUCH POSTS BECOME COMMON FOR THE SECTIONS ON BOTH SIDES OF THE TOWN BOUNDARY.]
- 1847 TWP RD REC BK 1 PG 10 ALSO A RD, THE CENTER LINE OF WHICH IS DESCRIBED AS FOLLOWS TO WIT: PLACE OF BEGINNING IS THE QUARTER SECTION POST BETWEEN SECTION 5 & 8 IN T4N R12E FROM SAID POST RUN ON SECTION LINE S81-15W 957' THENCE S54W 858', THENCE N83-45W 1130.58' TO SEC COR [NW COR SEC 8] THEN ON SECTION LINE BETWEEN 6 & 7 S81-15W 5315.64' TO THE TOWN LINE, MAKING 8261.22'. IN WITNESS WHEREOF WE HAVE HERE UNTO SET OUR HANDS AT FULTON ON THE 12 DAY OF OCT. 1847 GOODRICH, PHILIP & DAVOLT MARK COMMISSIONER OF HIGHWAYS.
- 1847 PIERCE TWP RD BK 1 PG 10 SURVEYED JUNE 2ND 1847 A RD THE CENTER LINE OF WHICH IS DESCRIBED AS FOLLOWS TO WIT; PLACE OF BEGINNING IS THE 1/4 SEC POST BETWEEN SEC 5 & 8 IN T4 OF R12 FROM SAID POST, RUN ON SEC. LINE S81-15W 957.00' THEN S54W? 858' THEN N83-45W 1130.58' TO SEC COR [NW COR SEC 8], THE ON SEC LINE BETWEEN 6 & 7 S81-15W 5315.64' TO THE TOWN LINE MAKING 8,261.22'.
- 1871 RUGER VOL 2 PG 63 FD OLD STAKE & STUMP OF SW BT (SHOULD READ S10-1/2W INSTEAD OF S 1-1/2W) & WHERE STUMP OF N.W. BT HAD BEEN DUG UP DROVE STAKE DEEP & PUT ON TOP OF IT LIMESTONE 14X6X5 SURROUNDED IT WITH 4 HH STONES. CORNER IS ABOUT 3.96' SOUTH OF E/W FENCE & 26.4' EAST OF FENCE ON WEST SIDE OF RD. W 1/4 COR SEC 7 DECLARED LOST, VAR 7-27 FROM W 1/4 COR TO NW & SW CORNERS SEC 7.
- 1871 RUGER VOL 2 PG 79 & #1069 SEE SEC 12 PG 39 VAR 7-25 2672.34 TO N 1/4 COR SEC 7. SEE SEC 12 PORTER TWP PG 39
- 1876 RUGER #1069 VAR 7-27 2672.34 TO N 1/4 COR SEC 7
- 1886 RUGER VOL 2 PG 284 FD LIMESTONE SURROUNDED BY 4 HH STONES. VAR 5-45 2537.7 TO S 1/4 COR SEC 6 & VAR 5-30 2659.30 TO W 1/4 COR SEC 1
- 1934 DOT #3901, 13300, 13302, 13301 STATES NOTHING ABOUT MON. SHOWS ANGLE OF 90-10 @ SW COR SEC 6 FROM SOUTH LINE OF SEC 6 TO WEST LINE OF SEC 7
- 1965 BATTERMAN VOL 4 PG 223 PK NAIL BY WP&L. WP&L 2642.9X TO E 1/4 COR SEC 12 PORTER TWP, WP&L 1270.20 TO HH SURROUNDED BY 4 HH @ N 1/16TH COR OF NE 1/4 OF SEC 12 PORTER TWP. WPL 2540.4X TO FD LS. 18X6X5 @ N 1/4 SEC 12 PORTER TWP
- 1966 BATTERMAN VOL 4 PG 256 DUG 6/1/66 FD LS SURROUNDED HHS 2.1' DEEP. PLACED BOLT @ COR & REF SAME.
- 1967 BATTERMAN VOL 4 PG 355 DUG & FOUND STONES AS DESCRIBED IN RECORDS. REF. SAME. @ INT. OF STH 59 & HARTZE RD.
- 1971 LEE CSM VOL 2 PG 67 STATES NOTHING ABOUT MON.
- 1981 BARNES VOL 6 PG 211 FD 1" IP & REPLACED WITH ALUM. MON. FD REC SPIKE 44.18 NW IN UP & REC NAIL 11.50 TO THE SOUTH.
- 1985 SHROEDER CSM VOL 12 PG 213 STATES NOTHING ABOUT MON.
- 1989 NORTHROP CSM VOL 13 PG 543 ALUM. MON. NOO-15-00E 2659.35 TO LS @ E 1/4 COR SEC 1
- 1990 LEE CSM VOL 15 PG 1 STATES NOTHING ABOUT MON. NORTH1329.05 TO RR ON SEC LINE

*Reginald
Bacon*

4-0209

PO533 SE-COR-SEC1

- 1992 NORTHROP CSM VOL 15 PG 475 2679.03 TO N ¼ COR
SEC 7 & ANGLE 89-50-36 @ N ¼ COR SEC 7 FROM S ¼
COR SEC 7 TO NW COR SEC 7
- 1994 NORTHROP #9491 2679.03 SW COR SEC 6 TO S ¼
COR SEC 6, ANGLE OF 91-10-35 @ S ¼ COR SEC 6 FROM SW
TO N ¼ COR SEC 6. ALUM MON.
- 2000 NORTHROP CSM VOL 24 PG 45 & 87 ALUM. 2679.02 TO N
¼ COR SEC 7 & ANGLE 90-22-23 @ NW COR SEC 7 FROM N
¼ COR SEC 7 TO W ¼ COR SEC 7
- 2003 LATHROP CSM VOL 27 PG 47 FD ALUM. 2659.29 TO R/R
SPIKE @ E 1/4 COR SEC 1
- 2007 BARNES E-1 FD ALUM. MON. ACCEPTED FD ALUM. MON. IT
PERPETUATES THE ORIGINAL GOV. MON.

FD ALUM. MON.

C) Was the corner restored through acceptance of (1) an obliterated evidence location, or, (2) a found perpetuated location?

ACCEPTED FD ALUM. MON.

(E) Was the corner reestablished through lost corner proportionate methods? If so, show the method, including the directions and distances to other public land survey corners used as evidence or used for proportioning the corner location.

NO

I, **Donald Barnes**, hereby certify that the corner location as identified by the corner code index was determined by me under my direction and control and that this U.S. Public Land Survey Monument Record is correct and complete to the best of my knowledge and belief.

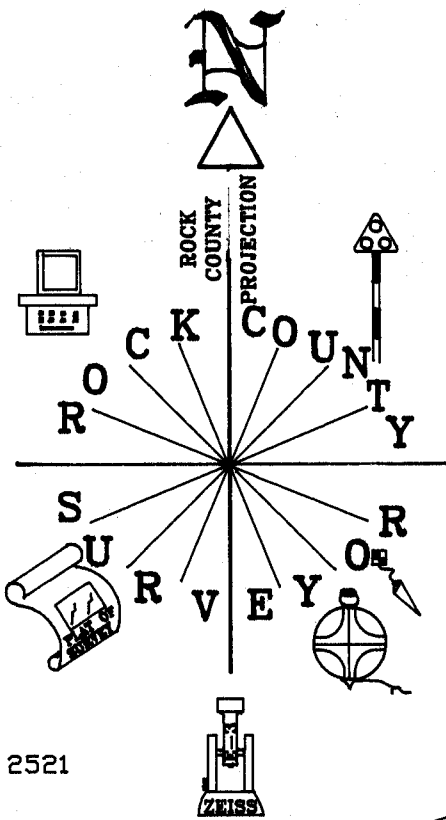
Seal
Donald
Emboss
Barnes
4-02-09

SHEET 3 OF 4

CORNER CODE

E-25

A.E. 7.08 REQUIREMENT

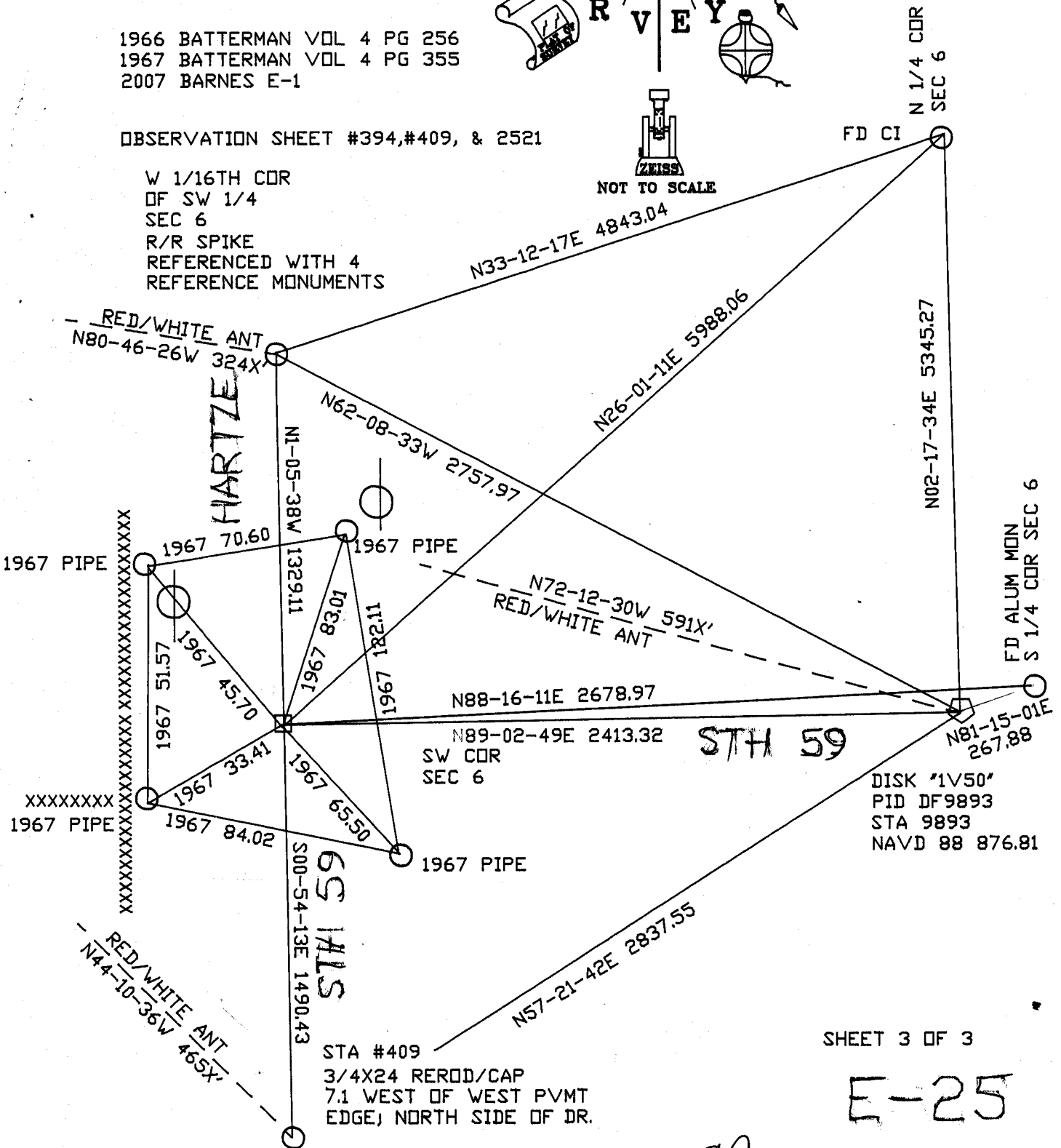


1966 BATTERMAN VOL 4 PG 256
 1967 BATTERMAN VOL 4 PG 355
 2007 BARNES E-1

OBSERVATION SHEET #394, #409, & 2521

W 1/16TH COR
 OF SW 1/4
 SEC 6
 R/R SPIKE
 REFERENCED WITH 4
 REFERENCE MONUMENTS

NOT TO SCALE



SHEET 3 OF 3

E-25

4-2-2009
Donald Barnes