



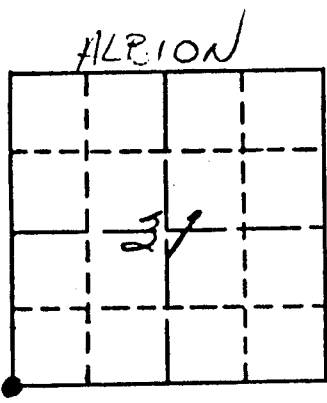
corner after measurement from the SE corner of Sec. 36 was found to agree with an 1874 resurvey by the Rock County Original County Surveyors Records. Dist. measured 80.70 chains compared to Reger's 80.69 chains.

Registered Land Surveyor - Number S 782

NUMBER 7-21

**GOVERNMENT CORNER REFERENCE**  
Dane County, Wisconsin

Government corner 36 | 31  
 Township 5 North  
 Range 12 East  
 Date of survey April 24, 1965  
 Fieldbook 411 / 21



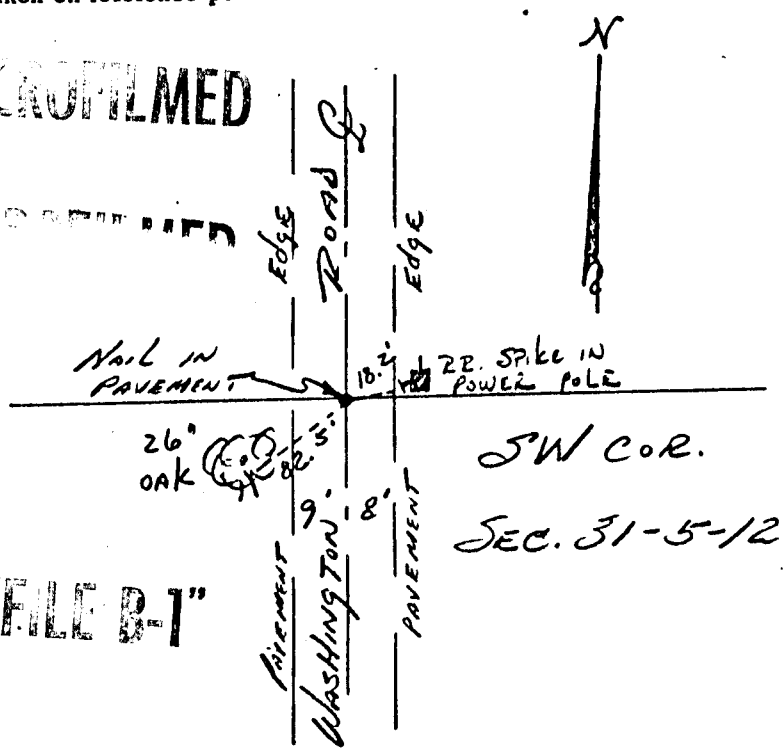
LOCATION SKETCH

This space for drawing of corner showing type of Monument set, distance and direction of reference monument, a note if distances are not measured on a horizontal plane, and where measurement is taken on reference point.

MICROFILMED

PAID FOR BY THE STATE

"FILE B-1"



**SURVEYORS AFFIDAVIT** (Surveyor must certify the method by which the above described corner STATE OF WISCONSIN } has been located or relocated.)  
 COUNTY OF DANE } ss

I hereby certify that THE ABOVE CORNER WAS SET BY THE USE OF AERIAL PHOTOGRAPHY.

Registered Land Surveyor - Number S

CORNER NUMBER 225  
DUNKIRK

~~SEC 6 FULTON~~ ~~B-FILE~~ SEC 2 PORTER TWP  
 MAP#