

Paper weight-110# (minimum)

Black nonfading ink required

U.S. PUBLIC LAND SURVEY MONUMENT RECORD

For Public Land Survey Corners In:
T. 4 N. R. 11 E. 4th P.M.
CORNER CODE INDEX

WI ADMINISTRATIVE CODE A-E 7.08 REQUIREMENT
REV 10/23/2004 USMONREC.DWG

A	1	2	3	4	5	6	7	8	9	10	11	12	13	14	15	16	17	18	19	20	21	22	23	24	25	A
B			6				5					4				3				2				1		B
C																										C
D																										D
E																										E
F																										F
G																										G
H																										H
J																										J
K																										K
L																										L
M																										M
N																										N
O																										O
P																										P
Q																										Q
R																										R
S																										S
T																										T
U																										U
V																										V
W																										W
X																										X
Y																										Y
Z																										Z

PORTER TWP
ROCK COUNTY WI

IF AVAILABLE
ROCK COUNTY COORDINATES PREFERRED

North _____ Elev. _____

East _____

Hor. Datum _____ Vert. Datum _____

LATITUDE _____ ELLIPS. HT. _____

LONGITUDE _____

NAD83(91) _____ NETWORK ADJ. YR _____

GPS (X) _____ TRAVERSE (X) _____

BASED ON THE FOLLOWING CONTROL:

◆ CORNER MONUMENT ○ WITNESS MONUMENT

BEARINGS ARE BASED ON: -----

FIELD BOOK _____ PAGE # _____

SHEET 1 OF 3

SHOW A PLAN VIEW DRAWING DEPICTING THE CORNER MONUMENT AND SURROUNDING PHYSICAL FEATURES, INCLUDING THE EXCAVATION AREA AND DEPTH.

PLANNING & ZONING COMMITTEE ADOPTED THIS FORM ON 12/2/1982

CORNER CODE P-25

PO580 E1/4CORSEC24

(B) Describe any record evidence, monument evidence, occupational evidence, testimonial evidence or any other material evidence you considered, and whether the monument was found or placed.

1833 (SEP 26) MULLETT & BRINK NORTH ON EAST SIDE OF SECTION 24 T4N R11E

2640 SET QUARTER SECTION POST BUR OAK 18 S61W 60.72' BUR OAK 20 N26W 110.22'

3762 TRAIL @ NW

3810.84 BUR OAK 14 IN DIAMETER

5280 SET POST CORNER SECTIONS 13 & 24 BUR OAK 12 N83W 54.12' BLACK OAK 10 S12W 51.48' LAND ROLLING SECOND RATE FIRST HALF ON WEST SIDE OF LINE PRAIRIE EAST SIDE TIMBERED WITH WHITE BLACK AND BUR OAK ELM AND WHITE MAPLE LAST 1/2 TIMBERED WITH WHITE AND BLACK & BUR OAK.

1850 STEBBINS TWP REC BK 1 PG 14 BEGINNING AT THE 1/4 POST ON THE WEST LINE OF SEC 19 T4N R12E; THENCE SOUTH ON SEC LINE 561'; THENCE S29 1/2E 1501.5'; S49E 594' TO CENTER OF WEST END OF STONES BRIDGE; THENCE BEGINNING AT THE CENTER OF THE EAST END OF SAID BRIDGE S13W 660' S7 1/4E 1155' TO BLACK OAK 24 INCHES IN DIAMETER. S28E 1155' TO BLACK OAK 24 INCHES IN DIAMETER. S28E 1160.94'; S21E 1415.7'; S39E 1075.14'; S54E 556.38' TO BURR OAK, S32E 1171.5' TO STAKE IN FRONT OF ELYAK TRUES HOUSE, SOUTH 320.1' TO THE LINE BETWEEN FRACTION 5 & 6 OF SEC 31; EAST ON SAID LINE 924'; SOUTH W1 1/2E. 2376'; S5E 1158.3' TO BLACK OAK; S1 1/2 E 534.6' TO THE TOWN LINE ON THE SOUTH LINE OF SE 32. WHOLE LENGTH OF RD 15,164.16' COURSE ACCORDING TO THE TRUE MERIDIAN VARIATION OF NEEDLE 7 3/4

1854 TWP REC BK 1 PG 29 BEGINNING AT THE QUARTER POST ON THE WEST LINE OF SEC 19 T4N R12E; THENCE RUNNING SOUTH ON THE SECTION LINE 1337.82'; THENCE EAST 446.82'; THENCE S18 1/2W 396'; THENCE S3W 264' TO RED OAK TREE; THENCE S17 3/4W 264' TO BURR OAK; THENCE S1E 764.94'; THENCE S11W 502.92' TO BURR OAK TREE; THENCE S6 3/4W 326.04; THENCE S17E 1158.3'; THENCE S30 3/4W 741.84'; THENCE S41 3/4W 1247.4'; THENCE TO THE WEST LINE OF T4N R12E; THENCE SOUTH ON THE TOWN LINE 766.92'; THENCE S42 1/4W 924'; THENCE S3 1/4W 198'; THENCE S 32 1/2E 1013.1 TO THE WEST LINE OF TOWN 4N R 12E, THENCE SOUTH ON THE TOWN LINE 4746.06' TO THE SOUTH WEST COR OF SEC 31 OF T4N R12E. THESE COURSES ARE ACCORDING TO THE TRUE MERIDIAN. VARIATION 7 3/4. " " " " ROAD TO BE A PUBLIC HIGHWAY 66' WIDE.

1854 TWP RD REC PORTER TWP BK 1 PG 6 BEGINNING AT THE 1/4 POST ON THE WEST LINE OF SEC 19 T4N R12E (STH 184); THENCE RUNNING SOUTH ON THE SECTION LINE 1337.82'; THENCE EAST 446.82'; THENCE S18 1/2E 396'; THENCE S3W 264' TO RED OAK TREE; THENCE S17 3/4W 264' TO BURR OAK; THENCE S1E 764.94'; THENCE S11W 502.92' TO BURR OAK TREE; THENCE S6 3/4W 326.04'; THENCE S17E 1158.3'; THENCE S30 3/4W 741.84'; THENCE S41 3/4W 1247.4' TO THE WEST LINE OF T4N R12E (THENCE SOUTH ON THE TOWN LINE 766.92', THENCE S42 1/2W 924'; [SEC 30 FULTON] THENCE S3 1/4W ? CHAINS; THENCE S32 1/2E 1013.1' TO THE W. LINE OF T4N R12E; THENCE S. ON THE TOWN LINE 4746.06' TO THE SW COR OF SEC 31 OF T4N R12E).

1875 RUGER VOL 2 PG 200 FD OLD STAKE AT COR. ALSO FD NW BT & STUMP OF SW BT DROVE NEW STAKE IN PLACE OF OLD ONE & SURROUNDED IT BY 1 LIME & 3 HH STONES. 2640 TO NW COR SEC 19, VAR 6-05 2646.6 TO SW COR SEC 19.

SEARCHED
INDEXED
SERIALIZED
FILED
Barnes

APR 28, 2010

PO580 E1/4CORSEC24

- 1880 LEE VOL 2 PG 315 FD STAKE & STONES SET BY RUGER
1875. VAR 5-48 2655.18 TO SW COR SEC 19, (EASTERLY)
VAR 7-30 1312.41 TO LIMESTONE 23X3X4 1/2 NEAR WEST
BANK OF ROCK RIVER
- 1966 BATTERMAN VOL 4 PG 293 FD STAKE SURROUNDED BY
HARDHEADS AND LIMESTONES SET BY RUGER SEE VOL 2 PG
200. REF. SAME. CENTER OF E/W PVMT & WEST OF STH 184.
- 1970 DOT #7439 PROJ E-0624(1) SHOWS SAME TIES AS IN VOL 4
PG 293. CALLS FOR A 1" PIPE. CORNER IS SHOWN WEST OF
THE WEST N/S PVMT EDGE & @ THE CENTER OF THE E/W
PVMT
- 1975 DOT VOL 4 PG 293 STATE HWY REFS.
- 1976 WIDOT #3620 STATES NOTHING MON. REFERENCED COR
WITH 3 CONG. REFERENCE MONUMENTS.
- 1977 BARNES R1 DIAGRAM OF TRAVERSE CALLS FOR COR
291,300.31; 2,233,246.04. 2650.37 TO SW COR SEC 19,
ANGLE @ SW COR SEC 19 FROM W 1/4 COR SEC 19 TO W 1/4
COR SEC 30 180-00-00.
- 1981 BARNES VOL 6 PG 202 FD CAST IRON MON AT SW EDGE OF
INTERSECTION IN PAVEMENT.
- 1981 AERO-METRIC PHOTO CONTROL NGVD 29 ELEVATION
807.56'
- 1982 BARNES VOL 6 PG 262 FD CI & CONNECTED TO AERO-
METRIC PHOTO CONTROL. 291,300.31; 2,233,246.04
- 1983 SCHROEDER #5959 & #1294 CALLS FOR COR. BUT STATES
NOTHING ABOUT IT. NORTH 1325.17 TO THE 1/16TH COR
- 1983 BARNES VOL 6 PG 301 RECORD DISTANCES
- 1983 BARNES R-1 I USED MY OLD PORTER TWP OBSERVATIONS.
- 2007 BARNES P-1 ACCEPTED FD CI

FD CI. MON & REFERENCE MONUMENTS.

C) Was the corner restored through acceptance of (1) an obliterated evidence location, or, (2) a found perpetuated location?

ACCEPTED FOUND PERPETUATED LOCATION.

D) Describe any material discrepancy between the location of the corner as restored or reestablished and the location of that corner as previously restored or reestablished by distance and direction. Show the discrepancy on the plan view drawing under (a), above. Show the distances between the corner as previously restored or reestablished and (1) the corner as restored or reestablished, and (2) to at least 4 of the witness monuments shown on the drawing in (a), above.

NONE

(E) Was the corner reestablished through lost corner proportionate methods? If so, show the method, including the directions and distances to other public land survey corners used as evidence or used for proportioning the corner location.

I, **Donald Barnes**, hereby certify that the corner location as identified by the corner code index was determined by me under my direction and control and that this U.S. Public Land Survey Monument Record is correct and complete to the best of my knowledge and belief.

Seal


Emboss

SHEET 2 OF 3

Apr 28, 2010

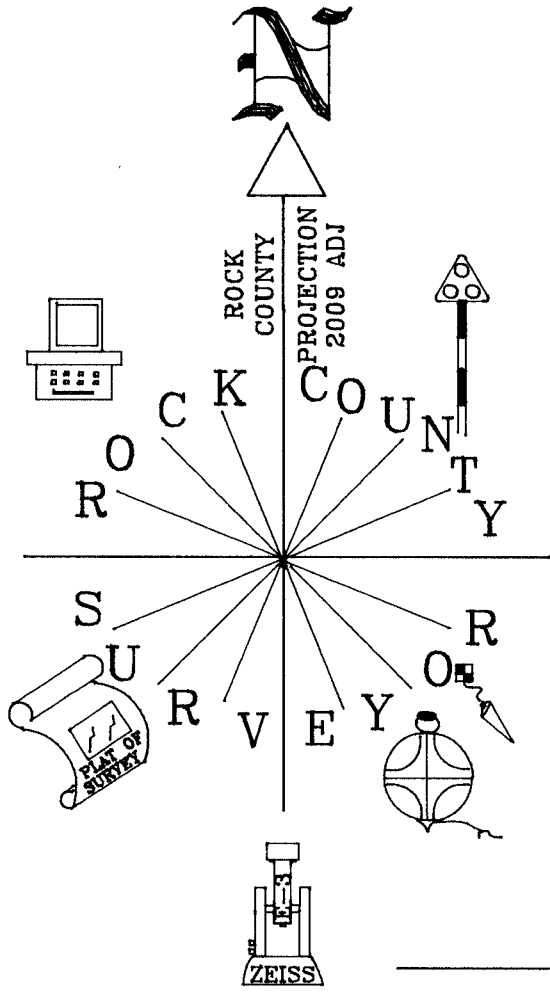
CORNER CODE

P-25

A.E. 7.08 REQUIREMENT

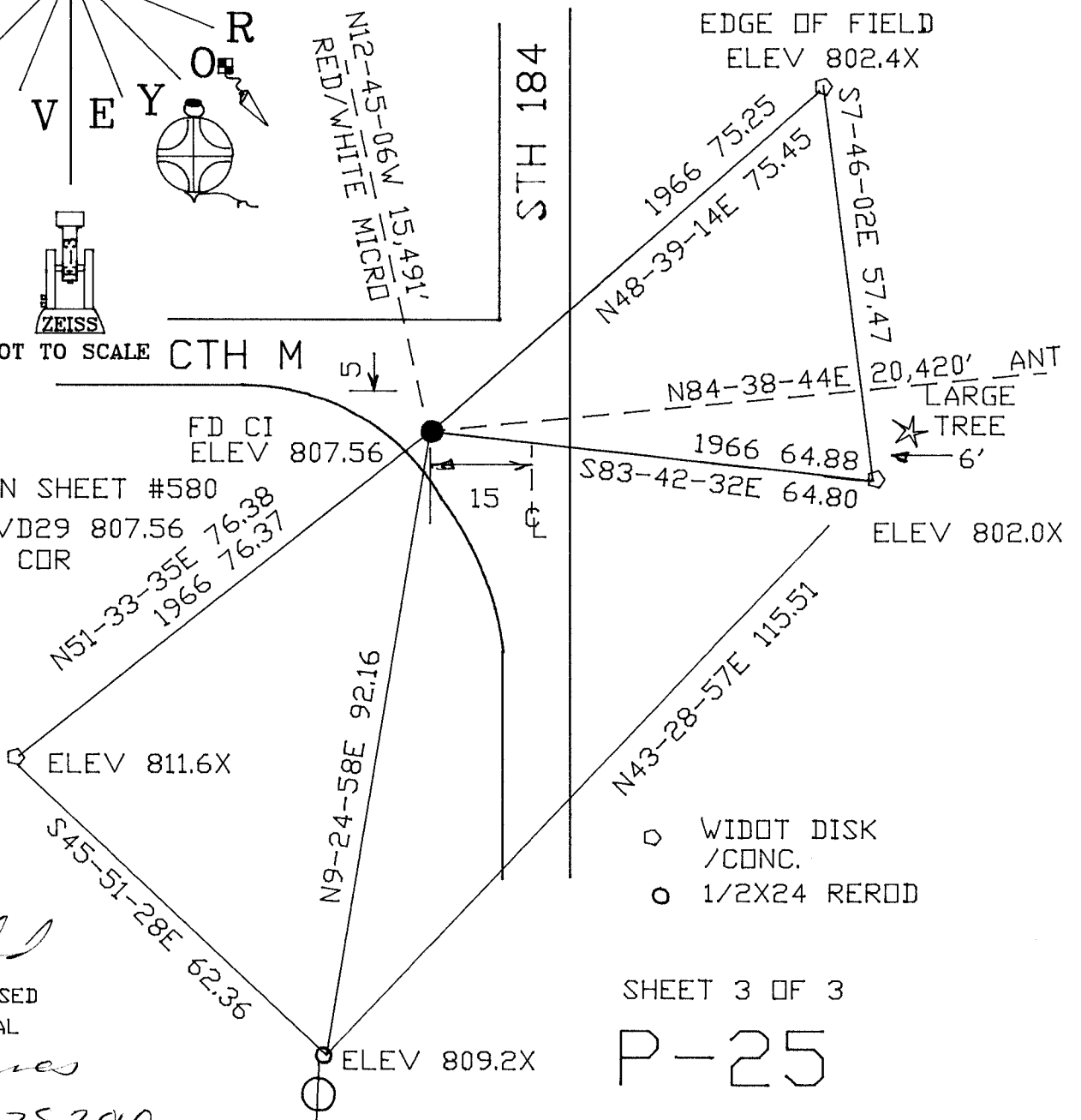
E 1/4 COR
 SEC 24
 PORTER
 T4N R11E

1966 BATTERMAN VOL 4 PG 293



NOT TO SCALE

OBSERVATION SHEET #580
 1981 NGVD29 807.56 76.38
 @ E 1/4 COR



Barner
 EMBOSSED SEAL
 Barner
 April 28, 2010

SHEET 3 OF 3

P-25