

Paper weight-110# (minimum)

Black nonfading ink required

# U.S. PUBLIC LAND SURVEY MONUMENT RECORD

For Public Land Survey Corners In:

WI ADMINISTRATIVE CODE A-E 7.08 REQUIREMENT

T. 4 N. R. 11 E. 4th P.M.

REV 10/23/2004

USMONREC.DWG

CORNER CODE INDEX

**PORTER** TWP

**ROCK COUNTY WI**

IF AVAILABLE

ROCK COUNTY COORDINATES PREFERRED

1	2	3	4	5	6	7	8	9	10	11	12	13	14	15	16	17	18	19	20	21	22	23	24	25	
A	6					5								3											
B																									
C																									
D																									
E																									
F																									
G																									
H																									
J																									
K																									
L																									
M																									
N																									
O																									
P																									
Q																									
R																									
S																									
T																									
U																									
V																									
W																									
X																									
Y																									
Z																									

North \_\_\_\_\_ Elev. \_\_\_\_\_

East \_\_\_\_\_

Hor. Datum \_\_\_\_\_ Vert. Datum \_\_\_\_\_

LATITUDE \_\_\_\_\_ ELLIPS. HT. \_\_\_\_\_

LONGITUDE \_\_\_\_\_

NAD83(91) \_\_\_\_\_ NETWORK ADJ. YR \_\_\_\_\_

GPS (X) \_\_\_\_\_ TRAVERSE (X) \_\_\_\_\_

BASED ON THE FOLLOWING CONTROL:

PLACE MONUMENT SYMBOL  AT PROPER LOCATION ON ABOVE INDEX

CORNER MONUMENT

WITNESS MONUMENT

(a)

BEARINGS ARE BASED ON: -----

FIELD BOOK \_\_\_\_\_ PAGE # \_\_\_\_\_

SHEET 1 OF 4

SHOW A PLAN VIEW DRAWING DEPICTING THE CORNER MONUMENT AND SURROUNDING PHYSICAL FEATURES, INCLUDING THE EXCAVATION AREA AND DEPTH.

PLANNING & ZONING COMMITTEE ADOPTED THIS FORM ON 12/2/1982

CORNER CODE N. 25

PO573 SE-COR-SEC13

(B) Describe any record evidence, monument evidence, occupational evidence, testimonial evidence or any other material evidence you considered, and whether the monument was found or placed.

- 1833 (SEP 26) MULLETT & BRINK NORTH ON EAST SIDE OF SECTION  
24 T4N R11E
- 2640 SET QUARTER SECTION POST BUR OAK 18 S61W 60.72'  
BUR OAK 20 N26W 110.22'
- 3762 TRAIL @ NW
- 3810.84 BUR OAK 14 IN DIAMETER
- 5280 SET POST CORNER SECTIONS 13 & 24 BUR OAK 12  
N83W 54.12' BLACK OAK 10 S12W 51.48'  
LAND ROLLING SECOND RATE FIRST HALF ON WEST SIDE  
OF LINE PRAIRIE EAST SIDE TIMBERED WITH WHITE  
BLACK AND BUR OAK ELM AND WHITE MAPLE LAST 1/2  
TIMBERED WITH WHITE AND BLACK & BUR OAK.
- 1833 (SEP 20) MULLETT & BRINK NORTH ON EAST SIDE SEC 13 T4N  
R11E
- 82.5 DESCEND TO RIVER BOTTOM
- 363 CATFISH CREEK 108.9' @ NE
- 1320 CATFISH CREEK 108.9' @ NW
- 2112 CATFISH CREEK 108.9' @ NE
- 2442 LEAVE RIVER BOTTOM
- 2640 SET QUARTER SECTION POST BUR OAK 20 S48W 87.78'  
BUR OAK 10 N36W 125.4'
- 4369.86 WHITE OAK 20 IN DIAMETER
- 5280 SET POST CORNER SECTIONS 12 & 13 BLACK OAK 8  
S40W 23.1' BLACK OAK 8 N55W 12.54'
- 1833 (OCT 29 NOV 4) HARRISON EAST ON RAND BET SECS 13 & 24  
T4N R11E 4<sup>TH</sup> MER
- 144.54 CATFISH CRK RIGHT BANK SET GUIDE POST CRS S.E.
- 290.4 LEAVE CAT FISH SET MEANDER GUIDE POST ON LEFT  
BANK
- 2640 TEMPY 1/4 SEC COR
- 3019.5 TRAIL NORTH
- 3321.78 NORTHERN BEND OF CATFISH SET G.P
- 4224 LEAVE CAT FISH SET G.P. CRS SE
- 4504.5 CAT-FISH CRS NE SET GUIDE P
- 4711.08 LEAVE CAT-FISH SET GUIDE P
- 5313 INT. E BDY 3.3?(330'?) N OF P LAND ROLLING 2<sup>ND</sup> RATE  
WITH RED BURR & WO TIMBER  
COR. WEST BET SECS 13 & 24
- 601.92 SET M.P. ON RIGHT BANK OF CATFISH RED O 10 S41E  
75.9'
- 808.5 LEAVE CATFISH SET MEAN. P RED O 12 N45W 405.9'?
- 1089 BEND OF CAT-FISH SET MEAN. P. BURR O 10 NORTH  
264'
- 1993.2 LEAVE CAT-FISH SET MEAN P. RED O 12 N33E 39.6'?
- 2656.5 QUARTER SEC COR {W.O. 10 S42E 479.82' W.O. 12  
S80W 29.04'
- 5022.6 LEFT BANK OF CAT-FISH SET MEAN P. W.O.
- 5168.46 LEAVE CATFISH SET MEAN. P. WO. 15 N82W 77.88'  
BURR O 20 S3E 77.88'
- 5313 SEC COR.
- 1834 (APR) HARRISON WEST ON RANDOM BET 18 & 19
- 1773.42 ROAD N.E.
- 2467.08 TRAIL N
- 2640 TEMPY 1/4 SEC COR & ENTER BOTTOM OF CREEK
- 3729 INT. LEFT BANK OF CATFISH CREEK SET GUIDE P
- 3861 LEAVE SAME SET GUIDE P & LEAVE BOTTOM
- 4712.4 TRAIL N.E.
- 5295.84 INT. WEST BDY 11.88' N OF P  
LAND & SAME AS BEFORE

Donald Brewer  
3-31-2009

PAGE 1 OF 4  
CORNER CODE N-25

PO573 SE-COR-SEC13

COR EAST BET 18 & 19

- 1419 SET MEAN POST RIGHT BANK OF CATFISH {BURR O 12 S44W 143.88' RED O 8 N20W 126.72'
- 1551 LEAVE SAME SET MEAND P. ON LEFT BANK {BURR O 18 S45E 143.88'
- 2655.84 QUARTER SEC. CORNER {BUR O 8 N9E 66' BURR O 12 S72E 126.72'
- 5295.84 INT. SEC COR.
- 1833 SURVEYOR GENERAL. IN THE EARLY 1970S, TOM SPRAGUE PUBLISHED A MANUAL FOR ESTABLISHING AND PERPETUATING THE ORIGINAL GOVERNMENT SURVEY IN WISCONSIN. ON PAGE 25 HE STATES THE COPY OF THE GENERAL INSTRUCTIONS TO HIS DEPUTIES; BY THE SURVEYOR GENERAL OF THE UNITED STATES, FOR THE STATES OF OHIO AND INDIANA, AND THE TERRITORY OF MICHIGAN, WHICH IS DATED 1833 IN CINCINNATI. ON PAGE 42 AND 43 HE STATES "SECTION 3 READ AS FOLLOWS BEFORE AN INK DELETION APPARENTLY MADE IN 1839; [IN CLOSING OUT THE SECTION LINES TO THE NORTH AND WEST BOUNDARIES OF THE TOWNSHIP, UNLESS THE SECTION LINES INTERSECT THE BOUNDARIES AT THE SECTION CORNERS THEREON ESTABLISHED FOR THE ADJOINING TOWNSHIPS, YOU MUST SET A POST, AND TAKE BEARING TREES AT EACH SUCH INTERSECTION, AND MEASURE AND NOTE THE DISTANCE TO THE POSTS PREVIOUSLY SET FOR THE ADJOINING TOWNSHIP, AND ON WHICH SIDE OF SUCH POSTS. BUT WHERE-EVER THE CLOSING LINES OF THE SECTIONS, INTERSECT AT THE POSTS ON THE NORTH AND WEST BOUNDARIES, SUCH POSTS BECOME COMMON FOR THE SECTIONS ON BOTH SIDES OF THE TOWN BOUNDARY.]
- 1847 CRAVATH "VILLAGE OF FULTON" BK 10 PG 27 THE SW COR OF SEC 18 IS THE SW COR OF LOT #2 BLOCK 15 AS STRUCK BY ALLANSON VAUGHN THEN COUNTY SURVEYOR.
- 1875 RUGER VOL 2 PG 200 FD REMAINS OF OLD STAKE AT COR. ALSO FD STUMP OF NW BT & WHERE STUMP OF SW BT HAD BEEN DUG UP. DROVE NEW STAKE IN PLACE OF OLD ON E SURROUNDED IT BY 1 HH & 3 LIMESTONES. 2691.48 TO N 1/4 COR SEC 19, 2640 TO W 1/4 COR SEC 19
- 1944 SUNNY #6184 STATES NOTHING ABOUT TYPE OF MON.
- 1950 WIDOT #655 CTH M STATES NOTHING ABOUT MON.
- 1959 ELY #1271 CALLS FOR BUT STATES NOTHING ABOUT IT. WESTERN R/W LINE OF FULTON ST. IS 501.6 EAST OF COR.
- 1960 ELY #1268 STATES NOTHING ABOUT MON.
- 1966 BATTERMAN VOL 4 PG 293 SET 1" PIPE. WEST OF STH 184.
- 1968 LEE #M14337 & M14336 SIZE 2, SEC 18 "VILLAGE OF FULTON" CONSIDERED OBLITERATED & WAS RESET BY PROPORTION MEASUREMENT OF OCCUPATION OF LINES IN THE NW 1/4 OF SEC 18 & BY TESTIMONY THAT THE WEST LINE OF SECTION 19 PASSED THROUGH THE KITCHEN OF A HOUSE 800' SOUTH OF SAID CORNER. N89-09-06E 2666.86 TO FD CONC. MON @ S 1/4 COR SEC 18 & N00-55-40W 2656.77 TO FD 24X12X4 POINTED HH @ W 1/4 COR SEC 18.
- 1968 LEE #1286 WAS CONSIDERED OBLITERATED & WAS RESET BY PROPORTIONATE MEASUREMENT OF OCCUPATION LINES IN THE NW 1/4 OF SEC 18 & BE TESTIMONY THAT THE LINE PASSED THROUGH THE KITCHEN OF A HOUSE 800 FEET SOUTH OF SAID COR. 2666.86 TO S 1/4 COR SEC 18, 2656.77 TO W 1/4 COR SEC 18, ANGLE 90-04-46 @ SW COR SEC 18 FROM W 1/4 18 TO S 1/4 COR SEC 18
- 1971 SCHROEDER #1294 CALLS FOR COR. BUT STATES NOTHING ABOUT IT.
- 1973 LEE #1286 SET CONC. MON N89-25-23E 2665.36 TO S 1/4 COR SEC 18, NO-37-28W 2657.35 TO W 1/4 COR SEC 18
- 1978 BARNES #1275 SHOWS RECORD DISTANCES.

PAGE 2 OF 4

CORNER CODE N-25

*Donald Barnes*

3-31-2009

PO573 SE-COR-SEC13

1992 BARNES N-1 POLY MON. REF. SAME. N88-31-57E 2666.75 TO S ¼ COR SEC 18 & N1-32-20W 2656.96 TO W ¼ COR SEC 18. FD 1 ½" PIPE 1' NORTH AND DID NOT FIND THE CONCRETE MON. ALSO FD THE REFERENCE POINTS THAT LEE CALLED FOR IN HIS 1968 SURVEY. ACCEPTED OBLITERATED EVIDENCE LOCATION. PERPETUATED THE LOCATION THAT LEE ESTABLISHED IN 1973 FROM RUGER'S CALL LINE IN THE HOUSE.

1992 COMBS N-1 STATED THAT HE REMEMBERED PLACING THE CONCRETE MONUMENT WHILE WORKING FOR LEE IN 1973 AND THE LAND OWNER LATER REMOVED IT AND TOSSED IT IN THE RIVER. ALSO THE CORNER WAS ESTABLISHED BY USING RUGER'S CALL FOR LINE IN A WINDOW OF A HOUSE THAT WAS TO THE SOUTH.

1993 JOHNS #10195 & 10113 2657.04 TO E ¼ COR SEC 13. ALUM. MON. TOP ON SURFACE. USED STEM & MAGNETIC PART OF MON. N00-57-17W 2657.04 TO E 1/4 COR SEC 13

2002 CARLSON CSM VOL 25 PG 411 FD POLY. MON.

I USED MY 1992 FIELD OBSERVATIONS.

C) Was the corner restored through acceptance of (1) an obliterated evidence location, or, (2) a found perpetuated location?

ACCEPTED POLY MON.

D) Describe any material discrepancy between the location of the corner as restored or reestablished and the location of that corner as previously restored or reestablished by distance and direction. Show the discrepancy on the plan view drawing under (a), above. Show the distances between the corner as previously restored or reestablished and (1) the corner as restored or reestablished, and (2) to at least 4 of the witness monuments shown on the drawing in (a), above.

(E) Was the corner reestablished through lost corner proportionate methods? If so, show the method, including the directions and distances to other public land survey corners used as evidence or used for proportioning the corner location.

I, **Donald Barnes**, hereby certify that the corner location as identified by the corner code index was determined by me under my direction and control and that this U.S. Public Land Survey Monument Record is correct and complete to the best of my knowledge and belief.

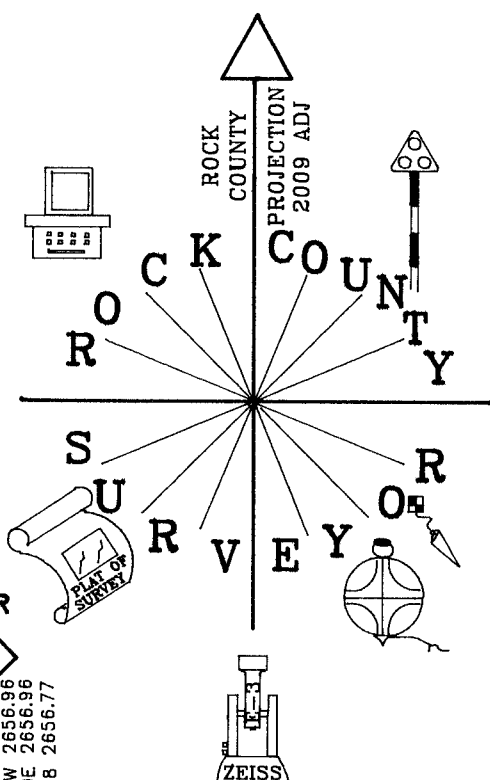
Seal  
Donald  
Emboss  
Barnes  
3-31-2009

SHEET 3 OF 4

CORNER CODE

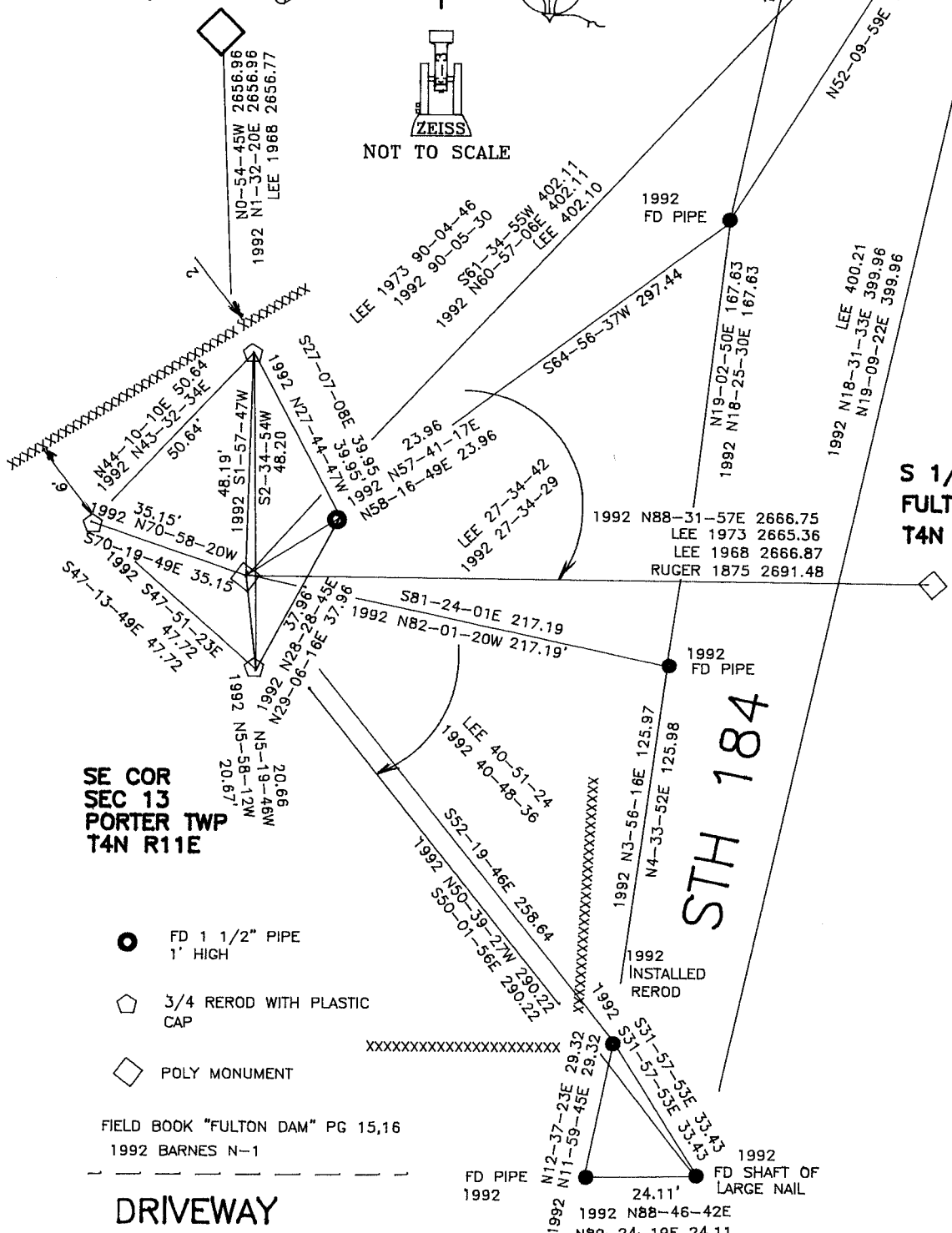
**N-25**

A.E. 7.08 REQUIREMENT



E 1/4 COR

S 1/4 COR  
FULTON TWP  
T4N R12E



SE COR  
SEC 13  
PORTER TWP  
T4N R11E

STH 184

- FD 1 1/2" PIPE  
1' HIGH
  - ◻ 3/4 REROD WITH PLASTIC  
CAP
  - ◊ POLY MONUMENT
- FIELD BOOK "FULTON DAM" PG 15,16  
1992 BARNES N-1

DRIVEWAY

EMBOSSED  
SEAL

*Donald Barnes*

3-31-2009

SHEET 4 OF 4  
N-25