

Paper weight-110# (minimum)

Black nonfading ink required

U.S. PUBLIC LAND SURVEY MONUMENT RECORD

For Public Land Survey Corners In:

WI ADMINISTRATIVE CODE A-E 7.08 REQUIREMENT

T. 4 N. R. 11 E. 4th P.M.

REV 10/23/2004

USMONREC.DWG

CORNER CODE INDEX

PORTER TWP

ROCK COUNTY WI

IF AVAILABLE

ROCK COUNTY COORDINATES PREFERRED

North _____ Elev. _____

East _____

Hor. Datum _____ Vert. Datum _____

LATITUDE _____ ELLIPS. HT. _____

LONGITUDE _____

NAD83(91) _____ NETWORK ADJ. YR _____

GPS (X) _____ TRAVERSE (X) _____

BASED ON THE FOLLOWING CONTROL:

	1	2	3	4	5	6	7	8	9	10	11	12	13	14	15	16	17	18	19	20	21	22	23	24	25		
A																											A
B																											B
C																											C
D																											D
E																											E
F																											F
G																											G
H																											H
J																											J
K																											K
L																											L
M																											M
N																											N
O																											O
P																											P
Q																											Q
R																											R
S																											S
T																											T
U																											U
V																											V
W																											W
X																											X
Y																											Y
Z																											Z

PLACE MONUMENT SYMBOL AT PROPER LOCATION ON ABOVE INDEX

CORNER MONUMENT

WITNESS MONUMENT

(a)

BEARINGS ARE BASED ON: -----

FIELD BOOK _____ PAGE # _____

SHEET 1 OF 3

SHOW A PLAN VIEW DRAWING DEPICTING THE CORNER MONUMENT AND SURROUNDING PHYSICAL FEATURES, INCLUDING THE EXCAVATION AREA AND DEPTH.

PLANNING & ZONING COMMITTEE ADOPTED THIS FORM ON 12/2/1982

CORNER CODE L-25

PO560 E-1/4COR-SEC13

(B) Describe any record evidence, monument evidence, occupational evidence, testimonial evidence or any other material evidence you considered, and whether the monument was found or placed.

- 1833 (SEP 20) MULLETT & BRINK NORTH ON EAST SIDE SEC 13
T4N R11E
- 82.5 DESCEND TO RIVER BOTTOM
363 CATFISH CREEK 108.9' @ NE
1320 CATFISH CREEK 108.9' @ NW
2112 CATFISH CREEK 108.9' @ NE
2442 LEAVE RIVER BOTTOM
2640 SET QUARTER SECTION POST BUR OAK 20
S48W 87.78' BUR OAK 10 N36W 125.4'
- 4369.86 WHITE OAK 20 IN DIAMETER
5280 SET POST CORNER SECTIONS 12 & 13 BLACK
OAK 8 S40W 23.1' BLACK OAK 8 N55W 12.54'
- 1851 STEBBINS PORTER RD REC BK 1 PG 5 SURVEY OF A ROAD
IN THE TOWN OF PORTER MADE MAY 10TH 1851. BEGINNING
AT A PT 33' SOUTH OF THE 1/4 POST ON THE EAST LINE OF
SEC 13, T4N R11E; THENCE WEST PARALLEL WITH THE 1/4
LINE RUNNING THROUGH SAID SEC 4569.84'; THENCE
N11W 858'; THENCE "'''" COURSE GIVEN ACCORDING TO
THE TRUE MERIDIAN. VARIATION OF NEEDLE 7-3/4
- 1855 PORTER RD REC BK 1 PG 6 BEGINNING AT THE 1/4 POST ON
THE EAST LINE OF SEC 13 T4N R1E; THENCE WEST ON THE
CENTER LINE OF SEC 13; 4540.8'; THENCE S6E 419.76';
"'''" DECLARE THE ABOVE DESCRIBED ROAD TO BE A
PUBLIC HIGHWAY 66' WIDE,
- 1855 PORTER TWP RD REC BK 1 PG 6&7 BEGINNING AT THE 1/4
POST ON THE EAST LINE OF SEC 13 T4N R1E; THENCE
WEST ON THE CENTER LINE OF SEC 13; 4540.8'; THENCE
S6E 419.76'; THENCE S40W 396' DOWN A RAVINE; THENCE
NB2W 198' ACROSS THE CATFISH RIVER; THENCE N15W
770.88' TO THE CENTER LINE OF SEC 13; THENCE WEST ON
SAID LINE 122' TO 1/4 POST ON WEST LINE OF SEC 13;
THENCE WEST ON THE CENTER LINE OF SEC 14, 2640' TO
CENTER OF SEC 14; THENCE NORTH ON THE N & S CENTER
LINE OF SEC 14 2057.88' TO RIVER; THENCE N44W 808.5'
TO NORTH LINE OF SEC 14; THENCE WEST ON THE NORTH
LINE OF 14, 1897.5' TO NW COR OF 14, THENCE SOUTH 33'
THENCE WEST PARALLEL TO NORTH LINE OF SEC 15, 3960'
TO RD RUNNING NORTH AND SOUTH THROUGH SEC 15;
AND NOW THEREFORE WE THE SUPERVISORS "'''" DELCARE
THE ABOVE DESCRIBED RD TO BE A PUBLIC HIGHWAY 66'
WIDE "''". "'''" DECLARE THE ABOVE DESCRIBED ROAD TO
BE A PUBLIC HIGHWAY 66' WIDE,
- 1888 TWP RD BK 2 PG 5 BEGINNING AT THE QUARTER POST AT
THE SOUTH WEST CORNER OF THE NORTH WEST QUARTER
OF SEC 18 OF SAID TOWN OF FULTON AND RUNNING;
THENCE EAST 37 NORTH 211.86' TO A STAKE; THENCE
EAST 15 1/2 NORTH 224.4' TO A STAKE; THENCE EAST 25 1/2
NORTH 594.99' TO A STAKE TO THE HIGHWAY RUNNING
NORTH FROM THE VILLAGE OF FULTON SAID HIGHWAY
BEING 66' WIDE BEING 16.5' ON THE SOUTH SIDE OF THIS
LINE AND 49.5' ON THE NORTH SIDE OF SAID LINE.
VARIATION OF NEEDLE
- 1965 SCHROEDER CSM VOL 5 PG 347 STATES NOTHING ABOUT
MON.
- 1968 LEE #01281 CONSIDERED LOST AND WAS ESTABLISHED BY
SINGLE PROPORTIONATE MEASUREMENT BETWEEN THE NW
& SW CORNERS OF SEC 18. 2656.77 TO SW & NW COR SEC
18
- 1968 LEE CSM 3-167 STATES NOTHING ABOUT MON.
- 1968 LEE #M14337 & M14336 SIZE 2, SEC 18 "VILLAGE OF
FULTON" CONSIDERED OBLITERATED & WAS RESET BY
PROPORTION MEASUREMENT OF OCCUPATION OF LINES IN
THE NW 1/4 OF SEC 18 & BY TESTIMONY THAT THE WEST LINE

Donald Barnes
4-01/2009

PO560 E-1/4COR-SEC13
 OF SECTION 19 PASSED THROUGH THE KITCHEN OF A
 HOUSE 800' SOUTH OF SAID CORNER. NB9-09-06E
 2666.86 TO FD CONC. MON @ S ¼ COR SEC 18 & N00-55-
 40W 2656.77 TO FD 24X12X4 POINTED HH @ W ¼ COR SEC
 18.

1971 SCHROEDER CSM VOL 2 PG 165 STATES NOTHING ABOUT
 MON.

1973 LEE #1286 FD PIPE & ON LINE WITH THE NW & SW COR OF
 SEC 18. 2657.38 TO THE NW SEC 18, 2657.35 TO SW COR
 SEC 18.

1976 BARNES VOL 5 PG 115 FD 1" PIPE WITH CAP (RLS 181) &
 REFERENCED SAME. 34' SOUTH OF SOUTH PVMT EDGE OF
 CALEDONIA RD

1976 SCHROEDER CSM VOL 5 PG 347 STATES NOTHING ABOUT
 MON.

1978 BARNES #13772 & 1275 USED COR FOR A SURVEY IN SEC
 18.

1979 BARNES #6182 FD CAPPED PIPE

1981 BARNES VOL 6 PG 201 FD 1" PIPE & REPLACED SAME WITH
 ALUM. & REFERENCED SAME.

1981 AERO-METRIC PHOTO CONTROL NGVD 29 ELEVATION
 795.13'

1987 NORTHOP CSM VOL 12 PG 588 USED COR FOR THE
 SURVEY

1992 BARNES L-1 FD ALUM. & REF. SAME. ALUM IN BETWEEN
 CALEDONAI RD & PARK LANE.

1992 BARNES N-1 2656.96 TO SW COR SEC 18

1993 BARNES #14426 FD ALUM

1993 JOHNS #10113 & 10194 MON. S00-57-17W 2657.04 TO SE
 COR SEC 13.

1996 BARNES #8920 & 9042 FD ALUM

1999 COMBS #7381 ALUM. MON.

2007 BARNES L-1(1) FD ALUM & REFERENCE MONUMENTS &
 ACCEPTED FD ALUM. MON.

USED MY OLD OBSERVATIONS.

C) Was the corner restored through acceptance of (1) an obliterated evidence location, or, (2) a found perpetuated location?

ACCEPTED ALUM. MON.

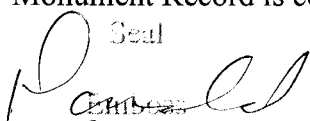
D) Describe any material discrepancy between the location of the corner as restored or reestablished and the location of that corner as previously restored or reestablished by distance and direction. Show the discrepancy on the plan view drawing under (a), above. Show the distances between the corner as previously restored or reestablished and (1) the corner as restored or reestablished, and (2) to at least 4 of the witness monuments shown on the drawing in (a), above.

NONE

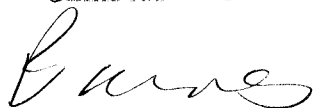
(E) Was the corner reestablished through lost corner proportionate methods? If so, show the method, including the directions and distances to other public land survey corners used as evidence or used for proportioning the corner location.

YES BY LEE IN 1968.

I, **Donald Barnes**, hereby certify that the corner location as identified by the corner code index was determined by me under my direction and control and that this U.S. Public Land Survey Monument Record is correct and complete to the best of my knowledge and belief.

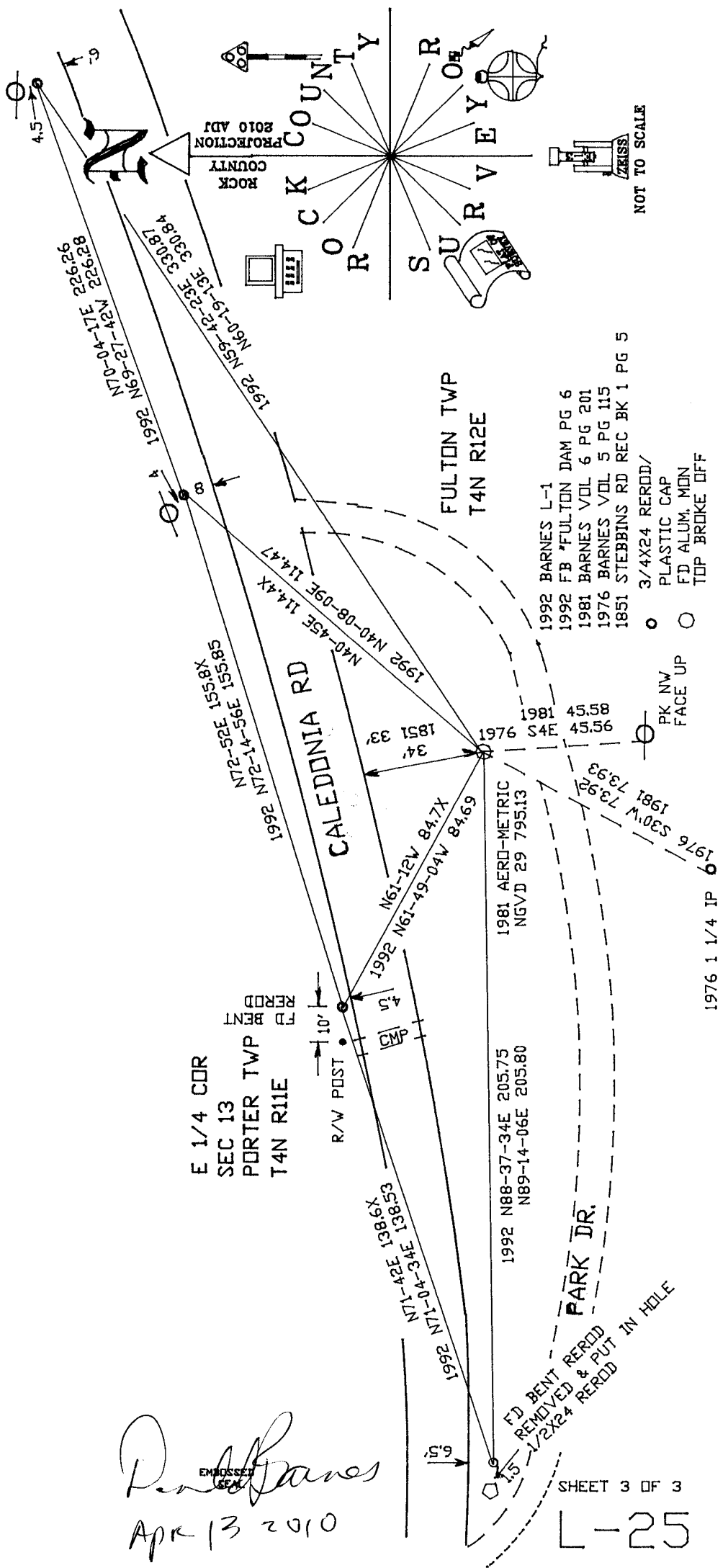
Seal


SHEET 2 OF 3



CORNER CODE **L-25**

4-01-2009 A.E. 7.08 REQUIREMENT



Paul Barnes
 APR 13 2010

E 1/4 COR
 SEC 13
 PORTER TWP
 T4N R11E

- 1992 BARNES L-1
- 1992 FB *FULTON DAM PG 6
- 1981 BARNES VOL 6 PG 201
- 1976 BARNES VOL 5 PG 115
- 1851 STEBBINS RD REC BK 1 PG 5
- 3/4X24 RERODD/
- PLASTIC CAP
- FD ALUM. MON
- TOP BROKE OFF

SHEET 3 OF 3
 1-25

1976 1 1/4 IP