

Paper weight-110# (minimum)

Black nonfading ink required

U.S. PUBLIC LAND SURVEY MONUMENT RECORD

For Public Land Survey Corners In:

WI ADMINISTRATIVE CODE A-E 7.08 REQUIREMENT

T. 4 N. R. 11 E. 4th P.M.

REV 10/23/2004

USMONREC.DWG

CORNER CODE INDEX

1	2	3	4	5	6	7	8	9	10	11	12	13	14	15	16	17	18	19	20	21	22	23	24	25	
A																									A
B																									B
C	6																								C
D																									D
E																									E
F																									F
G	7																								G
H																									H
J																									J
K																									K
L	18																								L
M																									M
N																									N
O																									O
P	19																								P
Q																									Q
R																									R
S																									S
T	30																								T
U																									U
V																									V
W																									W
X	31																								X
Y																									Y
Z																									Z
1	2	3	4	5	6	7	8	9	10	11	12	13	14	15	16	17	18	19	20	21	22	23	24	25	

PLACE MONUMENT SYMBOL AT PROPER LOCATION ON ABOVE INDEX

PORTER TWP

ROCK COUNTY WI

IF AVAILABLE
ROCK COUNTY COORDINATES PREFERRED

North _____ Elev. _____

East _____

Hor. Datum _____ Vert. Datum _____

LATITUDE _____ ELLIPS. HT. _____

LONGITUDE _____

NAD83(91) _____ NETWORK ADJ. YR _____

GPS (X) _____ TRAVERSE (X) _____

BASED ON THE FOLLOWING CONTROL:

CORNER MONUMENT

WITNESS MONUMENT

BEARINGS ARE BASED ON: _____

FIELD BOOK _____ PAGE # _____

SHEET 1 OF 4

SHOW A PLAN VIEW DRAWING DEPICTING THE CORNER MONUMENT AND SURROUNDING PHYSICAL FEATURES, INCLUDING THE EXCAVATION AREA AND DEPTH.

PLANNING & ZONING COMMITTEE ADOPTED THIS FORM ON 12/2/1982

CORNER CODE J-25

(B) Describe any record evidence, monument evidence, occupational evidence, testimonial evidence or any other material evidence you considered, and whether the monument was found or placed.

- 1833 (SEP 20) MULLETT & BRINK NORTH ON EAST SIDE SEC 12 T4N
R11E
- 957 ENTER PRAIRIE
1538.46 INDIAN PATH @ NW & SE
2131.8? LEAVE PRAIRIE
2180.64 BURR OAK 10 IN DIAMETER
2640 SET QUARTER SECTION POST BUR OAK 18 S23W 9.9'
BUR OAK 10 N4 1/4W 165'
- 3993.66 BUR OAK 10 IN DIAMETER
5280 SET POST CORNER SECTIONS 1 & 12 BLACK OAK 8 S 1
1/2 W 55.44' BUR OAK 8 N57W 9.9' LAND ROLLING
SECOND RATE FIRST 1/2 SOME PRAIRIE LAST 1/2
TIMBERED WITH WHITE BLACK AND BUR OAK
- 1833 (SEP 20) MULLETT & BRINK NORTH ON EAST SIDE SEC 13 T4N
R11E
- 82.5 DESCEND TO RIVER BOTTOM
363 CATFISH CREEK 108.9' @ NE
1320 CATFISH CREEK 108.9' @ NW
2112 CATFISH CREEK 108.9' @ NE
2442 LEAVE RIVER BOTTOM
2640 SET QUARTER SECTION POST BUR OAK 20 S48W 87.78'
BUR OAK 10 N36W 125.4'
- 4369.86 WHITE OAK 20 IN DIAMETER
5280 SET POST CORNER SECTIONS 12 & 13 BLACK OAK 8
S40W 23.1' BLACK OAK 8 N55W 12.54'
- 1833 (OCT 29) HARRISON EAST ON RAND BET SECS 12 & 13 T4N R11
- 1056 TRAIL CRS NORTH
2640 TEMPY 1/4 SEC COR4
4290 LEAVE PRAIRIE & ENTER SMALL SCATTERING TIMBER OF
BURR & RED O
- 5273.4 INT. E. BDY 39.6' S OF P. LAND FOR THE 1ST 3/4 OF A
MILE ? ROLLING PRAIRIE 1ST RATE ? ROLLING 2ND RATE
WITH RED & BUR O
COR WEST BET SECS 12 & 13
- 2636.7 QUARTER SEC COR. SET A POST & RAISED MOUND ON
GROUND HIGH & ROLLING
5273.4 INT. SEC. COR
OCT 29 1833
- 1834 (APR) HARRISON WEST ON A RANDOM BET 7 & 18
- 1320 LEAVE PRAIRIE
2640 TEMPY 1/4 SEC COR.
3884.1 TRAIL NW TO FOUR LAKES
5338.74 WEST BOUNDARY 19.14' N OF P LAND ROLLING 2ND RATE
WITH BUR OAK TIMBER FOR LAST 3/4 OF MILE 1ST 1/4 LEVEL
2ND RATE PRAIRIE
COR EAST BET 7 & 18
- 2698.74 QUARTER SEC COR {BURR O 10 N76W 213.18' BURR O
10 S10E 83.92' BURR O 10 BURR O 10} MARKED
5338.74 INT. SEC COR
IN THE EARLY 1970S, TOM SPRAGUE PUBLISHED HIS MANUAL
FOR ESTABLISHING AND PERPETUATING THE ORIGINAL
GOVERNMENT SURVEY IN WISCONSIN. IN PAGE 25 HE STARTS
THE COPY OF THE GENERAL INSTRUCTIONS TO HIS DEPUTIES; BY
THE SURVEYOR GENERAL OF THE UNITED STATES, FOR THE
STATES OF OHIO AND INDIANA, AND THE TERRITORY OF
MICHIGAN, WHICH IS DATED 1833 IN CINCINNATI. ON PAGE 42
AND 43 HE STATES "SECTION 3 READ AS FOLLOWS BEFORE AN
INK DELETION APPARENTLY MADE IN 1839; [IN CLOSING OUT THE
SECTION LINES TO THE NORTH AND WEST BOUNDARIES OF THE
TOWNSHIP, UNLESS THE SECTION LINES INTERSECT THE
BOUNDARIES AT THE SECTION CORNERS

Donald Barnes
4-1-2009

PO553 NE-COR-SEC13

THEREON ESTABLISHED FOR THE ADJOINING TOWNSHIPS, YOU MUST SET A POST, AND TAKE BEARING TREES AT EACH SUCH INTERSECTION, AND MEASURE AND NOTE THE DISTANCE TO THE POSTS PREVIOUSLY SET FOR THE ADJOINING TOWNSHIP, AND ON WHICH SIDE OF SUCH POSTS. BUT WHERE-EVER THE CLOSING LINES OF THE SECTIONS, INTERSECT AT THE POSTS ON THE NORTH AND WEST BOUNDARIES, SUCH POSTS BECOME COMMON FOR THE SECTIONS ON BOTH SIDES OF THE TOWN BOUNDARY.]

- 1885 STEBBINS BK 1 PG 6 TWP RD BEGINNING AT A STAKE ON THE NORTH LINE OF SEC 3 T4NR12E 1365.54' WEST OF THE NE COR OF SAID SEC; THENCE S30W 2640 SET ANGLE POST, THENCE S25W 3478.2 SET ANGLE POST, BURR OAK, N45W 726'; THENCE S70W 2681.58' SET ANGLE POST BURR OAK 8; N50E 4620; THENCE S50-30W 2520.54 SET ANGLE POST W. OAK 20 S37E 86.46' BLACK OAK 24 S61E 103.62'; THENCE S. 2118.6' TO LINE BETWEEN 9 & 16 1320 E OF SW COR OF 9; THENCE WEST ON SEC LINE 11,880' TO THE SW COR OF SEC 7 & THE WHOLE LENGTH OF THE RD IS 25,318.92'. COURSE GIVEN ACCORDING TO THE TRUE MERIDIAN. VARIATION OF NEEDLE 7-30 [CTH F & STH 51
- 1852 TWP RD BK 1 PG 20 COMMENCING AT THE CANAL BRIDGE AT THE NORTH END OF STATE ST. IN FULTON VILLAGE IN SEC 18 IN SAID TOWN; THENCE IN A NORTHERLY DIRECTION ACROSS THE CATFISH RIVER AND ACROSS THE MARSH UP INTO THE RAVINE (FOLLOWING THE ROAD AS NOW TRAVELED) THENCE NORTH FOLLOWING THE NORTH RAVINE ON THE MOST PRACTICABLE ROUTE ACROSS THE NW 1/4 OF SAID SEC 18 TO THE NORTH LINE OF SAID SEC. ALSO BEGINNING AT THE NORTH W. COR. OF SAID SEC 18, AND SW COR OF SEC 7 IN SAID TOWN; THENCE EAST ON THE SEC. LINE BETWEEN SAID SECTIONS TILL THENCE EAST ON THE SEC LINE BETWEEN SAID SECTIONS TILL IT MEETS THE HIGHWAY RUNNING EAST & WEST BETWEEN SEC 8 AND 17 IN SAID TOWN; "''''''''" DECLARE THE ABOVE DESCRIBED ROAD (ACCORDING TO THE SURVEY ABOVE DESCRIBED) TO BE A PUBLIC HIGHWAY 4 RODS WIDE, AND "''''''"
- 1871 RUGER VOL 2 PG 63 FD OLD STAKE & WHERE STUMPS OF B.T.S HAD BEEN DUG UP SET HH STONE 26X13X6 POINT UP VAR 7-27 TO W 1/4 COR SEC 7. W 1/4 COR SEC 7 DECLARED LOST, S 1/4 COR SEC 12 DECLARED LOST. VAR 6-49 TO S 1/4 COR SEC 12
- 1937 SUNNY VOL 3 PG 359 THIS COR. NOT IN BLACK TOP OF RD. DID NOT DIG FOR IT.
- 1951 DOT #6256 STH 184 STATES NOTHING ABOUT MON. CALLS FOR NW 18 AS 839' WEST OF STH 184.
- 1965 BATTERMAN VOL 4 PG 223 FD PK BY WP&L 2642.90 WP&L TO W 1/4 COR SEC 7
- 1965 ELY #13535 STATES NOTHING ABOUT MON. 1322.3 TO SE COR OF NE 1/4 OF SE 1/4
- 1968 LEE #1281 FD 24X12X4 POINTED HH 2656.77 TO W 1/4 COR SEC 18
- 1971 BATTERMAN VOL 4 PG 256 SET CI HARRISON MON AND PLACED STONE ON EASTERLY SIDE OF IT. DUG & FD 12"X4"X24" HH. REF SAME. SW OF WEST EDGE PVMT. @ W 1/16TH COR OF SW 1/4 SEC 7 FULTON TWP FD 9X4X HH SURROUNDED BY HH SET 3/4 PIN & REFRENCED SAME.
- 1971 LEE CSM VOL 2 PG 95 STATES NOTHING ABOUT MON.
- 1973 LEE #1286 SET PIN. SO-37-28E 2657.38 TO W 1/4 COR SEC 18.

Donald Barnes
4-1-2009

SHEET 2 OF 4
CORNER CODE J-25

PO553 NE-COR-SEC13

1978 BARNES #1275 SHOWS RECORD DISTANCES.
1978 SCHROEDER CSM VOL 8 PG 139 STATES NOTHING ABOUT
MON.
1979 LEUNBERGER CSM VOL 8 PG 371 C.I. ANGLE 89-54 @ NW
COR SEC 18 FROM N 1/4 COR TO W 1/4 COR SEC 18
1981 BARNES VOL 6 PG 211 FD CAST IRON. OFF RD
2007 BARNES J-1 FD CI MON. & SOUTH REFERENCE PIPE LAYING
ON TOP OF GROUND. RESET PIPE. ACCEPTED FD CI.

I USED MY 2007 OBSERVATIONS TO THE CI

C) Was the corner restored through acceptance of (1) an obliterated evidence location, or, (2) a found perpetuated location?

ACCEPTED FD CI.

(E) Was the corner reestablished through lost corner proportionate methods? If so, show the method, including the directions and distances to other public land survey corners used as evidence or used for proportioning the corner location.

NO

I, **Donald Barnes**, hereby certify that the corner location as identified by the corner code index was determined by me under my direction and control and that this U.S. Public Land Survey Monument Record is correct and complete to the best of my knowledge and belief.


Seal
Emboss

4-1-2009

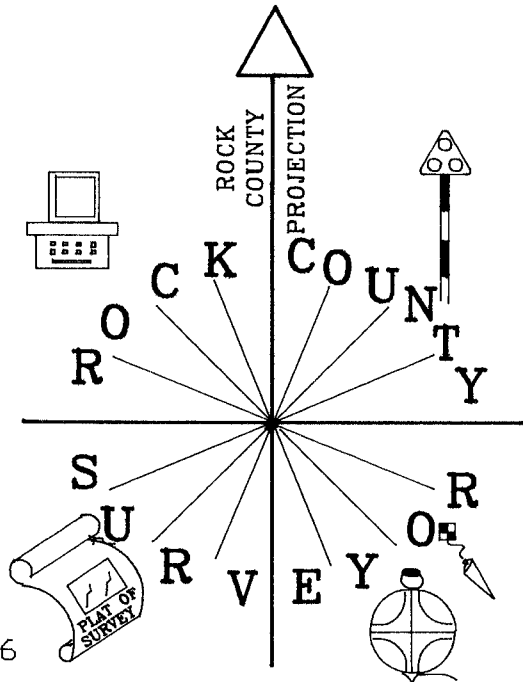
SHEET 3 OF 4

CORNER CODE **J-25**

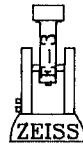
A.E. 7.08 REQUIREMENT

OBS. SHEET
#417

1971 BATTERMAN VOL 4 PG 256
2007 BARNES J-1



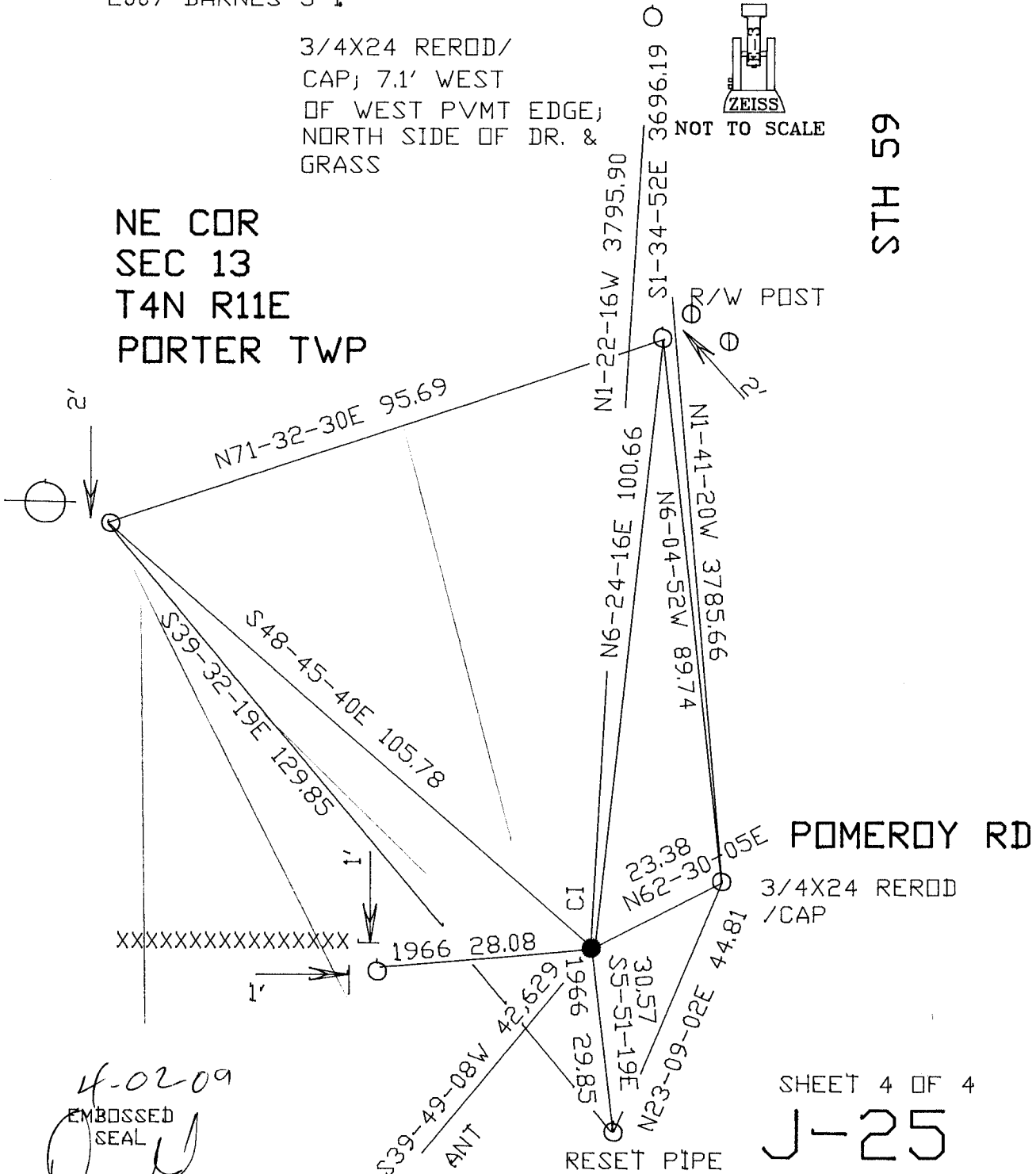
3/4X24 REROD/
CAP; 7.1' WEST
OF WEST PVMT EDGE;
NORTH SIDE OF DR. &
GRASS



NOT TO SCALE

STH 59

NE COR
SEC 13
T4N R11E
PORTER TWP



4-0209
EMBOSSED
SEAL
David Barnes

SHEET 4 OF 4

J-25