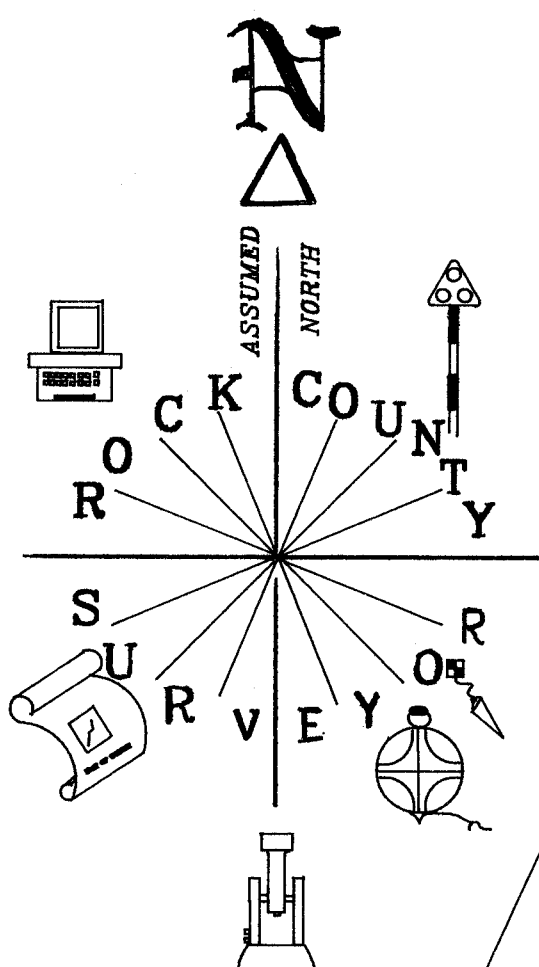
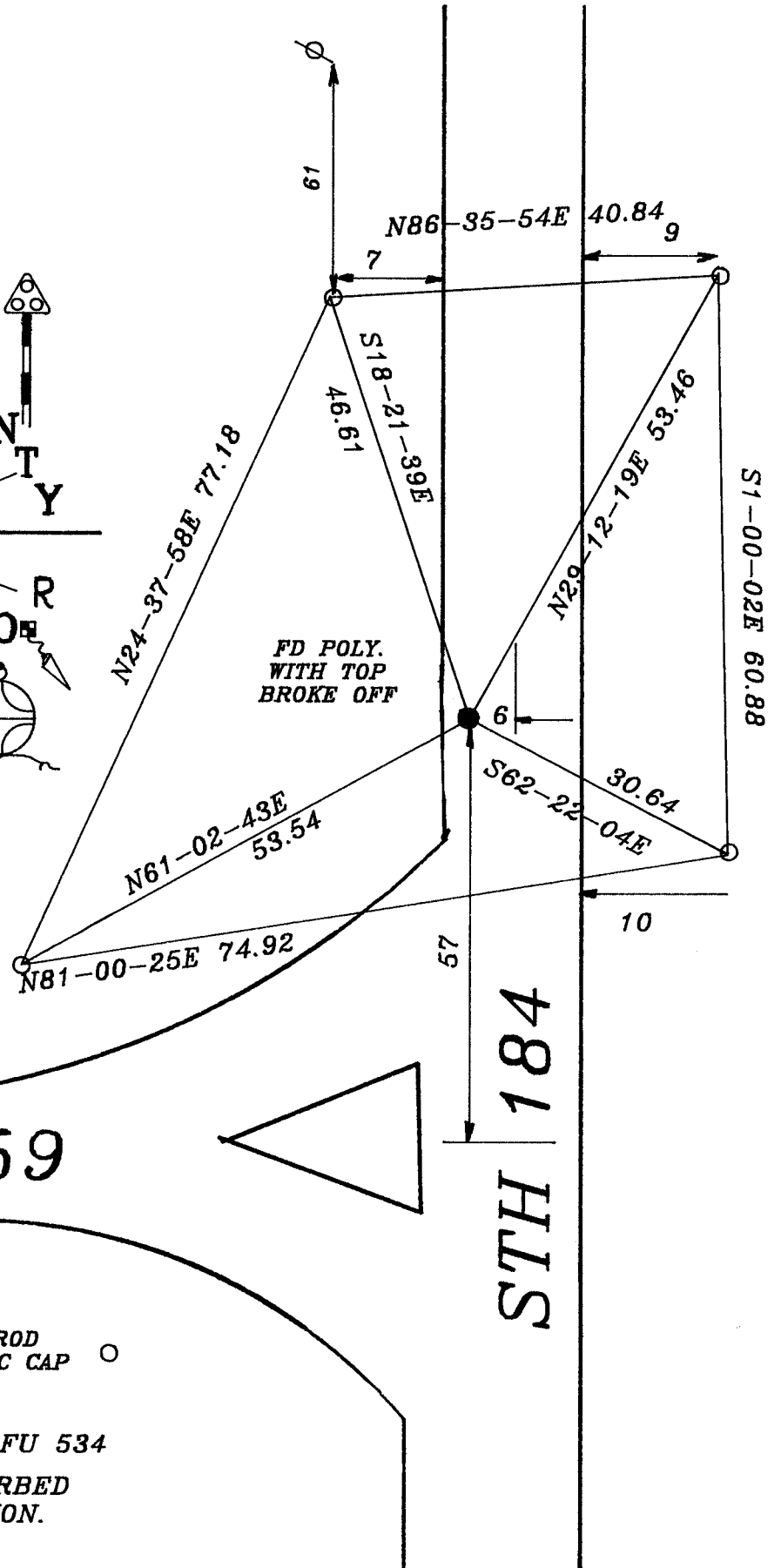


Donald Barnes
 8-30-95



**E 1/4 COR
 SEC 12**



3/4X24 REROD WITH PLASTIC CAP ○

OBSERVATION SHEET FU 534
 CORNER WILL BE DISTURBED BY ROAD CONSTRUCTION.

(B) Describe any record evidence, monument evidence, occupational evidence, testimonial evidence or any other material evidence you considered, and whether the monument was found or placed.
FOUND MONUMENT AS SHOWN IN DRAWING.

C) Was the corner restored through acceptance of (1) an obliterated evidence location, or, (2) a found perpetuated location?
THE MONUMENT WILL BE DISTURBED BY ROAD CONSTRUCTION. CORNER PERPETUATED AS FOUND.

D) Describe any material discrepancy between the location of the corner as restored or reestablished and the location of that corner as previously restored or reestablished by distance and direction. Show the discrepancy on the plan view drawing under (a), above. Show the distances between the corner as previously restored or reestablished and (1) the corner as restored or reestablished, and (2) to at least 4 of the witness monuments shown on the drawing in (a), above.

(E) Was the corner reestablished through lost corner proportionate methods? If so, show the method, including the directions and distances to other public land survey corners used as evidence or used for proportioning the corner location.
NO

I, Donald Barnes, hereby certify that the corner points as identified by the corner code index were, in a field survey on, JULY 31, 1995, established, re-established, monumented, re-monumented, recovered or restored as expressed below and in conformance with the regulations and rules as required in the current manual of survey instructions of the United States Department of Interior, Bureau of Land Management.

seal

Donald Barnes

EMBOSS LAND SURVEYOR SEAL

8-30-95

COUNTY SURVEYOR FILING DATA

Date of computer entry _____

Date microfilmed _____

Number of included sheets _____
CORNER CODE

A-E 7.08 REQUIREMENT