

Paper weight-110# (minimum)

Black nonfading ink required

# U.S. PUBLIC LAND SURVEY MONUMENT RECORD

For Public Land Survey Corners In:  
T. 4 N. R. 11 E. 4th P.M.  
CORNER CODE INDEX

WI ADMINISTRATIVE CODE A-E 7.08 REQUIREMENT  
REV 10/23/2004 USMONREC.DWG

A	1	2	3	4	5	6	7	8	9	10	11	12	13	14	15	16	17	18	19	20	21	22	23	24	25	A
B																										B
C																										C
D																										D
E																										E
F																										F
G																										G
H																										H
J																										J
K																										K
L																										L
M																										M
N																										N
O																										O
P																										P
Q																										Q
R																										R
S																										S
T																										T
U																										U
V																										V
W																										W
X																										X
Y																										Y
Z																										Z

PORTER TWP  
ROCK COUNTY WI

IF AVAILABLE  
ROCK COUNTY COORDINATES PREFERRED

North \_\_\_\_\_ Elev. \_\_\_\_\_

East \_\_\_\_\_

Hor. Datum \_\_\_\_\_ Vert. Datum \_\_\_\_\_

LATITUDE \_\_\_\_\_ ELLIPS. HT. \_\_\_\_\_

LONGITUDE \_\_\_\_\_

NAD83(91) \_\_\_\_\_ NETWORK ADJ. YR \_\_\_\_\_

GPS (X) \_\_\_\_\_ TRAVERSE (X) \_\_\_\_\_

BASED ON THE FOLLOWING CONTROL:

◆ CORNER MONUMENT

○ WITNESS MONUMENT

(a)

BEARINGS ARE BASED ON: \_\_\_\_\_

FIELD BOOK \_\_\_\_\_ PAGE # \_\_\_\_\_

SHEET 1 OF 2

SHOW A PLAN VIEW DRAWING DEPICTING THE CORNER MONUMENT AND SURROUNDING PHYSICAL FEATURES, INCLUDING THE EXCAVATION AREA AND DEPTH.

PLANNING & ZONING COMMITTEE ADOPTED THIS FORM ON 12/2/1982

CORNER CODE R-23

**PO592 N1/4CORSEC25**

*(B) Describe any record evidence, monument evidence, occupational evidence, testimonial evidence or any other material evidence you considered, and whether the monument was found or placed.*

- 1833 (OCT 29) HARRISON EAST ON RANDOM BET SECS 24 & 25  
T4N R11E 4<sup>TH</sup> MER**
- 2640 QUARTER SEC COR (TEMPORARY)**
- 5329.5 INT E BDY IN E EDGE OF PRAIRIE 34.32' S OF  
POST LAND ROLLING 1<sup>ST</sup> RATE PRAIRIE COVERED  
WITH GRASS & WEEDS  
COR. WEST BET SECS 24 & 25**
- 2664.75 QUARTER SEC COR. {SET A POST & RAISED A  
MOUND OF EARTH & SODS.  
5329.5 INT. SEC COR.**
- 1961 BATTERMAN VOL 4 PG 94 DUG HOLE 20X20X3 AT S 1/4 COR  
SEC 24. NOTE: BADGER PIPE LINE DESTROYED CORNER.  
DRAWING SHOWS CENTER OF HOLE @ CENTER OF RD & ON  
LINE WITH E/W FENCE LINES.**
- 1977 BARNES VOL 5 PG 263 LOCATED IN PATCH SPOT WHERE  
FORMER COUNTY SURVEYOR DUG & FD NOTHING. SET  
ALUM. MON. & REFERENCED SAME. 29' +/- WEST OF CENTER  
OF CULVERT. SET NE COR ON LINE WITH E 1/4 COR SEC 25  
& E 1/4 COR SEC 24 AT CENTER OF RD. THIS AGREED WITH  
THE FOLLOWING: 1) ROAD RECORDS STATES GIBBS LAKE  
RD WAS STAKED OUT. BEGINNING WITH THE NE COR SEC 25  
ON JAN 22, 1848 2) OCCUPATION TO THE NORTH 3)  
OCCUPATION TO THE WEST. DOES NOT AGREE WITH THE  
ORIGINAL GOV. SURV REC OR THE SINGLE PROPORTIOANTE  
DISTANCE FROM THE E 1/4 COR SEC 25 & E 1/4 COR SEC  
24.**
- 1977 BARNES VOL 5 PG 265 SET ALUM. MON.**
- 1977 BARNES VOL 5 PG 267 2694.46 TO NW & NE CORNERS OF  
SEC 25**
- 2000 LATHROP GSM VOL 23 PG 440 FD N 1/4 COR SEC 25, NB9-  
36-55E 2694.44 TO ALUM @ NE COR SEC 25.**
- 2003 LATHROP #14651 FD ALUM. MON 2694.52 TO ALUM @ NW  
COR SEC 24**

**I FD ALUM MON & SE & SW REFERENCE PIPES.**

*C) Was the corner restored through acceptance of (1) an obliterated evidence location, or, (2) a found perpetuated location?*

**ACCEPTED ALUM. MON.**

*D) Describe any material discrepancy between the location of the corner as restored or reestablished and the location of that corner as previously restored or reestablished by distance and direction. Show the discrepancy on the plan view drawing under (a), above. Show the distances between the corner as previously restored or reestablished and (1) the corner as restored or reestablished, and (2) to at least 4 of the witness monuments shown on the drawing in (a), above.*

*(E) Was the corner reestablished through lost corner proportionate methods? If so, show the method, including the directions and distances to other public land survey corners used as evidence or used for proportioning the corner location.*

**I, Donald Barnes, hereby certify that the corner location as identified by the corner code index was determined by me under my direction and control and that this U.S. Public Land Survey Monument Record is correct and complete to the best of my knowledge and belief.**

*Donald Barnes*

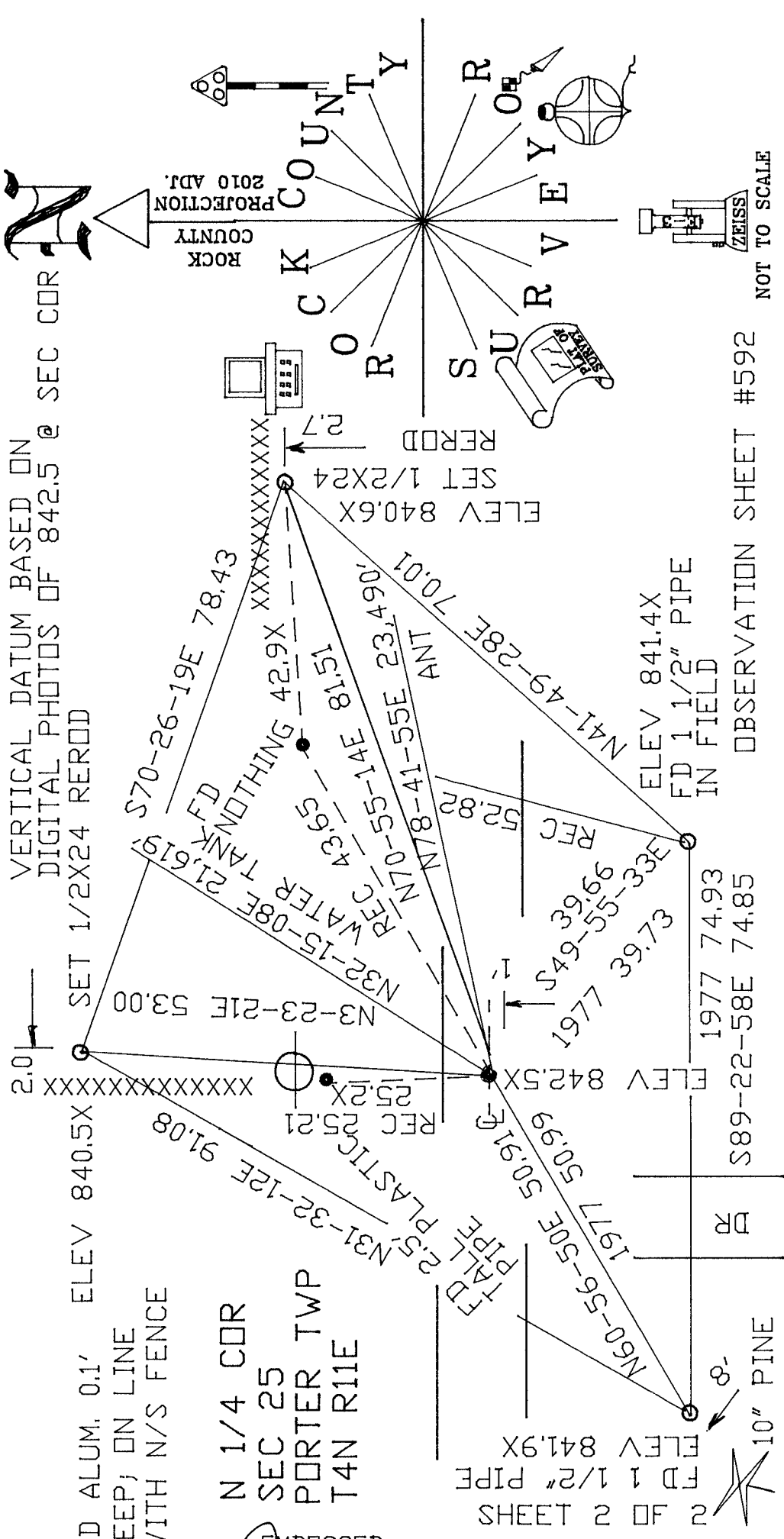
*Barnes*

*APR 28, 2010* A.E. 7.08 REQUIREMENT

SHEET 1 OF 2

CORNER CODE **R-23**

VERTICAL DATUM BASED ON  
DIGITAL PHOTOS OF 842.5 @ SEC COR



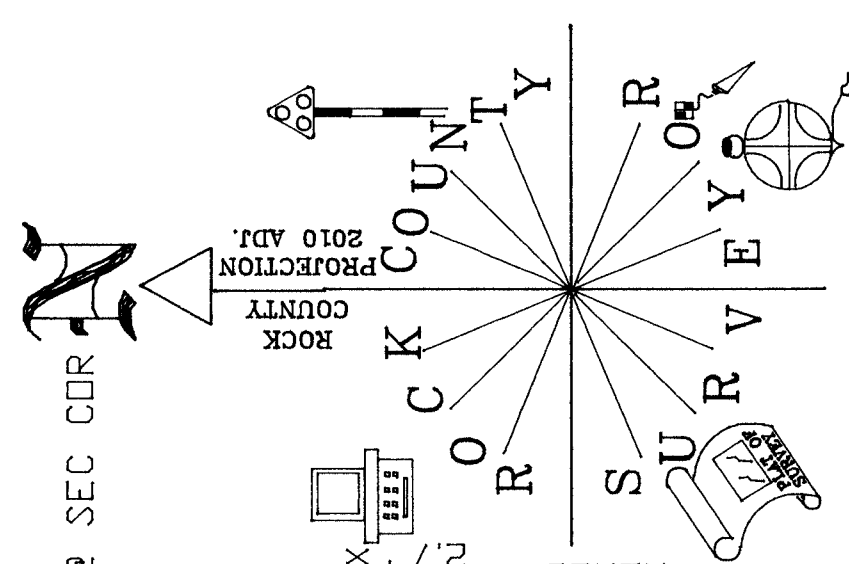
FD ALUM. 0.1' DEEP; ON LINE WITH N/S FENCE

N 1/4 COR  
SEC 25  
PORTER TWP  
T4N R11E

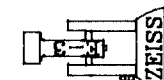
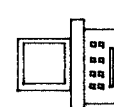
EMBOSSSED SEAL  
*[Signature]*  
APR 28, 2010

R-23

ZEISS  
OBSERVATION SHEET #592  
NOT TO SCALE



ROCK COUNTY  
PROJECTION 2010 ADJ.



OBSERVATION SHEET #592

NOT TO SCALE