

U.S. PUBLIC LAND SURVEY MONUMENT RECORD

For Public Land Survey Corners In:

WI ADMINISTRATIVE CODE A-E 7.08 REQUIREMENT

T. 4 N. R. 11 E. 4th P.M.

REV 10/23/2004

USMONREC.DWG

CORNER CODE INDEX

PORTER TWP
ROCK COUNTY WI

IF AVAILABLE
ROCK COUNTY COORDINATES PREFERRED

A	1	2	3	4	5	6	7	8	9	10	11	12	13	14	15	16	17	18	19	20	21	22	23	24	25	A
B																										B
C																										C
D																										D
E																										E
F																										F
G																										G
H																										H
J																										J
K																										K
L																										L
M																										M
N																										N
O																										O
P																										P
Q																										Q
R																										R
S																										S
T																										T
U																										U
V																										V
W																										W
X																										X
Y																										Y
Z																										Z

North _____ Elev. _____

East _____

Hor. Datum _____ Vert. Datum _____

LATITUDE _____ ELLIPS. HT. _____

LONGITUDE _____

NAD83(91) _____ NETWORK ADJ. YR _____

GPS (X) _____ TRAVERSE (X) _____

BASED ON THE FOLLOWING CONTROL:

PLACE MONUMENT SYMBOL AT PROPER LOCATION ON ABOVE INDEX

CORNER MONUMENT

WITNESS MONUMENT

(a)

BEARINGS ARE BASED ON: -----

FIELD BOOK _____ PAGE # _____

SHEET 1 OF 3

SHOW A PLAN VIEW DRAWING DEPICTING THE CORNER MONUMENT AND SURROUNDING PHYSICAL FEATURES, INCLUDING THE EXCAVATION AREA AND DEPTH.

PLANNING & ZONING COMMITTEE ADOPTED THIS FORM ON 12/2/1982

CORNER CODE J-23

PO552

(B) Describe any record evidence, monument evidence, occupational evidence, testimonial evidence or any other material evidence you considered, and whether the monument was found or placed.

1835 HARRISON OCT 29TH EAST ON RAND. BET. SECS 12 & 13

1056 TRAIL CRS NORTH

2640 TEMPY 1/4 SEC COR.

4290 LEAVE PRAIRIE & ENTER SMALL & SCATTERING OF
TIMBER OF BURR & RED O.

5273.4 INT. E. BDY 39.6' SOUTH OF POST. LAND FOR THE
1ST 3/4 OF A MILE ?HANDSOME ROLLING PRAIRIE 1ST
RATE. REMAINDER ROLLING 2ND RATE WITH RED &
BUR OAK.

COR. WEST BET SECS 12 & 13

2636.70 QUARTER SEC COR.

SET A POST & RAISED A MOUND ON GROUND HIGH
& ROLLING

5273.40 INT. SEC COR OCT 29TH 1835

1871 RUGER VOL 2 PG 63 COR. LOST. ESTABLISHED IT FROM
SECTION CORNERS SET LIMESTONE 20X8X4. VAR INDICATES
IT IS ON STRAIGHT LINE BETWEEN THE SW & SE CORNERS OF
SEC 12.

1965 BATTERMAN VOL 4 PG 223 FD 4"X8"L.S. SET BY RUGER. 5'
EAST OF N/S FENCE & 1' NORTH OF E/W FENCE, WPL 2647.80
TO SW COR SEC 12. CALLS FOR A RUGER DISTANCE OF
2642.81 FROM THE SW TO S 1/4 COR OF SEC 12. NOTE: WORK
DONE BY SURVEYOR'S OF WPL.

FOUND LIMESTONE 4"X9"X18" WITH FLAT SIDES, 10" DEEP, AND IN
VERTICAL POSITION. NO OTHER STONES IN AREA PLACED 5
MAGNETS ON EASTSIDE OF BOTTOM OF STONE. PLACED CARSONITE
POST 1' SOUTH & 1' EAST OF L.S. FENCE LINES ARE GONE.
RETRACED FENCE LINES BY LOCATING METAL FENCE POSTS BELOW
GRADE, WHICH POST LINES ARE IN HARMONY WITH RECORD CALL
DISTANCES. STONE APPEARED NOT TO BE DISTURBED. DISTANCE
TO SW COR OF SEC 12 IS 2.28' SHORTER THAN THE 1965 RECORD
WPL DISTANCE. USING BATTERMAN'S GPS COORDINATES FOR THE
SE COR OF SEC 12 INDICATES THE LS IS ON LINE WITH THE SW & SE
CORNERS OF SEC 12 AS CALLED FOR BY RUGER. THE DISTANCES
ALSO INDICATES THE L.S. IS ALMOST MIDWAY BETWEEN THE SE &
SW CORNERS OF SEC 12.

C) Was the corner restored through acceptance of (1) an obliterated evidence location, or, (2) a found perpetuated location?

ACCEPTED FD LIMESTONE AS PLACED BY RUGER IN 1871.

D) Describe any material discrepancy between the location of the corner as restored or reestablished and the location of that corner as previously restored or reestablished by distance and direction. Show the discrepancy on the plan view drawing under (a), above. Show the distances between the corner as previously restored or reestablished and (1) the corner as restored or reestablished, and (2) to at least 4 of the witness monuments shown on the drawing in (a), above.

NONE

(E) Was the corner reestablished through lost corner proportionate methods? If so, show the method, including the directions and distances to other public land survey corners used as evidence or used for proportioning the corner location.

I, **Donald Barnes**, hereby certify that the corner location as identified by the corner code index was determined by me under my direction and control and that this U.S. Public Land Survey Monument Record is correct and complete to the best of my knowledge and belief.

Seal

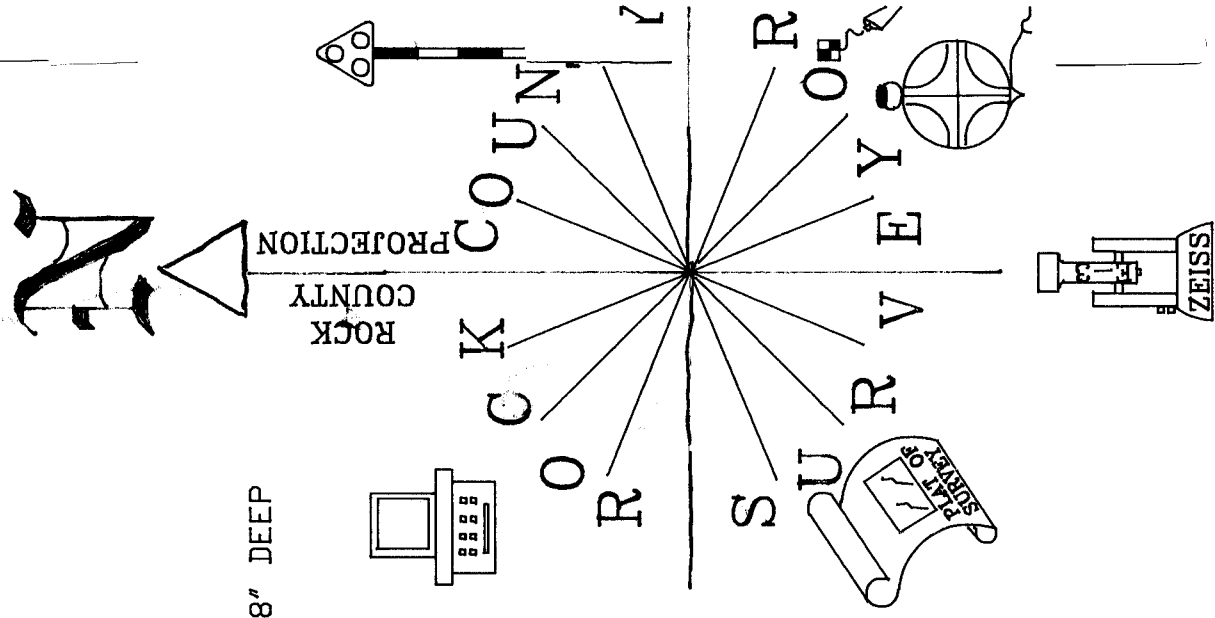
Donald Barnes
Emboss

SEP 19, 2005

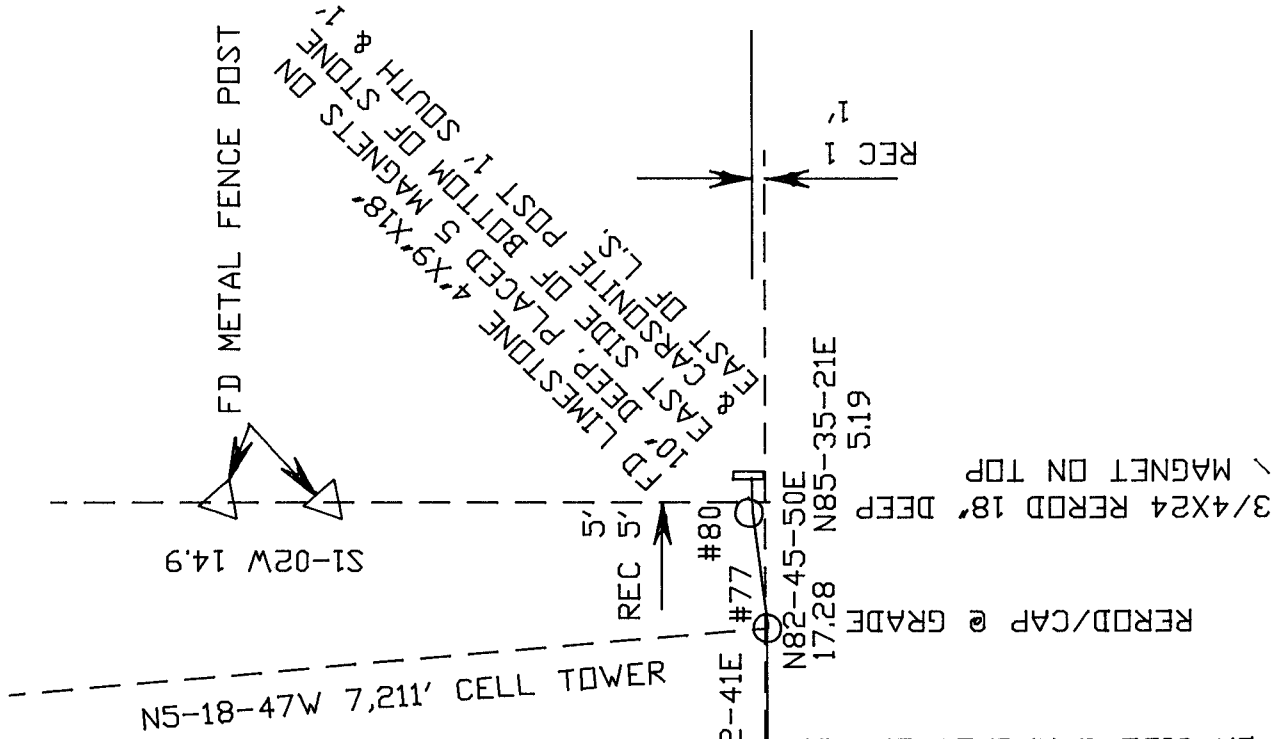
SHEET 1 OF 3

CORNER CODE **J-23**

A.E. 7.08 REQUIREMENT



NOT TO SCALE
OBSERVATION SHEETS



#79 TO S 1/4 COR N88-33-30E 119.82'
#78 TO S 1/4 COR N87-09-30E 47.86'
#77 TO S 1/4 COR N83-24-57E 22.46'

FD METAL FENCE POST
& 8" DEEP
PLACED 3/4X24" RERDD
0.3' NORTH OF POST &
PLACED MAGNET ON RERDD

FD METAL FENCE POST
8" DEEP
PLACED 3/4X24" RERDD
ON SIDE & MAGNET ON TOP

RERDD/CAP @ GRADE
17.28 N82-45-50E

3/4X24 RERDD 18" DEEP
MAGNET ON TOP
5.19 N85-35-21E

FD LIMESTONE 4"X9"X18"
& CARBONITE POST 1" SOUTH & 1"
EAST SIDE OF L.S.
10" DEEP, PLACED 5 MAGNETS ON
EAST SIDE OF BOTTOM OF STONE

FD METAL FENCE POST 8" DEEP

S1-02W 14.9

SW COR SEC 12

EMBOSSED SEAL
Ronald Barnes
SEP 19 2005

S 1/4 COR
SEC 12
PORTER TWP
T4N R11E

2 OF 3

5-23

1871 RUGER VOL 2 PG 63 2699.73

1270.20 WPL VOL 4 PG 223 1070.20

SEC 12

FD TIES

1871 RUGER VOL 2 PG 63 VAR 6-35

1965 BATTERMAN VOL 4 PG 223 2596

1871 RUGER VOL 2 PG 63 VAR5-55 2589.18

1833 MULLETT 2640
1871 RUGER VOL 2 PG 63 VAR 7-27
1965 WPL VOL 4 PG 223 2642.90
2000 NORTHRUP GCM VOL 24 PG 45 2643.01

SEC 7

18971 RUGER VOL 2 PG 63 VAR 5-55 2644.12

N00-09-03W 2755.86

TRUE NORTH
FILE P0552
VAR OF NEEDLE 8-45
SOUTH LINE SEC 36
NOTED DIAGRAM
SEP 15 1833
VAR OF NEEDLE 8-40
e SE COR SEC 36
SEP 20 1833

FD 1" PIPE

FD L.S.

1871 RUGER VOL 2 PG 63 VAR 6-35 2696.92

1833 MULLETT 2640
1871 RUGER VOL 2 PG 63 VAR 7-27
1965 WPL VOL 4 PG 223 2642.90
1971 ELY 1322.3
2003 BATTERMAN GPS
318-302.60 464,109.46

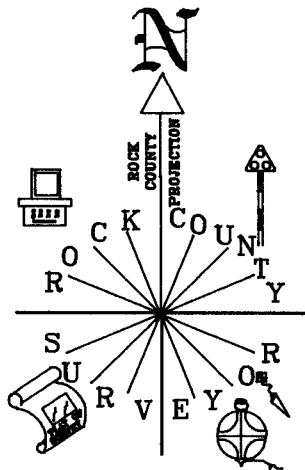
SEC 13
PORTER TWP

1835 HARRISON 2636.70
1871 RUGER VOL 2 PG 63 VAR 6-49
1965 WPL VOL 4 PG 223 2647.80
RUGER VOL4-223 2642.81
N88-57-49E 2645.52

1835 HARRISON 2636.70
1871 RUGER VOL 2 PG 63 VAR 6-49
USING REC GPS COORD. N88-58E 2645.9X'

1833 MULLETT 2640
1968 LEE #14337 2656.77
1973 LEE #1286 2657.38

SEC 18



NOT TO SCALE

EMBOSSED SEAL

Ronald Boush
Sep 19 2005

J-23