

U.S. PUBLIC LAND SURVEY MONUMENT RECORD

For Public Land Survey Corners in:

WI ADMINISTRATIVE CODE A-E 7.08 REQUIREMENT

T. 1N., R. 11E

CORNER CODE INDEX

NEWARK TWP

ROCK COUNTY WI

IF AVAILABLE
ROCK COUNTY COORDINATES PREFERRED

A	1	2	3	4	5	6	7	8	9	10	11	12	13	14	15	16	17	18	19	20	21	22	23	24	25
B																									
C	6																								
D		5																							
E			A																						
F				3																					
G					2																				
H						1																			
I	1																								
J		8																							
K			9																						
L				10																					
M					11																				
N						12																			
O							13																		
P								14																	
Q									15																
R										16															
S											17														
T												18													
U													19												
V														20											
W															21										
X																22									
Y																	23								
Z																		24							
																			25						
																				26					
																					27				
																						28			
																							29		
																								30	
																									31
																									32
																									33
																									34
																									35
																									36

PLACE MONUMENT SYMBOL AT PROPER LOCATION ON ABOVE INDEX

North _____ Elev. _____

East _____

Hor. Datum _____ Vert. Datum _____

LATITUDE _____ ELLIPS. HT. _____

LONGITUDE _____

GPS (X) _____ TRAVERSE (X) _____

BASED ON THE FOLLOWING CONTROL:

CORNER MONUMENT

WITNESS MONUMENT

(a)

BEARINGS ARE BASED ON:

FIELD BOOK _____ PAGE # _____

SHEET 1 OF 3

SHOW A PLAN VIEW DRAWING DEPICTING THE CORNER MONUMENT AND SURROUNDING PHYSICAL FEATURES, INCLUDING THE EXCAVATION AREA AND DEPTH.

PLANNING & ZONING COMMITTEE ADOPTED THE ABOVE FORM ON 12/2/1982

CORNER CODE A-7

NE504

(B) Describe any record evidence, monument evidence, occupational evidence, testimonial evidence or any other material evidence you considered, and whether the monument was found or placed.

- 1833 MULLET PG 163 WEST ON SOUTH SIDE SECTION 32 (2N R11E)
- 66 LEAVE PRAIRIE AND ENTER MARSH
 - 330 STREAM 2.64' C SOUTH
 - 759 LEAVE MARSH AND ENTER WOOD LAND
 - 1188 ENTER PRAIRIE
 - 2640 SET QUARTER SECTION POST IN PRAIRIE SECTION POST IN PRAIRIE AND MADE A MOUND
 - 5280 SET POST CORNER SECTION 31 & 32 IN PRAIRIE AND MADE MOUND LAND MOST ROLLING DRY PRAIRIE FIRST RATE. BY OBSERVATION VAR FOUND 7-35. SEP 6 TH, 1833.
- 1868 LOCKE PLYMOUTH TWP REMONUMENTATION SEP 11 1868
PG 70 WEST ON SOUTH LINE SEC 32 VAR 6-20
- 0 SET OFF 12.87' SOUTH
 - 406.89 CENTER OF BRIDGE OVER CREEK 7.92'
 - 2640 SET TEMPORARY 1/4 COR. COR. LOST
 - 5321.91 INTERSECTED WEST BOUNDARY 60.39' SOUTH OF COR. FOUND OLD STAKE & WHERE B.T.S WERE DUG OUT. COR. IN CENTER OF HIGHWAY RUNNING SOUTH & ON SOUTH SIDE OF E & W HIGHWAY
 - 2660.96 SET 1/4 COR 20.96' WEST AND 36.63' NORTH OF TEMPORARY 1/4 COR. COR IN HIGHWAY. VAR CORRECTED (WHOLE LINE) 5-49
- 1871 COLLINS REMONUMENTATION NOTES
PG 211 EAST ON NORTH LINE OF 5 VARIATION 5-43
- 5386.92 SET STONE FOR CORNER OF 4 & 5 36.96' EAST OF PLYMOUTH CORNER.
BACK
 - 2693.46 SET 1/4 STONE 5.94' EAST OF PLYMOUTH 1/4 COR.
- 1875 RUGER VOL 2 PG 193 FD STONE MON. @ S 1/4 COR SEC 32. USED TO SUBDIVIDE SEC 32.
- 1878 RUGER VOL 2 PG 244 STONE MON. VAR 4-30 TO NW COR SEC 4; VAR 4-30 2688.18 TO NE COR SEC 5, 2525.16 TO CENTER SEC 5, & 5133.48 TO S 1/4 COR SEC 5.
- 1957 BATTERMAN VOL 3 PG 521 STONE MON. NOT FD @ S 1/4 COR SEC 32 & N 1/4 COR SEC 5. N/S FENCE @ S 1/4 COR SEC 32 IS ON NORTH SIDE OF RD. N/S FENCE @ N 1/4 COR SEC 5 IS SOUTH OF RD AND EAST OF S 1/4 COR SEC 32.
- 1967 BATTERMAN VOL 4 PG 313 FOUND 1" PIPE BY SHIMEALL & REFERENCED SAME. N 1/4 COR SEC 5 IS ON LINE WITH N/S FENCE ON SOUTH SIDE OF RD & N/S FENCE ON NORTH SIDE OF RD IS TO THE WEST. MAP CALLS FOR THE PIPE AS THE N 1/4 COR SEC 5.
- 1976 BARNES VOL 5 PG 171 FOUND 1" PIPE AS SET BY SHIMEALL. SET BERNSTEN MON. & REFERENCED SAME.
- 2000 HOULE MAP#7543 5146.98 TO S 1/4 COR SEC 5, ANGLE OF 89-10-36 AT S 1/4 COR SEC 5 FROM SW COR SEC 5 TO N 1/4 COR SEC 5.

FOUND ALUM. MON. HIGH BANK ON NORTH SIDE OF PVMT INDICATES A LARGE CUT FOR THE ROAD. DUE THIS LARGE CUT, I DID NOT DIG FOR A L.S. @ THE S 1/4 COR SEC 32 PLYMOUTH TWP. THE N 1/4 COR SEC 4 MON IS 0.28' OFF A LINE BETWEEN THE NE & NW CORNERS OF SEC 5 AND IS NOT AT PRORATION WITH COLLIN'S REMONUMENTATION DISTANCES. WITH OUT DISPUTABLE EVIDENCE OF SHIMEALL'S POSITION, I ACCEPTED THE FOUND MONUMENT.

C) Was the corner restored through acceptance of (1) an obliterated evidence location, or, (2) a found perpetuated location?

NO RECORD OF CUT L.S FOUND AT N 1/4 COR SEC 5. ACCEPTED FOUND PIPE AS N 1/4 COR SEC 5.

SHEET 1 OF 3

David Barnes
6-18-01

EA-7

U.S. PUBLIC LAND SURVEY MONUMENT RECORD

For Public Land Survey Corners in:

WI ADMINISTRATIVE CODE A-E 7.08 REQUIREMENT

T. 1 N., R. 11 E

CORNER CODE INDEX

A	1	2	3	4	5	6	7	8	9	10	11	12	13	14	15	16	17	18	19	20	21	22	23	24	25
B																									
C	6						5				A			3				2						1	
D																									
E																									
F																									
G	1						8				9			10				11						12	
H																									
I																									
J																									
K																									
L	13						11				16			15				14						13	
M																									
N																									
O																									
P	18						20				21			22				23						24	
Q																									
R																									
S																									
T	30						29				28			27				26						25	
U																									
V																									
W																									
X	31						32				33			34				35						36	
Y																									
Z																									

NEWARK TWP

ROCK COUNTY WI

IF AVAILABLE
ROCK COUNTY COORDINATES PREFERRED

North _____ Elev. _____

East _____

Hor. Datum _____ Vert. Datum _____

LATITUDE _____ ELLIPS. HT. _____

LONGITUDE _____

GPS (X) _____ TRAVERSE (X) _____

BASED ON THE FOLLOWING CONTROL:

PLACE MONUMENT SYMBOL AT PROPER LOCATION ON ABOVE INDEX

CORNER MONUMENT

WITNESS MONUMENT

(a)

BEARINGS ARE BASED ON:

FIELD BOOK _____ PAGE # _____

SHEET 2 OF 3

SHOW A PLAN VIEW DRAWING DEPICTING THE CORNER MONUMENT AND SURROUNDING PHYSICAL FEATURES, INCLUDING THE EXCAVATION AREA AND DEPTH.

PLANNING & ZONING COMMITTEE ADOPTED THE ABOVE FORM ON 12/2/1982

CORNER CODE A-7

D) Describe any material discrepancy between the location of the corner as restored or reestablished and the location of that corner as previously restored or reestablished by distance and direction. Show the discrepancy on the plan view drawing under (a), above. Show the distances between the corner as previously restored or reestablished and (1) the corner as restored or reestablished, and (2) to at least 4 of the witness monuments shown on the drawing in (a), above.

I, Donald Barnes, hereby certify that the corner location as identified by the corner code index was determined by me under my direction and control and that this U.S. Public Land Survey Monument Record is correct and complete to the best of my knowledge and belief.

seal

emboss

Number of included sheets **2**

2 OF 3

CORNER CODE **-A-7**

Donald Barnes
6-18-01

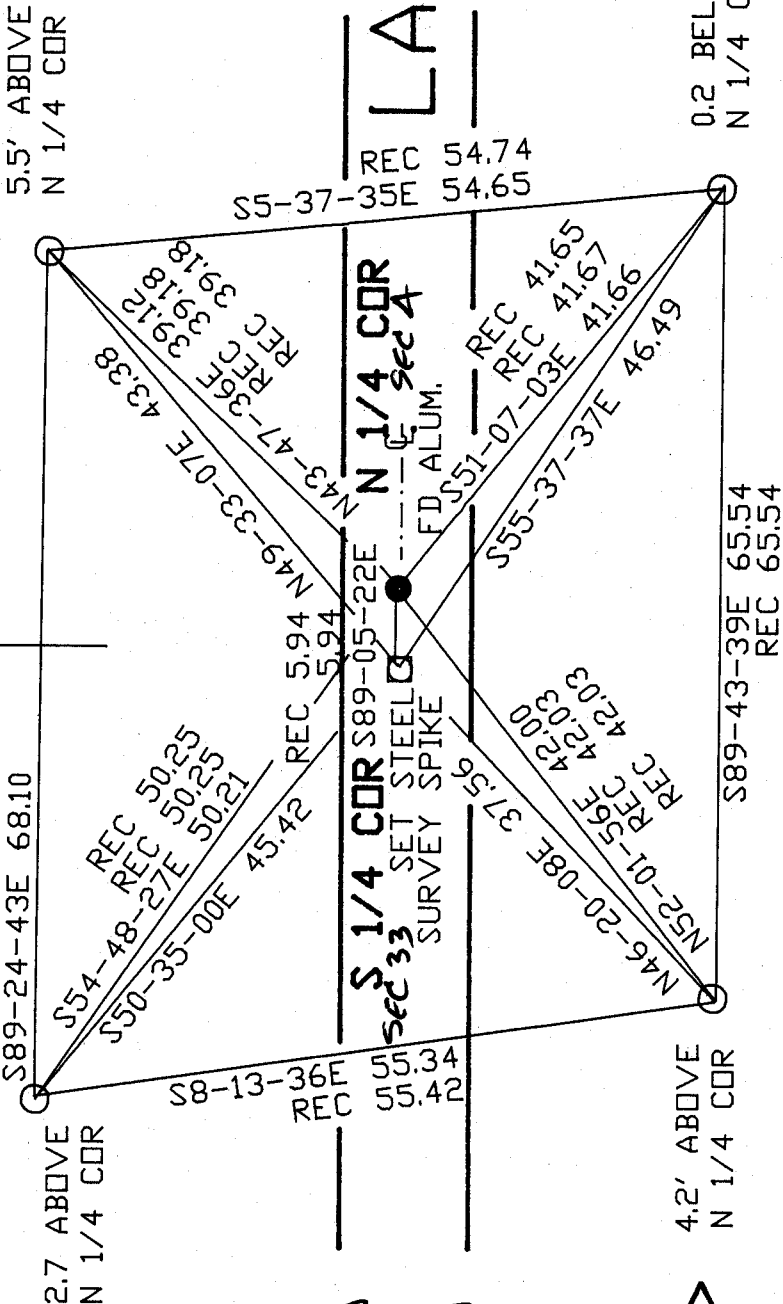
A-E 7.08 REQUIREMENT

6-18-01
 Embossed Seal
 Donald Burns

PLYMOUTH TWP
 T2N R11E

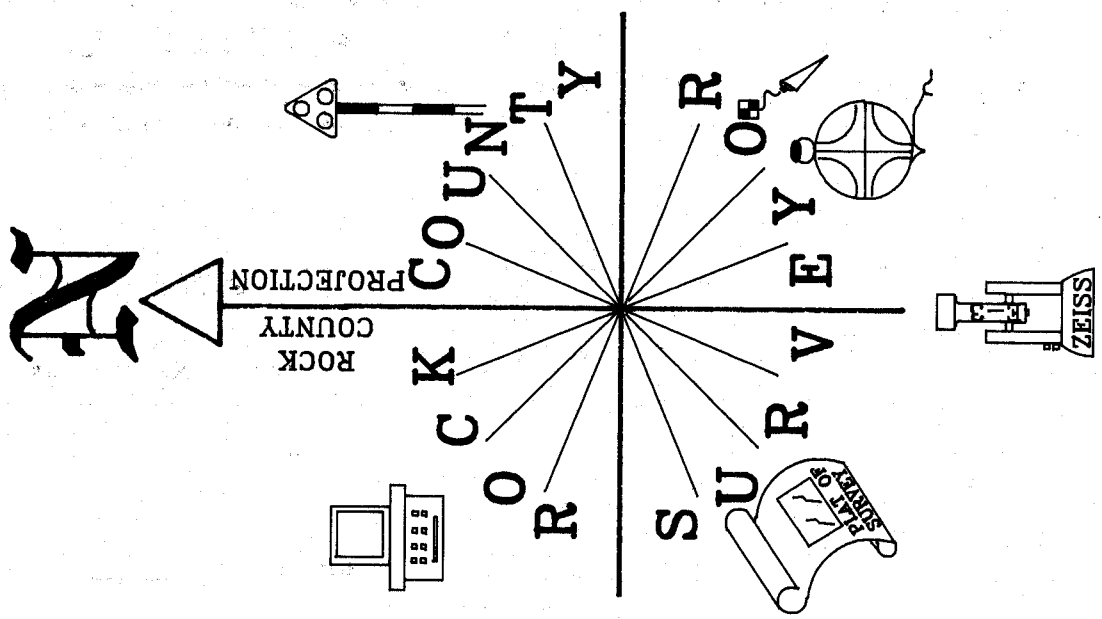
LAIRD RD

NEWARK TWP
 T1N R11E



XXXXXXXXXXXX

3 OF 3



- FD 1' PIPE
- FD ALUM. MON. N 1/4 COR
- SET STEEL SURVEY SPIKE
- S 1/4 COR

OBSERVATION SHEET #504

