

U.S. PUBLIC LAND SURVEY MONUMENT RECORD

For Public Land Survey Corners in:

WI ADMINISTRATIVE CODE A-E 7.08 REQUIREMENT

T. 1N., R. 11E

CORNER CODE INDEX

A	1	2	3	4	5	6	7	8	9	10	11	12	13	14	15	16	17	18	19	20	21	22	23	24	25
B																									
C	6																								
D		5																							
E																									
F																									
G	1																								
H		8																							
I			9																						
J																									
K																									
L	18																								
M		11																							
N			16																						
O																									
P																									
Q	19																								
R		20																							
S			21																						
T																									
U																									
V																									
W																									
X																									
Y																									
Z																									

NEWARK TWP

ROCK COUNTY WI

IF AVAILABLE
ROCK COUNTY COORDINATES PREFERRED

North _____ Elev. _____

East _____

Hor. Datum _____ Vert. Datum _____

LATITUDE _____ ELLIPS. HT. _____

LONGITUDE _____

GPS (X) _____ TRAVERSE (X) _____

BASED ON THE FOLLOWING CONTROL:

PLACE MONUMENT SYMBOL AT PROPER LOCATION ON ABOVE INDEX

CORNER MONUMENT

WITNESS MONUMENT

(a)

BEARINGS ARE BASED ON:

FIELD BOOK _____ PAGE # _____

SHEET 1 OF 2

SHOW A PLAN VIEW DRAWING DEPICTING THE CORNER MONUMENT AND SURROUNDING PHYSICAL FEATURES, INCLUDING THE EXCAVATION AREA AND DEPTH.

PLANNING & ZONING COMMITTEE ADOPTED THE ABOVE FORM ON 12/2/1982

CORNER CODE G13

NE537

(B) Describe any record evidence, monument evidence, occupational evidence, testimonial evidence or any other material evidence you considered, and whether the monument was found or placed.

- 1834 MILLER PG 23 NORTH BETWEEN 9 & 10
2030.16 HICKORY 12 IN
2244 ENTER PRAIRIE
2640 SET 1/4 SEC POST. YELLOW OAK 15 IN S13W 429'; YELLOW OAK 15 IN S4E 4.69'
5280 SET POST IN MOUND OF EARTH AND SOD COR OF SEC 3,4,9, 10 LAND 2ND RATE SOUTH 1/2 LEVEL TIMBERED WITH OAK & HICKORY OAK & HAZEL U.G. (UNDER GROWTH). NORTH HALF ROLLING PRAIRIE.
- 1871 COLLINS REMONUMENTATION
PG 170 NORTH BETWEEN 9 & 10 VARIATION 5-57
2677.62 SET 1/4 STONE IN PLACE OF STAKE SET BY MESSER SAID BY SHOEMAKER TO HAVE BEEN THERE 20 YEARS
CONTINUED NORTH VARIATION 5-30
5344.68 SET STONE FOR CORNER OF 3,4,9,10 IN INTERSECTION OF HIGHWAY.
- 1882 HOLMES VOL 2 PG 348 CALLS FOR MON BUT STATES NOTHING ABOUT IT.
2662.44 TO NE COR SEC 9, 2641.32 TO CENTER OF SEC 9, & 5282.64 TO W 1/4 COR SEC 9.
- 1963 BATTERMAN VOL 4 PG 163 FD CUT STONE MON. & REFERENCED SAME. SOME DISTANCES ARE MISSING OR INCORRECT. VOL 4 PG 163 OF БЕЛОIT RECORDS SHOWS THE CORRECT ONE.
- 1996 LEUENBERGER CSM 19 PG 393 1338.26 FROM SW COR SEC 10 TO W 1/16TH COR OF SW 1/4 SEC 10

FD PK THAT IS NOT IN HARMONY WITH TIES OF RECORD. ESTABLISHED CORNER AT INTERSECTION OF DISTANCES FROM REFERENCE MONUMENTS. PLACED ALUM. SURVEY SPIKE.

C) Was the corner restored through acceptance of (1) an obliterated evidence location, or, (2) a found perpetuated location?

CORNER RESTORED THROUGH ACCEPTANCE OF OBLITERATED EVIDENCE LOCATION.

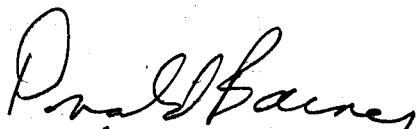
D) Describe any material discrepancy between the location of the corner as restored or reestablished and the location of that corner as previously restored or reestablished by distance and direction. Show the discrepancy on the plan view drawing under (a), above. Show the distances between the corner as previously restored or reestablished and (1) the corner as restored or reestablished, and (2) to at least 4 of the witness monuments shown on the drawing in (a), above.

SEE DIAGRAM FOR DISCREPANCY OF 0.16'.

(E) Was the corner reestablished through lost corner proportionate methods? If so, show the method, including the directions and distances to other public land survey corners used as evidence or used for proportioning the corner location.

I, Donald Barnes, hereby certify that the corner location as identified by the corner code index was determined by me under my direction and control and that this U.S. Public Land Survey Monument Record is correct and complete to the best of my knowledge and belief.

seal

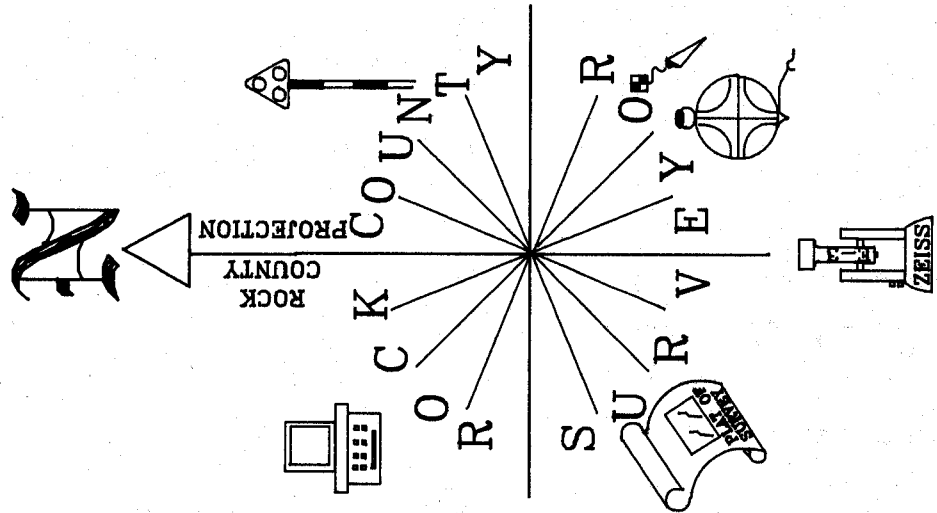

emboss

Number of included sheets 1

Dec 20, 2000

CORNER CODE G-13

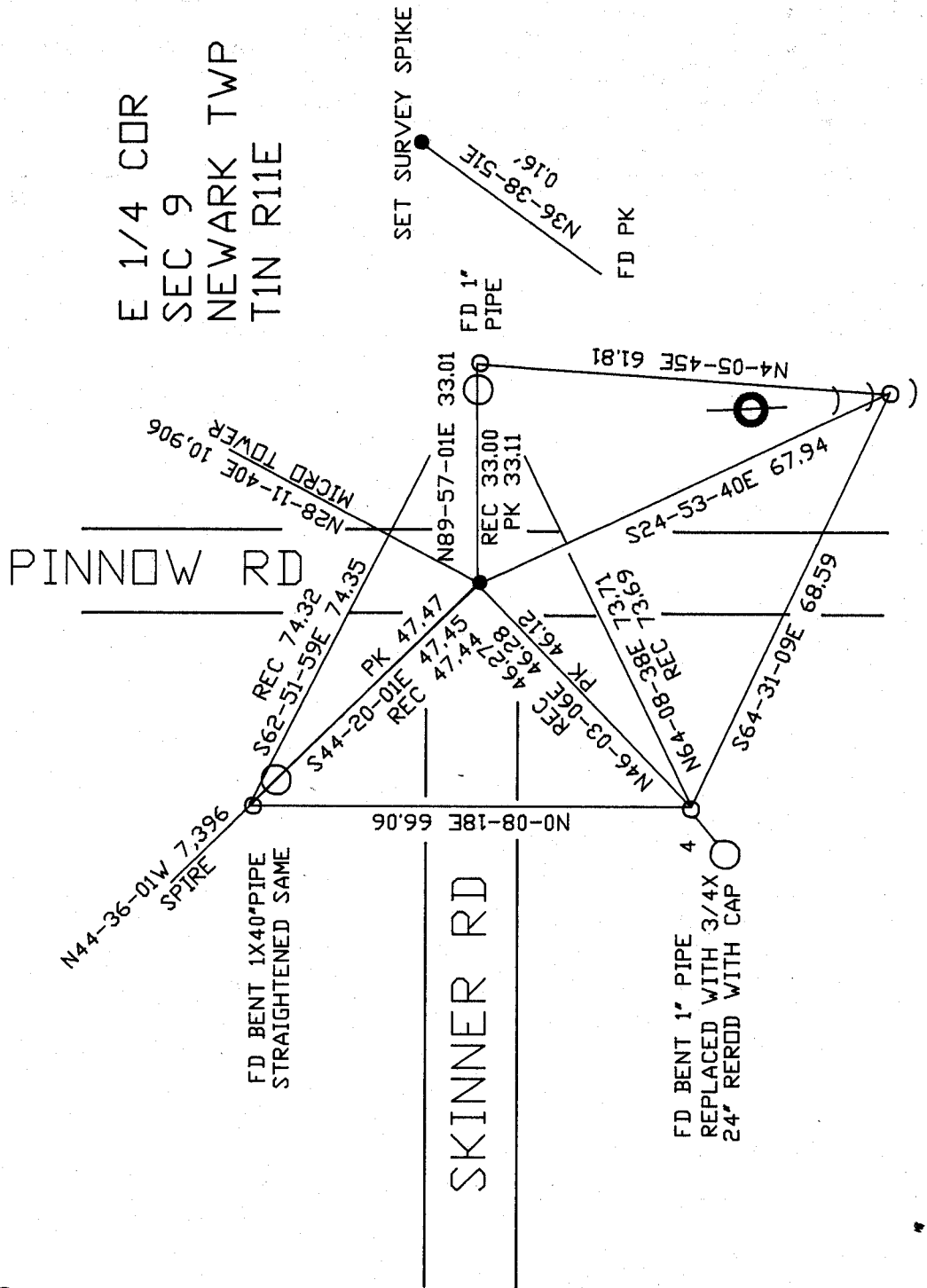
A-E 7.08 REQUIREMENT



OBSERVATION SHEETS 1537

○ ROW POST

E 1/4 COR
 SEC 9
 NEWARK TWP
 T1N R11E



Donald Barnes
 Dec 20, 2000
 EMBOSSED SEAL

G-13