

U.S. PUBLIC LAND SURVEY MONUMENT RECORD

For Public Land Survey Corners in:

WI ADMINISTRATIVE CODE A-E 7.08 REQUIREMENT

T. 1N., R. 11E

CORNER CODE INDEX

NEWARK TWP
ROCK COUNTY WI

IF AVAILABLE
ROCK COUNTY COORDINATES PREFERRED

A	2	3	4	5	6	7	8	9	10	11	12	13	14	15	16	17	18	19	20	21	22	23	24	25
B	6																							
C		5																						
D			4																					
E				3																				
F					2																			
G						1																		
H	1																							
I		8																						
J			9																					
K				10																				
L					11																			
M						12																		
N							13																	
O								14																
P									15															
Q										16														
R											17													
S												18												
T													19											
U														20										
V															21									
W																22								
X																	23							
Y																		24						
Z																			25					

North _____ Elev. _____

East _____

Hor. Datum _____ Vert. Datum _____

LATITUDE _____ ELLIPS. HT. _____

LONGITUDE _____

GPS (X) _____ TRAVERSE (X) _____

BASED ON THE FOLLOWING CONTROL:

PLACE MONUMENT SYMBOL AT PROPER LOCATION ON ABOVE INDEX

CORNER MONUMENT

WITNESS MONUMENT

(a)

BEARINGS ARE BASED ON:

FIELD BOOK _____ PAGE # _____

SHEET 1 OF 2

SHOW A PLAN VIEW DRAWING DEPICTING THE CORNER MONUMENT AND SURROUNDING PHYSICAL FEATURES, INCLUDING THE EXCAVATION AREA AND DEPTH.

PLANNING & ZONING COMMITTEE ADOPTED THE ABOVE FORM ON 12/2/1982

CORNER CODE X-~~111~~ 009

NE616

(B) Describe any record evidence, monument evidence, occupational evidence, testimonial evidence or any other material evidence you considered, and whether the monument was found or placed.

- 1834 MILLER PG 25 NORTH BETWEEN SECS 32 & 33
 - 1254 BUR OAK 12 IN DIAMETER
 - 2640 SET 1/4 SEC POST BUR OAK 12 IN S1-30W 69.3'; WHITE OAK 22 IN N30E 56.76'
 - 4798.2 BUR OAK 18 IN DIAMETER
 - 5280 SET POST COR OF SEC 28,29,32,33 YELLOW OAK 12 S60W 57.42'; YELLOW OAK 12 N5E 178.86' LAND GENTLY ROLLING 2ND RATE TIMBER SCATTERING OAK & HICKORY SOIL SANDY
- 1865 LOCKE VOL 1 PG 227 & #3274 FOUND OLD STAKE VAR 4-45 2638.6'8 TO CENTER OF SEC 33 & 5277.36' TO E 1/4 COR SEC 33.
- 1871 COLLINS REMONUMENTATION NOTES
 - PG 175 NORTH BETWEEN 32 & 33 VARIATION 5
 - 2748.24 INTERSECT 1/4 LINE 11.22' WEST OF CORNER WEST OF CORNER SET 1/4 STONE BY STUMP OF WITNESS TREE. CORRECTED VARIATION 5-15
 - CONTINUED NORTH VARIATION 5-15
 - 5507.04 INTERSECT SECTION LINE 28.38' WEST OF CORNER SET STONE FOR CORNER OF 28,29,32, & 33 BY WITNESS TREE & STUMP. CORRECTED VARIATION 5-52
- 1965 BATTERMAN VOL 4 PG 233 REFERENCED CORNER & VOID OVER DRAWING. FD R.R. SPIKES 3' NORTH & 3' EAST OF W 1/4 COR. C. SHIMEALL FD CUT STONE MON. & SET R.R.
- 1971 BATTERMAN VOL 4 PG 233 REFERENCED CORNER. 1" PIPE OVER STONE IN MON. BOX. BOOK 152A P 55
- 1974 SHIMEALL #3244 1319.8 SOUTH TO 1/16TH COR
- 1981 BARNES VOL 6 PG 205 FD PK NAIL, ON SURFACE OF PVMT FD LARGE PK NAIL 0.1' DEEP FD I.P. IN MON BOX 0.2' DEEP. SET NOTHING PUT PK NAILS 3.00' SW 7 3.00 SE OF COR. FILLED OVER WITH ASPHALT. 16.35' EAST OF PK @ CENTER OF PVMT. INT.
- 1988 COMBS CSM 13 PG 371 2661.36 TO CENTER OF SEC 32
- 1994 KREBS CSM 17 PG 275 2633.52 TO CENTER OF SEC 31

FD 1" PIPE IN MON. BOX 1' SOUTH OF CENTER OF PVMT. & 16.5' EAST OF CENTER OF N/S ROAD.

C) Was the corner restored through acceptance of (1) an obliterated evidence location, or, (2) a found perpetuated location?

ACCEPTED FOUND PERPETUATED LOCATION

D) Describe any material discrepancy between the location of the corner as restored or reestablished and the location of that corner as previously restored or reestablished by distance and direction. Show the discrepancy on the plan view drawing under (a), above. Show the distances between the corner as previously restored or reestablished and (1) the corner as restored or reestablished, and (2) to at least 4 of the witness monuments shown on the drawing in (a), above.

(E) Was the corner reestablished through lost corner proportionate methods? If so, show the method, including the directions and distances to other public land survey corners used as evidence or used for proportioning the corner location.

I, Donald Barnes, hereby certify that the corner location as identified by the corner code index was determined by me under my direction and control and that this U.S. Public Land Survey Monument Record is correct and complete to the best of my knowledge and belief.

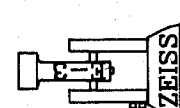
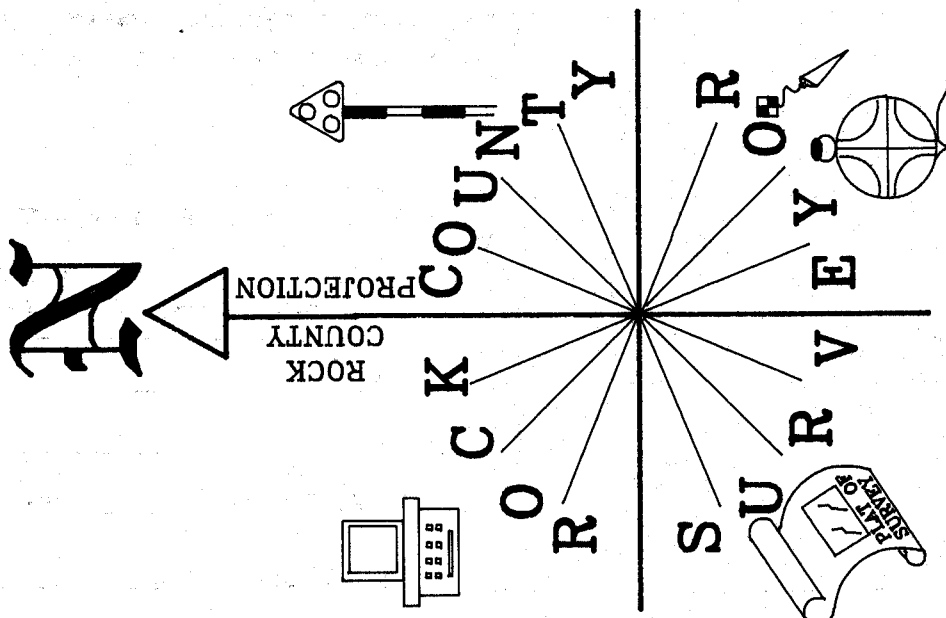
seal

Number of included sheets 1

emboss
Donald Barnes
6-19-01

CORNER CODE X-9

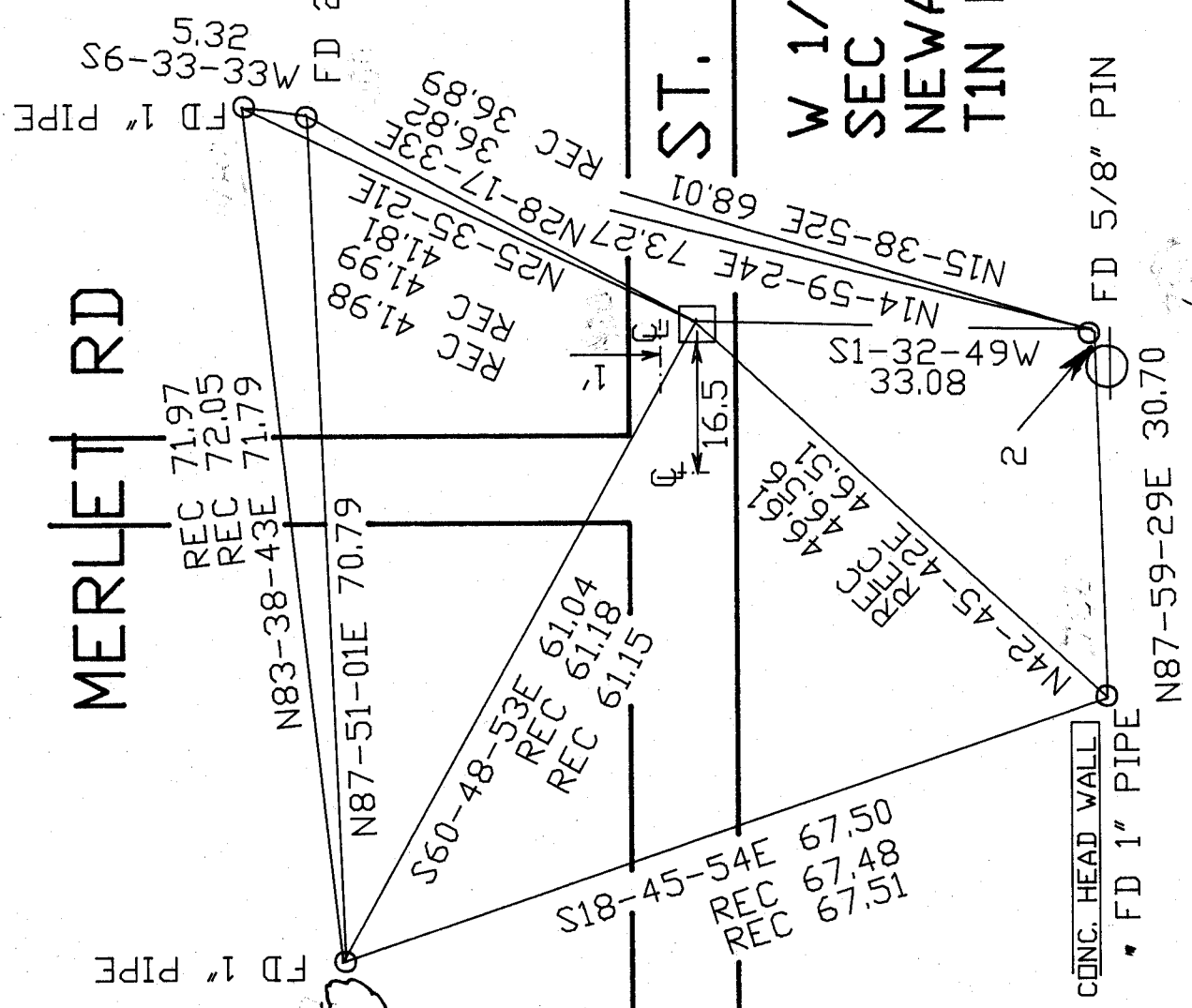
A-E 7.08 REQUIREMENT



OBSERVATION SHEET #767

WOODS

9/6-43W
0.05
FD PK



6-19-01
EMBEDDED
SEAL
Baird

36" DAK

2 of 2

X-19