

U.S. PUBLIC LAND SURVEY MONUMENT RECORD

For Public Land Survey Corners in:
T. 1 N., R. 11 E

WI ADMINISTRATIVE CODE A-E 7.08 REQUIREMENT

CORNER CODE INDEX

A	2	3	4	5	6	7	8	9	10	11	12	13	14	15	16	17	18	19	20	21	22	23	24	25
B	6																							
C		5																						
D																								
E																								
F	1																							
G		8																						
H																								
I																								
J																								
K	18																							
L		17																						
M																								
N																								
O																								
P	19																							
Q		20																						
R																								
S																								
T	30																							
U		29																						
V																								
W																								
X	31																							
Y		32																						
Z																								

NEWARK TWP

ROCK COUNTY WI

IF AVAILABLE
ROCK COUNTY COORDINATES PREFERRED

North _____ Elev. _____

East _____

Hor. Datum _____ Vert. Datum _____

LATITUDE _____ ELLIPS. HT. _____

LONGITUDE _____

GPS (X) _____ TRAVERSE (X) _____

BASED ON THE FOLLOWING CONTROL:

PLACE MONUMENT SYMBOL AT PROPER LOCATION ON ABOVE INDEX

CORNER MONUMENT

WITNESS MONUMENT

(a)

BEARINGS ARE BASED ON:

FIELD BOOK _____ PAGE # _____

SHEET 1 OF 3

SHOW A PLAN VIEW DRAWING DEPICTING THE CORNER MONUMENT AND SURROUNDING PHYSICAL FEATURES, INCLUDING THE EXCAVATION AREA AND DEPTH.

PLANNING & ZONING COMMITTEE ADOPTED THE ABOVE FORM ON 12/2/1982

CORNER CODE Z-9/10

NE 4054

(B) Describe any record evidence, monument evidence, occupational evidence, testimonial evidence or any other material evidence you considered, and whether the monument was found or placed.

- 1832 LYON PG 2 EAST ALONG THE SOUTH SIDE OF SEC 32 VAR 6-50E
 - 2640 SET POST FOR 1/4 SECTION CORNER. BLACK OAK 5 N75 1/2E 87.78' & BLACK OAK 13 N58W 66
 - 5280 SET A POST FOR CORNER TO SECTIONS 32 & 33. BLACK OAK 6 N37E 44.88 BLACK OAK 6 N16 1/2W 37.62'.
 - PG 2 EAST ALONG THE SOUTH SIDE OF SEC 33. VAR 6-50E
 - 2640 SET POST FOR 1/4 SECTION CORNER. BLACK OAK 6 N70E 148.5' BUR OAK 15 N82W 114.18'
 - 5280 SET A POST FOR CORNER TO SECTIONS 33 & 34 BUR OAK 12 N14E 31.02 BUR OAK 15 N34W 87.12'
- 1834 MILLER PG 25 NORTH BETWEEN SECS 32 & 33
 - 1254 BUR OAK 12 IN DIAMETER
 - 2640 SET 1/4 SEC POST BUR OAK 12 IN S1-30W 69.3'; WHITE OAK 22 IN N30E 56.76'
 - 4798.2 BUR OAK 18 IN DIAMETER
 - 5280 SET POST COR OF SEC 28, 29, 32, 33 YELLOW OAK 12 S60W 57.42'; YELLOW OAK 12 N5E 178.86' LAND GENTLY ROLLING 2ND RATE TIMBER SCATTERING OAK & HICKORY. SOIL SANDY
- 1840 SPAULDING ILLINOIS ORIG SURVEYOR (JAN & FEB)

PAGE 2

MEASURING CHAIN COMPARED WITH THE STANDARD CHAIN AND FOUND TO BE OF THE RIGHT LENGTH ADJUST MY COMPASS AT 6-53 VARIATION EAST TO AGREE WITH THE 3RD PRINCIPAL MERIDIAN ALONG THE EAST BOUNDARY OF TOWNSHIP 28 NORTH RANGE 11 EAST OF THE 4TH PRINCIPAL MERIDIAN.

FIELD BOOK PG 182 & 183

NORTH BETWEEN SECTIONS 22 & 23 TOWNSHIP 29 NORTH RANGE 11 EAST OF THE 4TH PRINCIPAL MERIDIAN VAR 6-53 EAST

- 204.6 A BLACK OAK 14 INCHES IN DIAMETER
- 1738.44 INTERSECTED THE SOUTH BOUNDARY OF WISCONSIN TERRITORY & NORTH BOUNDARY OF THE STATE OF ILLINOIS 671.22' EAST OF THE CORNER TO SECTIONS 32 & 33 TOWNSHIP ONE NORTH RANGE 11 EAST OF THE 4TH PRINCIPAL MERIDIAN AND AT SAID INTERSECTION SET A POST FOR CORNER TO SECTIONS 22 & 23 TOWNSHIP 29 NORTH RANGE 1 EAST FROM WHICH POST A BLACK OAK 6 INCHES IN DIAMETER BEARS S59-15E 9.9' & A WHITE OAK 24 INCHES IN DIAMETER BEARS S48W 53.46' DISTANT LAND VERY BROKEN & POOR BLACK & WHITE OAK BARRENS NOT FIT FOR CULTIVATION

1871 COLLINS REMONUMENTATION NOTES

NORTH BETWEEN 32 & 33 VARIATION 5

- 2748.24 INTERSECT 1/4 LINE 11.22' WEST OF CORNER WEST OF CORNER SET 1/4 STONE BY STUMP OF WITNESS TREE. CORRECTED VARIATION 5-15

CONTINUED NORTH VARIATION 5-15

- 5507.04 INTERSECT SECTION LINE 28.38' WEST OF CORNER SET STONE FOR CORNER OF 28,29,32, & 33 BY WITNESS TREE & STUMP. CORRECTED VARIATION 5-52

WEST ON SOUTH LINE OF 32 VARIATION 5

- 5282.64 SET STONE FOR CORNER OF 31, 32. BY STUMP OF WITNESS TREES.

Donald Barnes

SHEET 1 OF 3 CORNER CODE Z-9/10

7-11-01

BACK TO

2641.32 SET 1/4 STONE

WEST ON SOUTHLINE OF 33 VARIATION 5-30

2651.88 INTERSECT 1/4 LINE 5.28' SOUTH OF CORNER SET 1/4 STONE BY WITNESS TREE CORRECTED 5-37

CONTINUED WEST VARIATION 6

5297.16 INTERSECT SECTION LINE 4.62' SOUTH OF CORNER SET STONE FOR CORNER OF 32 & 33 BY STUMPS OF WITNESS TREES CORRECTED VARIATION 6-06

1965 BATTERMAN VOL 4 PG 233 FD CUT STONE MON 3-11-67 SKETCH SHOWS AT ILL. COR. @ FENCE INT. FD CON MON @ ILL COR. ILL. COR IS 671.2' EAST.

FD CONC. MON. WITH NAIL IN CENTER. MON IS IN E/W FENCE LINE IN WOODS & AT GRADE. SET CARSONITE POST. DISTANCE TO SE COR SEC 32 IS IN HARMONY WITH ORIG. GOV. SURVEY

C) Was the corner restored through acceptance of (1) an obliterated evidence location, or, (2) a found perpetuated location?

DID NOT ACCEPT NOR REJECT MON. DISTANCE TO SW COR SEC 32 IS IN HARMONY WITH ORIG GOV. DISTANCE.

D) Describe any material discrepancy between the location of the corner as restored or reestablished and the location of that corner as previously restored or reestablished by distance and direction. Show the discrepancy on the plan view drawing under (a), above. Show the distances between the corner as previously restored or reestablished and (1) the corner as restored or reestablished, and (2) to at least 4 of the witness monuments shown on the drawing in (a), above.

(E) Was the corner reestablished through lost corner proportionate methods? If so, show the method, including the directions and distances to other public land survey corners used as evidence or used for proportioning the corner location.

I, Donald Barnes, hereby certify that the corner location as identified by the corner code index was determined by me under my direction and control and that this U.S. Public Land Survey Monument Record is correct and complete to the best of my knowledge and belief.

Donald
Barnes

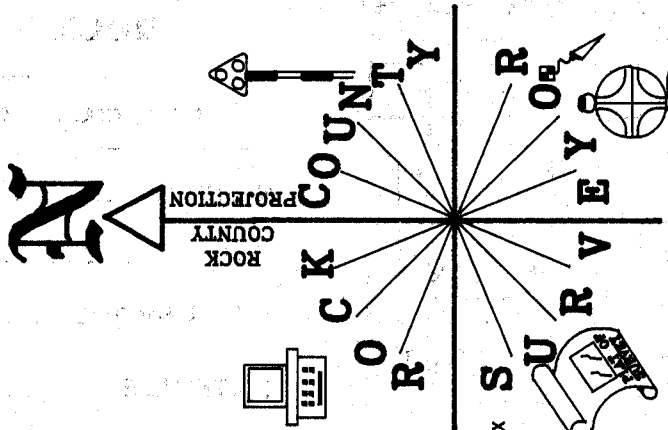
seal

7-11-01
emboss

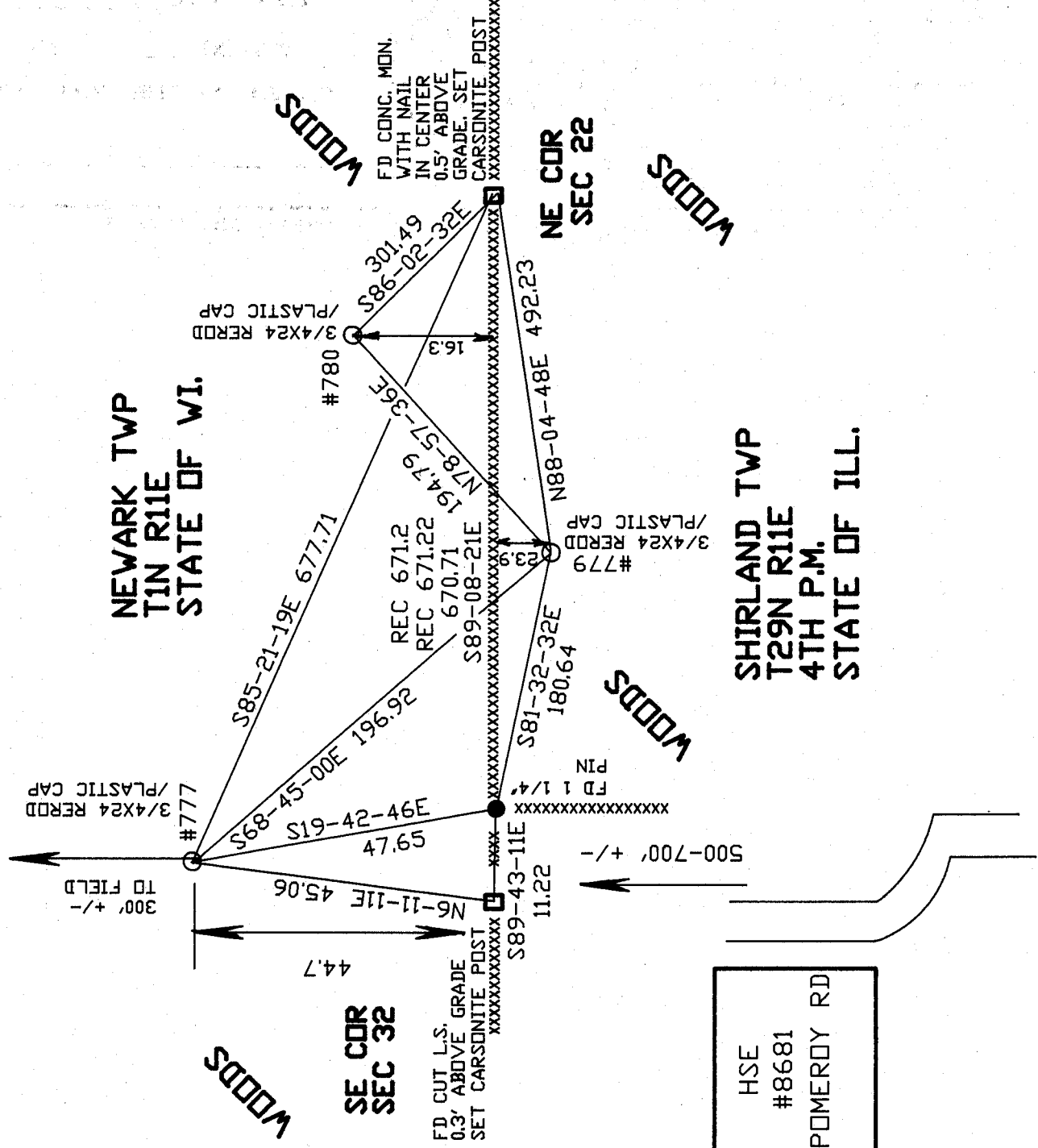
SHEET 2 OF 3

CORNER CODE Z-9/10

A-E 7.08 REQUIREMENT



ZEISS
NOT TO SCALE



NEWARK TWP
T1N R11E
STATE OF WI.

SHIRLAND TWP
T29N R11E
4TH P.M.
STATE OF ILL.

Denny Barnes
7-11-01

EMBOSSED
SEAL

3 OF 3

7-9/10