

U.S. PUBLIC LAND SURVEY MONUMENT RECORD

For Public Land Survey Corners in:

WI ADMINISTRATIVE CODE A-E 7.08 REQUIREMENT

T. 1 N., R. 11 E

CORNER CODE INDEX

| | | | | | | | | | | | | | | | | | | | | | | | | | |
|---|----|---|---|---|---|---|---|---|---|----|----|----|----|----|----|----|----|----|----|----|----|----|----|----|----|
| A | 1 | 2 | 3 | 4 | 5 | 6 | 7 | 8 | 9 | 10 | 11 | 12 | 13 | 14 | 15 | 16 | 17 | 18 | 19 | 20 | 21 | 22 | 23 | 24 | 25 |
| B | | | | | | | | | | | | | | | | | | | | | | | | | |
| C | 6 | | | | | | | | | | | | | | | | | | | | | | | | |
| D | | | | | | | | | | | | | | | | | | | | | | | | | |
| E | | | | | | | | | | | | | | | | | | | | | | | | | |
| F | | | | | | | | | | | | | | | | | | | | | | | | | |
| G | 7 | | | | | | | | | | | | | | | | | | | | | | | | |
| H | | | | | | | | | | | | | | | | | | | | | | | | | |
| J | | | | | | | | | | | | | | | | | | | | | | | | | |
| K | | | | | | | | | | | | | | | | | | | | | | | | | |
| L | 18 | | | | | | | | | | | | | | | | | | | | | | | | |
| M | | | | | | | | | | | | | | | | | | | | | | | | | |
| N | | | | | | | | | | | | | | | | | | | | | | | | | |
| O | | | | | | | | | | | | | | | | | | | | | | | | | |
| P | 19 | | | | | | | | | | | | | | | | | | | | | | | | |
| Q | | | | | | | | | | | | | | | | | | | | | | | | | |
| R | | | | | | | | | | | | | | | | | | | | | | | | | |
| S | | | | | | | | | | | | | | | | | | | | | | | | | |
| T | 30 | | | | | | | | | | | | | | | | | | | | | | | | |
| U | | | | | | | | | | | | | | | | | | | | | | | | | |
| V | | | | | | | | | | | | | | | | | | | | | | | | | |
| W | | | | | | | | | | | | | | | | | | | | | | | | | |
| X | 31 | | | | | | | | | | | | | | | | | | | | | | | | |
| Y | | | | | | | | | | | | | | | | | | | | | | | | | |
| Z | | | | | | | | | | | | | | | | | | | | | | | | | |

NEWARK TWP
ROCK COUNTY WI

IF AVAILABLE
ROCK COUNTY COORDINATES PREFERRED

North _____ Elev. _____

East _____

Hor. Datum _____ Vert. Datum _____

LATITUDE _____ ELLIPS. HT. _____

LONGITUDE _____

GPS (X) _____ TRAVERSE (X) _____

BASED ON THE FOLLOWING CONTROL:

PLACE MONUMENT SYMBOL AT PROPER LOCATION ON ABOVE INDEX

CORNER MONUMENT

WITNESS MONUMENT

(a)

BEARINGS ARE BASED ON:

FIELD BOOK _____ PAGE # _____

SHEET 1 OF 3

SHOW A PLAN VIEW DRAWING DEPICTING THE CORNER MONUMENT AND SURROUNDING PHYSICAL FEATURES, INCLUDING THE EXCAVATION AREA AND DEPTH.

PLANNING & ZONING COMMITTEE ADOPTED THE ABOVE FORM ON 12/2/1982

CORNER CODE 29

NE 625

(B) Describe any record evidence, monument evidence, occupational evidence, testimonial evidence or any other material evidence you considered, and whether the monument was found or placed.

- 1832 LYON *EAST ALONG THE SOUTH SIDE OF SEC 32 VAR 6-50E*
2640 SET POST FOR 1/4 SECTION CORNER. BLACK OAK 5 N75 1/2E
87.78' & BLACK OAK 13 N58W 66
5280 SET A POST FOR CORNER TO SECTIONS 32 & 33. BLACK OAK 6 N37E
44.88 BLACK OAK 6 N16 1/2W 37.62'.

- EAST ALONG THE SOUTH SIDE OF SEC 33. VAR 6-50E*
2640 SET POST FOR 1/4 SECTION CORNER. BLACK OAK 6 N70E 148.5' BUR
OAK 15 N82W 114.18'
5280 SET A POST FOR CORNER TO SECTIONS 33 & 34 BUR OAK 12 N14E
31.02 BUR OAK 15 N34W 87.12'

- 1834 MILLER *NORTH BETWEEN SECS 32 & 33*
1254 BUR OAK 12 IN DIAMETER
2640 SET 1/4 SEC POST BUR OAK 12 IN S1-30W 69.3'; WHITE OAK 22 IN
N30E 56.76'
4798.2 BUR OAK 18 IN DIAMETER
5280 SET POST COR OF SEC 28, 29, 32, 33 YELLOW OAK 12 S60W 57.42';
YELLOW OAK 12 N5E 178.86' LAND GENTLY ROLLING 2ND RATE
TIMBER SCATTERING OAK & HICKORY. SOIL SANDY

- 1840 SPAULDING ILLINOIS ORIG SURVEYOR (JAN & FEB)

PAGE 2

MEASURING CHAIN COMPARED WITH THE STANDARD CHAIN
AND FOUND TO BE OF THE RIGHT LENGTH ADJUST MY COMPASS AT 6-53
VARIATION EAST TO AGREE WITH THE 3RD PRINCIPAL MERIDIAN
ALONG THE EAST BOUNDARY OF TOWNSHIP 28 NORTH RANGE 11 EAST
OF THE 4TH PRINCIPAL MERIDIAN.

FIELD BOOK PG 182 & 183

*NORTH BETWEEN SECTIONS 22 & 23 TOWNSHIP 29 NORTH RANGE
11 EAST OF THE 4TH PRINCIPAL MERIDIAN VAR 6-53 EAST*

- 204.6 A BLACK OAK 14 INCHES IN DIAMETER
1738.44 INTERSECTED THE SOUTH BOUNDARY OF WISCONSIN TERRITORY &
NORTH BOUNDARY OF THE STATE OF ILLINOIS 671.22' EAST OF THE
CORNER TO SECTIONS 32 & 33 TOWNSHIP ONE NORTH RANGE 11 EAST
OF THE 4TH PRINCIPAL MERIDIAN AND AT SAID INTERSECTION SET A
POST FOR CORNER TO SECTIONS 22 & 23 TOWNSHIP 29 NORTH RANGE
1 EAST FROM WHICH POST A BLACK OAK 6 INCHES IN DIAMETER
BEARS S59-15E 9.9' & A WHITE OAK 24 INCHES IN DIAMETER BEARS
S48W 53.46' DISTANT LAND VERY BROKEN & POOR BLACK & WHITE
OAK BARRENS NOT FIT FOR CULTIVATION

- 1871 COLLINS REMONUMENTATION NOTES

NORTH BETWEEN 32 & 33 VARIATION 5

- 2748.24 INTERSECT 1/4 LINE 11.22' WEST OF CORNER WEST OF CORNER
SET 1/4 STONE BY STUMP OF WITNESS TREE. CORRECTED
VARIATION 5-15

CONTINUED NORTH VARIATION 5-15

- 5507.04 INTERSECT SECTION LINE 28.38' WEST OF CORNER SET STONE FOR
CORNER OF 28,29,32, & 33 BY WITNESS TREE & STUMP. CORRECTED
VARIATION 5-52

WEST ON SOUTH LINE OF 32 VARIATION 5

- 5282.64 SET STONE FOR CORNER OF 31, 32. BY STUMP OF WITNESS TREES.
BACK TO

- 2641.32 SET 1/4 STONE

WEST ON SOUTHLINE OF 33 VARIATION 5-30

- 2651.88 INTERSECT 1/4 LINE 5.28' SOUTH OF CORNER SET 1/4 STONE BY
WITNESS TREE CORRECTED 5-37

CORNER CODE **Z-9**

CONTINUED WEST VARIATION 6

5297.16 INTERSECT SECTION LINE 4.62' SOUTH OF CORNER SET STONE FOR
CORNER OF 32 & 33 BY STUMPS OF WITNESS TREES CORRECTED
VARIATION 6-06

1965 BATTERMAN VOL 4 PG 233 FD CUT STONE MON 3-11-67 SKETCH SHOWS AT ILL.
COR. @ FENCE INT. FD CON MON @ ILL COR. ILL. COR IS 671.2' EAST.

FD CUT LIMESTONE.

C) Was the corner restored through acceptance of (1) an obliterated evidence location, or, (2) a found perpetuated location?

ACCEPTED FOUND CUT LIMESTONE.

D) Describe any material discrepancy between the location of the corner as restored or reestablished and the location of that corner as previously restored or reestablished by distance and direction. Show the discrepancy on the plan view drawing under (a), above. Show the distances between the corner as previously restored or reestablished and (1) the corner as restored or reestablished, and (2) to at least 4 of the witness monuments shown on the drawing in (a), above.

NONE. NOTE THE LARGE DIFFERENCE BETWEEN RECORD DISTANCES AND MILLER'S ORIG DISTANCE BETWEEN THE SE AND E ¼ CORNERS OF SEC 32.

(E) Was the corner reestablished through lost corner proportionate methods? If so, show the method, including the directions and distances to other public land survey corners used as evidence or used for proportioning the corner location.

I, Donald Barnes, hereby certify that the corner location as identified by the corner code index was determined by me under my direction and control and that this U.S. Public Land Survey Monument Record is correct and complete to the best of my knowledge and belief.

seal

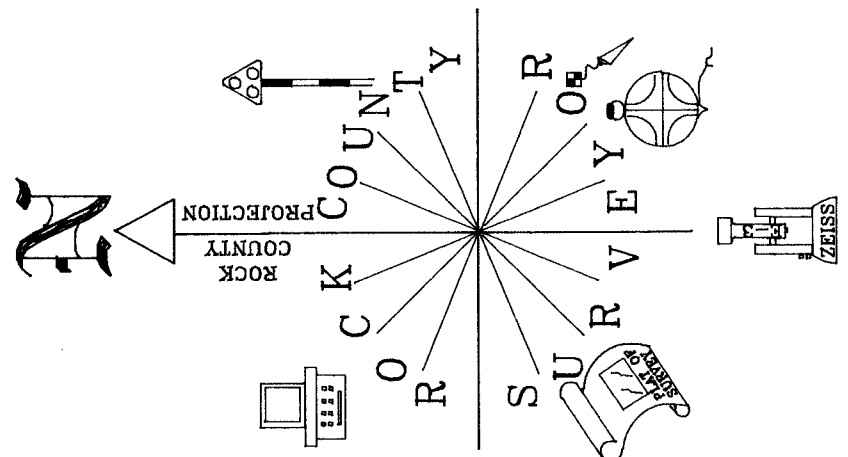
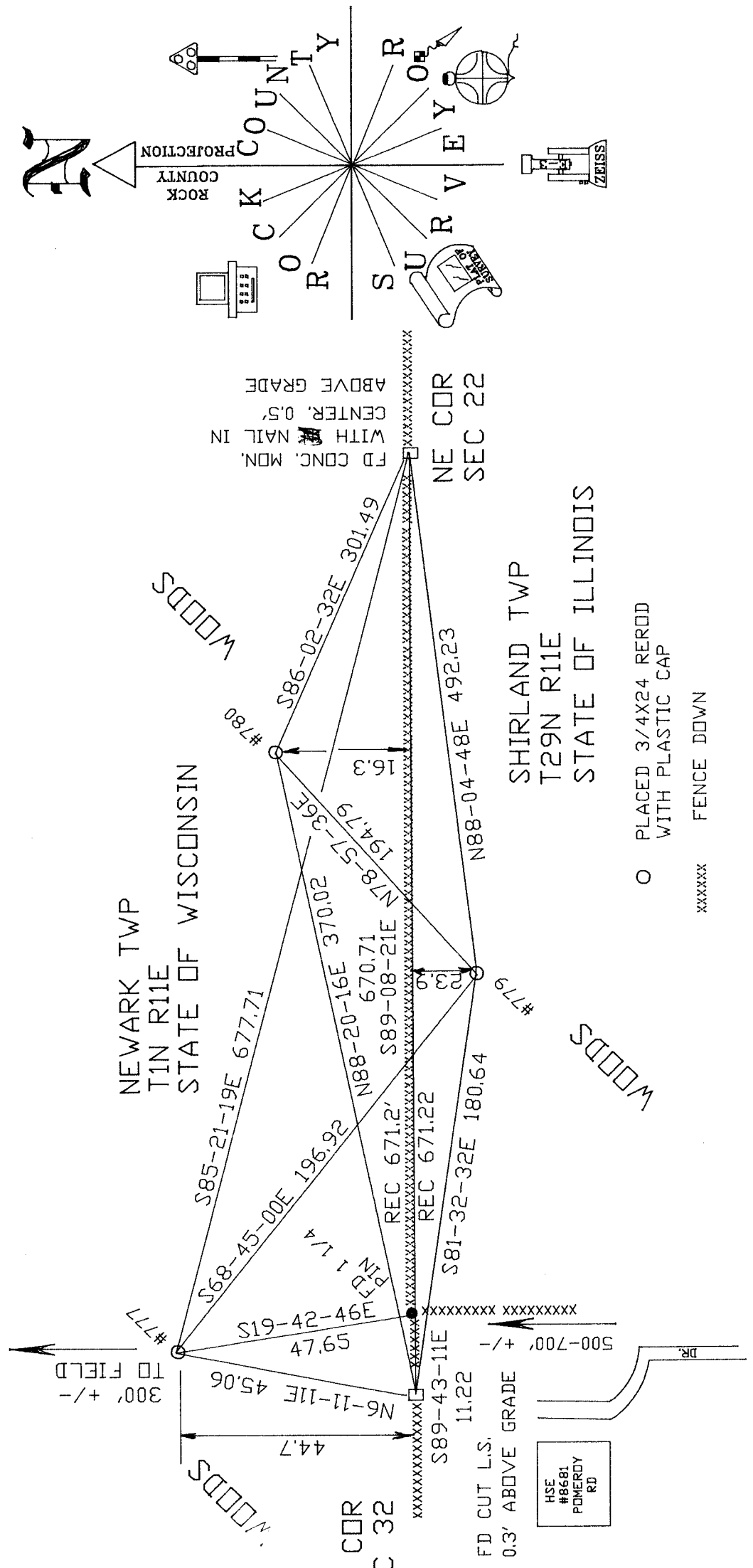
Number of included sheets 2 OF 3

emboss

CORNER CODE Z-9

A-E 7.08 REQUIREMENT

Donald Barnes
Dec 13, 2000



Donald A. Denes
 Dec 13, 2000
 EMBOSSED SEAL