

# U.S. PUBLIC LAND SURVEY MONUMENT RECORD

For Public Land Survey Corners in:

WI ADMINISTRATIVE CODE A-E 7.08 REQUIREMENT

T. 1 N., R. 11 E

### CORNER CODE INDEX

A	2	3	4	5	6	7	8	9	10	11	12	13	14	15	16	17	18	19	20	21	22	23	24	25
B	6	5	4	3	2	1																		
C																								
D																								
E																								
F	1	8	9	10	11	12																		
G																								
H																								
I																								
J																								
K	18	17	16	15	14	13																		
L																								
M																								
N																								
O																								
P	19	20	21	22	23	24																		
Q																								
R																								
S	30	29	28	27	26	25																		
T																								
U																								
V																								
W																								
X	31	32	33	34	35	36																		
Y																								
Z																								

NEWARK TWP  
ROCK COUNTY WI

IF AVAILABLE  
ROCK COUNTY COORDINATES PREFERRED

North \_\_\_\_\_ Elev. \_\_\_\_\_

East \_\_\_\_\_

Hor. Datum \_\_\_\_\_ Vert. Datum \_\_\_\_\_

LATITUDE \_\_\_\_\_ ELLIPS. HT. \_\_\_\_\_

LONGITUDE \_\_\_\_\_

GPS (X) \_\_\_\_\_ TRAVERSE (X) \_\_\_\_\_

BASED ON THE FOLLOWING CONTROL:

PLACE MONUMENT SYMBOL  AT PROPER LOCATION ON ABOVE INDEX

CORNER MONUMENT

WITNESS MONUMENT

(a)

BEARINGS ARE BASED ON:

FIELD BOOK \_\_\_\_\_ PAGE # \_\_\_\_\_

SHEET 1 OF 2

SHOW A PLAN VIEW DRAWING DEPICTING THE CORNER MONUMENT AND SURROUNDING PHYSICAL FEATURES, INCLUDING THE EXCAVATION AREA AND DEPTH.

PLANNING & ZONING COMMITTEE ADOPTED THE ABOVE FORM ON 12/2/1982

CORNER CODE 27

NE624

(B) Describe any record evidence, monument evidence, occupational evidence, testimonial evidence or any other material evidence you considered, and whether the monument was found or placed.

1832 LYON PG 2 EAST ALONG THE SOUTH SIDE OF SEC 32 VAR 6-50E

2640 SET POST FOR 1/4 SECTION CORNER BLACK OAK 5 N75 1/2E 87.78';  
BLACK OAK 13 N58W 66'

5280 SET A POST FOR CORNER TO SECTIONS 32 & 33 BLACK OAK 6 N37E  
44.88'; BLACK OAK 6 N16 1/2W 37.62'

LAND ROLLING 3RD AND THINLY TIMBERED WITH BUR AND BLACK  
OAK

1871 COLLINS REMONUMENTATION NOTES

PG 185 WEST ON SOUTH LINE OF 32 VARIATION 5

5282.64 SET STONE FOR CORNER OF 31, 32. BY STUMPS OF WITNESS TREES.  
BACK TO

2641.32 SET 1/4 STONE

FOUND CUT LIMESTONE 1' SOUTH OF E/W FENCE & ON LINE WITH N/S FENCE.  
PLACED CARSONITE ON SOUTH SIDE OF STONE.

C) Was the corner restored through acceptance of (1) an obliterated evidence location, or, (2) a found perpetuated location?

ACCEPTED FOUND PERPETUATED LOCATION.

D) Describe any material discrepancy between the location of the corner as restored or reestablished and the location of that corner as previously restored or reestablished by distance and direction. Show the discrepancy on the plan view drawing under (a), above. Show the distances between the corner as previously restored or reestablished and (1) the corner as restored or reestablished, and (2) to at least 4 of the witness monuments shown on the drawing in (a), above.

(E) Was the corner reestablished through lost corner proportionate methods? If so, show the method, including the directions and distances to other public land survey corners used as evidence or used for proportioning the corner location.

I, Donald Barnes, hereby certify that the corner location as identified by the corner code index was determined by me under my direction and control and that this U.S. Public Land Survey Monument Record is correct and complete to the best of my knowledge and belief.

seal



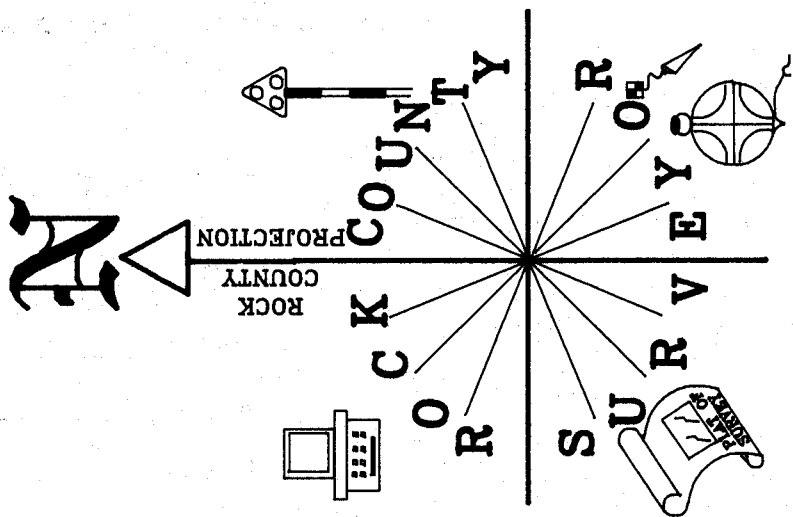
emboss

6-19-01

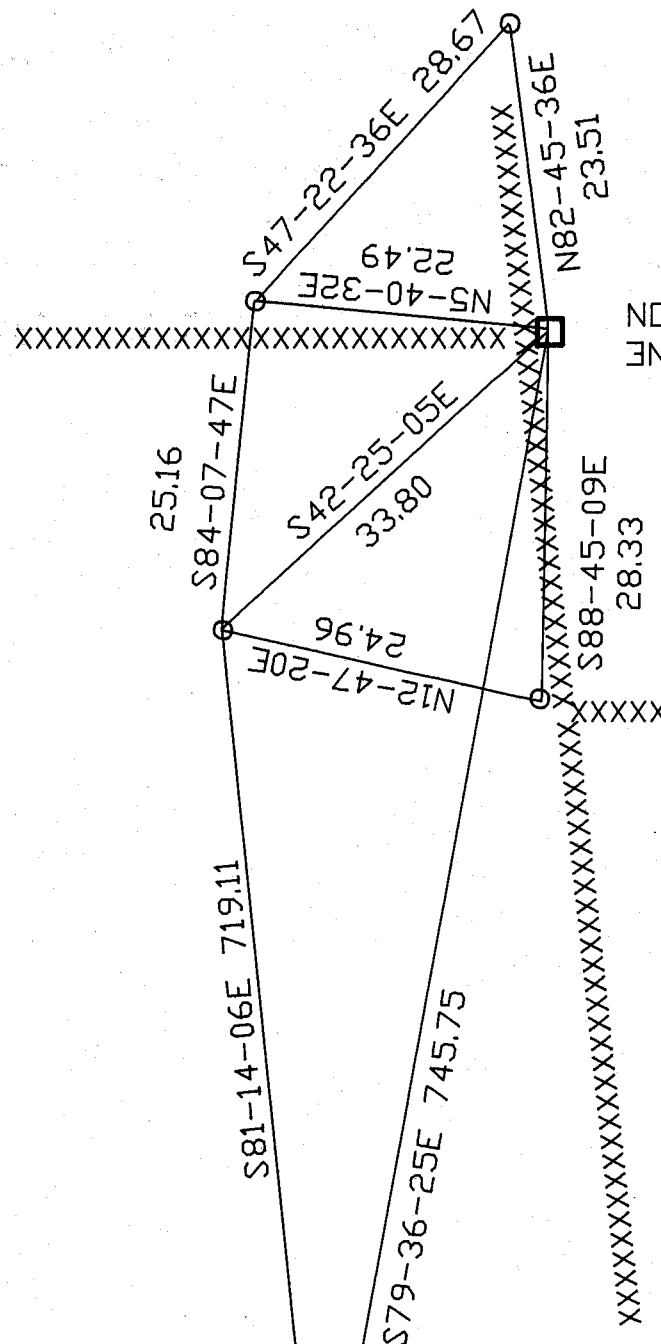
Number of included sheets 1

CORNER CODE **Z-7**

A-E 7.08 REQUIREMENT



OBSERVATION SHEETS  
#624 & 845



FD CUT LIMESTONE  
SET CARSONITE ON  
SOUTH SIDE,  
L.S. IS 1'  
SOUTH OF E/W  
FENCE

**S 1/4 CDR  
SEC 32  
NEWARK TWP  
T1N R11E**

○ 3/4X24 REROD  
/PLASTIC CAP

APPLE TREE

20' ±

POND

*Donald Bues*

6-19-01

EMBOSSSED  
SEAL

L-7