

U.S. PUBLIC LAND SURVEY MONUMENT RECORD

For Public Land Survey Corners in:

WI ADMINISTRATIVE CODE A-E 7.08 REQUIREMENT

T. / N., R. // E

CORNER CODE INDEX

A	1	2	3	4	5	6	7	8	9	10	11	12	13	14	15	16	17	18	19	20	21	22	23	24	25
B																									
C	6																								
D																									
E																									
F																									
G	7																								
H																									
I																									
J																									
K	18																								
L																									
M																									
N																									
O																									
P	19																								
Q																									
R		20																							
S																									
T																									
U	30																								
V																									
W																									
X																									
Y	31																								
Z																									

NEWARK TWP
ROCK COUNTY WI

IF AVAILABLE
ROCK COUNTY COORDINATES PREFERRED

North _____ Elev. _____

East _____

Hor. Datum _____ Vert. Datum _____

LATITUDE _____ ELLIPS. HT. _____

LONGITUDE _____

GPS (X) _____ TRAVERSE (X) _____

BASED ON THE FOLLOWING CONTROL:

PLACE MONUMENT SYMBOL AT PROPER LOCATION ON ABOVE INDEX

CORNER MONUMENT

WITNESS MONUMENT

(a)

BEARINGS ARE BASED ON:

FIELD BOOK _____ PAGE # _____

SHEET 1 OF 3

SHOW A PLAN VIEW DRAWING DEPICTING THE CORNER MONUMENT AND SURROUNDING PHYSICAL FEATURES, INCLUDING THE EXCAVATION AREA AND DEPTH.

PLANNING & ZONING COMMITTEE ADOPTED THE ABOVE FORM ON 12/2/1982

CORNER CODE 2-17

NE629

(B) Describe any record evidence, monument evidence, occupational evidence, testimonial evidence or any other material evidence you considered, and whether the monument was found or placed.

1832 LYONS PG 3 EAST ALONG THE SOUTH SIDE OF SEC 34 VAR 6-50E
2640 SET POST FOR 1/4 SECTION CORNER BLACK OAK 26 N50W 99.66';
BLACK OAK 24 N21E 31.02'

5134.8 TO A SPRING RUN 1.32' C N

5280 SET POST FOR CORNER TO SEC 34 & 35 BUR OAK 17 N53W 64.02';
BUR OAK 12 N61E 85.14' LAND ROLLING 3RD RATE AND THINLY
WOODED WITH OAK

PG 3 EAST ALONG THE SOUTH SIDE OF SEC 35 VAR 6-50E

2640 TO 1/4 SEC CORNER WHICH IS NOT ESTABLISHED ON ACCOUNT
OF HIGH WATER WHICH COVERS THE GROUND FOR
CONSIDERABLE DISTANCE. A BRISK RUNNING STREAM ABOUT
23.1' WIDE RUNS SOUTH BUT A SHORT DISTANCE WEST OF THE
1/4 SEC CORNER (ON WHERE CORNER SHOULD BE)

5280 SET POST FOR CORNER TO SECS 35 & 36 BUR OAK 14 N20E 104.94';
NO OTHER BEARING TREE

1834 MILLER PG 14 NORTH BETWEEN SECS 34 & 35

132 LEAVE UP LAND FOR LOW ??

2640 SET 1/4 SEC POST BUR OAK 15 IN S22E 91.08'; BUR OAK 6 N54
1/2W 33'

4435.2 CREEK C S.E. 33' RAPID TO??

4686 LEAVE WET GROUND

5280 SET POST COR SECS 26, 27, 34 YELLOW OAK 15 IN N76-30E 42.9';
YELLOW OAK 18 S51W 52.8' LAND LOW AND WET WITH
SCATTERING OAK

1836 SPAULDING ILL. ORIG. (COULD NOT FIND FIELD NOTES) PLAT CALLS
FOR THE NW COR SEC 6 T46N R1E TO BE 1493.58' NORTH OF SE COR SEC
24 T29N R11E, 4978.38' NORTH OF SW COR SEC 6, & 1358.94' WEST OF
THE SE COR SEC 34 T1N R11E

1840 SPAULDING ILLINOIS ORIG SURVEYOR (JAN & FEB)

PAGE 2

MEASURING CHAIN COMPARED WITH THE STANDARD CHAIN
AND FOUND TO BE OF THE RIGHT LENGTH ADJUST MY COMPASS AT 6-
53 VARIATION EAST TO AGREE WITH THE 3RD PRINCIPAL MERIDIAN
ALONG THE EAST BOUNDARY OF TOWNSHIP 28 NORTH RANGE 11 EAST
OF THE 4TH PRINCIPAL MERIDIAN.

*EAST ON A RANDOM LINE ALONG THE SOUTH BOUNDARY
OF SECTION 34 TOWNSHIP ONE NORTH RANGE 11 EAST OF THE
4TH PRINCIPAL MERIDIAN VARIATION 6-53 E FROM THE CORNER
TO SECTION 33 AND 34*

2655.84 I FELL 23.76' NORTH OF THE POST FOR QUARTER SECTION
CORNER. MY OBJECT IN RUNNING THIS LINE WAS TO
ASCERTAIN ITS LENGTH AND BEARING. FEBRUARY 22, 1840

1863 LOCKE VOL 1 PG 176 VAR 6-15 2614.92' TO W 1/4 COR SEC 35, VAR 6-15
5229.84' TO NW COR SEC 35, & VAR 6-00 ALONG SOUTH LINE OF SEC 34.
FD GOVERNMENT STAKE. USED TO SUBDIVIDE SEC 34. SET STAKE.

1871 COLLIN'S REMONUMENTATION NOTES

PG 161 WEST ON SOUTH LINE OF 34 VARIATION 5-30

2649.9 INTERSECT 1/4 LINE 5.28' SOUTH OF CORNER. SET 1/4 STONE
BY STUMP AND ROOTS OF WITNESS TREES CORRECTED
VARIATION 5-37

CONTINUED WEST VARIATION 5-30

5297.82 INTERSECT SECTION LINE 6.6' NORTH OF CORNER SET STONE
FOR CORNER OF 33,34 IN PLACE OF STAKE AND STONES
AGREEING WITH STUMPS OF WITNESS TREES.

Donald Barnes

SHEET 1 OF 3

Z-17

7-03-01

CORRECTED VARIATION 5-21

PG 148

WEST ON SOUTH LINE OF 35 VARIATION 6

.660 CREEK
726 SAME
818.4 SAME
2681.58 SET 1/4 STONE.

CONTINUED WEST SAME VARIATION

5361.18 SET STONE FOR CORNER OF 34 & 35 IN PLACE OF OLD STAKE AGREEING WITH WITNESS TREE. NOTED S53W BUT IS N53W WITH PLAIN MARK.

PG 149

NORTH BETWEEN 34 & 35 VARIATION 4-39

2601.72 SET 1/4 STONE BY STUMP OF WITNESS TREE

CONTINUED NORTH VARIATION 5-36

- 4121.7 CREEK**
5217.96 SET STONE FOR CORNER OF 26,27,34,35 BY STUMPS OF WITNESS TREES
- 1920 TISSANDIER. SET CONC. MON. WITH BRASS PLUG @ NE COR SEC 34 T29N R11E WITH IS WEST OF SE COR SEC 34. 3291.00' TO NW COR SEC 24, 4689.00 TO NE COR SEC 6, ANGLE OF 90-29-10 @ NE COR SEC 24 FROM SE COR SEC 24 TO NW COR SEC 24, ANGLE OF 89-41-46 @ NE COR SEC 24 FROM NE COR SEC 6 TO SW COR SEC 6 T46N R1E, 1495.85 TO SE COR SEC 24, ANGLE OF 90-26-10 @ SE COR SEC 35 FROM S 1/4 COR SEC 35 TO E 1/4 COR SEC 34, LAT 42-30-26; LONG 89-11-52.72 @ NE COR SEC 24.**
- 1979 BARNES VOL 5 PG 536 2680.82' TO S 1/4 COR SEC 35, ANGLE OF 89-22-41 @ SW COR SEC 35 FROM W 1/4 TO S 1/4 CORNERS SEC 35, 2606.56' TO W 1/4 COR SEC 35, ANGLE 90-26-49 @ W 1/4 COR SEC 35 FROM E 1/4 TO SW CORNERS SEC 35, FD CUT LIMESTONE**
- 1979 BARNES VOL 5 PG 538 FD CUT LIMESTONE. SKETCH SHOWS MON AT NORTHERN FENCE INT.**
- 1979 THOM #3296 2681.18' TO S 1/4 COR SEC 35, 2606.64' TO W 1/4 COR SEC 35**

FD CUT LIMESTONE WITH CARSONITE POST.

C) Was the corner restored through acceptance of (1) an obliterated evidence location, or, (2) a found perpetuated location?

ACCEPTED FOUND PERPETUATED LOCATION. COLLIN'S REMONUMENTATION FIELD NOTES STATE, "SET STONE FOR CORNER OF 34 & 35 IN PLACE OF OLD STAKE AGREEING WITH WITNESS TREE." HIS NOTES ALSO STATES, "NOTED S53W BUT IS N53W WITH PLAIN MARK." DEMONSTRATES HE FOUND AN ORIGINAL BEARING TREE. THE MARKING ON THE BEAR TREE MATCHES THE ORIGINAL FIELD NOTES. COLLIN'S REFERENCE TO S53W IS PROBABLE A TRANSCRIPTION ERROR IN THE COPIES OF THE ORIGINAL GOVERNMENT SURVEY NOTES HE HAD.

I, **Donald Barnes**, hereby certify that the corner location as identified by the corner code index was determined by me under my direction and control and that this U.S. Public Land Survey Monument Record is correct and complete to the best of my knowledge and belief.



SHEET 2 OF 3

7-03-01

CORNER CODE Z-17

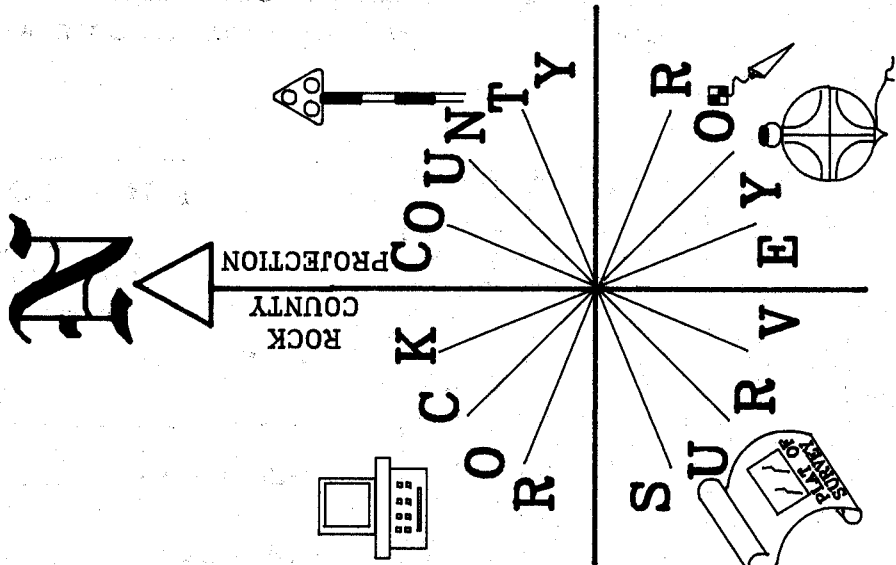
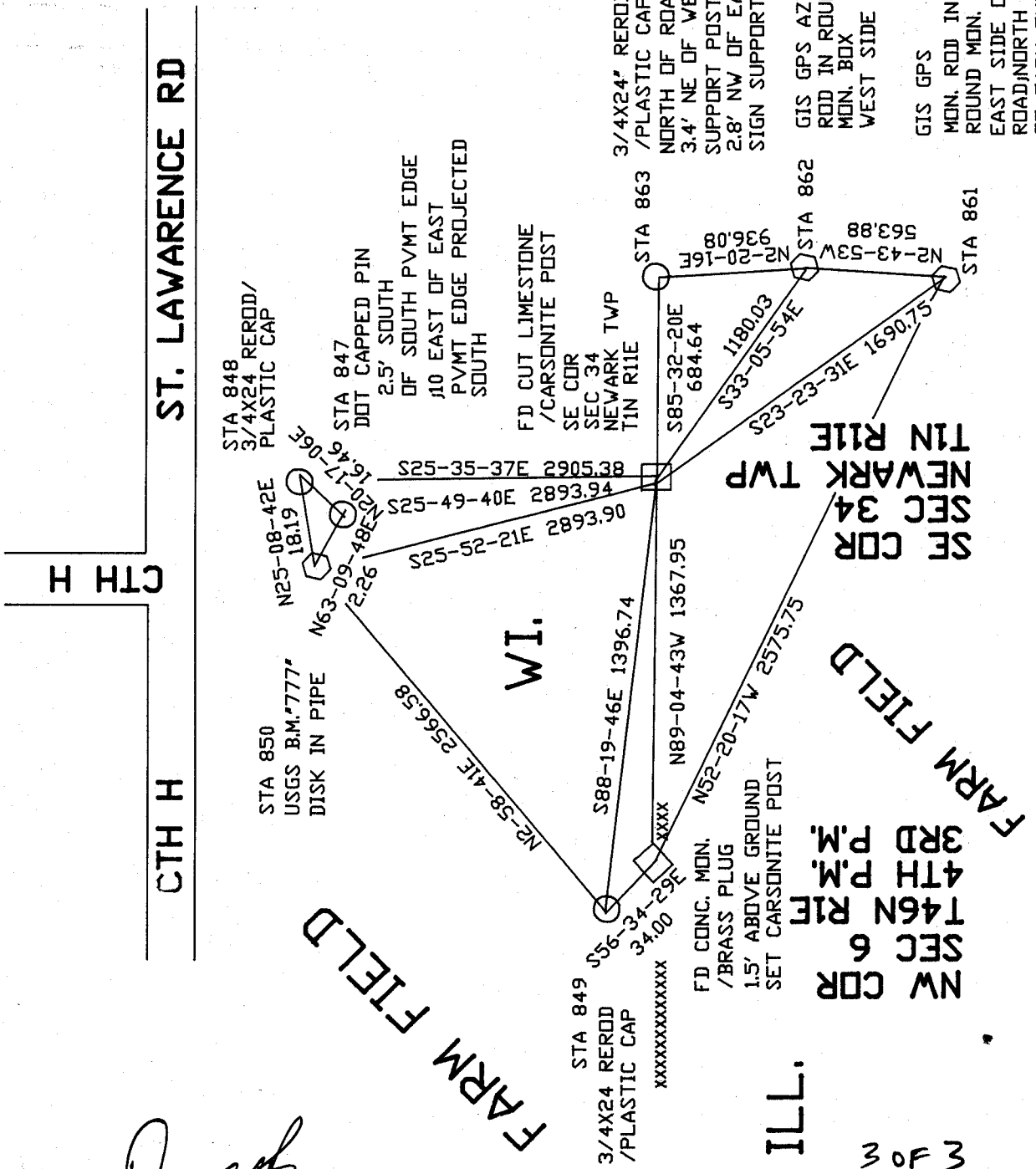
Donald Barnes
7/03/01

EMBOSSED SEAL

Z-17

3 OF 3

ILL.



NOT TO SCALE