

# U.S. PUBLIC LAND SURVEY MONUMENT RECORD

For Public Land Survey Corners in:

WI ADMINISTRATIVE CODE A-E 7.08 REQUIREMENT

T. 1N., R. 1E

### CORNER CODE INDEX

A	2	3	4	5	6	7	8	9	10	11	12	13	14	15	16	17	18	19	20	21	22	23	24	25
B	6																							
C		5																						
D			4																					
E				3																				
F					2																			
G	1																							
H		8																						
I			9																					
J				10																				
K					11																			
L	18					17																		
M							16																	
N								15																
O									14															
P										13														
Q	19										22													
R		20										21												
S			20										22											
T				20										22										
U					20										22									
V						20										22								
W							20										22							
X								20										22						
Y									20										22					
Z										20										22				

NEWARK TWP  
ROCK COUNTY WI

IF AVAILABLE  
ROCK COUNTY COORDINATES PREFERRED

North \_\_\_\_\_ Elev. \_\_\_\_\_

East \_\_\_\_\_

Hor. Datum \_\_\_\_\_ Vert. Datum \_\_\_\_\_

LATITUDE \_\_\_\_\_ ELLIPS. HT. \_\_\_\_\_

LONGITUDE \_\_\_\_\_

GPS (X) \_\_\_\_\_ TRAVERSE (X) \_\_\_\_\_

BASED ON THE FOLLOWING CONTROL:

PLACE MONUMENT SYMBOL  AT PROPER LOCATION ON ABOVE INDEX

CORNER MONUMENT

WITNESS MONUMENT

(a)

BEARINGS ARE BASED ON:

FIELD BOOK \_\_\_\_\_ PAGE # \_\_\_\_\_

SHEET 1 OF 3

SHOW A PLAN VIEW DRAWING DEPICTING THE CORNER MONUMENT AND SURROUNDING PHYSICAL FEATURES, INCLUDING THE EXCAVATION AREA AND DEPTH.

PLANNING & ZONING COMMITTEE ADOPTED THE ABOVE FORM ON 12/2/1982

CORNER CODE 2-13

NE627

(B) Describe any record evidence, monument evidence, occupational evidence, testimonial evidence or any other material evidence you considered, and whether the monument was found or placed.

- 1832 LYONS PG 2 EAST ALONG THE SOUTH SIDE OF SEC 33. VAR 6-50E
  - 2640 SET POST FOR 1/4 SECTION CORNER. BLACK OAK 6 N70E 148.5' BUR OAK 15 N82W 114.18'
  - 5280 SET A POST FOR CORNER TO SECTIONS 33 & 34 BUR OAK 12 N14E 31.02 BUR OAK 15 N34W 87.12'
- PG 3 EAST ALONG THE SOUTH SIDE OF SEC 34 VAR 6-50E
  - 2640 SET POST FOR 1/4 SECTION CORNER BLACK OAK 26 N50W 99.66'; BLACK OAK 24 N21E 31.02'
  - 5134.8 TO A SPRING RUN 1.32' CR NORTH
  - 5280 SET POST FOR CORNER TO SEC 34 & 35 BUR OAK 17 N53W 64.02'; BUR OAK 12 N61E 85.14' LAND ROLLING 3RD RATE AND THINLY WOODED WITH OAK
- 1834 MILLER PG 19 NORTH BETWEEN SECS 33 & 34
  - 2415.6 BUR OAK 12 IN DIA
  - 2640 SET 1/4 SEC POST BUR OAK 18 S67E 16.5'; BUR OAK 12 N58W 132.66'
  - 2838 ENTER MARSHY GROUND
  - 3162.72 BROOK NE 1.32'
  - 5280 SET POST COR SEC 33,34,27,28 IN MOUND OF EARTH AND SOD. MARCH 9, 1834
- 1840 ORIG GOV PLAT OF ILL. SHOWS SW COR SEC 33 653.4' WEST OF NW COR SEC 23 T29N R11E.
- 1840 SPAULDING ILLINOIS ORIG SURVEYOR (JAN & FEB)

PAGE 2

MEASURING CHAIN COMPARED WITH THE STANDARD CHAIN AND FOUND TO BE OF THE RIGHT LENGTH ADJUST MY COMPASS AT 6-53 VARIATION EAST TO AGREE WITH THE 3RD PRINCIPAL MERIDIAN ALONG THE EAST BOUNDARY OF TOWNSHIP 28 NORTH RANGE 11 EAST OF THE 4TH PRINCIPAL MERIDIAN.

FIELD BOOK PG 174 & 175

NORTH BETWEEN SECTIONS 23 & 24 TOWNSHIP 29 NORTH RANGE 11 EAST OF THE 4TH PRINCIPAL MERIDIAN VARIATION 6-53 EAST

- 991.32 A BUR OAK 14 INCHES IN DIAMETER
- 1531.2 INTERSECT THE BASE LINE OF WISCONSIN TERRITORY AND NORTH BOUNDARY OF THE STATE OF ILLINOIS 653.4' EAST OF THE CORNER TO SECTIONS 33 & 34 IN TOWNSHIP ONE NORTH RANGE 11 EAST OF THE 4TH PRINCIPAL MERIDIAN AND AT SAID INTERSECTION SET A POST FOR CORNER SECTIONS 23 & 24 TOWNSHIP 29 NORTH RANGE 11 EAST

PAGE 175

OF THE 4TH PRINCIPAL MERIDIAN FROM WHICH POST A BURR OAK 10 INCHES IN DIAMETER BEARS S59W 35.64' AND A BUR OAK 20 INCHES IN DIAMETER BEARS S56-45E 38.94' DISTANT. LAND HIGH AND ROLLING BLACK AND BURR OAK SECOND RATE SOIL NOT FOR CULTIVATION.

EAST ON A RANDOM LINE ALONG THE SOUTH BOUNDARY OF SECTION 34 TOWNSHIP ONE NORTH RANGE 11 EAST OF THE 4TH PRINCIPAL MERIDIAN VARIATION 6-53 E FROM THE CORNER TO SECTION 33 AND 34

- 2655.84 I FELL 23.76' NORTH OF THE POST FOR QUARTER SECTION CORNER. MY OBJECT IN RUNNING THIS LINE WAS TO ASCERTAIN ITS LENGTH AND BEARING. FEBRUARY 22, 1840

- 1863 LOCKE VOL 1 PG 176 VAR 6-00 ALONG SW & SE 1/4 LINE SEC 34, VAR 5-45 2663.76' TO W 1/4 COR SEC 34. FOUND GOV. STAKE. W 1/4 COR SEC 34 ON LINE & MIDWAY BETWEEN NW & SW CORNERS OF SEC 34. S 1/4 COR SEC 34 ON LINE & MIDWAY BETWEEN SW & SE CORNERS OF SEC 34.

SHEET 1 OF 3

*Dwight Barnes*  
6-18-01

2-13

1865 LOCKE VOL 1 PG 227 & 3274 VAR 5-56 2650.56' TO S ¼ COR SEC 33,  
VAR 5-45 2647.92' TO W 1/4 COR SEC 34. STATES NOTHING ABOUT MON.

1871 COLLINS REMONUMENTATION NOTES

PG 174 WEST ON SOUTH LINE OF 33 VARIATION 5-30

2651.88 INTERSECT 1/4 LINE 5.28' SOUTH OF CORNER SET 1/4 STONE BY  
WITNESS TREE CORRECTED 5-37

CONTINUED WEST VARIATION 6

5297.16 INTERSECT SECTION LINE 4.62' SOUTH OF CORNER SET STONE FOR  
CORNER OF 32 & 33 BY STUMPS OF WITNESS TREES CORRECTED  
VARIATION 6-06

PG 162 NORTH BETWEEN 33 & 34 VARIATION 5

2655.84 INTERSECT 1/4 LINE 17.82' EAST OF CORNER SET 1/4 STONE  
IN PLACE OF STAKE AND STONE AGREEING WITH STUMPS OF  
WITNESS TREES. CORRECTED VARIATION 4-36.

CONTINUED NORTH VARIATION 5

5315.64 SET STONE FOR CORNER OF 27,28,33,34 IN OLD MOUND.

PG 161 WEST ON SOUTH LINE OF 34 VARIATION 5-30

2649.9 INTERSECT 1/4 LINE 5.28' SOUTH OF CORNER. SET 1/4 STONE BY  
STUMP AND ROOTS OF WITNESS TREES. CORRECTED VARIATION 5-37

CONTINUED WEST VARIATION 5-30

5297.82 INTERSECT SECTION LINE 6.6' NORTH OF CORNER. SET STONE FOR  
CORNER OF 33, 34 IN PLACE OF STAKE AND STONES AGREEING WITH  
STUMPS OF WITNESS TREES. CORRECTED VARIATION 5-21

1920? TISSANDIER SET CONC. MON. WITH BRASS PLUG AT NW COR SEC 24. 3291.00'  
TO NE COR SEC 24, 5265.80' TO NW COR SEC 23, & ANGLE OF 179-58-18 @ NW  
COR SEC 24 FROM NE COR SEC 24 TO NW COR SEC 24.

1998 HOULE CSM 21 PG 260 2655.06' TO W 1/4 COR SEC 34

FD CUT LIMESTONE AT GRADE. PLACED CARSONITE POST NEXT TO STONE. ALSO  
FOUND TISSANDIER'S MONUMENT AS SHOWN.

C) Was the corner restored through acceptance of (1) an obliterated evidence location, or, (2) a found  
perpetuated location?

ACCEPTED FOUND BUT LIMESTONE.

D) Describe any material discrepancy between the location of the corner as restored or reestablished and the  
location of that corner as previously restored or reestablished by distance and direction. Show the discrepancy  
on the plan view drawing under (a), above. Show the distances between the corner as previously restored or  
reestablished and (1) the corner as restored or reestablished, and (2) to at least 4 of the witness monuments  
shown on the drawing in (a), above.

FOUND PIN AS SHOWN IN DRAWING.

(E) Was the corner reestablished through lost corner proportionate methods? If so, show the method, including  
the directions and distances to other public land survey corners used as evidence or used for proportioning the  
corner location.

I, Donald Barnes, hereby certify that the corner location as identified by the corner code index was  
determined by me under my direction and control and that this U.S. Public Land Survey Monument Record  
is correct and complete to the best of my knowledge and belief.

seal

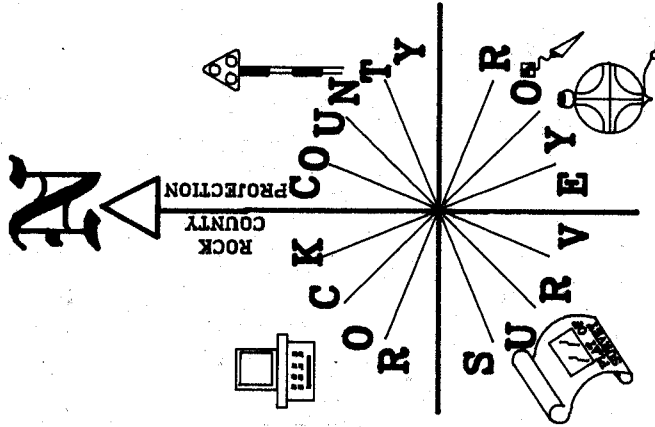
emboss

SHEET 2 OF 3

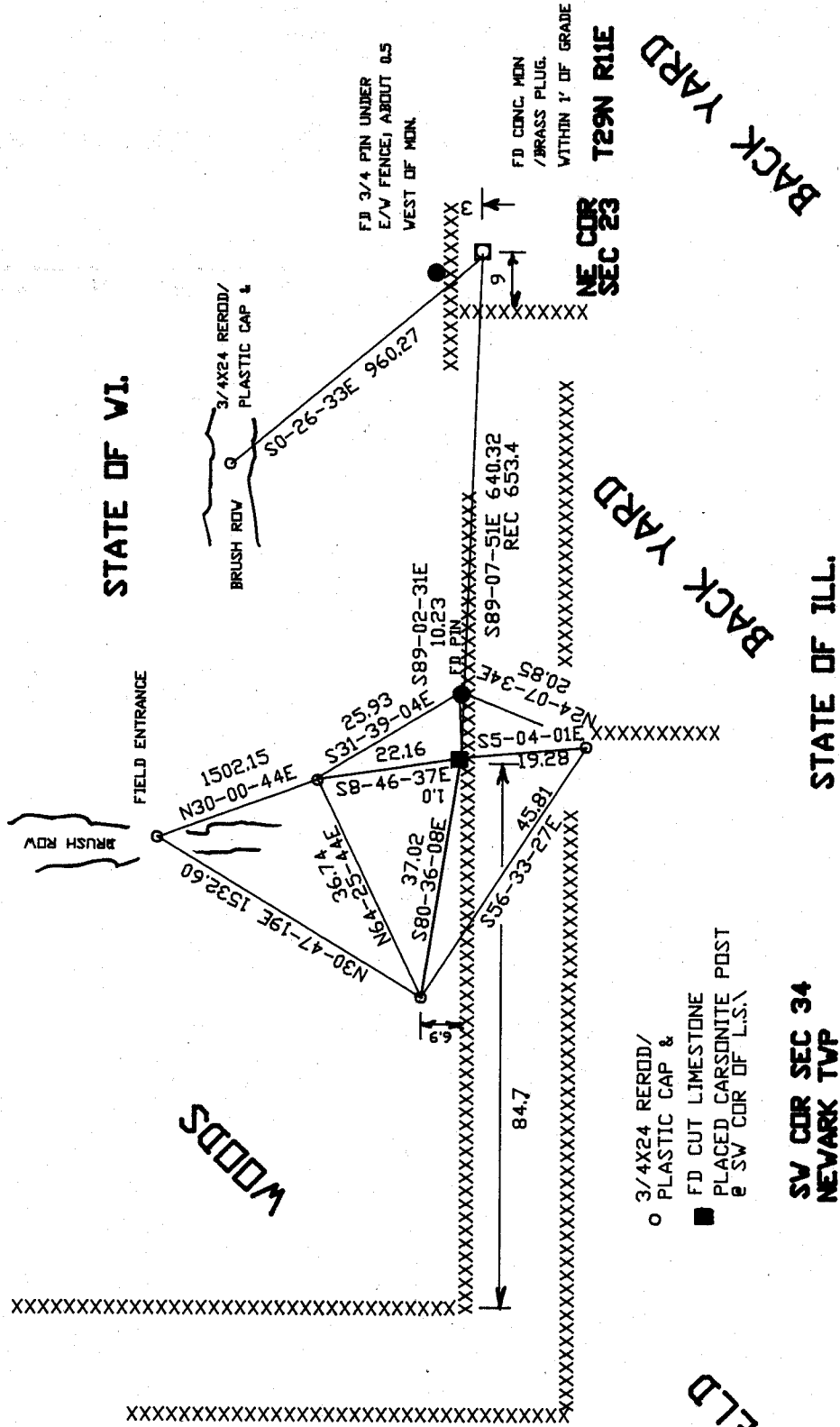
CORNER CODE Z-13

A-E 7.08 REQUIREMENT

Donald Barnes  
6-18-01



OBSERVATION SHEETS #854, #853, & #852



STATE OF WI.

STATE OF ILL.

WOODS

FIELD

- 3/4X24 REROD/  
PLASTIC CAP &
- FD CUT LIMESTONE  
PLACED CARSONITE POST  
e SW COR OF L.S.

SV COR SEC 34  
NEVARK TWP

EMBOSSED  
SEAL

6-18-01

Donald Barnes

30F3

Z-13