

U.S. PUBLIC LAND SURVEY MONUMENT RECORD

For Public Land Survey Corners in:

WI ADMINISTRATIVE CODE A-E 7.08 REQUIREMENT

T. 1N., R. 11E

CORNER CODE INDEX

A	1	2	3	4	5	6	7	8	9	10	11	12	13	14	15	16	17	18	19	20	21	22	23	24	25
B																									
C	6					5					4				3					2				1	
D																									
E																									
F																									
G	1					8									10					11				12	
H																									
J																									
K																									
L	18														15					14				13	
M																									
N																									
O																									
P	19														22					23				24	
Q																									
R																									
S																									
T	30														27					26				25	
U																									
V																									
W																									
X	31														34					35				36	
Y																									
Z																									

NEWARK TWP

ROCK COUNTY WI

IF AVAILABLE
ROCK COUNTY COORDINATES PREFERRED

North _____ Elev. _____

East _____

Hor. Datum _____ Vert. Datum _____

LATITUDE _____ ELLIPS. HT. _____

LONGITUDE _____

GPS (X) _____ TRAVERSE (X) _____

BASED ON THE FOLLOWING CONTROL:

PLACE MONUMENT SYMBOL AT PROPER LOCATION ON ABOVE INDEX

CORNER MONUMENT WITNESS MONUMENT

(a)

BEARINGS ARE BASED ON:

FIELD BOOK _____ PAGE # _____

SHEET 1 OF 2

SHOW A PLAN VIEW DRAWING DEPICTING THE CORNER MONUMENT AND SURROUNDING PHYSICAL FEATURES, INCLUDING THE EXCAVATION AREA AND DEPTH.

PLANNING & ZONING COMMITTEE ADOPTED THE ABOVE FORM ON 12/2/1982

CORNER CODE V-7

NE604

(B) Describe any record evidence, monument evidence, occupational evidence, testimonial evidence or any other material evidence you considered, and whether the monument was found or placed.

- 1834 MILLER PG 31 EAST RANDOM BETWEEN SECS 29 & 32
5299.8 INTERSECT SEC LINE 5.94' NORTH POST LAND LEVEL 2ND RATE
OAK & HICKORY TIMBER OAK & HAZEL U.G. {UNDER GROWTH}
WEST CORRECTED BETWEEN SECS 29 & 32
- 531.3 BUR OAK 20
2649.9 1/4 SEC POST BUR OAK 12 S10W 8.58'; BUR OAK 16 N43W 46.86'
3464.34 WHITE OAK 22 IN DIA
5045.7 BUR OAK 12 IN DIA
5299.8 SEC CORNER
- 1871 COLLIN'S REMONUMENTATION NOTES
PG 187 EAST BETWEEN 29 & 32 VARIATION 7-30
2686.2 INTERSECT 1/4 LINE 3.3' NORTH OF CORNER SET 1/4 STONE BY
STUMPS OF WITNESS TREES CORRECTED VARIATION 7-34
CONTINUED EAST VARIATION 7-30
- 5350.62 SECTION CORNER
- 1959 SHIMEALL #3230 2660.38 TO NW COR SEC 32
1962 BATTERMAN VOL 4 PG 65 FD CUT STONE MON. @ CENTER OF PVMT &
REFERENCED SAME
1962 BATTERMAN VOL 4 PG 210 SAME TIES AS VOL 4 PG 65
1973 LEE CSM 3 PG 251 2684.28 TO NE COR SEC 32
1980 TOWNSEND CSM 10 PG 63 2683.95 TO NE COR SEC 32
1984 LEE CSM 11 PG 437 2705.5 TO CENTER SEC 32
1989 LEE #12372 1342.12 FROM NE COR SEC 32 WEST TO 1/16TH COR
1991 LEE CSM 15 PG 39 1352.75 SOUTH TO 1/16 TH COR

FD 1" PIPE IN EAST BOUND LANE & REFERENCE TIES IN VOL 4 PG 210. COR. IS NOT IN CENTER OF PVMT AS CALLED FOR IN VOL 4 PG 210. PIPE IS 5.1' SOUTH OF CENTER OF PVMT.

C) Was the corner restored through acceptance of (1) an obliterated evidence location, or, (2) a found perpetuated location?

ACCEPTED FD PERPETUATED LOCATION.

D) Describe any material discrepancy between the location of the corner as restored or reestablished and the location of that corner as previously restored or reestablished by distance and direction. Show the discrepancy on the plan view drawing under (a), above. Show the distances between the corner as previously restored or reestablished and (1) the corner as restored or reestablished, and (2) to at least 4 of the witness monuments shown on the drawing in (a), above.

(E) Was the corner reestablished through lost corner proportionate methods? If so, show the method, including the directions and distances to other public land survey corners used as evidence or used for proportioning the corner location.

I, Donald Barnes, hereby certify that the corner location as identified by the corner code index was determined by me under my direction and control and that this U.S. Public Land Survey Monument Record is correct and complete to the best of my knowledge and belief.

seal
Donald Barnes

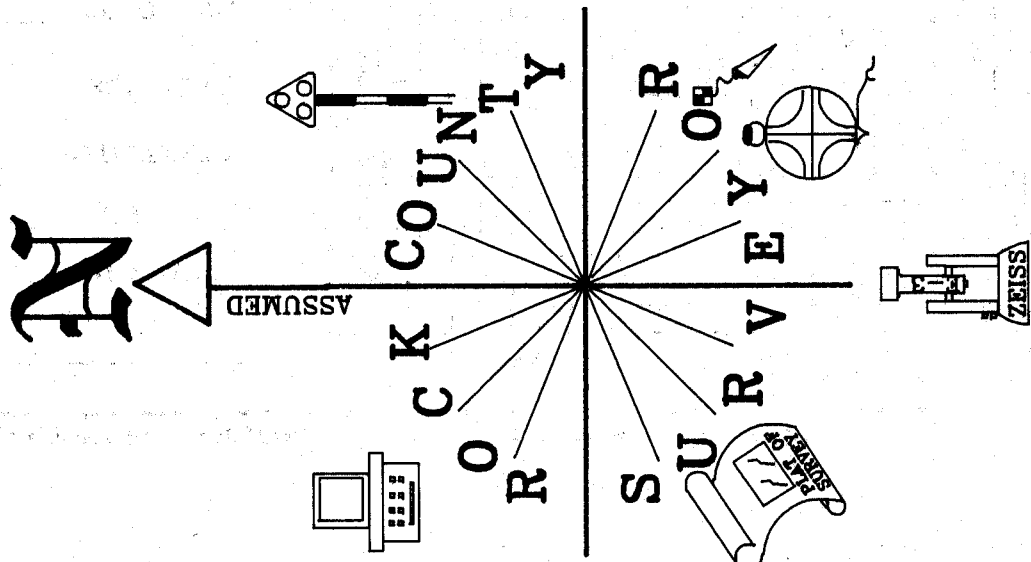
emboss

7-20-01

sheet 1 of 2

CORNER CODE V-7

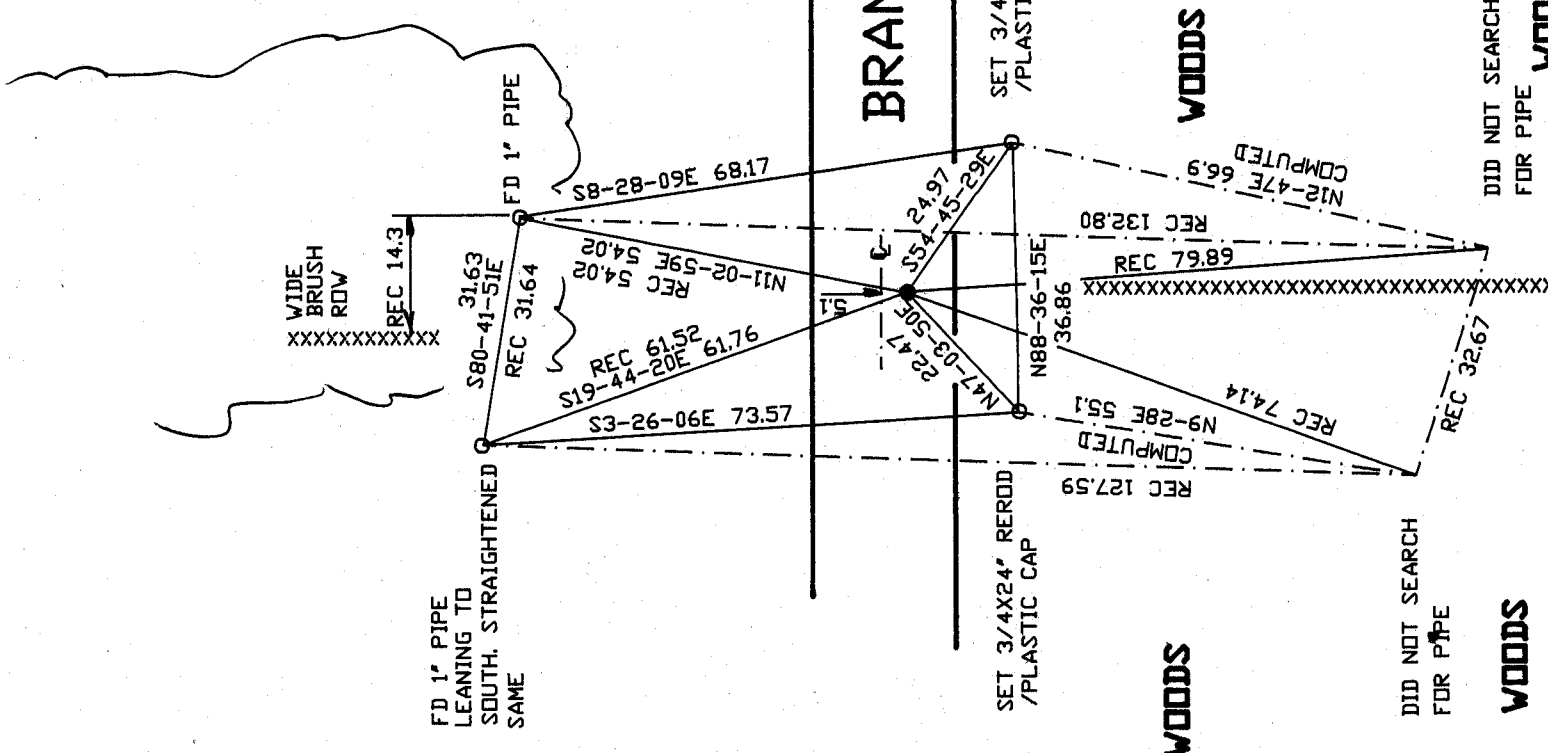
A-E 7.08 REQUIREMENT



NOT TO SCALE
OBSERVATION SHEET #604

BRANDHERM RD

● FD 1" PIPE
0.2' DEEP
S 1/4 COR
SEC 29
NEWARK TWP
TIN RIE



David Hanes

EMBOSSSED SEAL

7-20-01