

U.S. PUBLIC LAND SURVEY MONUMENT RECORD

For Public Land Survey Corners in:

WI ADMINISTRATIVE CODE A-E 7.08 REQUIREMENT

T. 1 N., R. 11 E

CORNER CODE INDEX

NEWARK TWP

ROCK COUNTY WI

IF AVAILABLE
ROCK COUNTY COORDINATES PREFERRED

A	1	2	3	4	5	6	7	8	9	10	11	12	13	14	15	16	17	18	19	20	21	22	23	24	25
B	6																								
C		5																							
D			4																						
E				3																					
F					2																				
G						1																			
H	7																								
I		8																							
J			9																						
K				10																					
L					11																				
M	18																								
N		17																							
O			16																						
P				15																					
Q					14																				
R						13																			
S							12																		
T								11																	
U									10																
V										9															
W											8														
X												7													
Y													6												
Z														5											

North _____ Elev. _____

East _____

Hor. Datum _____ Vert. Datum _____

LATITUDE _____ ELLIPS. HT. _____

LONGITUDE _____

GPS (X) _____ TRAVERSE (X) _____

BASED ON THE FOLLOWING CONTROL:

PLACE MONUMENT SYMBOL AT PROPER LOCATION ON ABOVE INDEX

CORNER MONUMENT

WITNESS MONUMENT

(a)

BEARINGS ARE BASED ON:

OBSERVATION SHEET 4P 26

FIELD BOOK _____ PAGE # _____

SHEET 1 OF 2

SHOW A PLAN VIEW DRAWING DEPICTING THE CORNER MONUMENT AND SURROUNDING PHYSICAL FEATURES, INCLUDING THE EXCAVATION AREA AND DEPTH.

PLANNING & ZONING COMMITTEE ADOPTED THE ABOVE FORM ON 12/2/1982

CORNER CODE T-12

NE598

(B) Describe any record evidence, monument evidence, occupational evidence, testimonial evidence or any other material evidence you considered, and whether the monument was found or placed.

1834 MILLER NORTH BETWEEN 26 & 27
330 LEAVE POINT TIMBER FOR LOW GROUND
2640 SET 1/4 SEC POST YELLOW 6 S40-30W 405.24'; BUR OAK 10 S2E 212.5'
3234 LEAVE LOW GROUND
3613.5 BUR OAK 18
4276.8 BUR OAK 18
*5280 SET POST CORNER OF SECS 22,23,26,27 LAND SAME AS LAST NOTHING. *BEARINGS BUR OAK 18 N71E 54.78'; YELLOW OAK 10 S33W 29.7'

1871 COLLIN'S REMONUMENTATION NOTES NORTH BETWEEN 26 & 27 VARIATION 5-30
2636.7 SET 1/4 STONE BY STUMP OF WITNESS TREE.
CONTINUED NORTH VARIATION 7-15
5273.4 SET STONE FOR CORNER OF 22, 23, 26, 27 BY STUMP OF WITNESS TREE.

1930 BATTERMAN VOL 3 PG 175 FD WHERE OLD STONE WAS SET G.P OVER WOOD STAKE. REFERENCED SAME.

1979 BARNES VOL 5-PG 537 ANGLES @ E 1/4 COR SEC 27:
92-30-59 FROM SE COR SEC 27 TO CENTER OF SEC 27
87-17-38 FROM CENTER OF SEC 27 TO NE COR SEC 27
180-11-23 FROM NE TO SE CORNERS OF SEC 27
2652.92 TO CENTER OF SEC 27,
5283.09 TO W 1/4 COR SEC 27,
2636.85 TO SE COR SEC 27, &
2632.47 TO NE COR SEC 27

1979 BARNES VOL 5 PG 550 FD PARTS OF CUT LIMESTONE 2.5' DEEP. SET ALUM. MON. 5' WEST OF CENTER OF PVMT. PK TIES- 15.0 TO NE & 15.0 TO SE

1980 LEUENBERGER #3225 1321.28 EAST FROM CENTER OF SEC 27 TO 1/16TH COR.

1982 LEUENBERGER CSM 11 PG 71 2632.48 TO NW COR SEC 26

USED 1979 OBSERVATIONS.

C) Was the corner restored through acceptance of (1) an obliterated evidence location, or, (2) a found perpetuated location?

ACCEPTED PERPETUATED LOCATION.

D) Describe any material discrepancy between the location of the corner as restored or reestablished and the location of that corner as previously restored or reestablished by distance and direction. Show the discrepancy on the plan view drawing under (a), above. Show the distances between the corner as previously restored or reestablished and (1) the corner as restored or reestablished, and (2) to at least 4 of the witness monuments shown on the drawing in (a), above.

I, Donald Barnes, hereby certify that the corner location as identified by the corner code index was determined by me under my direction and control and that this U.S. Public Land Survey Monument Record is correct and complete to the best of my knowledge and belief.

seal


sheet 1 of 2

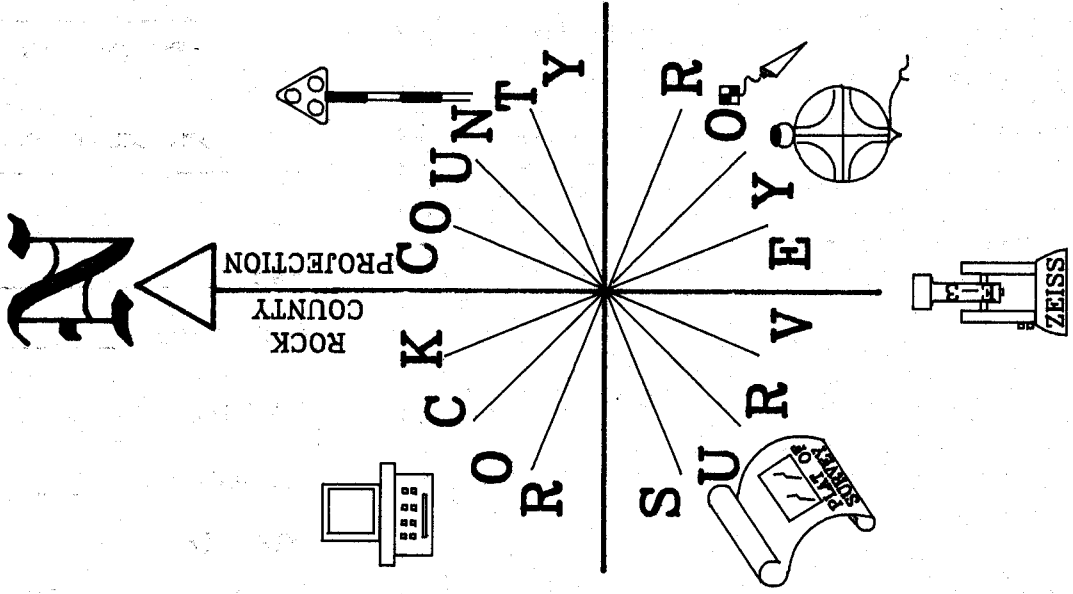
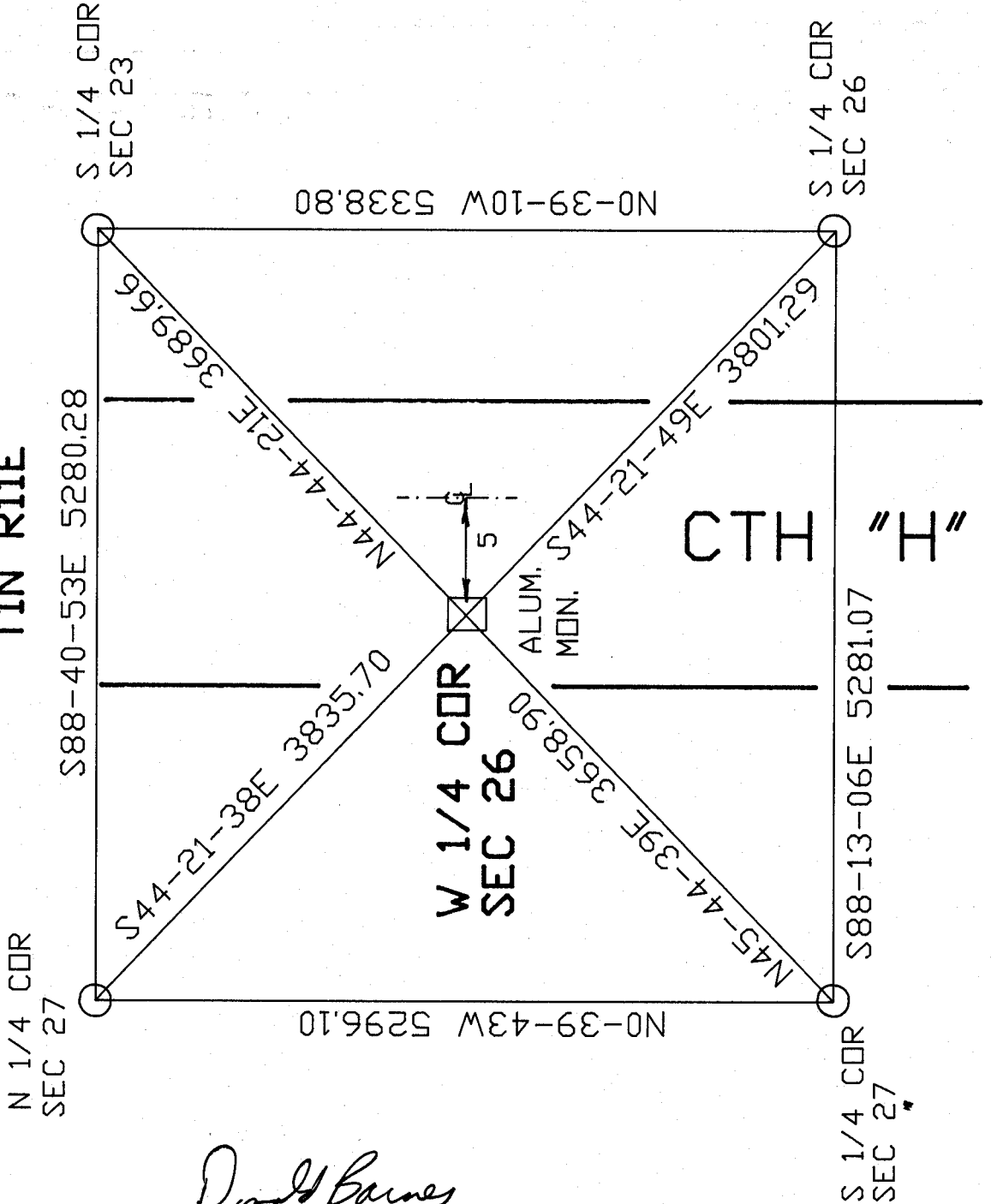
emboss

7-05-01

CORNER CODE T-17

NEWARK TWP

T1N R11E



NOT TO SCALE
OBSERVATION SHEET STA #4

Donald Barnes

7-05-01

EMBOSSSED
SEAL

PAGE 2 OF 2

T-17