

U.S. PUBLIC LAND SURVEY MONUMENT RECORD

For Public Land Survey Corners in:

WI ADMINISTRATIVE CODE A-E 7.08 REQUIREMENT

T. 1N., R. NE

CORNER CODE INDEX

A	1	2	3	4	5	6	7	8	9	10	11	12	13	14	15	16	17	18	19	20	21	22	23	24	25
B	6																								
C		5																							
D			4																						
E				3																					
F					2																				
G						1																			
H	1	8	9	10	11	12																			
I																									
J																									
K																									
L	18	17	16	15	14	13																			
M																									
N																									
O																									
P	19	20	21	22	23	24																			
Q																									
R																									
S																									
T	30	29	28	27	26	25																			
U																									
V																									
W																									
X	31	32	33	34	35	36																			
Y																									
Z																									

NEWARK TWP
ROCK COUNTY WI

IF AVAILABLE
ROCK COUNTY COORDINATES PREFERRED

North _____ Elev. _____

East _____

Hor. Datum _____ Vert. Datum _____

LATITUDE _____ ELLIPS. HT. _____

LONGITUDE _____

GPS (X) _____ TRAVERSE (X) _____

BASED ON THE FOLLOWING CONTROL:

PLACE MONUMENT SYMBOL AT PROPER LOCATION ON ABOVE INDEX

CORNER MONUMENT

WITNESS MONUMENT

(a)

BEARINGS ARE BASED ON:

FIELD BOOK _____ PAGE # _____

SHEET 1 OF 2

SHOW A PLAN VIEW DRAWING DEPICTING THE CORNER MONUMENT AND SURROUNDING PHYSICAL FEATURES, INCLUDING THE EXCAVATION AREA AND DEPTH.

PLANNING & ZONING COMMITTEE ADOPTED THE ABOVE FORM ON 12/2/1982

CORNER CODE T-13

NE597

(B) Describe any record evidence, monument evidence, occupational evidence, testimonial evidence or any other material evidence you considered, and whether the monument was found or placed.

1834 MILLER PG 20 NORTH BETWEEN SECS 27 & 28

- 792' ENTER RIDGE OF TIMBER
- 963.6 BUR OAK 18 IN
- 2030.16 BUR OAK 14 IN
- 2310 RAN IN MARSHY GROUND
- 2640 SET 1/4 SEC POST BUR OAK 12 S30E 183.48'; YELLOW OAK 6 N35W 18.48'
- 3078.9 BUR OAK 18
- 3762 CREEK BOTTOM MARSHY
- 3960 CREEK SE
- 4488 LEAVE CREEK BOTTOM
- 4537.5 YELLOW OAK 20
- 5280 SET POST CORNER OF SECS 22,23,27,28 YELLOW OAK 20 N65W 40.92', BUR OAK 14 S82E 91.08'

1871 COLLIN'S REMONUMENTATION NOTES.

PG 164

NORTH BETWEEN 27 & 28 VAR 7-30

2653.2 INTERSECT 1/4 LINE 11.88' WEST OF CORNER SET 1/4 STONE BY WITNESS TREE WITH COURSE REVERSED. CORRECTED VARIATION 7-46

CONTINUED NORTH VARIATION 7-30

5320.26 INTERSECT SECTION LINE 40.26' WEST OF CORNER UNDER STRAW STACK. SET WITNESS STAKES 33' NORTH AND 33 WEST. I'LL SET STONE BY WHEN STRAW IS REMOVED. CORRECTED VARIATION 8-22 OCT 23 1871

1871 COLLINS 2646.6' TO CENTER OF SEC 27 & 5293.2 TO E 1/4 COR SEC 27.

1979 BARNES VOL 5 PG 537 FD CUT LIMESTONE @ FENCE INT. 2630.17 TO N/S 1/4 LINE DEC 27 AND 5283.09 TO E 1/4 COR SEC 27 ANGLE OF 92-30-59 @ E 1/4 COR SEC 27 FROM SE TO W 1/4 COR SEC 27.

1994 COMBS CSM 18 PG 331 2681.60 TO NE COR SEC 28 {ERRONEOUS COR} & ANGLE OF 177-45-05 @ NW COR SEC 27 {ERRONEOUS COR} FROM E 1/4 COR SEC 21 TO E 1/4 COR SEC 27. {MY ANGLE USING THE ERRONEOUS COR IS 177-44-50 AND THE DISTANCE TO THE ERRONEOUS COR IS 2682.02.}

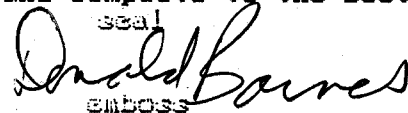
USED OBSERVATIONS FROM 1979.

C) Was the corner restored through acceptance of (1) an obliterated evidence location, or, (2) a found perpetuated location?

ACCEPTED FOUND PERPETUATED LOCATION.

D) Describe any material discrepancy between the location of the corner as restored or reestablished and the location of that corner as previously restored or reestablished by distance and direction. Show the discrepancy on the plan view drawing under (a), above. Show the distances between the corner as previously restored or reestablished and (1) the corner as restored or reestablished, and (2) to at least 4 of the witness monuments shown on the drawing in (a), above.

I, Donald Barnes, hereby certify that the corner location as identified by the corner code index was determined by me under my direction and control and that this U.S. Public Land Survey Monument Record is correct and complete to the best of my knowledge and belief.

seal

emboss

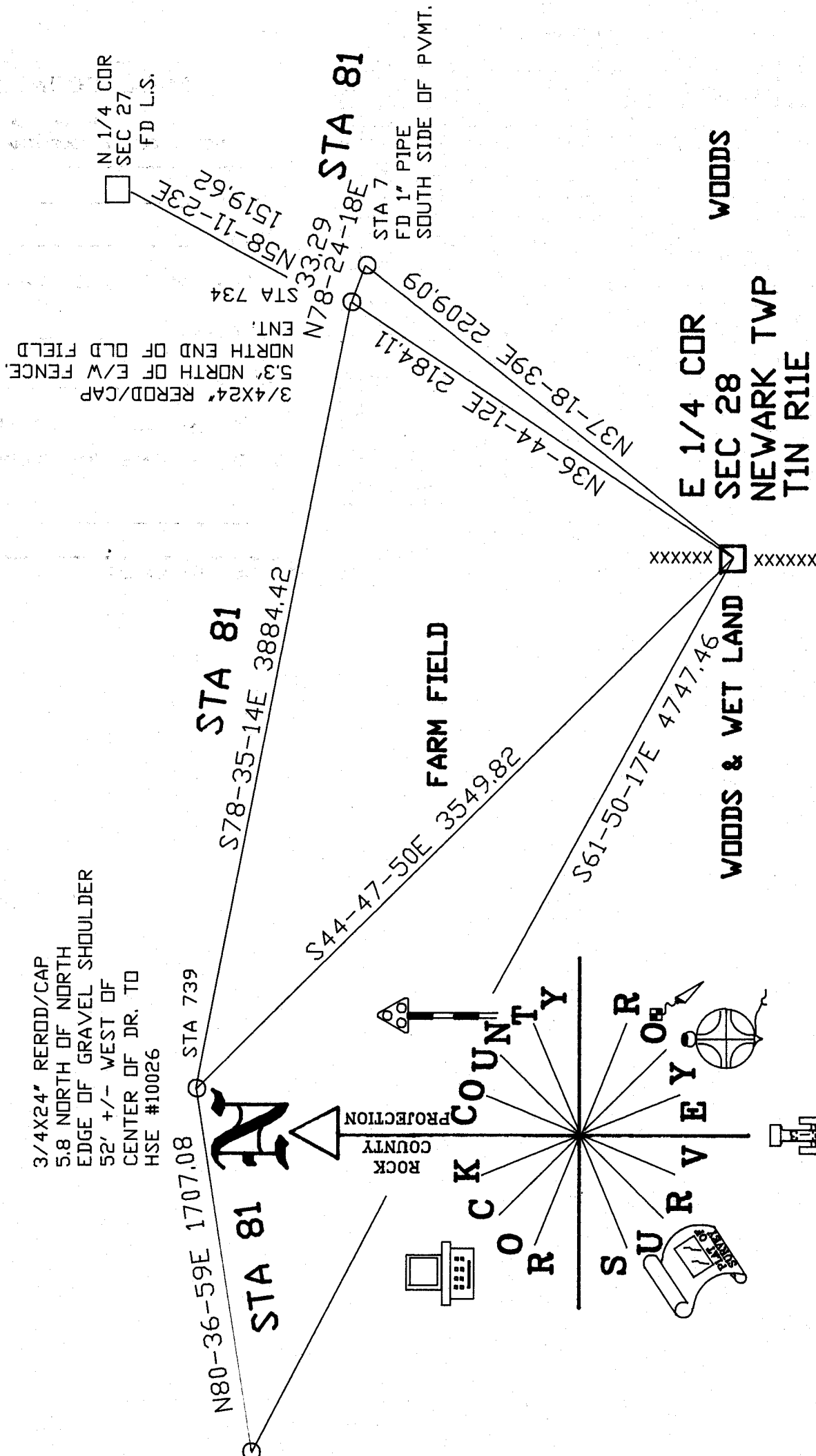
sheet 1 of 2

7-05-01

A-E 7.08 REQUIREMENT

CORNER CODE

T-13



EMBOSSED SEAL
Donald Barnes

7-05-07

T-13

NOT TO SCALE