

# U.S. PUBLIC LAND SURVEY MONUMENT RECORD

For Public Land Survey Corners in:

WI ADMINISTRATIVE CODE A-E 7.08 REQUIREMENT

T. 1 N., R. 11 E

### CORNER CODE INDEX

A	2	3	4	5	6	7	8	9	10	11	12	13	14	15	16	17	18	19	20	21	22	23	24	25
B																								
C	6																							
D		5																						
E			4																					
F				3																				
G	1																							
H		8																						
I			9																					
J				10																				
K					11																			
L	18					17																		
M							16																	
N								15																
O									14															
P										13														
Q	19										22													
R		20										21												
S			23										24											
T				24										23										
U					29										28									
V						28										27								
W							27										26							
X								26										25						
Y									25															
Z										24														

NEWARK TWP  
ROCK COUNTY WI

IF AVAILABLE  
ROCK COUNTY COORDINATES PREFERRED

North \_\_\_\_\_ Elev. \_\_\_\_\_

East \_\_\_\_\_

Hor. Datum \_\_\_\_\_ Vert. Datum \_\_\_\_\_

LATITUDE \_\_\_\_\_ ELLIPS. HT. \_\_\_\_\_

LONGITUDE \_\_\_\_\_

GPS (X) \_\_\_\_\_ TRAVERSE (X) \_\_\_\_\_

BASED ON THE FOLLOWING CONTROL:

PLACE MONUMENT SYMBOL  AT PROPER LOCATION ON ABOVE INDEX

CORNER MONUMENT

WITNESS MONUMENT

(a)

BEARINGS ARE BASED ON:

OBSERVATION SHEET 866

FIELD BOOK \_\_\_\_\_ PAGE # \_\_\_\_\_

SHEET 1 OF 3

SHOW A PLAN VIEW DRAWING DEPICTING THE CORNER MONUMENT AND SURROUNDING PHYSICAL FEATURES, INCLUDING THE EXCAVATION AREA AND DEPTH.

PLANNING & ZONING COMMITTEE ADOPTED THE ABOVE FORM ON 12/2/1982

CORNER CODE T-1

NE594

(B) Describe any record evidence, monument evidence, occupational evidence, testimonial evidence or any other material evidence you considered, and whether the monument was found or placed.

1833 MULLETT (SEPT)

PG 4

NORTH ON EAST SIDE SECTION 25

792 LEAVE MARSH

2640 SET QUARTER SECTION POST BLACK OAK 12 S21W 81.84'; BLACK OAK 20 N40W 94.38'

5280 SET POST CORNER SECTIONS 24 & 25 BUR OAK 10 N7W 33.66'; BUR OAK 8 S12W 91.08. LAND SAME AS LAST MILE

1871 COLLIN'S REMONUMENTATION NOTES

PG 201

NORTH ON WEST LINE OF 30 VARIATION 6

2678.94 SET 1/4 STONE BY STUMPS OF WITNESS TREES CONTINUED NORTH SAME VARIATION

5347.98 SET STONE FOR CORNER OF 19 & 30 IN PLACE OF STONE SET BY RUGER. AGREEING WITH STUMPS OF WITNESS TREE.

1854 McVEAN VOL 1 PG 27. STATES NOTHING ABOUT E 1/4 COR SEC 25 AVON TWP VAR 6 5316.96' TO W 1/4 COR SEC 25.

1993 KREBS CSM 16 PG 234 2669.06 TO NW COR SEC 30 & AN ANGLE OF 88-58-41 @ NW COR SEC 30 FROM NORTH LINE TO WEST LINE OF SEC 30

FD CUT L.S. PLACED CARSONITE NEXT TO L.S. L.S. IS AT SW COR. OF FENCE INT.

C) Was the corner restored through acceptance of (1) an obliterated evidence location, or, (2) a found perpetuated location?

ACCEPTED FD CUT LIMESTONE.

D) Describe any material discrepancy between the location of the corner as restored or reestablished and the location of that corner as previously restored or reestablished by distance and direction. Show the discrepancy on the plan view drawing under (a), above. Show the distances between the corner as previously restored or reestablished and (1) the corner as restored or reestablished, and (2) to at least 4 of the witness monuments shown on the drawing in (a), above.

THERE IS A N/S JOB AT THE NW & SW CORNERS OF SEC 30. THE ORIGINAL GOV. SURVEYOR, MILLER, SET A CLOSING CORNER (A POST) AT THE NW AND SW CORNERS OF SEC 30. THIS SHOULD CREATE A JOB AT THE W 1/4 COR SEC 30. SINCE COLLIN ESTABLISHED THE CORNER BY USING THE STUMPS OF THE WITNESS TREES HE CONSIDERED THE CORNER MULLETT SET AS THE W 1/4 COR OF SEC 30. THE ORIGINAL GOV. SURVEYORS, MILLER & MULLETT EACH SET A POST AT THE INTERSECTION OF THE TOWN LINE AND THE NEWARK SECTION LINE. ONE FOR THE CLOSING CORNER FOR NW COR OF SEC 31 NEWARK AND THE OTHER THE STANDARD CORNER FOR THE TOWNSHIP LINE. DURING MARCH OF 1833, HARRISON SURVEYED AVON TWP SOUTH OF SUGAR RIVER & IN JANUARY OF 1834, HE SURVEYED THE TWP NORTH OF SUGAR RIVER. HE ALSO HAD A SPECIAL CONTRACT TO SURVEY THE SOUTH LINE OF SEC 36 AVON TWP, WHICH HE DID IN 1834. IN THE 1834 SURVEY HE NOTES WHILE SURVEYING THE NORTH LINE OF SEC 36 HE "INT. THE EAST BOUNDARY IN MARSH 924' ". IS THE "924'" THE DISTANCE TO THE RANDOM STATE LINE? LATER THAT SPRING, MILLER SURVEYED NEWARK TWP. IN THE TOWNSHIPS TO THE NORTH, STANDARD AND CLOSING CORNERS ON THIS LINE ARE DOCUMENTED AND PERPETUATED. MILLER'S FIELD NOTES STATE HE SET POSTS & BEARING TREES WHERE HE CLOSED ON THE AVON/NEWARK TOWN LINE FROM THE STATE LINE TO THE NW CORNER OF SEC 19. SINCE COLLIN ACCEPTED BEARING TREE EVIDENCE AT THE 1/4 CORNERS ALONG THE TOWN LINE FROM THE SW COR SEC 31 TO THE NW COR SEC 19, HE MUST OF CONSIDERED THE AVON AND NEWARK CORNERS TO BE COMMON. SINCE THE ORIGINAL GOV. SURVEYORS SET STANDARD AND CLOSING

*Donald Barnes*

7-05-01

NE594

CORNERS ON THIS LINE, DID COLLIN USE THE BEARING TREES AT THE CLOSING CORNERS FOR NEWARK OR AVON TOWNSHIP? HIS MEASUREMENTS SUPPORTS THE NOTION THAT HE USED MULLETT'S CORNERS.

*(E) Was the corner reestablished through lost corner proportionate methods? If so, show the method, including the directions and distances to other public land survey corners used as evidence or used for proportioning the corner location.*

I, Donald Barnes, hereby certify that the corner location as identified by the corner code index was determined by me under my direction and control and that this U.S. Public Land Survey Monument Record is correct and complete to the best of my knowledge and belief.

seal

*Donald Barnes*

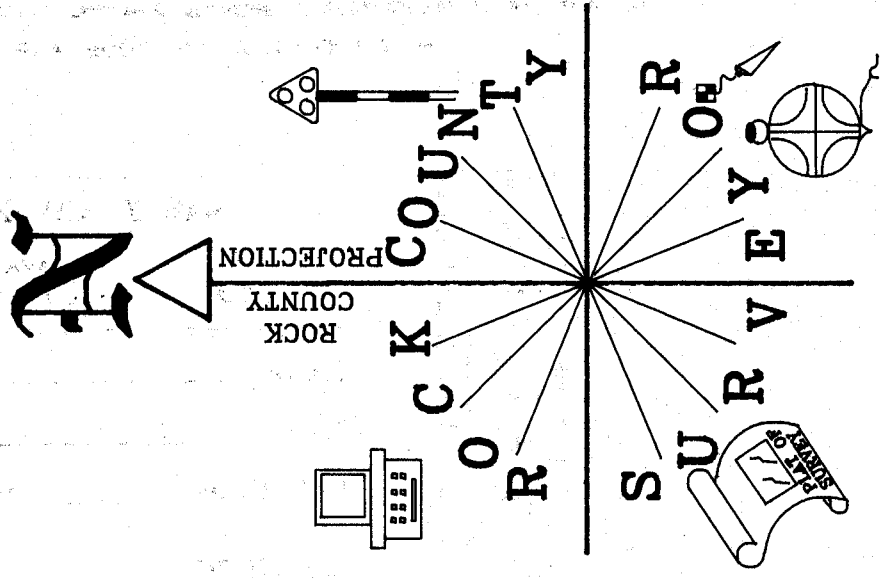
emboss

*7-05-01*

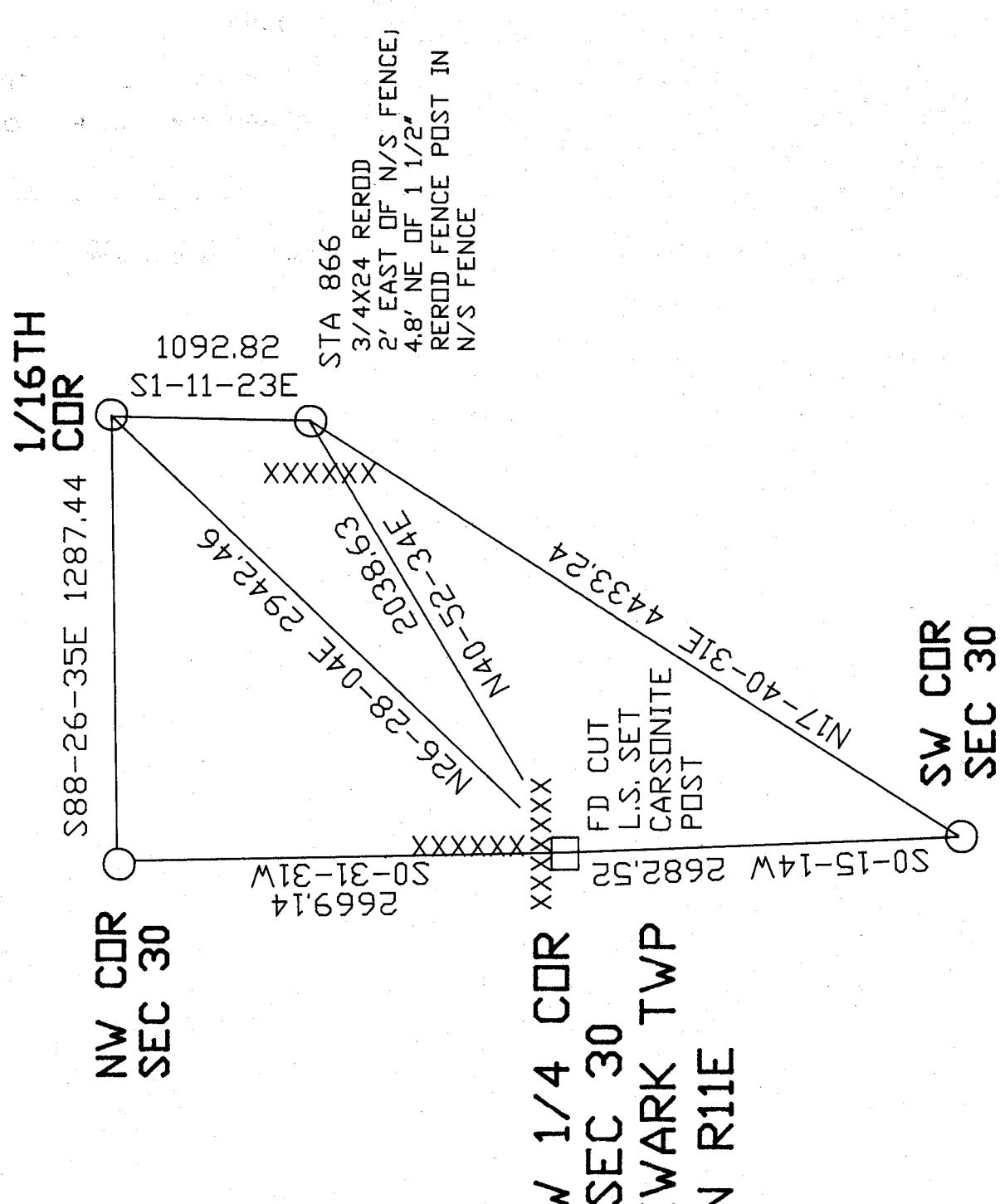
sheet 2 of 3

CORNER CODE **T-1**

**A-E 7.08 REQUIREMENT**



NOT TO SCALE  
OBSERVATION SHEET #866



*Donald Barnes*  
EMBOSSSED SEAL  
7-05-01

W 1/4 CDR  
SEC 30  
NEWARK TWP  
T1N R11E

PAGE 3 OF 3  
T-1