

U.S. PUBLIC LAND SURVEY MONUMENT RECORD

For Public Land Survey Corners in:

WI ADMINISTRATIVE CODE A-E 7.08 REQUIREMENT

T. 1 N., R. 11 E

CORNER CODE INDEX

A	1	2	3	4	5	6	7	8	9	10	11	12	13	14	15	16	17	18	19	20	21	22	23	24	25
B																									
C																									
D																									
E																									
F																									
G																									
H																									
I																									
J																									
K																									
L																									
M																									
N																									
O																									
P																									
Q																									
R																									
S																									
T																									
U																									
V																									
W																									
X																									
Y																									
Z																									

NEWARK TWP

ROCK COUNTY WI

IF AVAILABLE
ROCK COUNTY COORDINATES PREFERRED

North _____ Elev. _____

East _____

Hor. Datum _____ Vert. Datum _____

LATITUDE _____ ELLIPS. HT. _____

LONGITUDE _____

GPS (X) _____ TRAVERSE (X) _____

BASED ON THE FOLLOWING CONTROL:

PLACE MONUMENT SYMBOL AT PROPER LOCATION ON ABOVE INDEX

CORNER MONUMENT

WITNESS MONUMENT

(a)

BEARINGS ARE BASED ON:

FIELD BOOK _____ PAGE # _____

SHEET 1 OF 2

SHOW A PLAN VIEW DRAWING DEPICTING THE CORNER MONUMENT AND SURROUNDING PHYSICAL FEATURES, INCLUDING THE EXCAVATION AREA AND DEPTH.

PLANNING & ZONING COMMITTEE ADOPTED THE ABOVE FORM ON 12/2/1982

CORNER CODE R-7

NE584

(B) Describe any record evidence, monument evidence, occupational evidence, testimonial evidence or any other material evidence you considered, and whether the monument was found or placed.

1834 MILLER

EAST RANDOM BETWEEN SECS 20 & 29

5334.78 INTERSECT SEC LINE AT POST LAND SAME

WEST MARKED BACK

339.9 BUR OAK 24 IN DIA

1402.98 BUR OAK 12 IN DIA

2086.26 BUR OAK 12 IN DIA

2667.72 SET 1/4 SEC POST YELLOW OAK 24 N20W 25.74'; WHITE OAK 18 S62W 89.76'

5334.78 SEC COR

1851 MCVEAN VOL 1 PG 6 STATES NOTHING ABOUT MON. VAR 6E 2634.72 TO CENTER OF SEC 20, 5279.34 TO N 1/4 COR SEC 20, 2674.32 TO SW COR SEC 20.

1871 COLLINS REMONUMENTATION NOTES PG 189

WEST BETWEEN 20 & 29 VARIATION 9

2689.5 INTERSECT 1/4 LINE 66' SOUTH OF CORNER. SET 1/4 STONE BY STUMP OF WITNESS TREE CORRECTED VARIATION 7-33

CONTINUED WEST ON OFFSET 41.58' NORTH VARIATION 10

5377.02 INTERSECT SECTION LINE 69.3' SOUTH OF CORNER CORRECTED VARIATION 7-35

19?? ???? VOL 5 PG 73 REFERENCED MONUMENT BUT STATES NOTHING ABOUT CORNER

1973 LEE #3228 1346.37 FROM NE COR SEC 29 TO N 1/16TH COR NE 1/4 SEC 29

1985 LEE #13681 11346.37 TO N 1/16TH COR NE 1/4 SEC 29

1993 KREBS CSM 16 PG 399 1324.35 TO W 1/16TH COR OF NE 1/4 SEC 29

1996 KREBS CSM 19 PG 67 2685.58 TO SW COR SEC 20 & 2648.66 TO CENTER OF SEC 29

FOUND CUT LIMESTONE UNDER N/S FENCE. STONE IS ABOUT 0.1' ABOVE GRADE.

C) Was the corner restored through acceptance of (1) an obliterated evidence location, or, (2) a found perpetuated location?

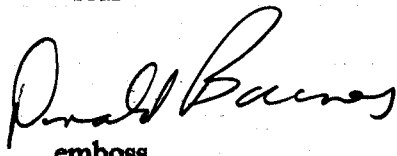
ACCEPTED FOUND LIMESTONE.

D) Describe any material discrepancy between the location of the corner as restored or reestablished and the location of that corner as previously restored or reestablished by distance and direction. Show the discrepancy on the plan view drawing under (a), above. Show the distances between the corner as previously restored or reestablished and (1) the corner as restored or reestablished, and (2) to at least 4 of the witness monuments shown on the drawing in (a), above.

(E) Was the corner reestablished through lost corner proportionate methods? If so, show the method, including the directions and distances to other public land survey corners used as evidence or used for proportioning the corner location.

I, Donald Barnes, hereby certify that the corner location as identified by the corner code index was determined by me under my direction and control and that this U.S. Public Land Survey Monument Record is correct and complete to the best of my knowledge and belief.

seal



emboss

Nov 18, 2000

Number of included sheets 1

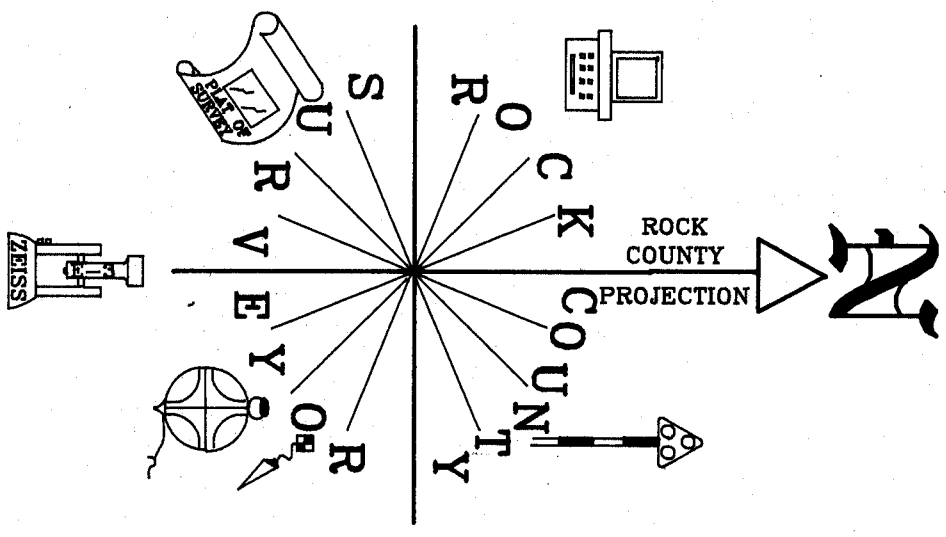
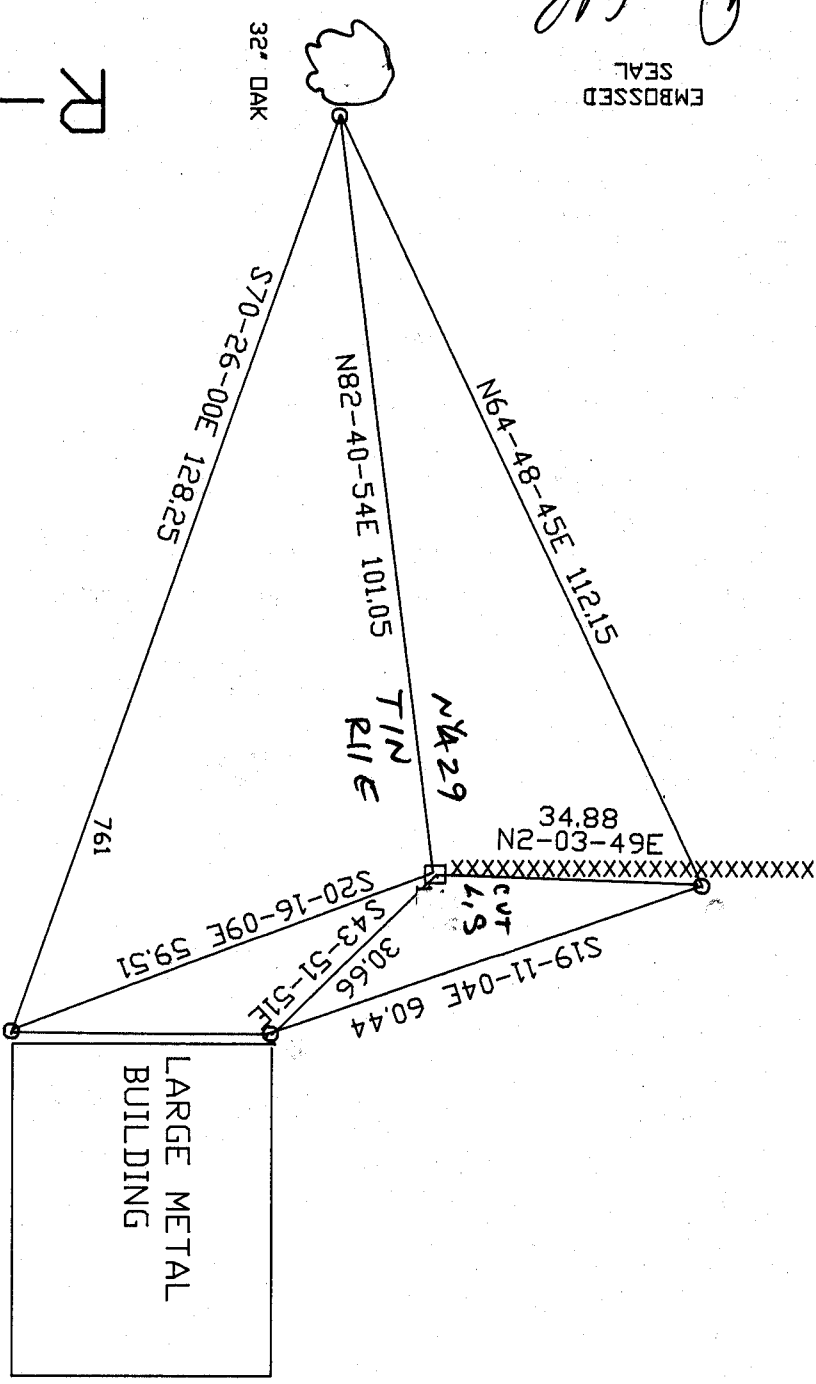
CORNER CODE R-7

A-E 7.08 REQUIREMENT

P. Williams
Nov 18 1900

EMBOSSED
SEAL

R-17



OBSERVATION SHEET #761
o 3/4x 2A PERO/cap