

U.S. PUBLIC LAND SURVEY MONUMENT RECORD

For Public Land Survey Corners in:

WI ADMINISTRATIVE CODE A-E 7.08 REQUIREMENT

T. 1 N., R. 11 E

CORNER CODE INDEX

	1	2	3	4	5	6	7	8	9	10	11	12	13	14	15	16	17	18	19	20	21	22	23	24	25
A																									
B																									
C																									
D																									
E																									
F																									
G																									
H																									
I																									
J																									
K																									
L																									
M																									
N																									
O																									
P																									
Q																									
R																									
S																									
T																									
U																									
V																									
W																									
X																									
Y																									
Z																									

NEWARK TWP

ROCK COUNTY WI

IF AVAILABLE
ROCK COUNTY COORDINATES PREFERRED

North _____ Elev. _____

East _____

Hor. Datum _____ Vert. Datum _____

LATITUDE _____ ELLIPS. HT. _____

LONGITUDE _____

GPS (X) _____ TRAVERSE (X) _____

BASED ON THE FOLLOWING CONTROL:

PLACE MONUMENT SYMBOL AT PROPER LOCATION ON ABOVE INDEX

CORNER MONUMENT

WITNESS MONUMENT

(a)

BEARINGS ARE BASED ON:

FIELD BOOK _____ PAGE # _____

SHEET 1 OF 3

SHOW A PLAN VIEW DRAWING DEPICTING THE CORNER MONUMENT AND SURROUNDING PHYSICAL FEATURES, INCLUDING THE EXCAVATION AREA AND DEPTH.

PLANNING & ZONING COMMITTEE ADOPTED THE ABOVE FORM ON 12/2/1982

CORNER CODE R9

NE585

(B) Describe any record evidence, monument evidence, occupational evidence, testimonial evidence or any other material evidence you considered, and whether the monument was found or placed.

- 1834 MILLER EAST RANDOM BETWEEN SECS 20 & 29
5334.78 INTERSECT SEC LINE AT POST LAND SAME
WEST MARKED BACK
- 339.9 BUR OAK 24 IN DIA
1402.98 BUR OAK 12 IN DIA
2086.26 BUR OAK 12 IN DIA
2667.72 SET 1/4 SEC POST YELLOW OAK 24 N20W 25.74'; WHITE OAK 18 S62W
89.76'
5334.78 SEC COR
NORTH BETWEEN SECS 20 & 21
- 462 ENTER MARSH CR E
2244 LEAVE SAME
2640 SET 1/4 SEC POST YELLOW OAK 28 N34W 30.36'; YELLOW OAK 8 S56E
83.16'
2844.6 YELLOW OAK 28 IN DIA.
4260.96 BUR OAK 15 IN DIA
5280 COR OF SECS 16,17, 20, & 21. A BUR OAK 20 IN DIAMETER LAND 2ND
RATE WITH MARSHY SPOTS THINLY TIMBERED
EAST RANDOM BETWEEN 21 & 28
- 3709.2 CREEK 6.6' C. S.E.
5285.94 SEC LINE 34.98' SOUTH POST. LAND SAME
WEST CORRECTED
- 2642.64 SET 1/4 SEC POST BUR OAK 15 N51W 36.96; BUR OAK 14 S8E 41.58'
3451.8 BUR OAK 12 IN DIA
5285.94 SEC CORNER
NORTH BETWEEN SEC 28 & 29
- 330 ENTER MARSH C E
990 LEAVE SAME
1227.6 BUR OAK 18 IN
2640 SET 1/4 SEC POST YELLOW 6 IN S2W 165'; BUR OAK 12 IN N4-30E 300.96'
4563.9 BUR OAK 14 IN DIAMETER
4940.1 YELLOW OAK 14 IN DIA
5280 SET POST COR SECS 20,21,28,29 YELLOW OAK 22 IN N87E 133.32'; BUR
OAK 22 IN S65W 232.32' LAND 2ND RATE ROLLING SOIL SANDY
TIMBER OAK & HICKORY OAK & HAZEL U.G. PRAIRIE GRASS RED
ROOT
- 1871 COLLINS. REMONUMENTATION FIELD NOTES
NORTH BETWEEN 28 & 29 VARIATION 7-15
- 2640 INTERSECT 1/4 LINE 11.22' WEST OF CORNER SET 1/4 STONE BY STUMP
OF WITNESS TREE. CORRECTED VARIATION 7-30
CONTINUED NORTH VARIATION 6-45
- 5281.32 INTERSECT SECTION LINE 8.58' WEST OF CORNER. SET STONE FOR
CORNER OF 20,21,28,29 IN PLACE OF GATE POST BY STUMP OF
WITNESS TREE. CORRECTED VARIATION 6-57
NORTH BETWEEN 20 & 21 VAR 5-30
- 2636.04 SET 1/4 STONE BY STUMPS OF WITNESS TREES
CONTINUED NORTH VARIATION 5-45
- 5270.1 INTERSECT SECTION LINE 11.22' WEST OF CORNER. SET STONE FOR
CORNER OF 16,17 20,21 IN PLACE OF STUMP OF CORNER TREE.
CORRECTED VARIATION 6-0
WEST BETWEEN 20 & 29 VARIATION 9
- 2689.5 INTERSECT 1/4 LINE 66' SOUTH OF CORNER. SET 1/4 STONE BY STUMP
OF WITNESS TREE CORRECTED VARIATION 7-33

Donald Barnes
NOV 10 2000

SHEET 1 R9

CONTINUED WEST ON OFFSET 41.58' NORTH
VARIATION 10

5377.02 INTERSECT SECTION LINE 69.3' SOUTH OF CORNER CORRECTED
VARIATION 7-35

EAST BETWEEN 21 & 28 VARIATION 4-15

2638.02 SET 1/4 STONE BY STUMPS OF WITNESS TREES

CONTINUED EAST VARIATION 5

5268.78 SECTION CORNER OCT 27, 1871

1931 SUNNY VOL 3 PG 191 SET R.R SPIKE @ CENTER OF HIGHWAY #14 & DIRT RD.
REFERENCED SAME. SHOWS 6X6 CUT STONE AT NW COR SEC 28. 585.1' NORTH
OF CENTER OF HIGHWAY #14.

1973 LEE #3228 1346.37 TO N 1/16TH COR OF NE 1/4 SEC 29

1990 KREBS #11999 1318.31 FROM W 1/4 COR SEC 28 TO W 1/16TH COR OF NW 1/4 SEC
28

1996 COMBS CSM 20 PG 225 2636.65 TO W 1/4 COR SEC 28

1998 LEUENBERGER #8199 2634.86 TO N 1/4 COR SEC 28

FOUND CUT LIMESTONE 2.4 NORTH OF E/W FENCE. FOUND CARSONITE POST
LAYING ON GROUND. PLACED CARSONITE IN FENCE. LIMESTONE IS BROKEN
LENGTH WISE.

*C) Was the corner restored through acceptance of (1) an obliterated evidence location, or, (2) a found
perpetuated location?*

ACCEPTED FOUND LIMESTONE.

*D) Describe any material discrepancy between the location of the corner as restored or reestablished and the
location of that corner as previously restored or reestablished by distance and direction. Show the discrepancy
on the plan view drawing under (a), above. Show the distances between the corner as previously restored or
reestablished and (1) the corner as restored or reestablished, and (2) to at least 4 of the witness monuments
shown on the drawing in (a), above.*

*(E) Was the corner reestablished through lost corner proportionate methods? If so, show the method, including
the directions and distances to other public land survey corners used as evidence or used for proportioning the
corner location.*

I, Donald Barnes, hereby certify that the corner location as identified by the corner code index was
determined by me under my direction and control and that this U.S. Public Land Survey Monument Record
is correct and complete to the best of my knowledge and belief.

seal

Donald Barnes

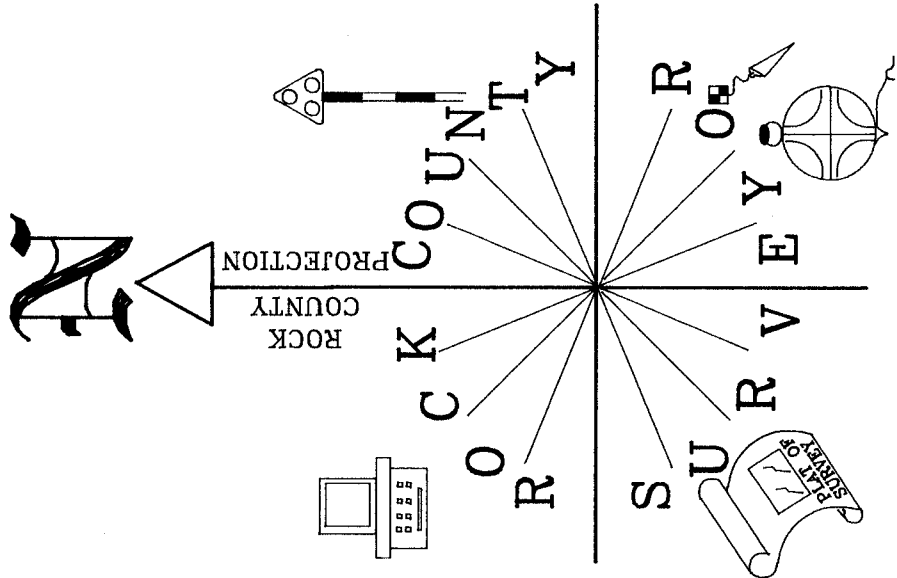
emboss

Nov 10 2000

SHEET 2 OF 3

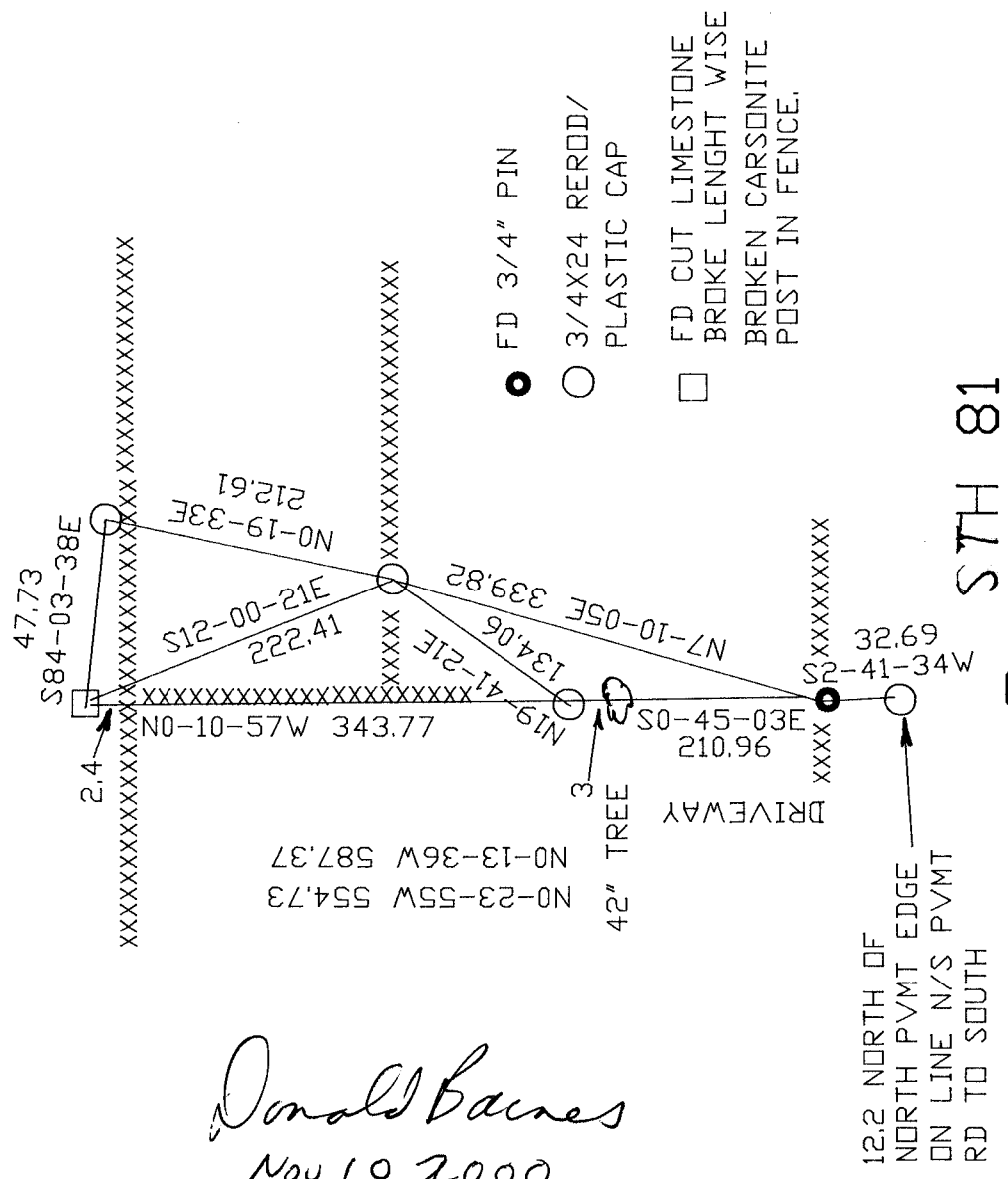
CORNER CODE **R-9**

A-E 7.08 REQUIREMENT



OBSERVATION SHEET #760

NE COR SEC 29
NEWARK TWP
T1N R11E



- FD 3/4" PIN
- 3/4X24 REROD/
PLASTIC CAP
- FD CUT LIMESTONE
BROKE LENGHT WISE
BROKEN CARSONITE
POST IN FENCE.

S7H 81

MERLET RD

12.2 NORTH OF
NORTH PVTM EDGE
ON LINE N/S PVTM
RD TO SOUTH

Donald Barnes

Nov 10 2000

EMBOSSED SEAL

R-2