

U.S. PUBLIC LAND SURVEY MONUMENT RECORD

For Public Land Survey Corners in:

WI ADMINISTRATIVE CODE A-E 7.08 REQUIREMENT

T. 1 N., R. 11 E

CORNER CODE INDEX

A	2	3	4	5	6	7	8	9	10	11	12	13	14	15	16	17	18	19	20	21	22	23	24	25
B	6																							
C		5																						
D			4																					
E				3																				
F					2																			
G						1																		
H	1																							
I		8																						
J			9																					
K				10																				
L					11																			
M						12																		
N							13																	
O								14																
P									15															
Q										16														
R											17													
S												18												
T													19											
U														20										
V															21									
W																22								
X																	23							
Y																		24						
Z																			25					

NEWARK TWP
ROCK COUNTY WI

IF AVAILABLE
ROCK COUNTY COORDINATES PREFERRED

North _____ Elev. _____

East _____

Hor. Datum _____ Vert. Datum _____

LATITUDE _____ ELLIPS. HT. _____

LONGITUDE _____

GPS (X) _____ TRAVERSE (X) _____

BASED ON THE FOLLOWING CONTROL:

PLACE MONUMENT SYMBOL AT PROPER LOCATION ON ABOVE INDEX

CORNER MONUMENT

WITNESS MONUMENT

(a)

BEARINGS ARE BASED ON:

FIELD BOOK _____ PAGE # _____

SHEET 1 OF 4

SHOW A PLAN VIEW DRAWING DEPICTING THE CORNER MONUMENT AND SURROUNDING PHYSICAL FEATURES, INCLUDING THE EXCAVATION AREA AND DEPTH.

PLANNING & ZONING COMMITTEE ADOPTED THE ABOVE FORM ON 12/2/1982

CORNER CODE R-13

NE587

(B) Describe any record evidence, monument evidence, occupational evidence, testimonial evidence or any other material evidence you considered, and whether the monument was found or placed.

- 1834 MILLER PG 26 EAST RANDOM BETWEEN 21 & 28
3709.2 CREEK 6.6' C. S.E.
5285.94 SEC LINE 34.98' SOUTH POST. LAND SAME
WEST CORRECTED
2642.64 SET 1/4 SEC POST BUR OAK 15" N51W 36.96'; BUR OAK 14" S8E 41.58'
3451.8 BUR OAK 12 IN DIA
5285.94 SEC CORNER
PG 21 NORTH BETWEEN SECS 21 & 22
782.1 BUR OAK 18 IN DIAMETER
1797.84 SPRING BROOK C S.E. 1.32' WIDE
2241.36 BUR OAK 20 IN
2640 SET 1/4 SEC. POST BUR OAK 20 IN S24E 29.7'; BUR OAK 20 IN N82W 14.52'
2772 ENTER MARSH C S.E.
3305.28 BROOK 1.32' S.W
4422 LEAVE MARSH
4923.6 BUR OAK 22 IN
5280 SET POST COR OF SEC 14,15,21,22 BUR OAK 16" S49E 31.68'; BUR OAK 20
N51W 38.94'. LAND MOSTLY 2ND RATE LEVEL
PG 21 EAST RANDOM BETWEEN SECS 22 & 27
1980 ENTER MARSHY GROUND SW
4290 LEAVE SAME
4818 BROOK 6.6' S
5276.04 INTERSECT SEC LINE 12.54' NORTH OF POST
LAND LEVEL MOSTLY LOW AND WET 2ND RATE TIMBER OAK &
HICKORY
2638.02 SET 1/4 SEC POST YELLOW OAK 6 IN N52E 134.64'; BUR OAK 5 IN N35E
168.96'
4536.84 BUR OAK 18 IN
5276.04 SEC COR.
PG 20 NORTH BETWEEN SECS 27 & 28
792 ENTER RIDGE OF TIMBER
963.6 BUR OAK 18 IN
2030.16 BUR OAK 14 IN
2310 RUN IN MARSHY GROUND
2640 SET 1/4 SEC POST. BUR OAK 12" S30E 183.48'; YELLOW OAK 6" N35W
18.48'
3078.9 BUR OAK 18
3762 CREEK BOTTOM MARSHY
3960 CREEK SE
4488 LEAVE CREEK BOTTOM
4537.5 YELLOW OAK 20
5280 SET POST CORNER OF SEC 22,23,27,28
YELLOW OAK 20" N65W 40.92'; BUR OAK 14" S82E 91.08' LAND LEVEL
2ND RATE. LOW WET & BROKEN WITH MARSHY SPOTS AND SPOTS OF
TIMBER
1871 COLLIN'S REMONUMENTATION NOTES
PG 166 NORTH BETWEEN 21 & 22 VARIATION 5
2648.58 INTERSECT 1/4 LINE 9.9' WEST OF CORNER. SET 1/4 STONE BY
STUMPS OF WITNESS TREES. CORRECTED VARIATION 5-14
CONTINUED NORTH VARIATION 5
5311.68 SET STONE FOR CORNER OF 15,16,21,22 BY WITNESS TREE AND STUMP
PG 178 EAST BETWEEN 21 & 28 VARIATION 4-15
2638.02 SET 1/4 STONE BY STUMPS OF WITNESS TREES
CONTINUED EAST VARIATION 5
5268.78 SECTION CORNER OCT 27, 1871

SHEET 1 OF 4

Donald Barnes
6-14-01

R-13

2653.2 INTERSECT 1/4 LINE 11.88' WEST OF CORNER. SET 1/4 STONE BY WITNESS TREE WITH COURSE REVERSED.
CORRECTED VARIATION 7-46

CONTINUED NORTH VARIATION 7-30

5320.26 INTERSECT SECTION LINE 40.26' WEST OF CORNER UNDER STRAW STACK SET WITNESS STAKES 33' NORTH AND 33' WEST I'LL SET STONE WHEN STRAW IS REMOVED CORRECTED VARIATION 8-22
OCT 23. 1871

PG 165

WEST BETWEEN 22 & 27 VARIATION 4-30 ON
OFFSET 11.88' SOUTH

2655.18 INTERSECT 1/4 LINE 5.94' NORTH OF CORNER. SET 1/4 STONE BY WITNESS TREE AND STUMP CORRECTED VARIATION 4-38

CONTINUED WEST VARIATION 3 ON OFFSET 13.2' NORTH

5313.66 INTERSECT SECTION LINE 24.42' NORTH OF CORNER CORRECTED VARIATION 3-15

1931 SUNNY VOL 3 PG 191 FD 6X6 CUT STONE MON. 1' UNDER GROUND IN GARDEN. 33' SOUTH OF FENCE INT.; 365.9' NORTH OF CENTER OF HWY, S46E 69.6' OF SE BUILDING COR.

1994 COMBS CSM 18 PG 331 ANGLE OF 177-45-05 @ NW COR SEC 27 FROM W 1/4 COR SEC 22 TO W 1/4 COR SEC 27, 2681.60 TO W 1/4 COR SEC 27, & 2650.76 TO W 1/4 COR SEC 22

C) Was the corner restored through acceptance of (1) an obliterated evidence location, or, (2) a found perpetuated location?

DUG & FOUND CUT LIMESTONE 0.4' DEEP. SET MAGNETS ON SOUTH & WEST SIDE. THE E/W FENCE LINE JUST NORTH OF THE CORNER, APPEARS TO HAVE BEEN ESTABLISHED YEARS AGO FROM COLLIN'S TEMPORARY NORTH WITNESS STAKE.

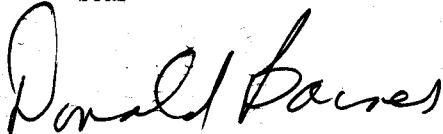
D) Describe any material discrepancy between the location of the corner as restored or reestablished and the location of that corner as previously restored or reestablished by distance and direction. Show the discrepancy on the plan view drawing under (a), above. Show the distances between the corner as previously restored or reestablished and (1) the corner as restored or reestablished, and (2) to at least 4 of the witness monuments shown on the drawing in (a), above.

FOUND 1/2 REROD THAT COMBS PROBABLY USED IN 1994. CSM LEGENDS CALLS FOR LIMESTONE BUT DISTANCES AND ANGLE TO FOUND REROD IS IN HARMONY WITH HIS SURVEY. HE DID NOT FILE A U.S. PUBLIC LAND SURVEY MONUMENT RECORD. THE REROD WAS PROBABLY SET BY HIM.

(E) Was the corner reestablished through lost corner proportionate methods? If so, show the method, including the directions and distances to other public land survey corners used as evidence or used for proportioning the corner location.

I, Donald Barnes, hereby certify that the corner location as identified by the corner code index was determined by me under my direction and control and that this U.S. Public Land Survey Monument Record is correct and complete to the best of my knowledge and belief.

seal

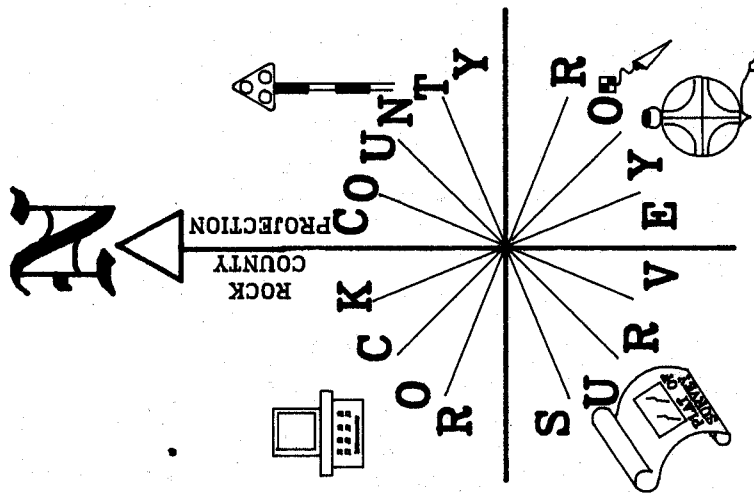


emboss 6.14-01

SHEET 2 OF 4

CORNER CODE R-13

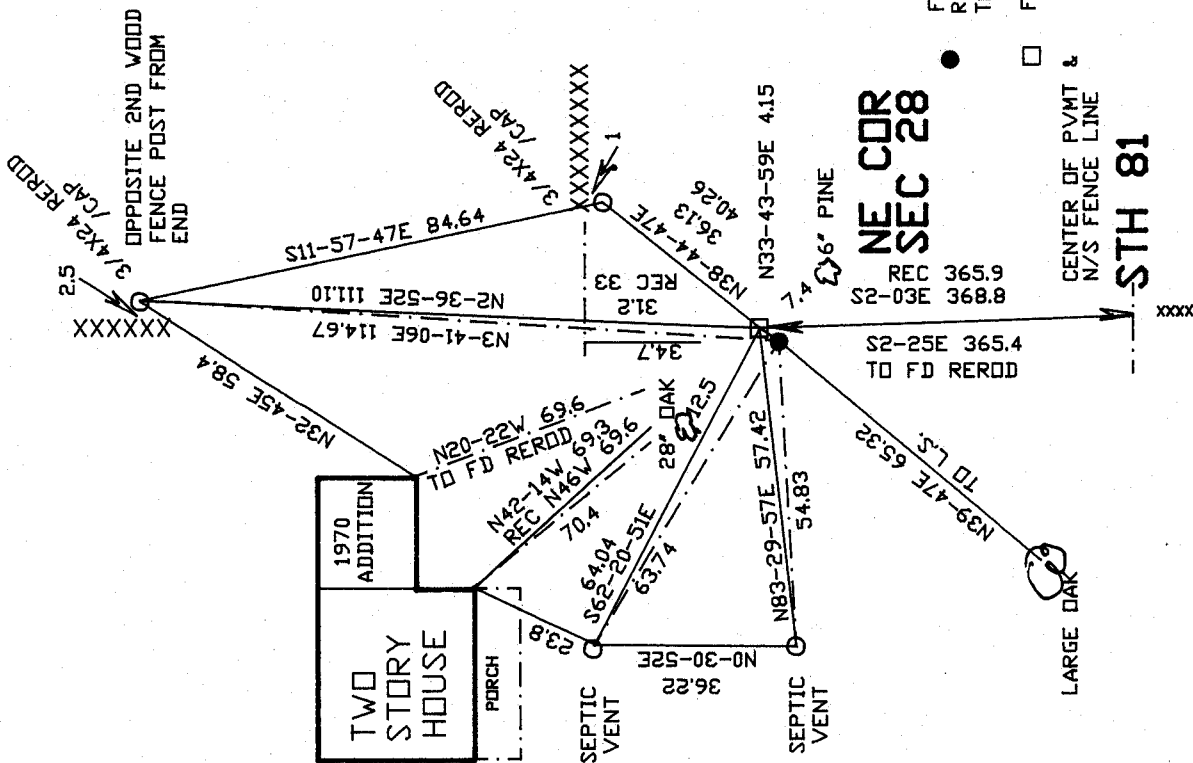
A-E 7.08 REQUIREMENT



FD 1/2" REROD
REMOVED IN ATTEMPT
TO PLACE ALUM. MON.

FD CUT L.S.

OBSERVATION SHEET
#587 & 1587



3 OF 4

R-13

EMBOSSED
SEAL

Donald Barnes
6-14-01

**EMBRISSED
SEAL**
Donald Barnes
6-14-01

1/4 COR

SFC

N1-02-28E 2647.00 (L.S.)
N1-05-22E 2650.48 (REROD)

S88-08-14E 2630.27 (L.S.)
S88-03-39E 2628.09 (REROD)
1872 COLLIN #6813 2630.76
1871 COLLIN VAR 5 2630.76
1834 MILLER 2642.64

N 1/4 COR

FOUND CUT
LIMESTONE

FOUND CUT
LIMESTONE
& REROD

SFC

N1-06-46W 2685.42 (L.S.)
N1-09-47W 2682.03 (REROD)

FOUND CUT
LIMESTONE

1/4 COR

FOUND CUT
LIMESTONE

1994 COMBS CSM 18 PG 331 2650.76
1872 COLLIN #6813 2648.58
1871 COLLIN VAR 5-14 2648.58
1834 MILLER 2640
177-50-46 (L.S.)
177-44-50 (REROD)
1994 COMBS CSM 18 PG 331

1834 MILLER 2638.02
1871 COLLIN VAR 3-15 2658.48
1872 COLLIN #6813 VAR 4-38 2655.18
S87-11-27E 2655.41 (REROD)
S87-06-51E 2653.29 (L.S.)

FOUND CUT
LIMESTONE

N 1/4 COR

SFC

ROCK
COUNTY
PROJECTION

**NEWARK TWP
T1N R11E**

SHEET 4 OF 4

R-13