

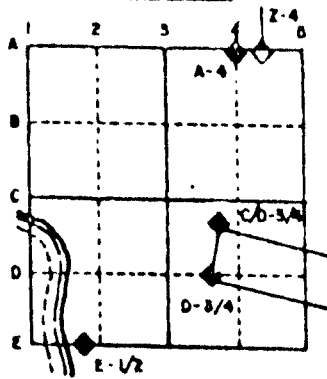
# U. S. PUBLIC LAND SURVEY MONUMENT RECORD

For Public Land Survey Corners in the  
 T. 1 N., R. 11 E.  
 CORNER CODE INDEX

1	2	3	4	5	6	7	8	9	10	11	12	13	14	15	16	17	18	19	20	21	22	23	24	25
A																								
B																								
C	6	5	4	3	2	1																		
D																								
E																								
F																								
G																								
H	7	8	9	10	11	12																		
I																								
J																								
K																								
L	18	17	16	15	14	13																		
M																								
N																								
O																								
P	19	20	21	22	23	24																		
Q																								
R																								
S																								
T	30	29	28	27	26	25																		
U																								
V																								
W																								
X																								
Y																								
Z																								

PLACE MONUMENT SYMBOL (◆) AT PROPER  
LOCATION ON ABOVE INDEX

## EXAMPLE



NEWARK TWP  
ROCK COUNTY WI

IF AVAILABLE  
STATE PLANE COORDINATES

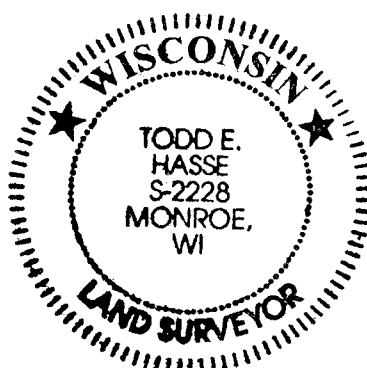
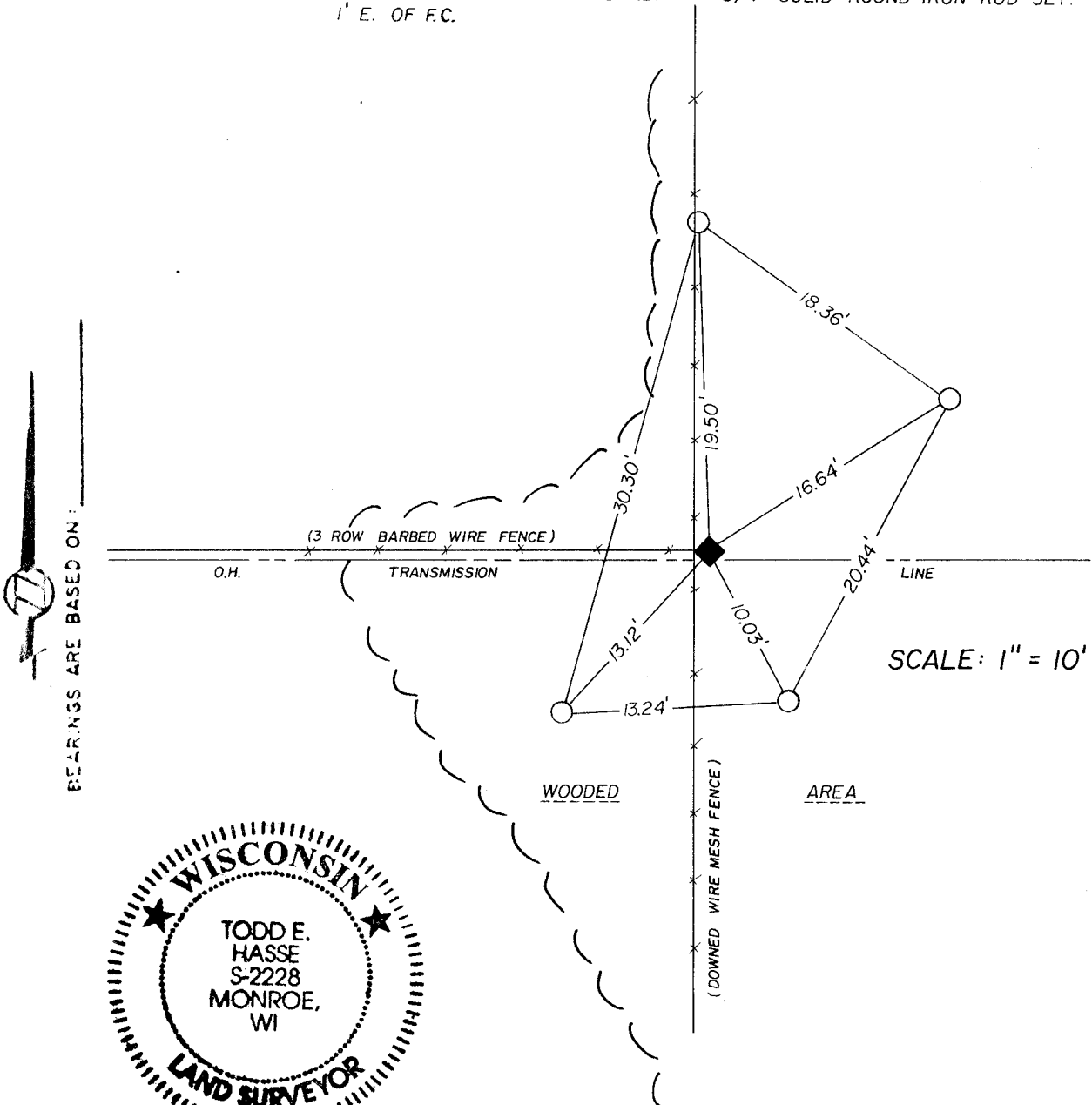
North (Y) \_\_\_\_\_ Eleve. (Z) \_\_\_\_\_  
 East (X) \_\_\_\_\_ Zone \_\_\_\_\_  
 Hor. Datum \_\_\_\_\_ Vert. Datum \_\_\_\_\_

**◆ CORNER MONUMENT**

3" X 6" CUT LIMESTONE FOUND  
1' E. OF F.C.

**○ WITNESS MONUMENT**

3/4" SOLID ROUND IRON ROD SET.



*Todd E. Hasse*

6/25/96

SHEET 1 OF 1

CORNER CODE: P-001

(B) Describe any record evidence, monument evidence, occupational evidence, testimonial evidence or any other material evidence you considered, and whether the monument was found or placed.

I found and accepted a 3" X 6" cut limestone monument located 1' E of a N/S/W fence corner. This corner had been previously shown on a section summary sheet dated October 18, 1974 by Hugh J. Lee.

C) Was the corner restored through acceptance of (1) an obliterated evidence location, or, (2) a found perpetuated location?

A found perpetuated location.

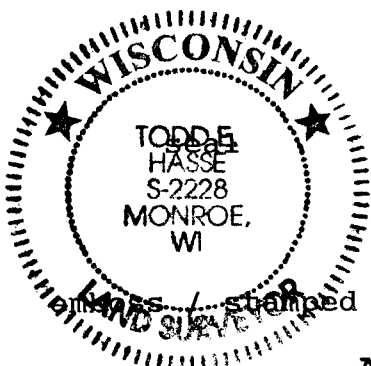
D) Describe any material discrepancy between the location of the corner as restored or reestablished and the location of that corner as previously restored or reestablished by distance and direction. Show the discrepancy on the plan view drawing under (a), above. Show the distances between the corner as previously restored or reestablished and (1) the corner as restored or reestablished, and (2) to at least 4 of the witness monuments shown on the drawing in (a), above.

None

(E) Was the corner reestablished through lost corner proportionate methods? If so, show the method, including the directions and distances to other public land survey corners used as evidence or used for proportioning the corner location.

No

I, Todd E. Hasse, hereby certify that the corner location as identified by the corner code index was determined by me under by direction and control and that this U.S. Public Land Survey Monument Record is correct and complete to the best of my knowledge and belief.



Number of included sheets \_\_\_\_\_

CORNER CODE

A-E 7.08 REQUIREMENT

*Todd E. Hasse*

P-001