

# U.S. PUBLIC LAND SURVEY MONUMENT RECORD

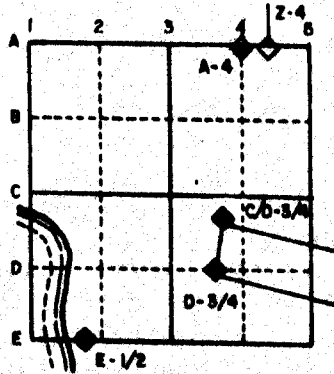
For Public Land Survey Corners in the  
T. 1 N., R. 11 E.

## CORNER CODE INDEX

	1	2	3	4	5	6	7	8	9	10	11	12	13	14	15	16	17	18	19	20	21	22	23	24	25
A																									
B																									
C	6																								
D		5																							
E			4																						
F				3																					
G					2																				
H																									
I																									
J	7																								
K		8																							
L			9																						
M				10																					
N					11																				
O						12																			
P							13																		
Q								14																	
R									15																
S										16															
T											17														
U												18													
V													19												
W														20											
X															21										
Y																22									
Z																	23								
																		24							
																			25						
																				26					
																					27				
																						28			
																							29		
																								30	
																									31
																									32
																									33
																									34
																									35
																									36

PLACE MONUMENT SYMBOL (◆) AT PROPER LOCATION ON ABOVE INDEX

### EXAMPLE



NEWARK TWP  
ROCK COUNTY WI

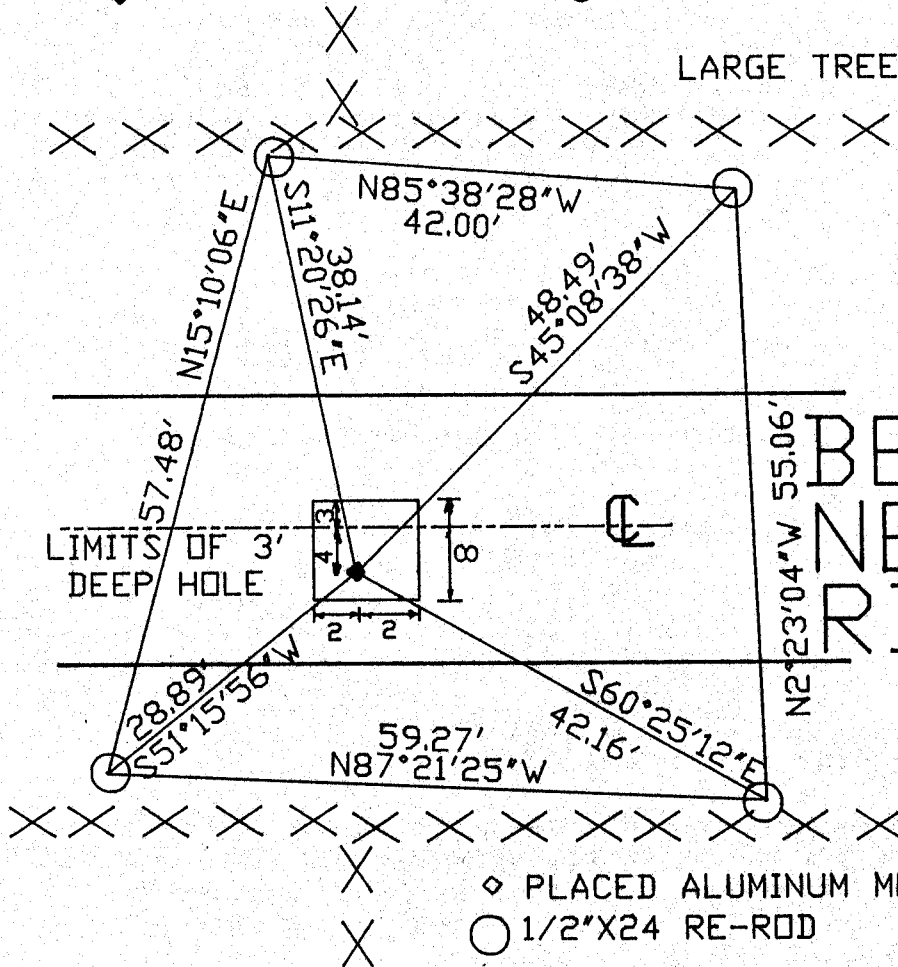
IF AVAILABLE  
STATE PLANE COORDINATES

North (Y) \_\_\_\_\_ Elev. (Z) \_\_\_\_\_  
 East (X) \_\_\_\_\_ Zone \_\_\_\_\_  
 Hor. Datum \_\_\_\_\_ Vert. Datum \_\_\_\_\_

(a)

◆ CORNER MONUMENT

○ WITNESS MONUMENT



BEARINGS ARE BASED ON: 1927 DATUM  
STATE PLANE

FIELD BOOK 1 PAGE # 56, 67

**MICROFILMED**

SHOW A PLAN VIEW DRAWING DEPICTING THE CORNER MONUMENT AND SURROUNDING PHYSICAL FEATURES, INCLUDING THE EXCAVATION AREA AND DEPTH. THE CORNER MONUMENT SHALL HAVE THE FOLLOWING CHARACTERISTICS: 1) HAVE AT LEAST TWO PREDETERMINED BREAK-OFF POINTS. 2) IF BROKEN, LEAVE A PERMANENTLY MAGNETIZED REMNANT AT THE ORIGINAL POINT. 3) MUST BE EXTENDABLE. 4) THE CAP IS INSCRIBED: ROCK COUNTY SURVEY MONUMENT - PENALTY FOR DISTURBING MARKER. 5) OR AN EXISTING CUT LIMESTONE. AN IRON PIPE 1 1/2" x 4'0" (MINIMUM) MAY BE USED IN AREAS WHERE GROUND WATER IS WITHIN ONE FOOT OF THE SURFACE. IF THE CORNER IS OCCUPIED BY AN IMPROVEMENT (MANHOLE, BURIED CABLE, ETC.) ANY DURABLE, DISTINCT MONUMENT MAY BE USED. CORNERS SHALL BE REFERENCED WITH AT LEAST 4 DURABLE WITNESS MONUMENTS. WITNESS MONUMENTS SHALL BE MADE OF CONCRETE, NATURAL STONE, IRON OR OTHER EQUALLY DURABLE MATERIAL, EXCEPT WOOD. DESCRIBE THE CORNER AND THE WITNESS MONUMENTS.

CORNER CODE: N 7

(B) Describe any record evidence, monument evidence, occupational evidence, testimonial evidence or any other material evidence you considered, and whether the monument was found or placed.

1851 Mc VEAN VOL 1 PG 6 USED CORNER TO SUBDIVIDE SECTION 20. STATES NOTHING ABOUT CORNER. SHOWS A DISTANCE OF 2644.62 TO THE CENTER OF SECTION 20.

1871 COLLINS. FIELD NOTES STATES "SET 1/4 STONE. FOUND TRACES OF ROOTS OF WITNESS TREES." HE CALLS FOR A DISTANCE OF 2651.88 TO THE SOUTH WEST CORNER OF SECTION 17 AND 2653.86 TO THE SOUTH EAST CORNER OF SECTION 17.

1958 SHIMEALL PLAT OF SURVEY CALLS FOR AN ANGLE OF 88-50 AT THE SOUTHWEST CORNER FROM THE WEST QUARTER CORNER TO THE SOUTH QUARTER CORNER OF SECTION 17. HAROLD COMBS STATED THAT HIS FIELD NOTES CALLED FOR NOTHING AT THE SOUTH QUARTER CORNER OF SECTION 17. FOR LINE HE USED A MID POINT OF THE EAST/WEST FENCES ON THE NORTH AND SOUTH SIDE OF THE ROAD AT THAT LOCATION.

AN ELDERLY MAN STATED THAT A LONG TIME AGO THE HIGHWAY DEPARTMENT REMOVED THE STONE WHILE WORKING ON ROAD. HE SAID THAT THEY THREW THE STONE IN THE SOUTH DITCH. HE SAID THAT THE STONE WAS ABOUT 4' SOUTH OF THE CENTER OF THE PAVEMENT AND ON LINE WITH THE FENCES TO THE NORTH AND SOUTH.

I DUG A HOLE 3' DEEP AND FOUND NOTHING. THERE WAS NO BLACK DIRT IN THE HOLE. THE TERRAIN ON BOTH SIDES OF THE ROAD INDICATES THAT THE ROAD WAS CUT AND THE STONE WAS PROBABLY REMOVED AS THE WITNESS CLAIMED. FOR THE EAST/WEST LOCATION, I USED COLLINS DISTANCES TO THE SW CORNER OF SECTION 17 AND THE SOUTH QUARTER CORNER OF SECTION 16 FOR PRORATION. I USED THE WITNESS'S STATEMENT AND KEPT THE CORNER ABOUT 4' SOUTH OF THE CENTER OF THE PAVEMENT. THIS IS IN HARMONY WITH McVEANS DISTANCE TO THE EAST/WEST QUARTER LINE OF SECTION 20. I PLACED AN ALUMINUM MONUMENT.

C) Was the corner restored through acceptance of (1) an obliterated evidence location, or, (2) a found perpetuated location?

I RESTORED THE CORNER THROUGH ACCEPTANCE OF OBLITERATED EVIDENCE LOCATION.

D) Describe any material discrepancy between the location of the corner as restored or reestablished and the location of that corner as previously restored or reestablished by distance and direction. Show the discrepancy on the plan view drawing under (a), above. Show the distances between the corner as previously restored or reestablished and (1) the corner as restored or reestablished, and (2) to at least 4 of the witness monuments shown on the drawing in (a), above.

(E) Was the corner reestablished through lost corner proportionate methods? If so, show the method, including the directions and distances to other public land survey corners used as evidence or used for proportioning the corner location.

I, Donald Barnes, hereby certify that the corner points as identified by the corner code index were, in a field survey on, Sep 12 1989, established, re-established, monumented, re-monumented, recovered or restored as expressed below and in conformance with the regulations and rules as required in the current manual of survey instructions of the United States Department of Interior, Bureau of Land Management.

COUNTY SURVEYOR FILING DATA

seal

Date of computer entry \_\_\_\_\_